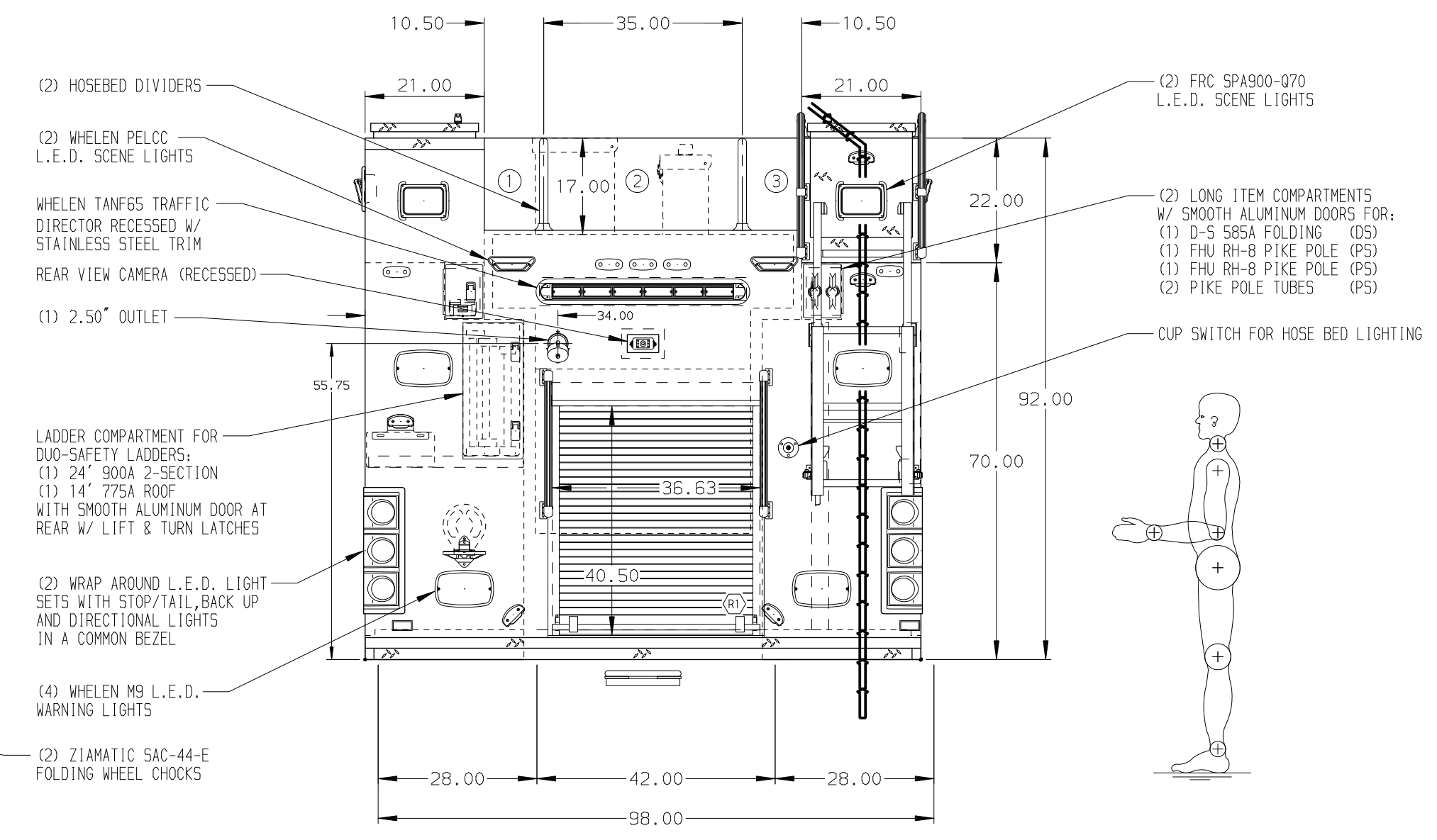
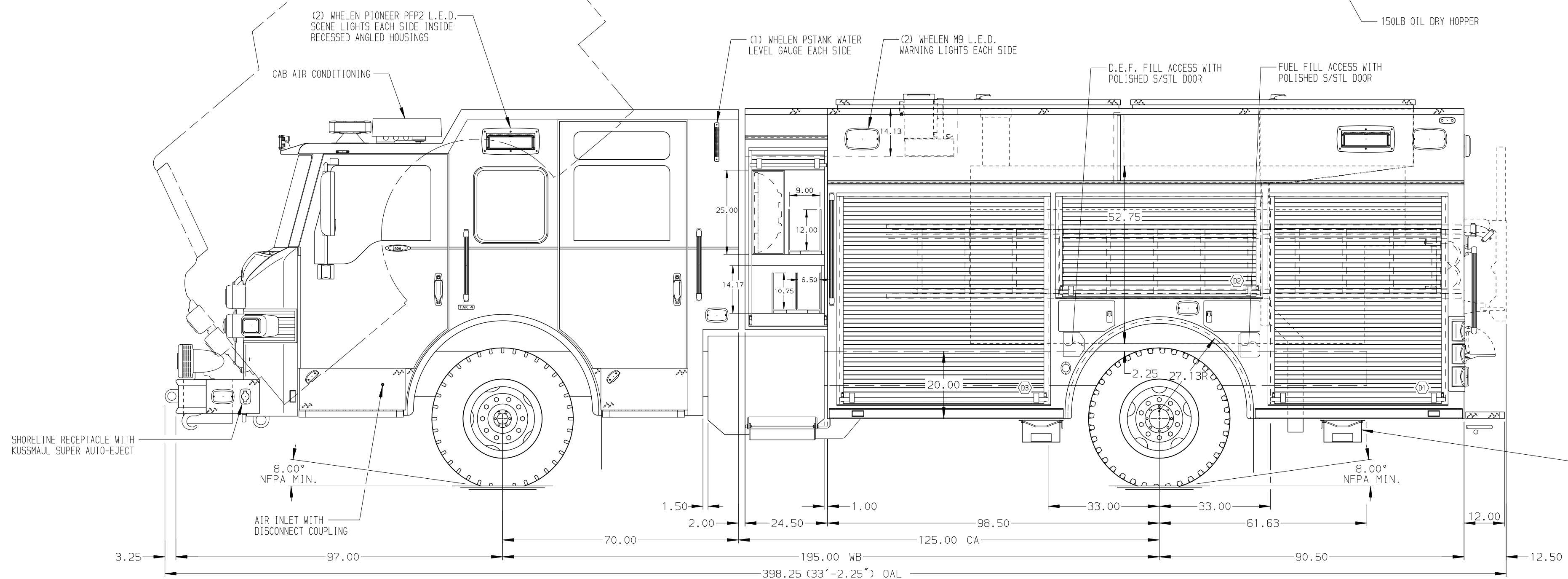


HOSEBED CAPACITIES

① - 300' OF 2.50" D.J. HOSE

② - 900' OF 5.00" D.J. HOSE

③ - 300' OF 2.50" D.J. HOSE



ALUMINUM BODY

NOTE
DIMENSIONS SHOWN ARE APPROXIMATE AND ARE SUBJECT TO MINOR DEVIATIONS AS MAY OCCUR OR BE NECESSARY IN CONSTRUCTION.
MINOR DETAILS NOT SHOWN.

- BATTERY CHARGER LOCATED HIGH ON LEFT WALL IN COMPARTMENT D3
- BATTERY CHARGE INDICATOR LOCATED NEAR DRIVER'S SEAT RISER WITH BRACKET
- TWO AMOR LUMBAR H20 STRIP LIGHTS LOCATED IN CARGO AREAS
- FULL WIDTH/DEPTH ADJUSTABLE SHELVES LOCATED (TBD)
- ONE ADJUSTABLE TILT/SIDE-OUT FULL WIDTH/DEPTH TRAY IN COMPARTMENT (TBD)
- ONE FLOOR MOUNTED SLIDE-OUT TRAY WITH 2.00" SIDES IN COMPARTMENTS D1, D3, P1, & P3
- ONE SWING-OUT ALUMINUM TOOL BOARD IN COMPARTMENT D2
- TWO ADJUSTABLE SLIDE-OUT ALUMINUM TOOL BOARDS IN COMPARTMENT P1
- TWO 24" L x 10" W x 24" D POLY TOOL BOX LOCATED IN COMPARTMENT (TBD)
- THREE 24" L x 10" W x 10" D POLY TOOL BOX LOCATED IN COMPARTMENT (TBD)
- TWO PAC TRACS INSTALLED IN COMPARTMENT(S) (TBD)
- TWO VERTICAL REBOARD PARTITION IN COMPARTMENT(S) (TBD)
- FOUR AIR BAG RACKS (SIZE TBD) INSTALLED IN COMPARTMENT(S) (TBD)
- ONE SET OF HORIZONTAL EQUIPMENT MOUNTING TRACKS IN COMPARTMENT (D2)

CUSTOMER APPROVAL			
APPROVED BY:		CHASSIS DATA	TITLE
DATE:		MAKE	FOR
		PIERCE	DWG NO.
REV	DATE	BY	CH
		IMPEL	



1500-D-1000P, 980G WATER, 20G FOAM, 189" PUC
(3) CROSSLAYS, DELUGE, HUSKY 3, LADDERS THRU DS BODY
RUSSELL FIRE DEPARTMENT
RUSSELL, KENTUCKY

JOB NO.	32262
SCALE	1:24
DATE	
DRAWN BY	GVH
CHECKED BY	CDU
SHEET NO.	1 OF 1

32262AD