

**PUMPER BODY**

Medium Aluminum 2nd Gen Pumper

**CHASSIS**

Enforcer Chassis

**CHASSIS AXLE, FRONT, CUSTOM**

18,000 Lb Dana Axle

**AXLE, REAR**

24,000 Lb Dana Axle

**ENGINE**

450 HP Cummins L9 Engine

**TRANSMISSION**

Allison 5th Gen, 3000 EVS P

**BUMPER**

Non Extended Stainless Steel

**CAB**

7010 Enforcer Cab

**BODY WATER TANK**

720 Gallon Poly Water Tank

**COMPT, PUMPER, REAR**

44.50" FF RollUp Rear Compt

**COMPT, PUMPER, DRIVER SIDE**

152" RollUp Full Height Front & Rear FDLR

**COMPT, PUMPER PASS. SIDE**

152" RollUp Full Height Front & Rear FDLR

**FIRE SUPPRESSION PUMPHOUSE**

45" Control Zone Top Mount

**PUMP**

1500 GPM Waterous CSU

**CROSSLAYS, 1.50"**

(2) 1.50" Standard Capacity

**CROSSLAYS, 2.50"**

(1) 2.50" Standard Capacity

**SPEEDLAYS**

(2) 1.50" W/Tray Std. Capacity

**GENERATOR**

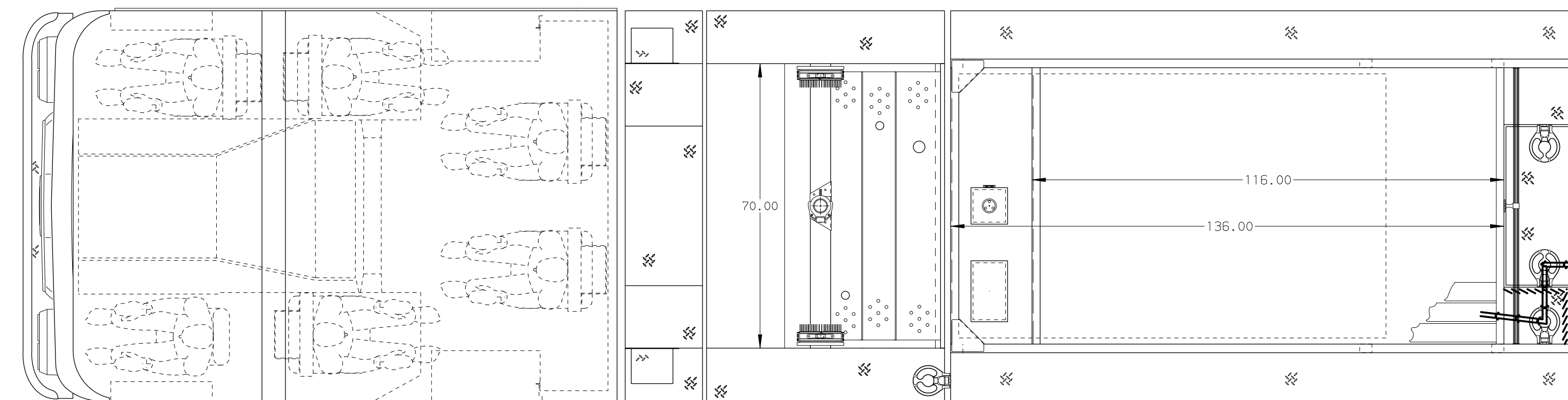
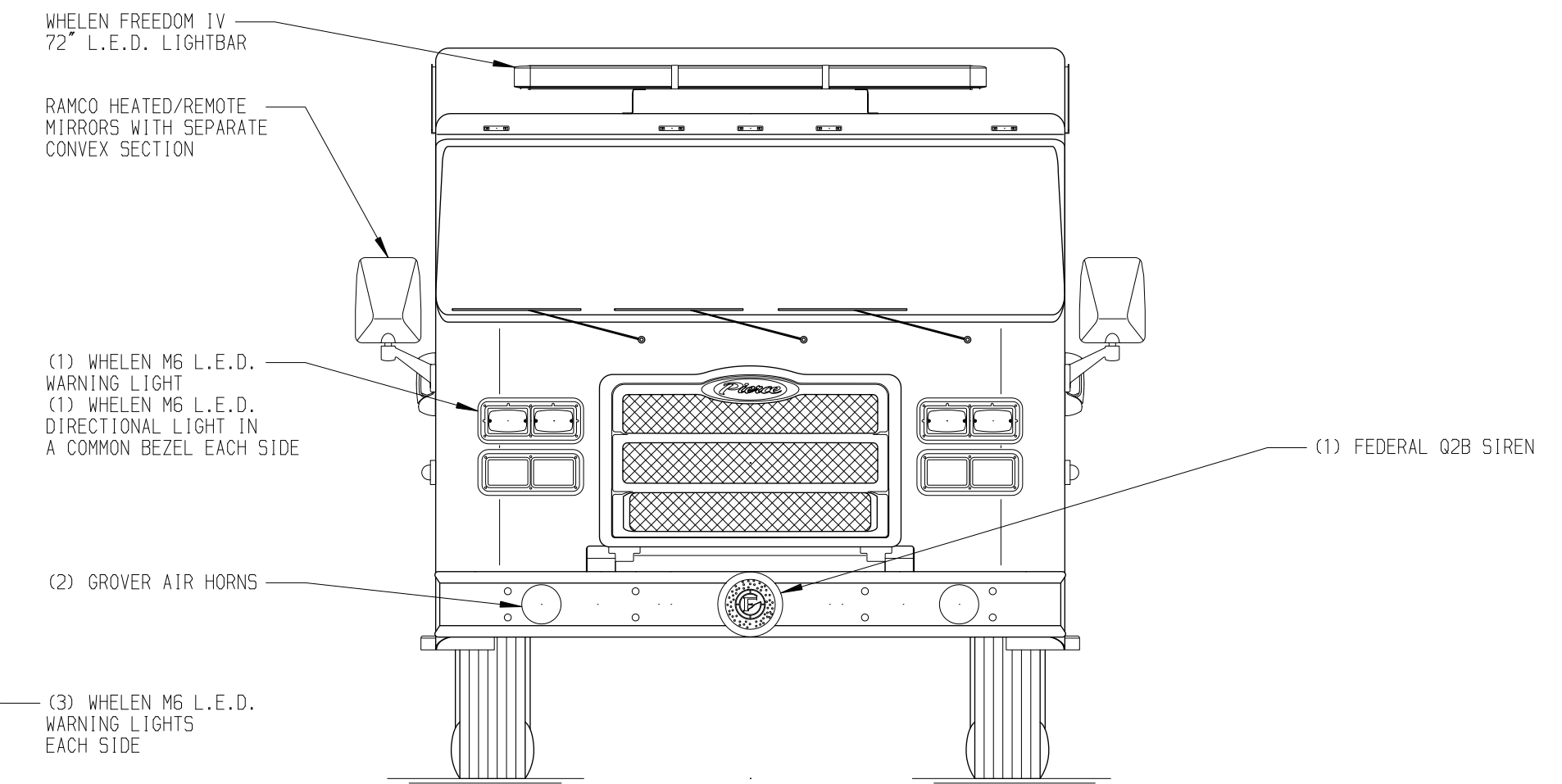
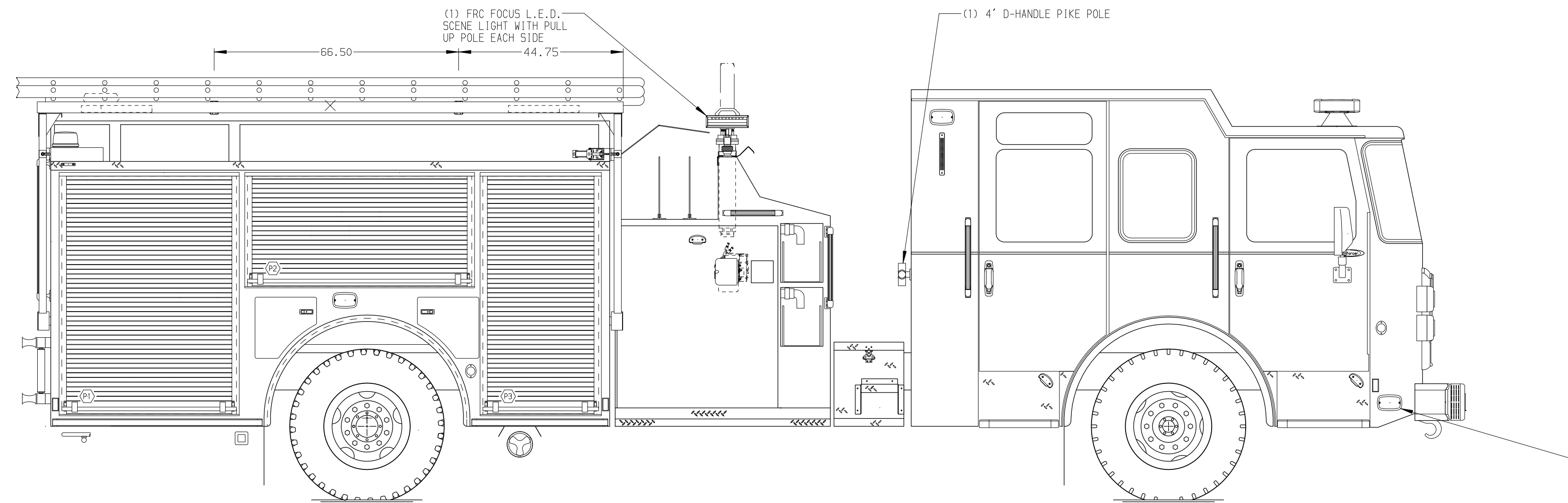
Generator Not Required

**Foam System**

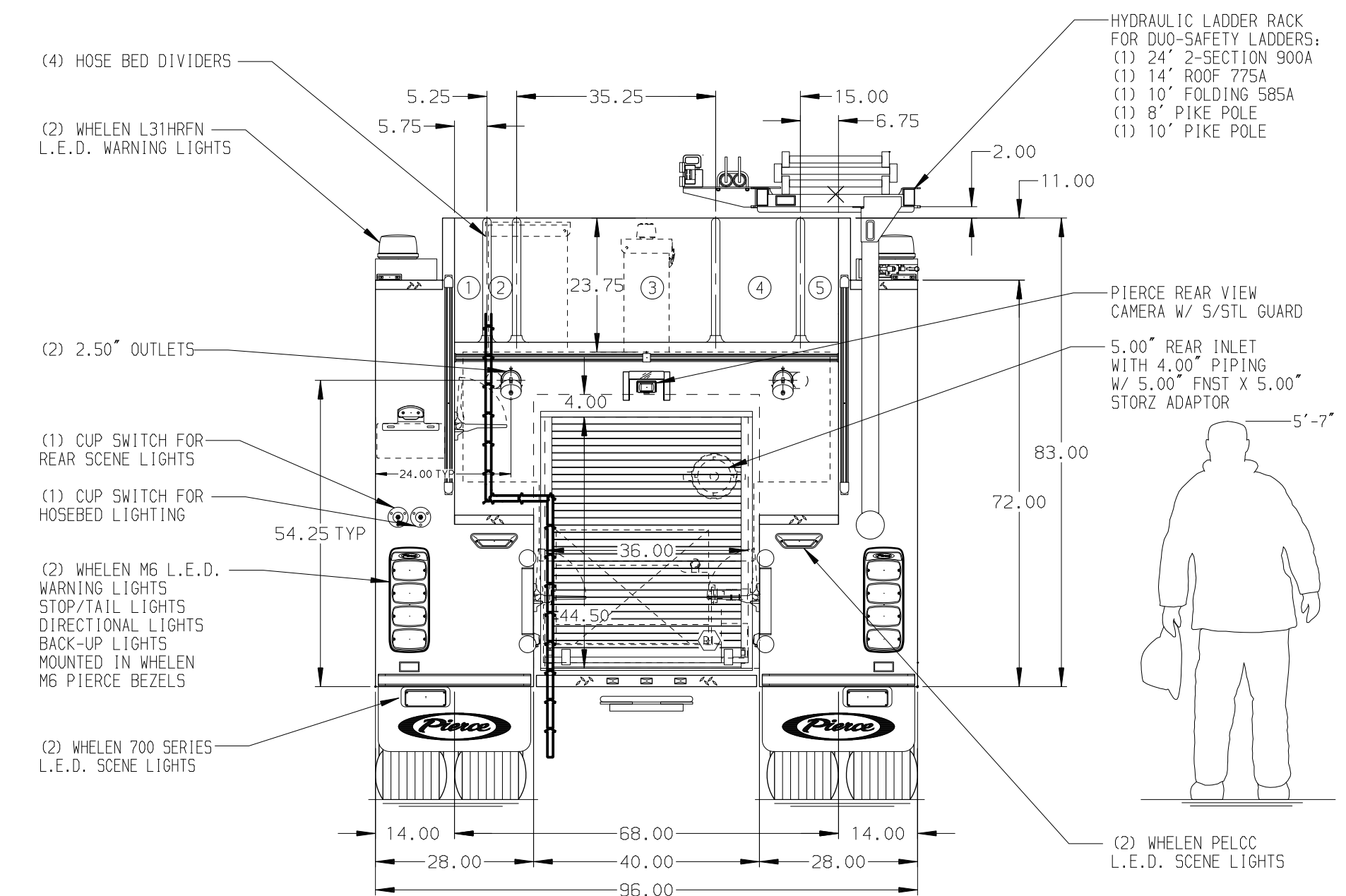
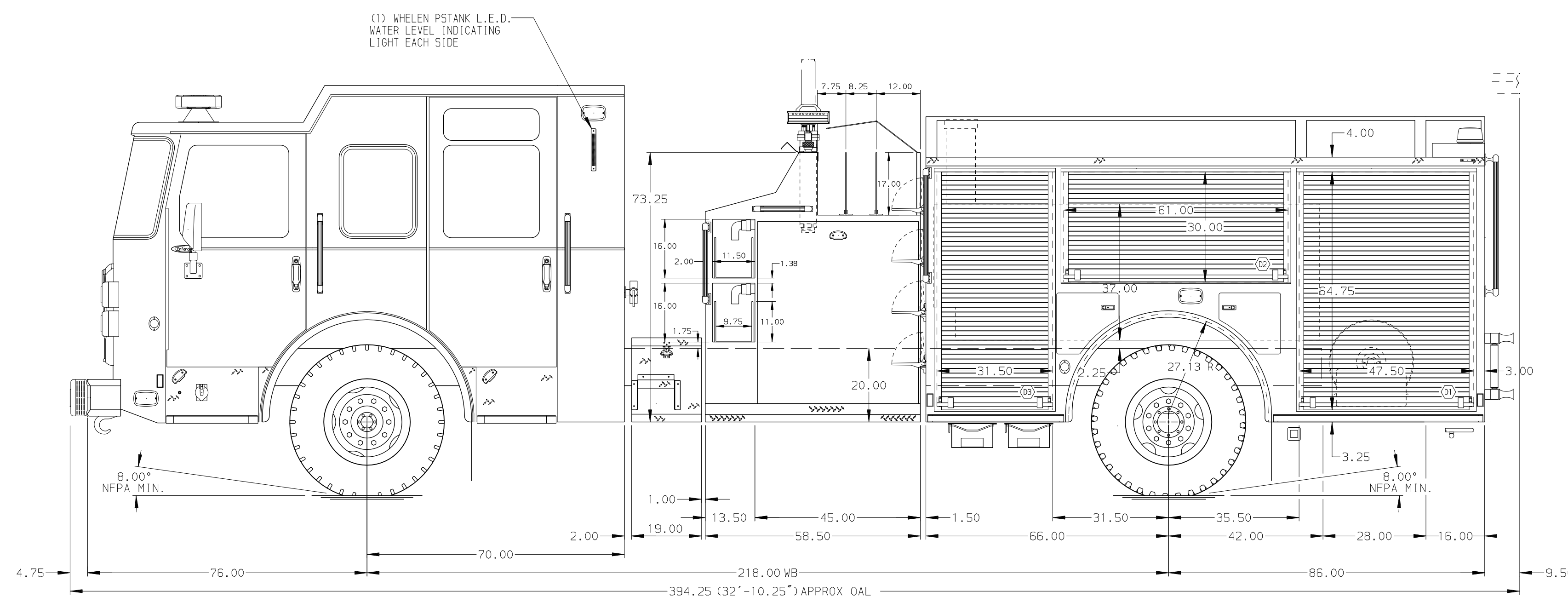
External Foam System

**Foam Cell**

30 Gallon Foam Cell, Reduced Water



HOSEBED CAPACITY	
<b>BED 1</b>	200' OF 2.50" D.J. POLY HOSE
<b>BED 2</b>	200' OF 1.75" D.J. POLY HOSE
<b>BED 3</b>	800' OF 5.00" D.J. POLY HOSE
<b>BED 4</b>	600' OF 2.50" D.J. POLY HOSE
<b>BED 4</b>	250' OF 3.00" D.J. POLY HOSE



**NOTE**  
DIMENSIONS SHOWN ARE APPROXIMATE AND ARE SUBJECT TO MINOR DEVIATIONS AS MAY OCCUR OR BE NECESSARY IN CONSTRUCTION. MINOR DETAILS NOT SHOWN.

- 1. SHORELINE RECEPTACLE LOCATED IN DRIVERS STEP AREA
- 2. AIR INLET WITH DISCONNECT COUPLING IN THE DRIVER SIDE STEPMWELL
- 3. BATTERY CHARGER LOCATED IN COMPARTMENT PER SHOP ORDER
- 4. BATTERY CHARGE INDICATOR LOCATED ON THE DRIVER SIDE SEAT RISER
- 5. TEN ADJUSTABLE SHELVES IN COMPARTMENTS PER SHOP ORDER
- 6. TWO FLOOR MOUNTED SLIDE-OUT TRAYS IN COMPARTMENTS PER SHOP ORDER
- 7. ONE SWING-OUT TOOLBOARD IN COMPARTMENT PER SHOP ORDER
- 8. ALUMINUM PEGBOARD IN COMPARTMENT PER SHOP ORDER
- 9. PARTITION BETWEEN COMPARTMENTS D1/R1 AND P1/R1
- 10. ALUMINUM PEGBOARD ON FLOOR OF TRAY IN COMPARTMENT PER SHOP ORDER
- 11. HANNAY BOOSTER REEL MODEL EF34-23-24 WITH CAPACITY FOR 150' OF 1.00" BOOSTER HOSE LOCATED IN COMPARTMENT R1
- 12. AUTOMATIC TIRE CHAINS
- 13. XANTREX PROSINE INVERTER IN COMPARTMENT PER SHOP ORDER
- 14. CIRCUIT BREAKER PANEL IN COMPARTMENT PER SHOP ORDER
- 15. TWO 120V DUPLEX RECEPTACLES IN COMPARTMENTS PER SHOP ORDER

REV	DATE	BY	CH	ENFORCER
16APR18	COL	KBO		
13APR18	COL	KBO		

		JOB NO.	32266
		SCALE	DATE
TITLE	Pierce Pumper Approval Drawing		
FOR	Walla Walla Fire Department		
DWG NO.	32266AD		
CHECKED BY	KBO	DRAWN BY	COL
SHEET SIZE	D	CHECKED BY	KBO
SHEET NO.	1 OF 1	DRAWN BY	COL
		CHECKED BY	KBO
		DRAWN BY	COL