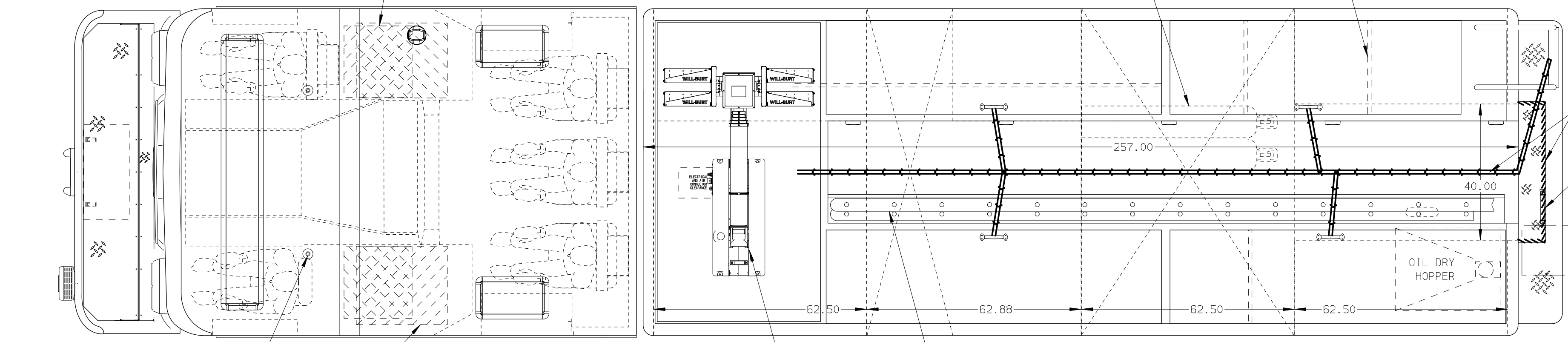
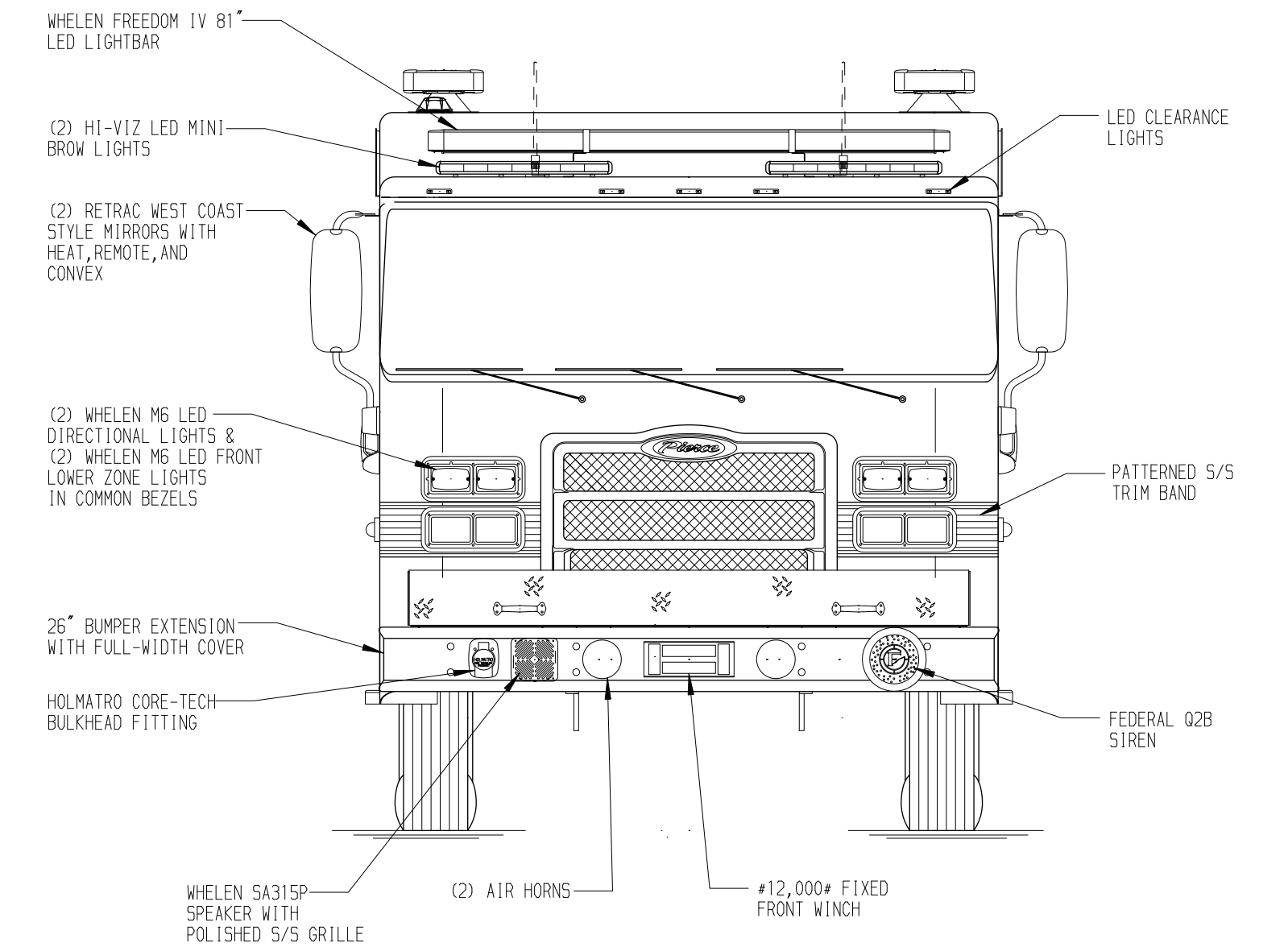
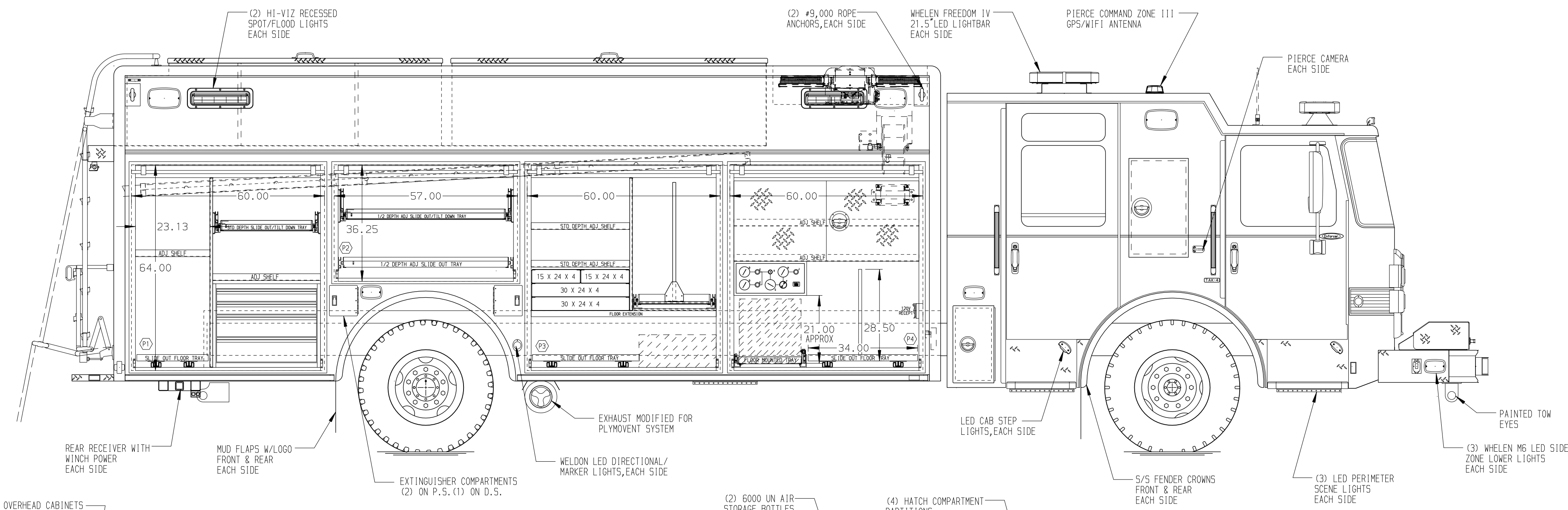
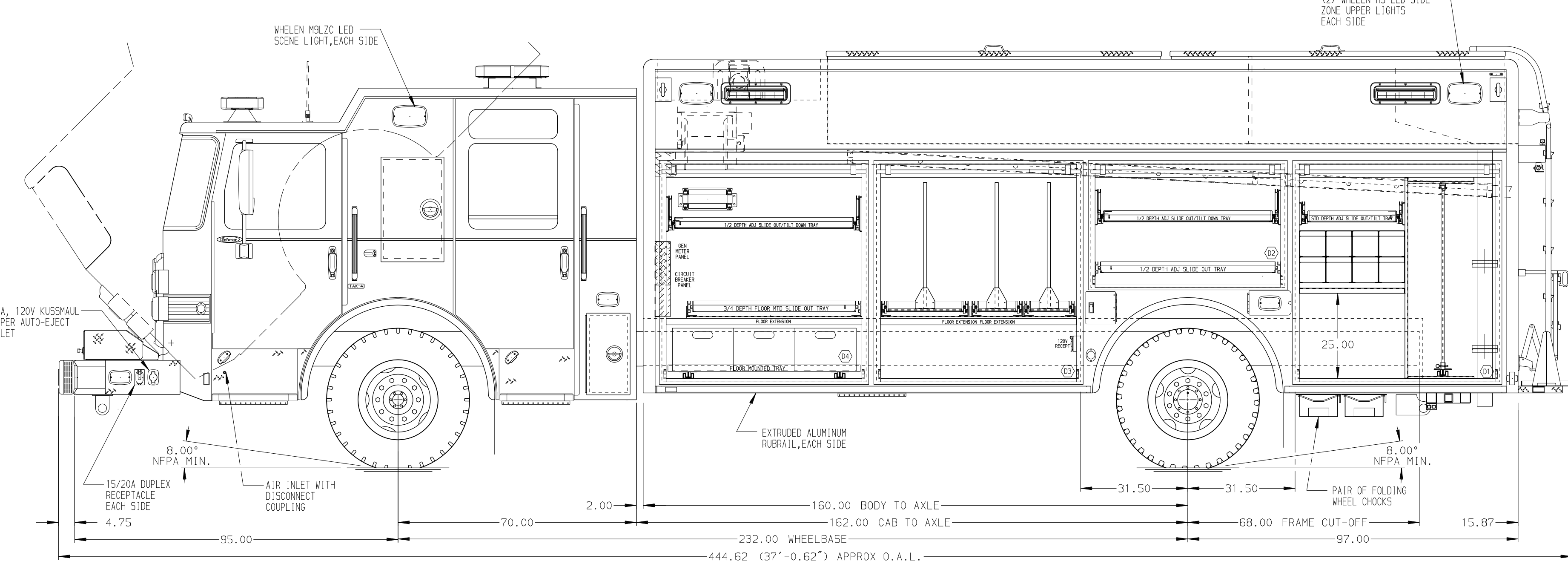


**PASSENGER'S SIDE COMPARTMENTS CONTAIN THE FOLLOWING:**

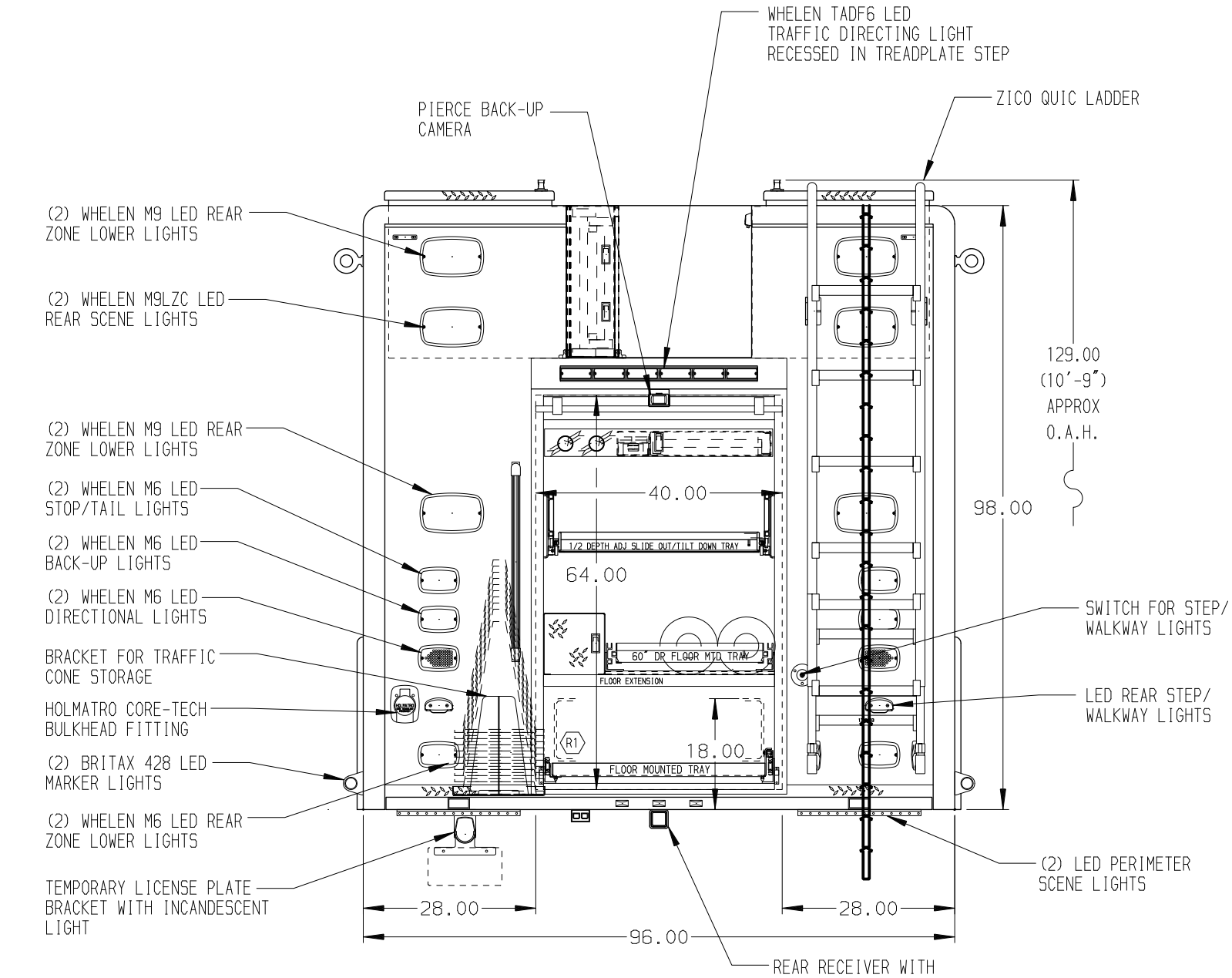
- COMPARTMENT P1 CONTAINS:**  
 - (2) STD DEPTH ADJ SHELVES  
 - (1) STD DEPTH ADJ SLIDE OUT/TILT TRAY  
 - (3) FLOOR MOUNTED TRAY  
 - (1) 4-DRAWER C-TECH CABINET  
 - (1) VERTICAL COMPARTMENT DIVIDER
- COMPARTMENT P2 CONTAINS:**  
 - (1) 1/2 DEPTH ADJ SLIDE OUT TRAY  
 - (1) 1/2 DEPTH ADJ SLIDE OUT/TILT TRAY
- COMPARTMENT P3 CONTAINS:**  
 - (1) VERTICAL COMPARTMENT DIVIDER  
 - (1) HORIZONTAL FLOOR EXTENSION  
 - (1) RACK FOR 4 AIR BAGS  
 - (2) STD DEPTH ADJ SHELVES  
 - (1) FLOOR MOUNTED TRAY  
 - (1) 2-WAY SLIDE OUT TRAY WITH TOOLBOARD
- COMPARTMENT P4 CONTAINS:**  
 - (1) CAB LIFT CONTROLLER  
 - (1) VERTICAL REAR WALL DIVIDER  
 - VERTICALLY HINGED TREADPLATE DOOR  
 - (2) STD DEPTH ADJ SHELVES  
 - (1) FLOOR MOUNTED TRAY W/SIDE SLIDES  
 - (3) FLOOR MOUNTED TRAY WITH TOOLBOARD  
 - (1) 15/20A DUPLEX RECEPTACLE  
 - (1) TOOL AIR REEL W/150' OF HOSE  
 - (1) TOOL AIR CONTROL PANEL



- REAR COMPARTMENT CONTAINS THE FOLLOWING:**
- COMPARTMENT R1 CONTAINS:**  
 - (1) RACK FOR RESCUE TRIPOD  
 - (1) HORIZONTAL FLOOR EXTENSION  
 - (1) 60\"/>



- DRIVER'S SIDE COMPARTMENTS CONTAIN THE FOLLOWING:**
- COMPARTMENT D1 CONTAINS:**  
 - (1) VERTICAL COMPARTMENT DIVIDER  
 - (1) HORIZONTAL COMPARTMENT DIVIDER  
 - (1) RACK FOR 8 SCBA BOTTLES  
 - (1) OIL DRY HOPPER  
 - (1) STD DEPTH ADJ SLIDE OUT TOOLBOARD  
 - (1) STD DEPTH ADJ SLIDE OUT/TILT TRAY
- COMPARTMENT D2 CONTAINS:**  
 - (1) 1/2 DEPTH ADJ SLIDE OUT TRAY  
 - (1) 1/2 DEPTH ADJ SLIDE OUT/TILT TRAY
- COMPARTMENT D3 CONTAINS:**  
 - (1) HORIZONTAL FLOOR EXTENSION  
 - (2) 3/4 DEPTH FLOOR MTD SLIDE OUT TRAYS WITH TOOLBOARDS  
 - (1) 2-WAY SLIDE OUT TRAY WITH TOOLBOARD  
 - (1) 15/20A DUPLEX RECEPTACLE
- COMPARTMENT D4 CONTAINS:**  
 - (1) KUSMAUL PUMP PLUS 1200 CHARGER  
 - (1) HORIZONTAL FLOOR EXTENSION  
 - (3) POLY TOOL BOXES  
 - (1) 1/2 DEPTH ADJ SLIDE OUT/TILT TRAY  
 - (1) 3/4 DEPTH FLOOR MTD SLIDE OUT TRAY  
 - (3) FLOOR MOUNTED TRAY  
 - (1) CIRCUIT BREAKER PANEL  
 - (1) GENERATOR METER PANEL  
 - (1) LIGHT TOWER CONTROLLER  
 - (1) AKRON CORD REEL WITH 200' OF 10/3 YELLOW CORD



**NOTE**  
 DIMENSIONS SHOWN ARE APPROXIMATE AND ARE SUBJECT TO MINOR DEVIATIONS AS MAY OCCUR OR BE NECESSARY IN CONSTRUCTION.  
 MINOR DETAILS NOT SHOWN.

- NOTES:**
- ONSPOT AUTOMATIC TIRE CHAINS
  - POLISHED 5/5 SCUFFPLATES ON CAB AND CREW CAB DOOR JAMBS
  - WINDOW PROTECTOR BARS ON CREW CAB WINDOWS
  - FLOOR IN CAB AND CREW CAB TO BE PADDED RUBBER
  - AMOR LED STRIP LIGHTS IN ALL BODY AND HATCH COMPARTMENTS
  - ONAN 25KW SINGLE PHASE PTO DRIVEN GENERATOR LOCATED BETWEEN THE FRAME RAILS
  - 15/20A, 120V DUPLEX RECEPTACLE LOCATED BEHIND THE OFFICER'S SEAT
  - 5/5 DRIP PAN ON EACH BODY ROLL-UP DOOR HEADER

				JOB NO.	32277
				SCALE	DATE
				1:24	14FEB18
				DRAWN BY	DHE
				CHECKED BY	CDK
				SHEET SIZE	SHEET NO.
				D	1 OF 1

REV	DATE	BY	CH	CHASSIS DATA
▽	24APR18	DHE	AZU	TITLE
▽	02APR18	DHE	AZU	MAKE
▽	30MAR18	DHE	AZU	PIERCE
▽	02MAR18	DHE	AZU	MODEL
				ENF7010

TITLE: HEAVY DUTY RESCUE NON-WALKIN  
 FOR: TAYLORS FIRE DEPARTMENT TAYLORS FIRE  
 DWG NO.: 32277AD