

**PUMPER BODY**

Long Aluminum 2nd Gen Pumper

**CHASSIS**

Enforcer Chassis

**CHASSIS AXLE, FRONT, CUSTOM**

18,000 Lb Dana Axle

**AXLE, REAR**

27,000 Lb Dana Axle

**ENGINE**

450 HP Cummins L9 Engine

**TRANSMISSION**

Allison 5th Gen, 3000 EVS P

**BUMPER**

19" Extended Stainless Steel

**CAB**

7010 Enforcer Cab

**BODY**

**WATER TANK**

1000 Gallon Poly Water Tank

**COMPT, PUMPER, REAR**

44.50" FF RollUp Rear Compt

**COMPT, PUMPER, DRIVER SIDE**

161" RollUp Full Height Front & Rear FDLR

**COMPT, PUMPER PASS. SIDE**

161" RollUp Full Height Front & Rear FDLR

**FIRE SUPPRESSION PUMPHOUSE**

52" Control Zone Top Mount

**PUMP**

1500 GPM Hale QMAX

**CROSSLAYS, 1.50"**

(2) 1.50" Standard Capacity

**CROSSLAYS, 2.50"**

(1) 2.50" Standard Capacity

**SPEEDLAYS**

Speedlays Not Required

**GENERATOR**

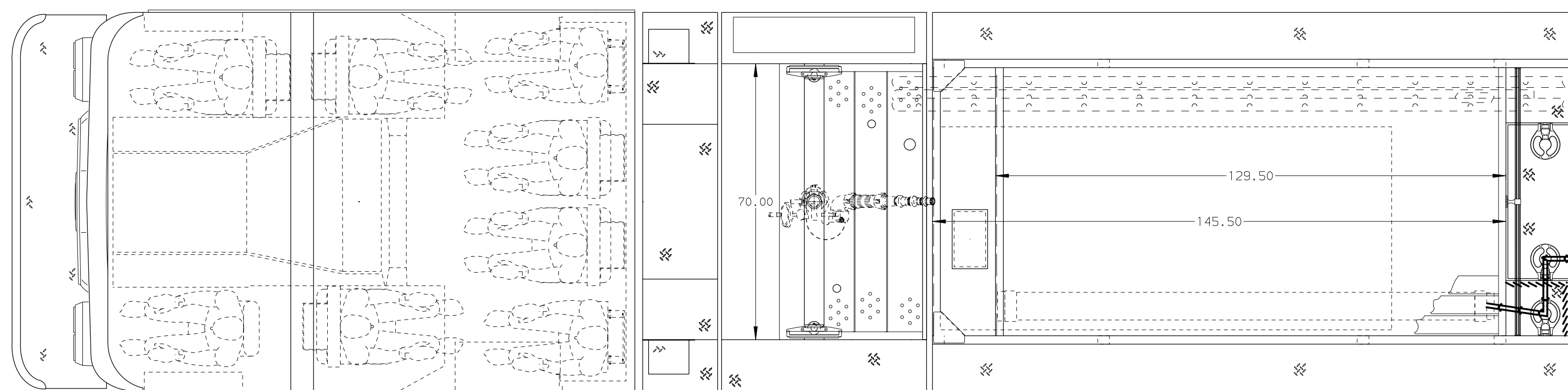
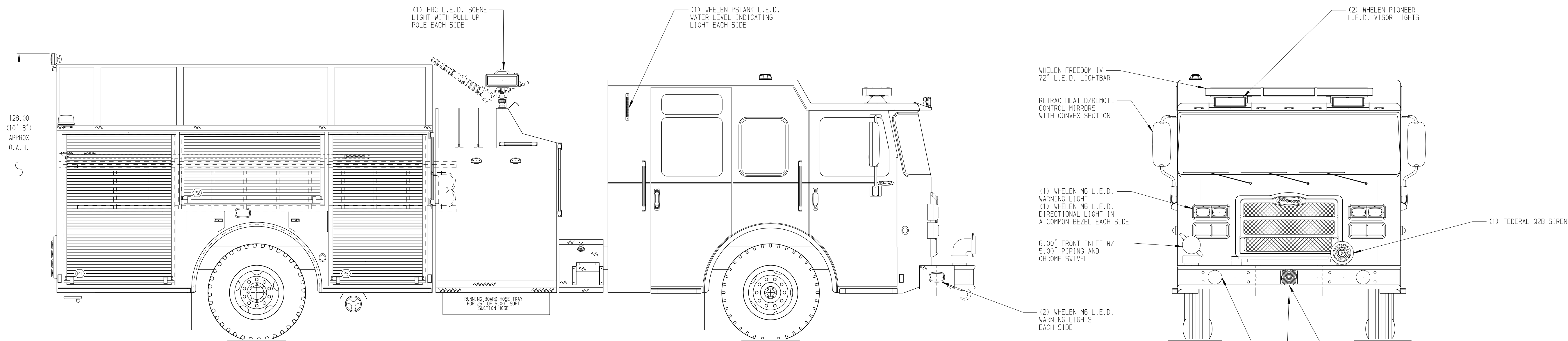
Generator Not Required

**Foam System**

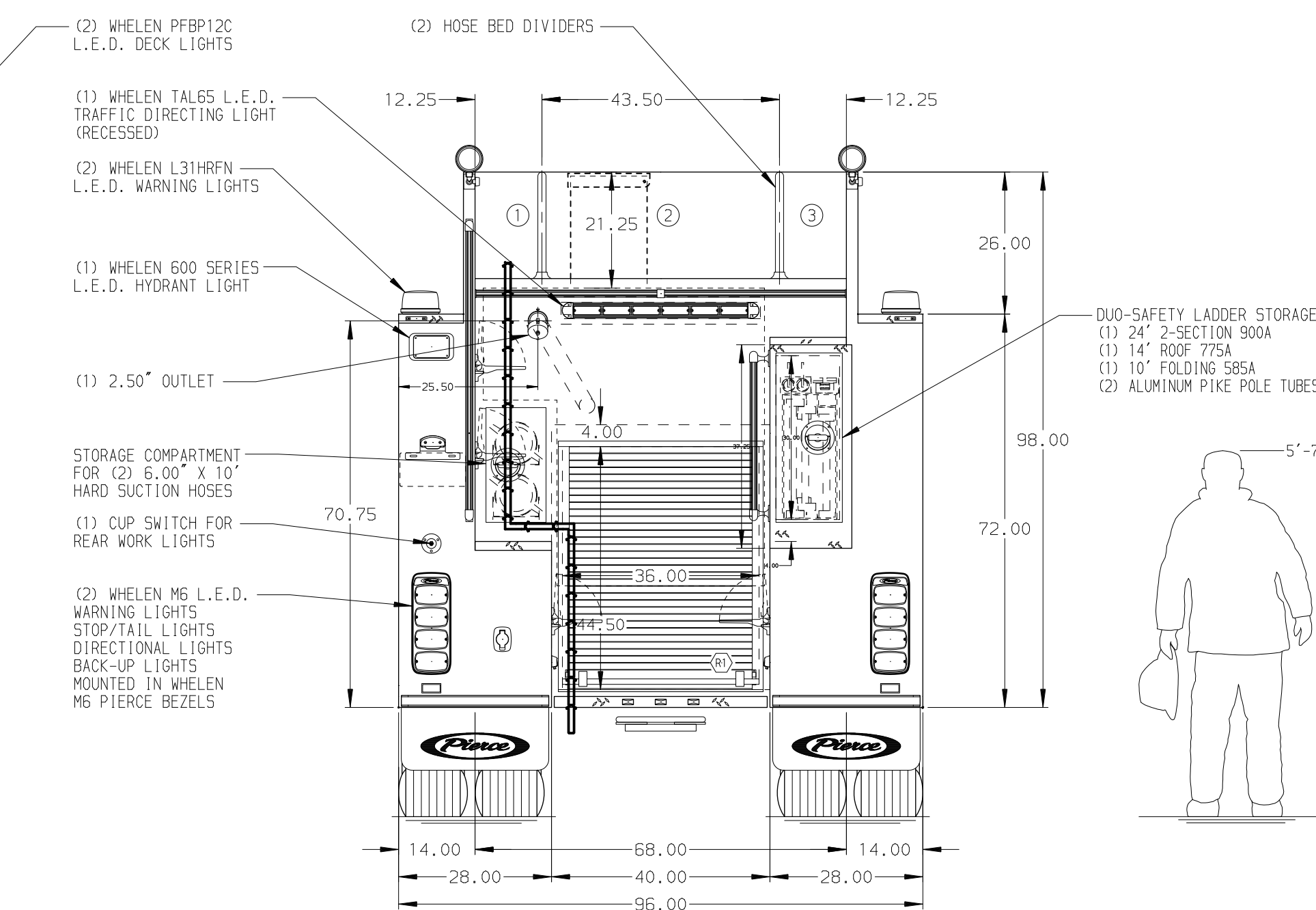
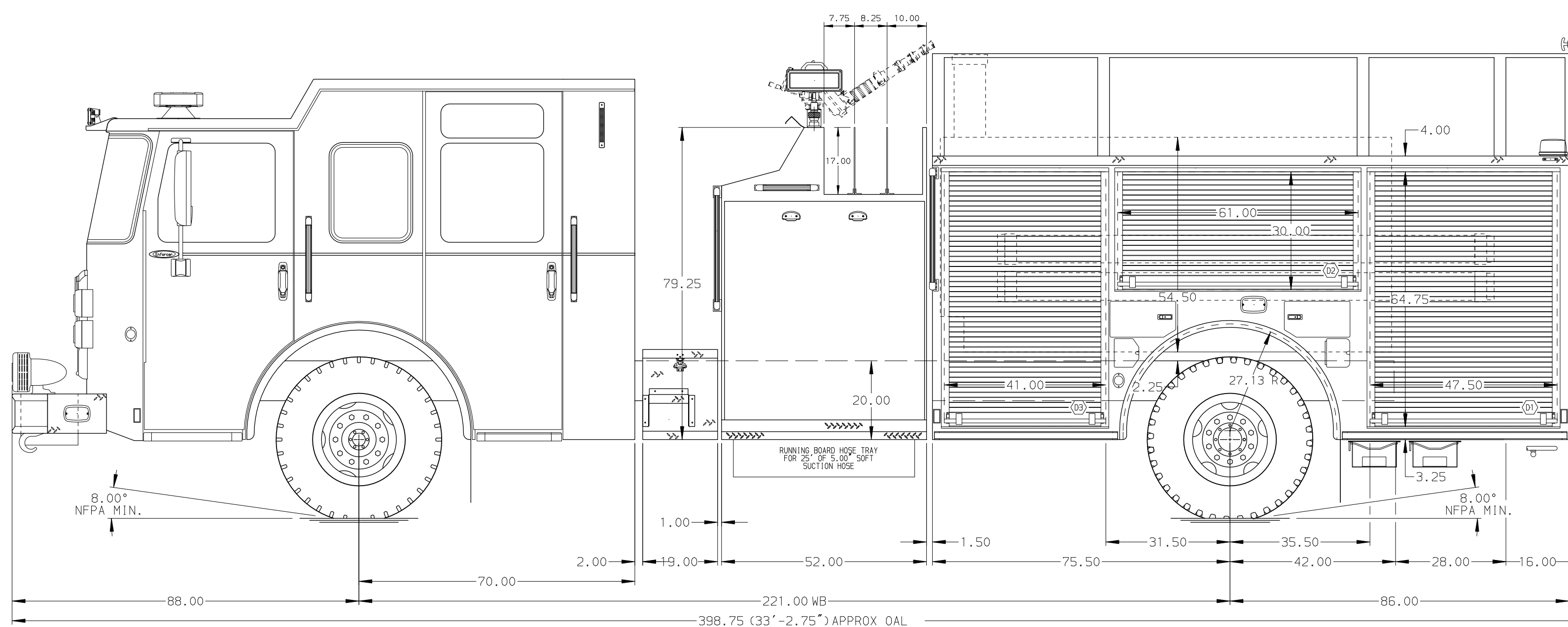
Foam System Not Required

**Foam Cell**

Foam Cell Not Required



HOSEBED CAPACITY	
<b>BED 1</b>	500' OF 3.00" D.J. POLY HOSE
<b>BED 2</b>	1000' OF 5.00" D.J. POLY HOSE
<b>BED 3</b>	500' OF 3.00" D.J. POLY HOSE



MAXIMUM O.A.L. - 399.00"

**NOTE**  
DIMENSIONS SHOWN ARE APPROXIMATE AND ARE SUBJECT TO MINOR DEVIATIONS AS MAY OCCUR OR BE NECESSARY IN CONSTRUCTION. MINOR DETAILS NOT SHOWN.

- ONE 1.50 OUTLET WITH 2.00 PIPING AND SWIVEL LOCATED IN CENTER BUMPER TRAY
- SHORELINE RECEPTACLE WITH KUSSMAUL SUPER AUTO-EJECT LOCATED ON DRIVER SIDE REAR BULKHEAD
- AIR INLET WITH DISCONNECT COUPLING IN THE DRIVER SIDE STEPWELL
- BATTERY CHARGER LOCATED IN COMPARTMENT PER SHOP ORDER
- BATTERY CHARGE INDICATOR LOCATED ON THE DRIVER SIDE SEAT RISER
- SIX ADJUSTABLE SHELVES IN COMPARTMENTS PER SHOP ORDER
- ONE FLOOR MOUNTED SLIDE-OUT TRAY IN COMPARTMENT PER SHOP ORDER

REV	DATE	BY	CH	ENFORCER
04MAY18	COL	SHE		PIERCE
27FEB18	COL	KBO		MODEL

		JOB NO.	32302
		SCALE	DATE
TITLE	Pierce Pumper Approval Drawing		
MAKE	-		
FOR	Wellsville Fire Department		
DWG NO.	32302AD		
DRAWN BY	COL	CHECKED BY	KBO
SHEET SIZE	D	SHEET NO.	1 OF 1