

PASSENGER'S SIDE COMPARTMENTS CONTAIN THE FOLLOWING:

COMPARTMENT P1 CONTAINS:

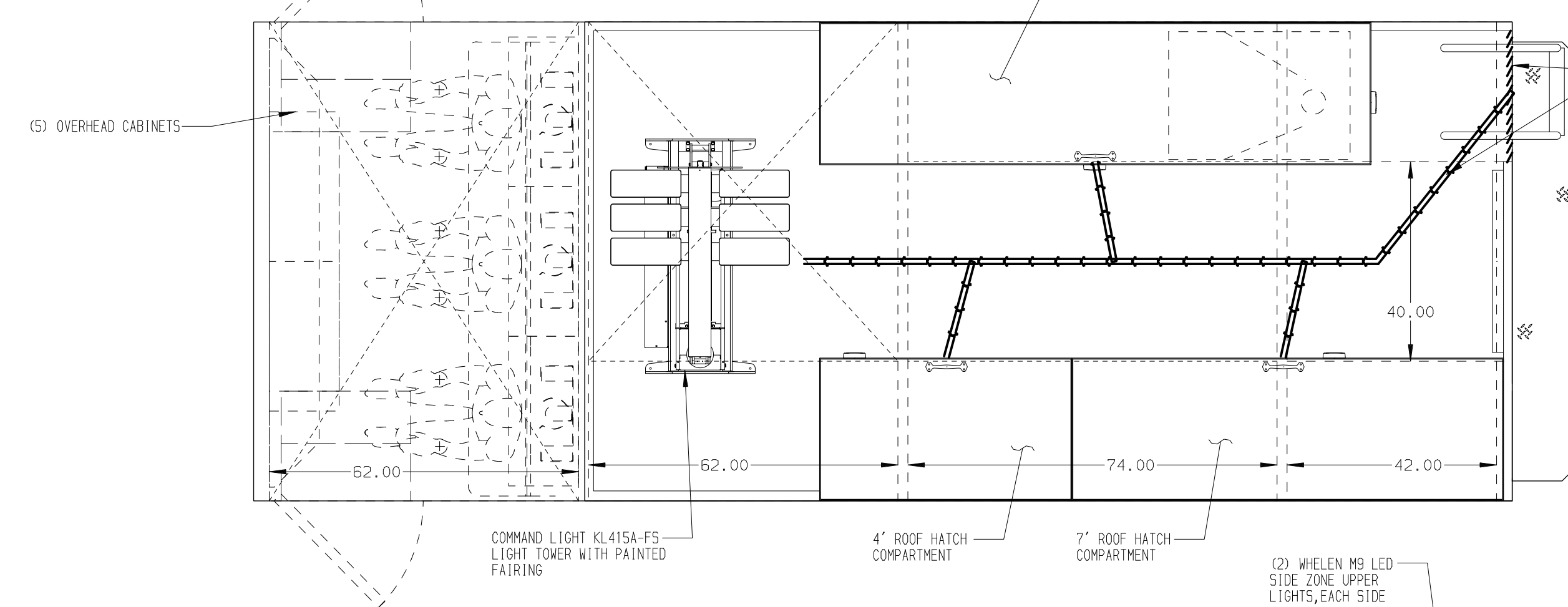
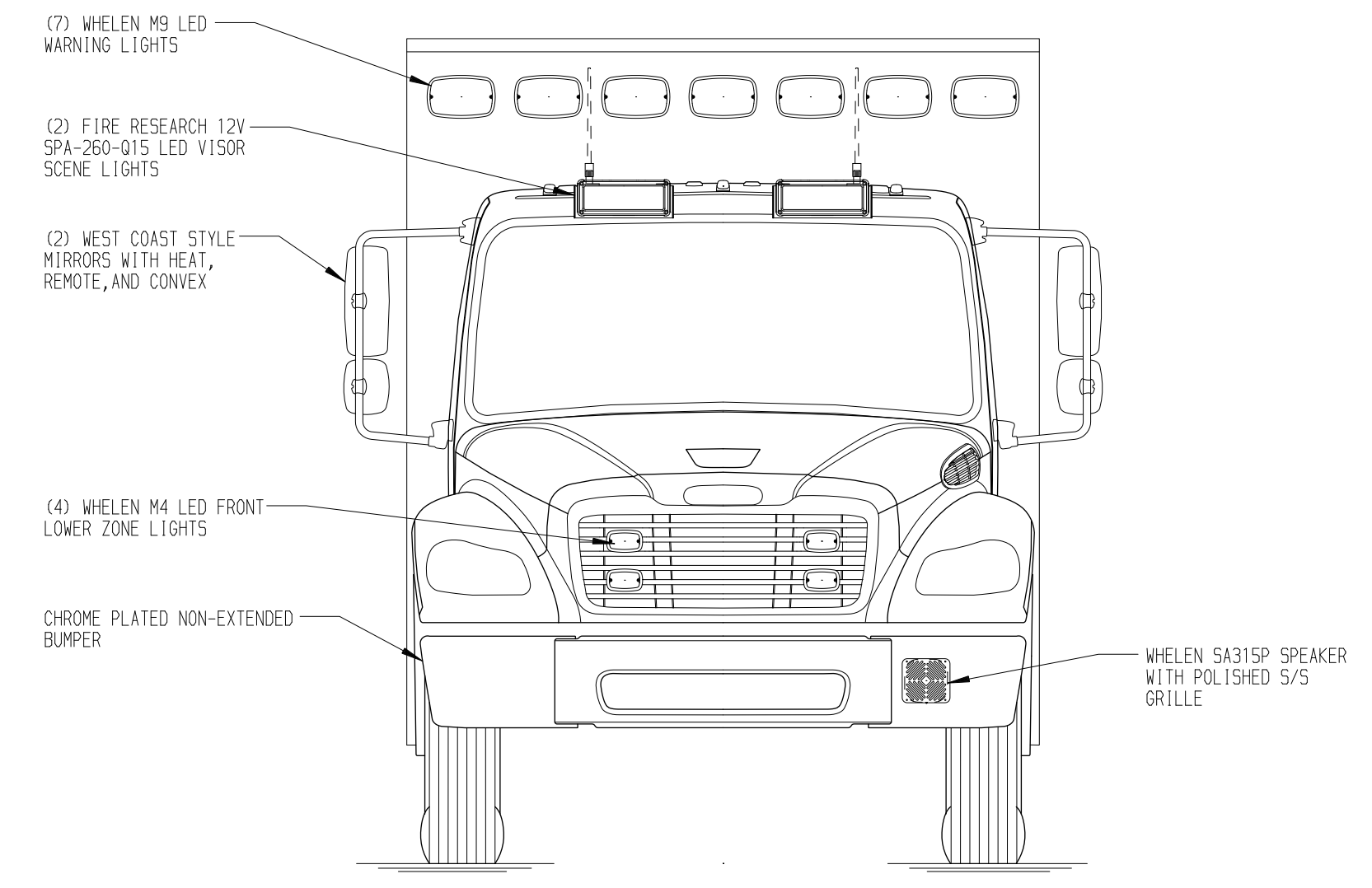
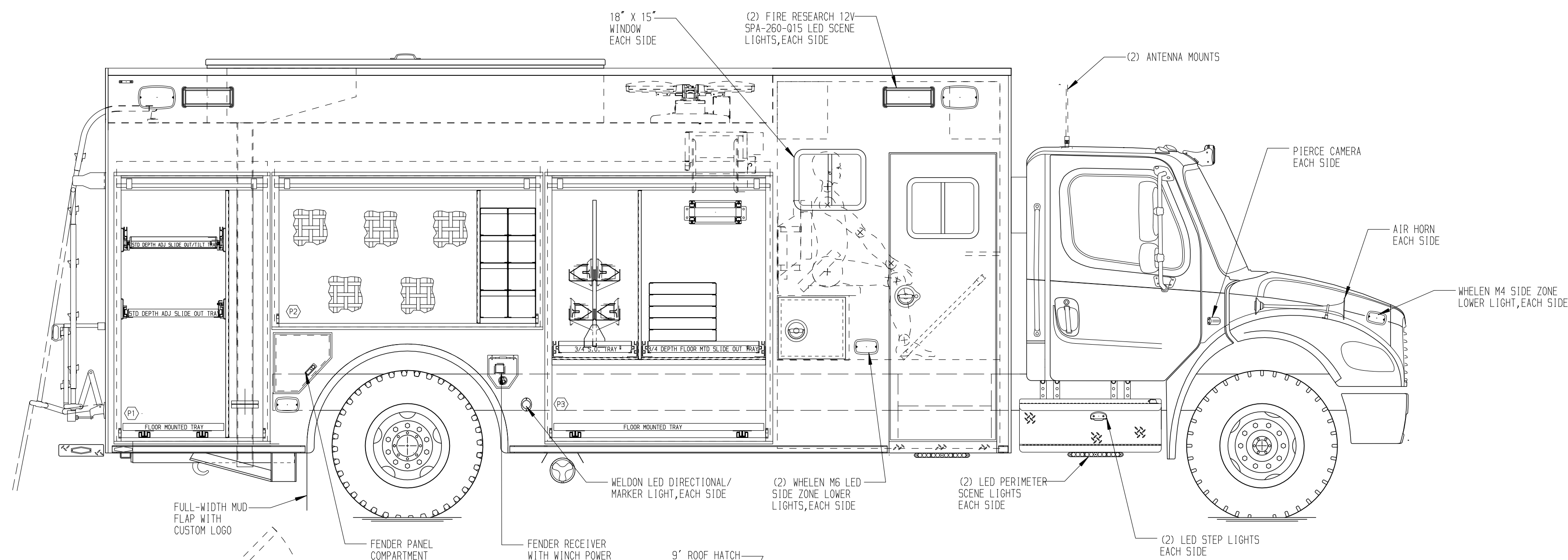
- (1) 22" DP ADJ SLIDE OUT TRAY
- (1) 22" DP ADJ SLIDE OUT/TILT TRAY
- (1) VERTICAL COMPARTMENT DIVIDER
- (1) OIL DRY HOPPER
- (1) FLOOR MOUNTED TRAY

COMPARTMENT P2 CONTAINS:

- (1) VERTICAL COMPARTMENT DIVIDER
- (1) VERTICAL REAR WALL DIVIDER
- CARGO RETENTION NETTING
- (1) RACK FOR 8 SCBA BOTTLES

COMPARTMENT P3 CONTAINS:

- (4) ADJUSTABLE SHELVES ON TOOLBOARD
- (1) 62" DP FLOOR MTD SLIDE OUT TRAY W/TOOLBOARD
- (1) 62" DP FLOOR MTD SLIDE OUT TRAY
- (1) VERTICAL COMPARTMENT DIVIDER
- (1) VERTICAL REAR WALL DIVIDER
- (1) HORIZONTAL FLOOR EXTENSION
- (1) RACK FOR 5 AIR BAGS
- (1) FLOOR MOUNTED TRAY
- (1) AKRON CORD REEL WITH 200' OF 10/3 BLACK CORD



REAR COMPARTMENT CONTAINS THE FOLLOWING:

COMPARTMENT R1 CONTAINS:

- (2) 110" DP SLIDE OUT TRAYS W/TOOLBOARDS
- (1) HORIZONTAL FLOOR EXTENSION
- (1) 42" DP FLOOR MOUNTED TRAY

DRIVER'S SIDE COMPARTMENTS CONTAIN THE FOLLOWING:

COMPARTMENT D1 CONTAINS:

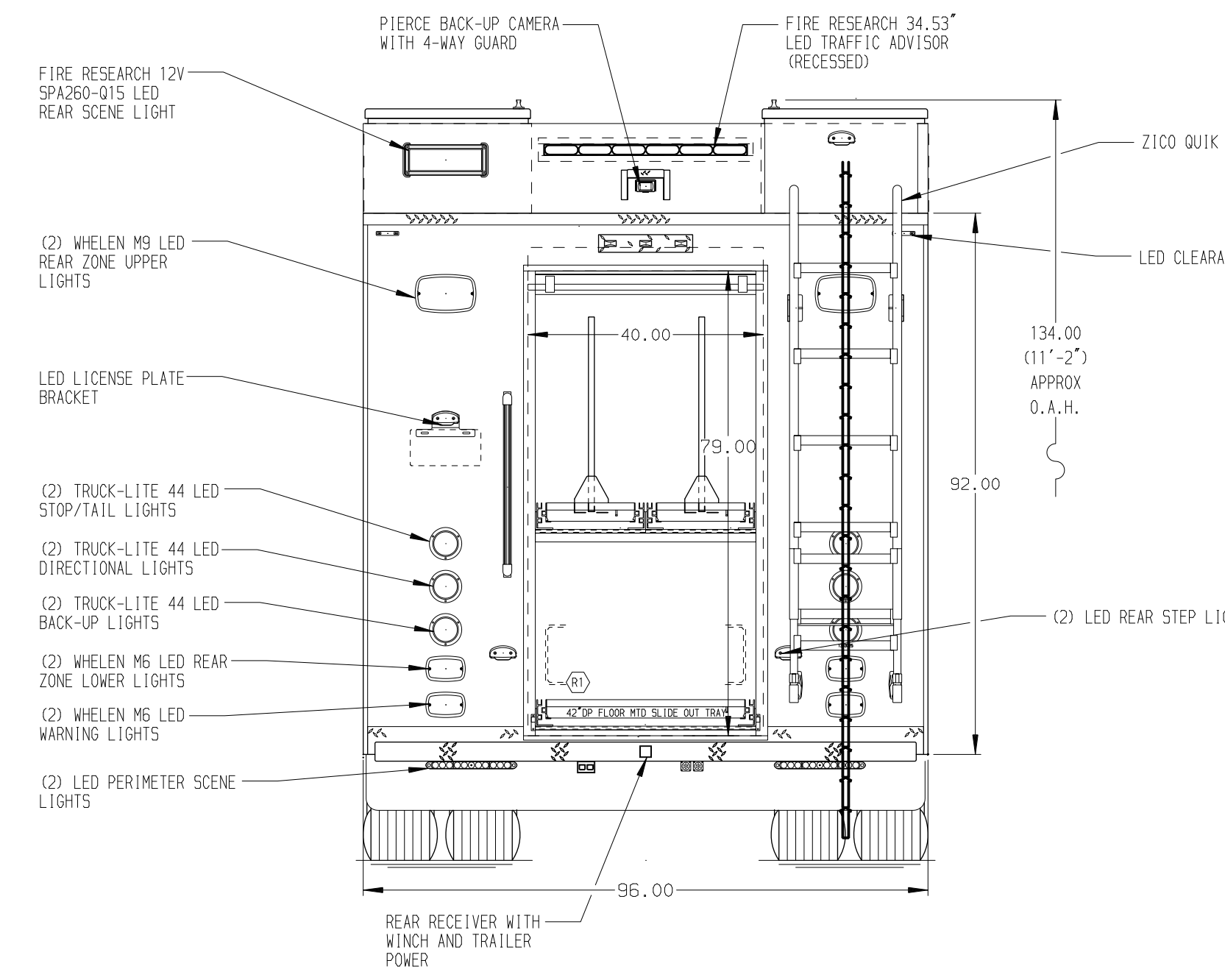
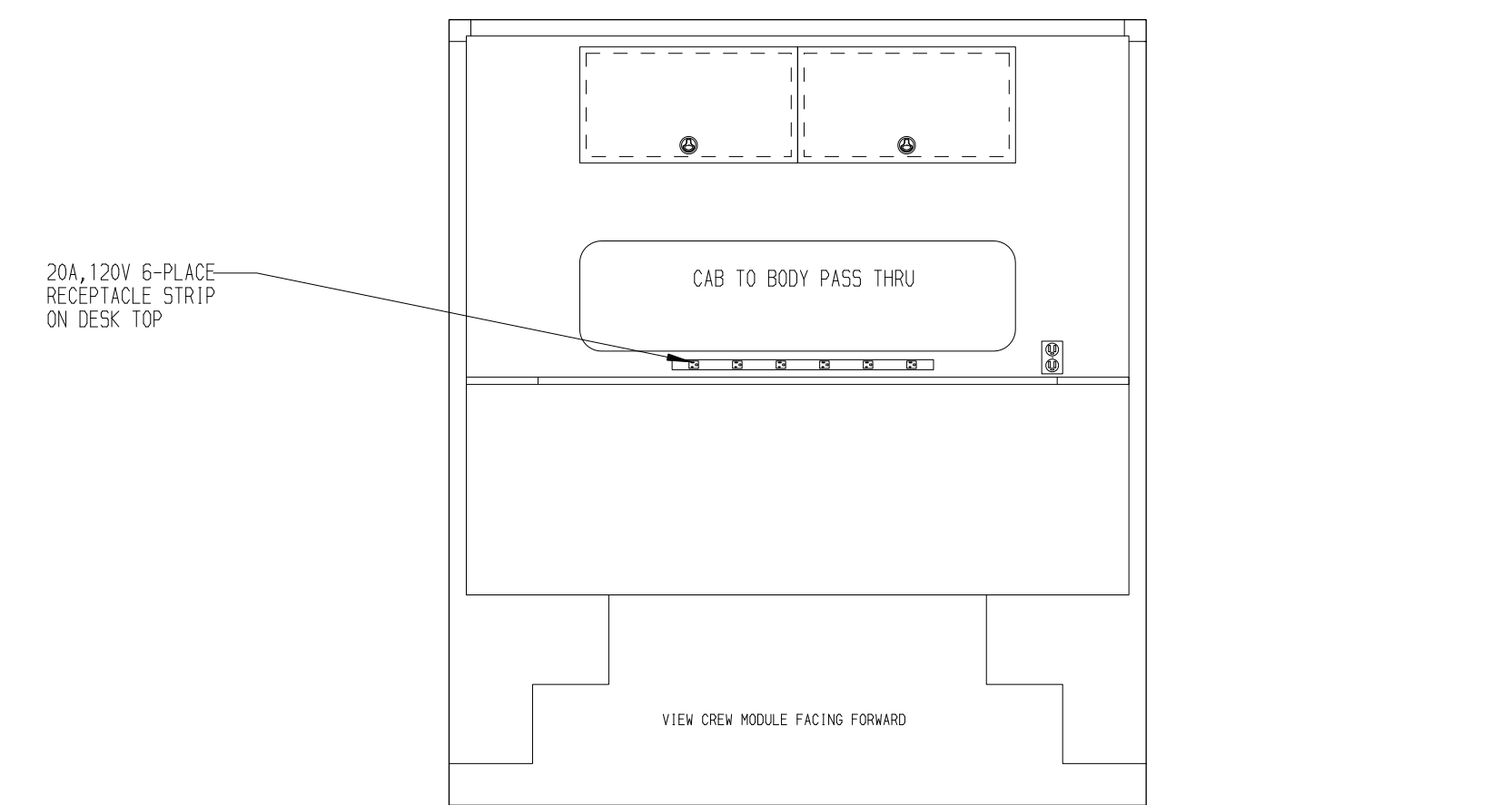
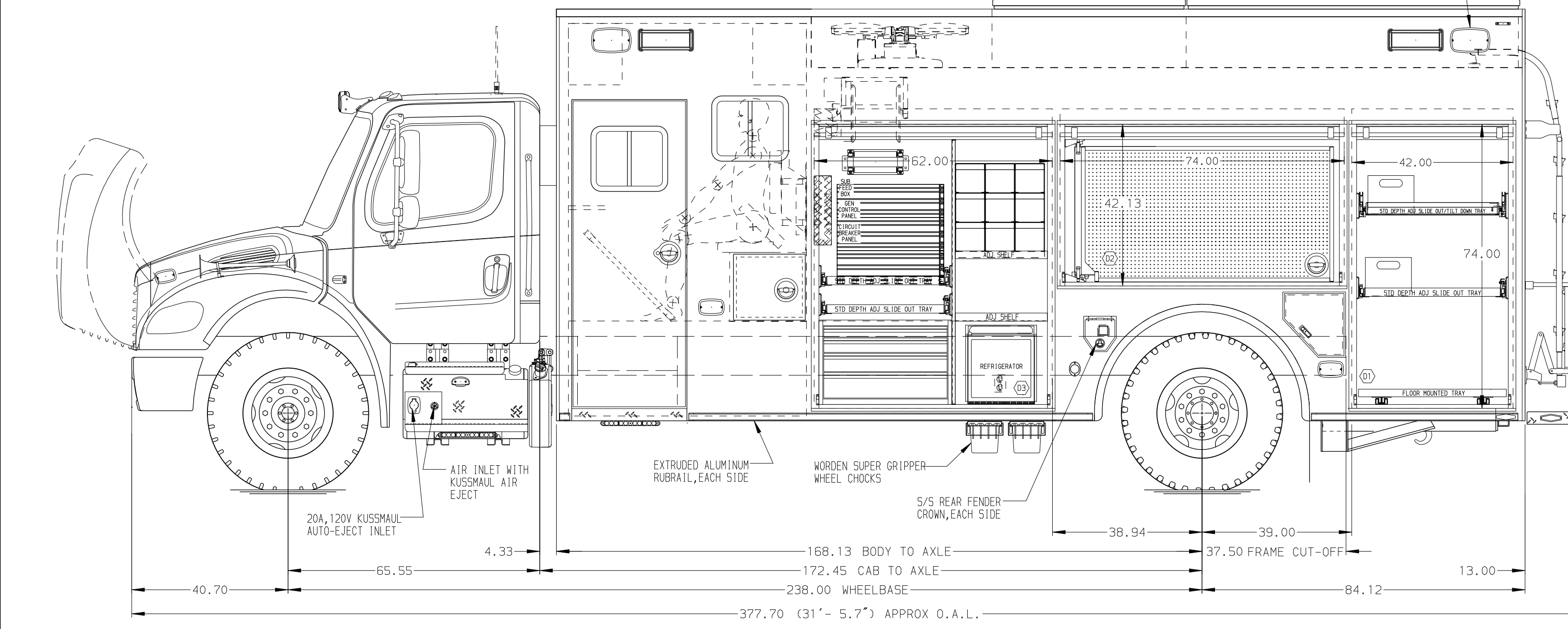
- (1) 22" DP ADJ SLIDE OUT TRAY
- (1) 22" DP ADJ SLIDE OUT/TILT TRAY
- (2) POLY TOOL BOXES
- COMPARTMENT SEALED FOR GAS COMPONENTS
- (1) FLOOR MOUNTED TRAY

COMPARTMENT D2 CONTAINS:

- (2) SWING OUT TOOLBOARDS
- (1) VERTICAL REAR WALL DIVIDER

COMPARTMENT D3 CONTAINS:

- (1) WFCO 45 AMP CHARGER
- (2) ADJUSTABLE SHELVES
- (1) 22" DP ADJ SLIDE OUT TRAY W/MATTING
- (1) 22" DP ADJ SPECIAL SLIDE OUT TRAY WITH PAC TRAC ON WALLS
- (1) VERTICAL COMPARTMENT DIVIDER
- (1) VERTICAL REAR WALL DIVIDER (REAR)
- (1) RACK FOR 9 SCBA BOTTLES
- (1) NORCOLD 2.7 CF. REFRIGERATOR
- (1) CIRCUIT BREAKER PANEL
- (1) SUB FEED BOX
- (1) GENERATOR METER PANEL
- (1) COMMAND LIGHT CONTROLLER
- (1) AKRON CORD REEL WITH 200' OF 10/3 BLACK CORD
- (1) 15/20A, 120V 4-PLACE RECEPTACLE
- (1) 4-DRAWER C-TECH CABINET
- (1) VERTICAL REAR WALL DIVIDER



NOTE
DIMENSIONS SHOWN ARE APPROXIMATE AND ARE SUBJECT TO MINOR DEVIATIONS AS MAY OCCUR OR BE NECESSARY IN CONSTRUCTION. MINOR DETAILS NOT SHOWN.

NOTES:

1. ONAN 15KW SINGLE PHASE PTO DRIVEN GENERATOR WITH SPLASH GUARD LOCATED BETWEEN THE FRAME RAILS
2. INSTA-CHAIN AUTOMATIC TIRE CHAINS
3. PIERCE LED STRIP LIGHTS IN ALL BODY AND HATCH COMPARTMENTS
4. 15/20A, 120V DUPLEX RECEPTACLE LOCATED BEHIND OFFICER'S SEAT

OVERALL LENGTH TARGET 33'

CLEAR DOOR WIDTH KEY

AMOR ROLL UP DOORS:	-2 1/4"
CORTITE ROLL UP DOORS:	-2 1/2"
PIERCE DOUBLE LAP DOORS:	-4 1/4"
PIERCE LIFT-UP LAP DOORS:	-1 1/2"

(EX: 60" F-F - 2 1/4" = 57 3/4" CLEAR)
(F-F) = FRAME TO FRAME

CUSTOMER APPROVAL

APPROVED BY: _____
DATE: _____

REV	DATE	BY	CH
26APR18	DHE	CDK	M2-106

Pierce MANUFACTURING INC.

JOB NO. 32309
SCALE 1:24
DATE _____

TITLE ENCORE RESCUE VEHICLE
CRW. 62.74.42
MAKE BELLEVILLE VFD
FOR BELLEVILLE, WI
MODEL M2-106
DWG NO. 32309AD

DRAWN BY DHE 11APR18
CHECKED BY AZU 16APR18
SHEET SIZE D SHEET NO. 1 OF 1

BID#584