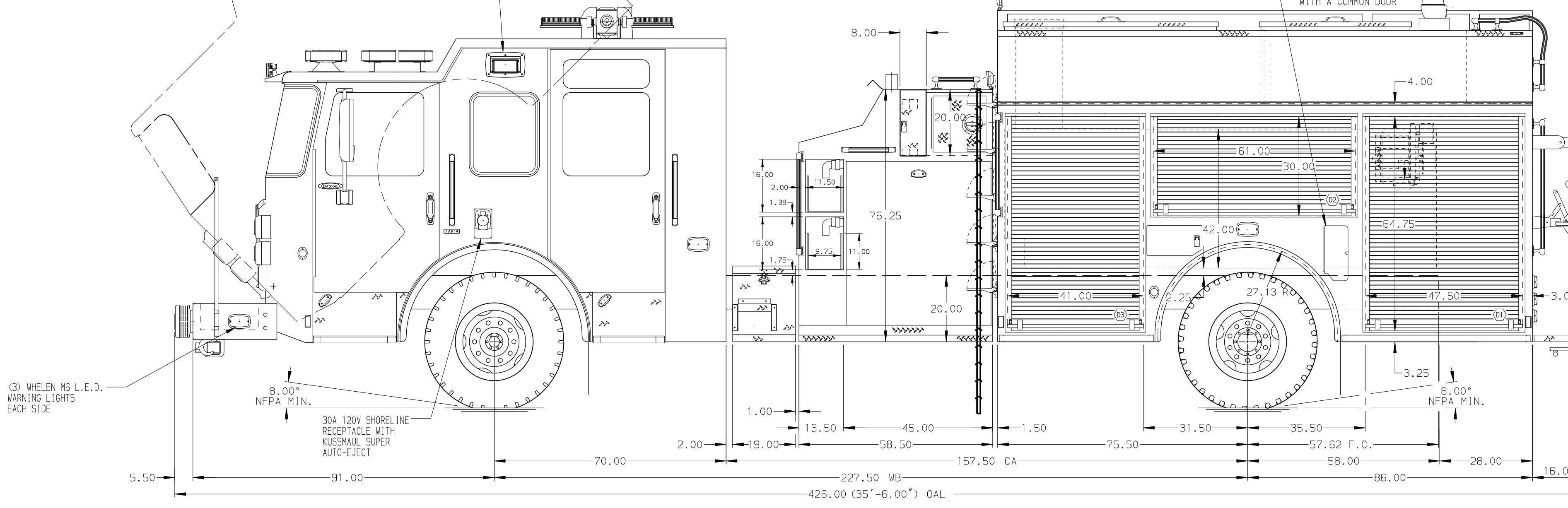
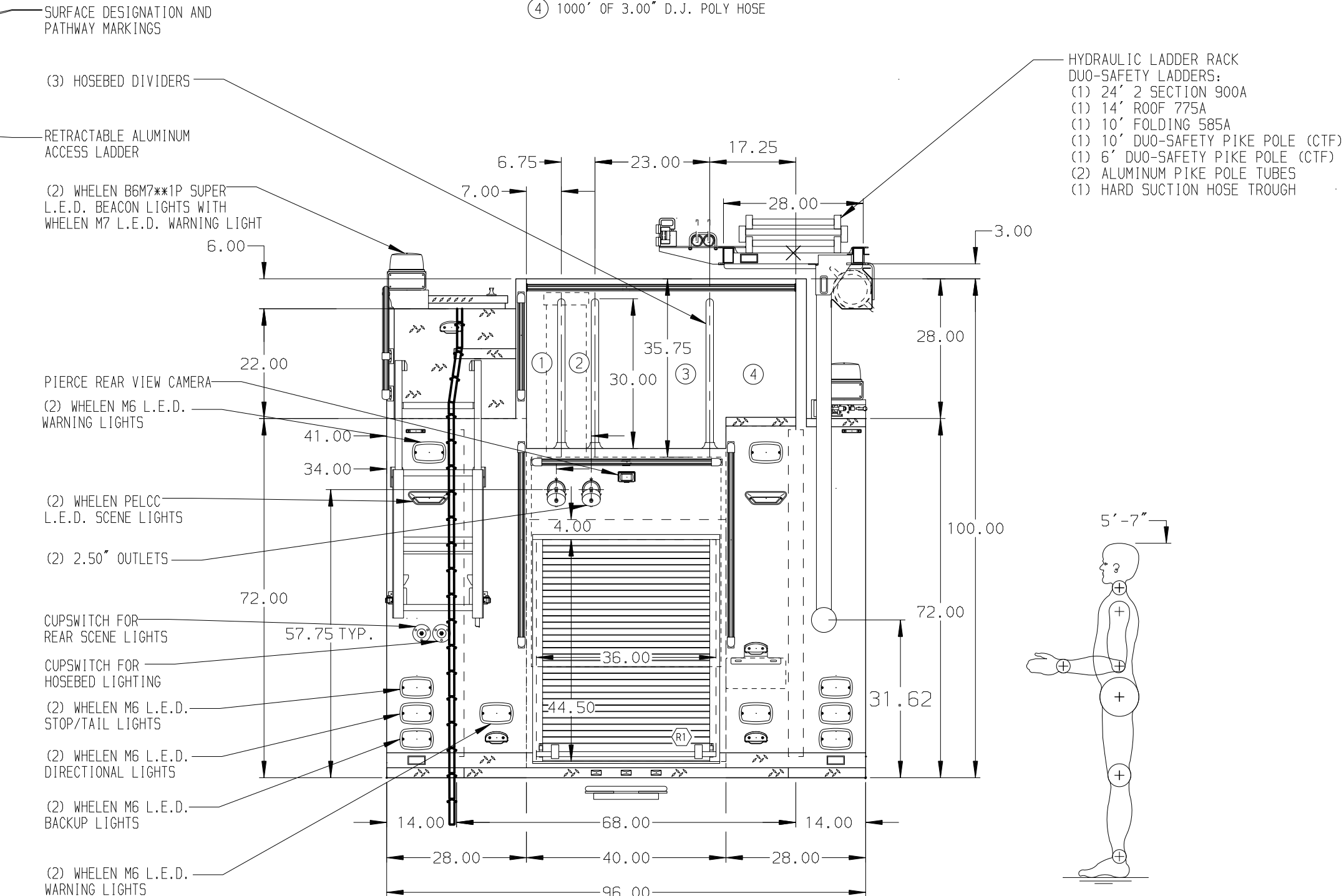


- HOSEBED CAPACITIES
- ① 200' OF 3.00" D.J. POLY HOSE
 - ② 200' OF 2.50" D.J. POLY HOSE
 - ③ 1000' OF 4.00" D.J. POLY HOSE
 - ④ 1000' OF 3.00" D.J. POLY HOSE



ALUMINUM BODY

NOTE
DIMENSIONS SHOWN ARE APPROXIMATE AND ARE SUBJECT TO MINOR DEVIATIONS AS MAY OCCUR OR BE NECESSARY IN CONSTRUCTION. MINOR DETAILS NOT SHOWN.

1. MOUNTING BRACKETS AND WHEEL CHOCKS (CTF)
2. AIR OUTLET WITH SHUT OFF VALVE ON D.S. PUMP PANEL
3. BATTERY CHARGER LOCATED IN D3
4. BATTERY CHARGER INDICATOR LOCATED ON DRIVER'S SEAT RISER
5. DUAL L.E.D. LIGHT STRIPS LOCATED IN HOSE BED
6. DRIP PAN GUARD FOR ROLL-UP DOOR IN R1
7. ADJUSTABLE FULL WIDTH/DEPTH SHELVES THREE IN D1 AND P3, TWO IN D3, AND ONE IN R1, P1, AND P2
8. ONE ADJUSTABLE SLIDE-OUT TRAY IN R1
9. ONE ADJUSTABLE TILTING SLIDE-OUT TRAY IN D2
10. ONE FLOOR MOUNTED SLIDE-OUT TRAY IN D1, R1, AND P1

11. SLIDE-OUT TOOL BOARD WITH PEGBOARD PATTERN IN D3
12. ONE VERTICAL PARTITION IN D3 AND P2
13. ONE HANNAY ELECTRIC REWIND CORD REEL MODEL 1616-17-18 WITH 100' OF 10/3 CABLE IN D1
14. GENERATOR (CTF) IN D1
15. 120 NEMA RECEPTACLE IN P1 AND P3

CUSTOMER APPROVAL			
APPROVED BY:		CHASSIS DATA	TITLE
DATE:		MAKE	FOR
		PIERCE	DWG NO.
		MODEL	
REV	DATE	BY	CH
		ENFORCER	



1500-D-750P, 161", FULL HEIGHT, FULL DEPTH D.S. & P.S.
(2) SPD-LAYS, DELUGE, GENERATOR, LIGHT TOWER, CABLE REEL

LONGWOOD FIRE DEPARTMENT
LONGWOOD, FLORIDA

32315AD

JOB NO.	32315
SCALE	1:24
DATE	
DRAWN BY	LST
CHECKED BY	AZA
SHEET SIZE	D
SHEET NO.	1 OF 1