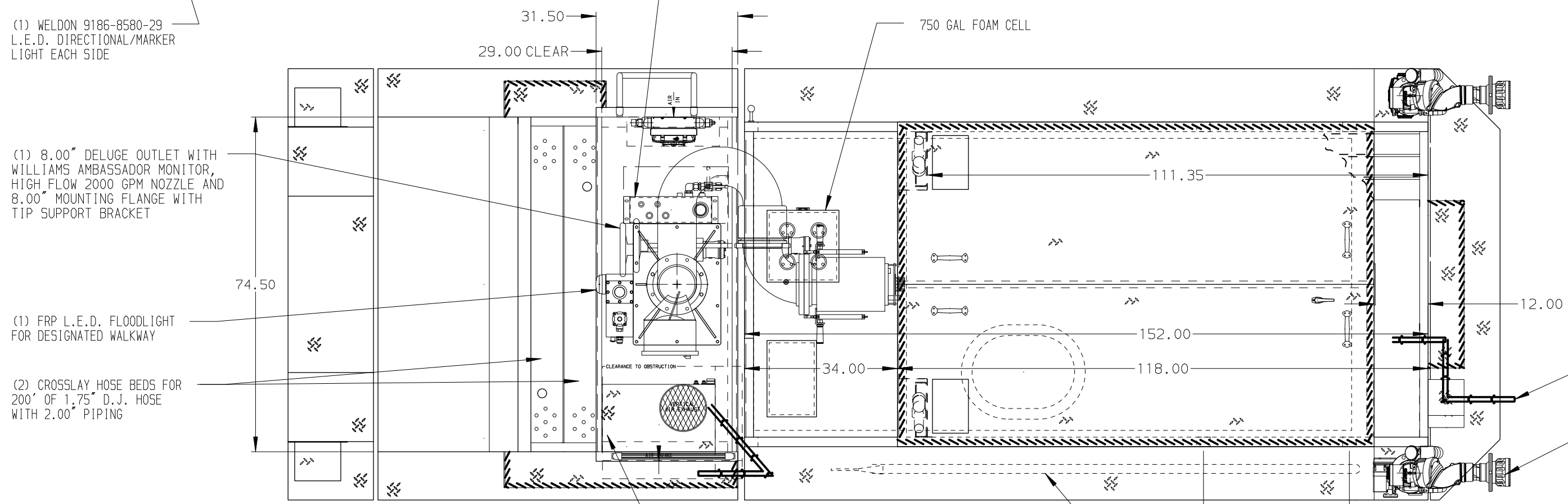
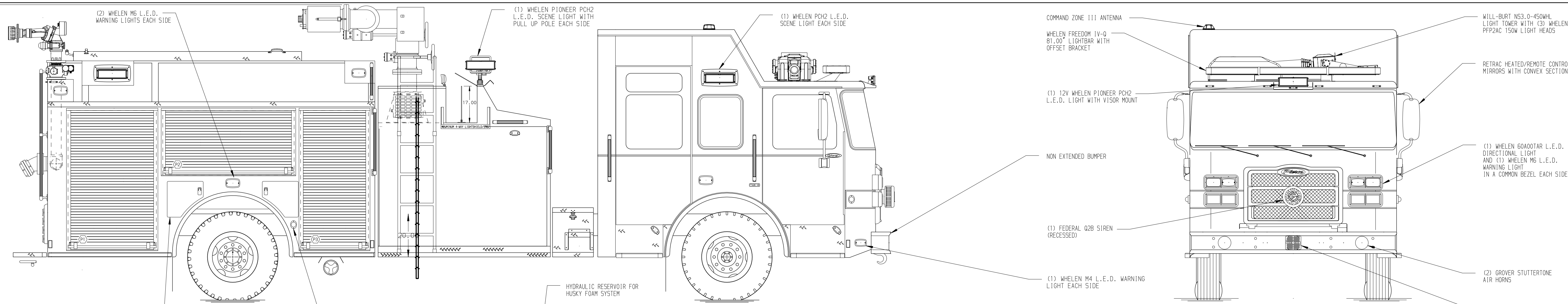
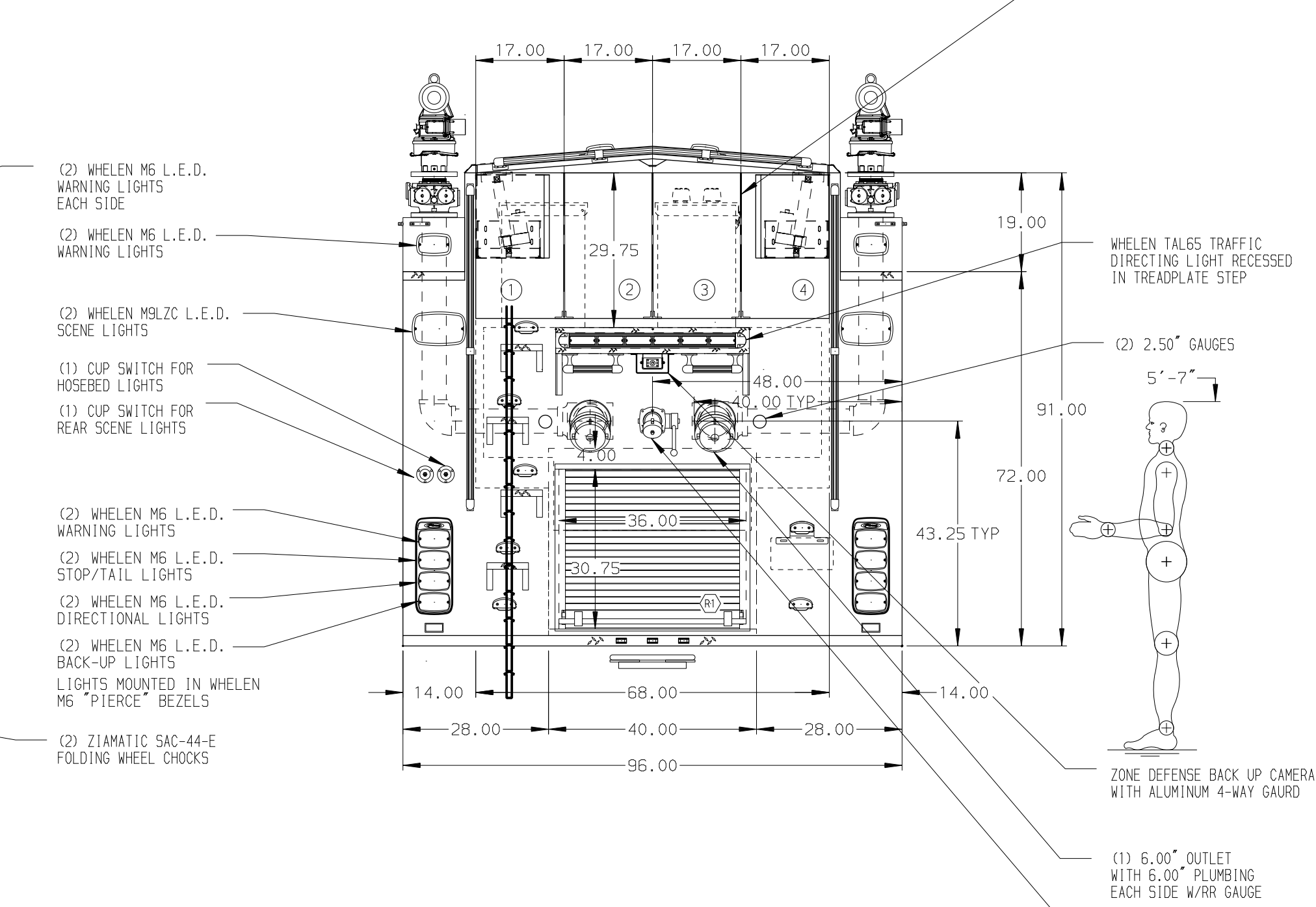
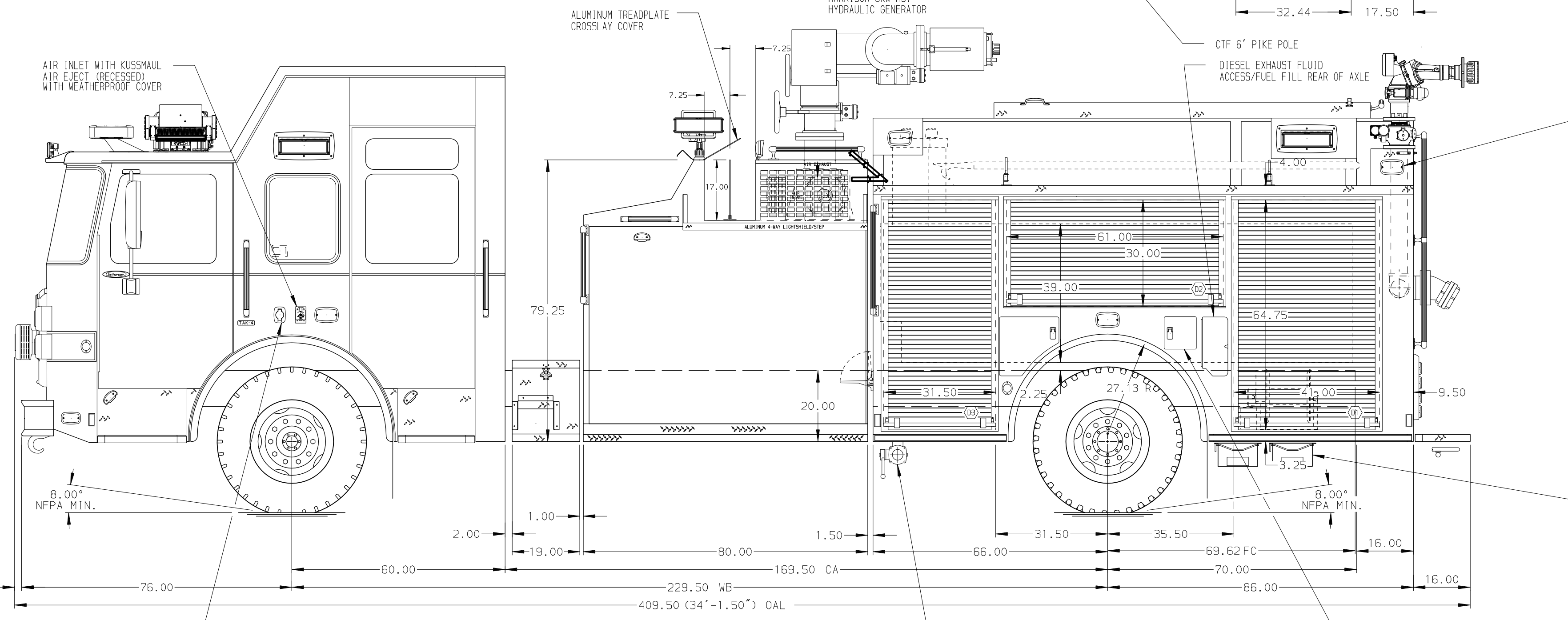


141.00
(11'-9")
APPROX
O.A.H.



- HOSEBED CAPACITIES
- ① - 600' OF 3.00" & 50' OF 7.25" HOSE
 - ② - 600' OF 5.00" HOSE
 - ③ - 600' OF 5.00" HOSE
 - ④ - 600' OF 3.00" & 50' OF 7.25" HOSE



ALUMINUM BODY

NOTE
DIMENSIONS SHOWN ARE APPROXIMATE AND ARE SUBJECT TO MINOR DEVIATIONS AS MAY OCCUR OR BE NECESSARY IN CONSTRUCTION.
MINOR DETAILS NOT SHOWN.

1. BATTERY CHARGER LOCATED IN COMPARTMENT D3
2. BATTERY CHARGER INDICATOR BEHIND DRIVER'S SEAT DISPLAYED THROUGH WINDOW
3. DUAL L.E.D. LIGHT STRIPS LOCATED IN HOSE BED
4. DRIP PAN GUARD FOR ROLL-UP DOOR LOCATED ON ALL ROLL-UP DOORS
5. ONE FULL WIDTH/DEPTH FLOOR MOUNTED SLIDE-OUT TRAY WITH SIDE SLIDES IN COMPARTMENT D1, D3, P1, & P3
6. ONE FULL WIDTH/DEPTH ADJUSTABLE SHELF LOCATED IN COMPARTMENT D1, P1, & P3, TWO IN D3
7. PAC TRAC ON THE REAR WALL OF COMPARTMENT D2
8. HORIZONTAL EQUIPMENT MOUNTING TRACKS IN COMPARTMENT P1
9. ZIC0 AIR BOTTLE HOLDER WITH STRAP MOUNTED ON ADJUSTABLE TRACKS IN COMPARTMENT P2
10. CIRCUIT BREAKER PANEL IN COMPARTMENT D3
11. ONE AKRON ELECTRIC REWIND CORD REEL (ERCW-15-10) WITH 200' OF 12/3 CABLE LOCATED IN COMPARTMENT D1 ON FLOOR

CUSTOMER APPROVAL			
APPROVED BY:			
DATE:			
CHASSIS DATA	TITLE	3000-D-1000P 250G WATER, 750 FOAM, 152" PUMPER BODY (2)XLAYS, (3)DELUGE MONITORS, HUSKY 300 FOAM SYSTEM	
MAKE	FOR	MARATHON PETROLEUM COMPANY ROBINSON, ILLINOIS	
PIERCE	DWG NO.	32372AD	
MODEL			
ENFORCER			

		JOB NO.	32372
		SCALE	1:24
		DATE	
DRAWN BY	MMF	DATE	16MAR18
CHECKED BY	CCA	DATE	21MAR18
SHEET SIZE	D	SHEET NO.	1 OF 1