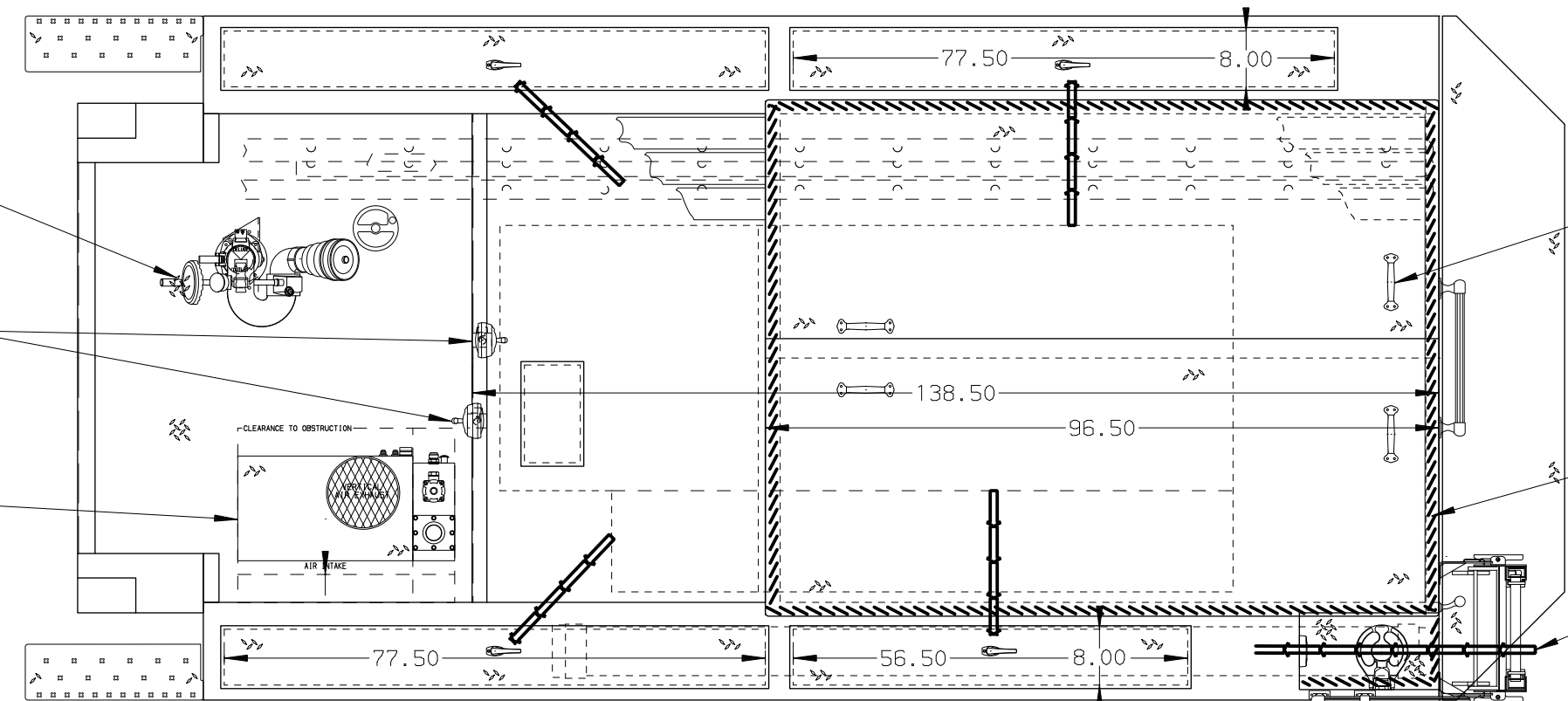
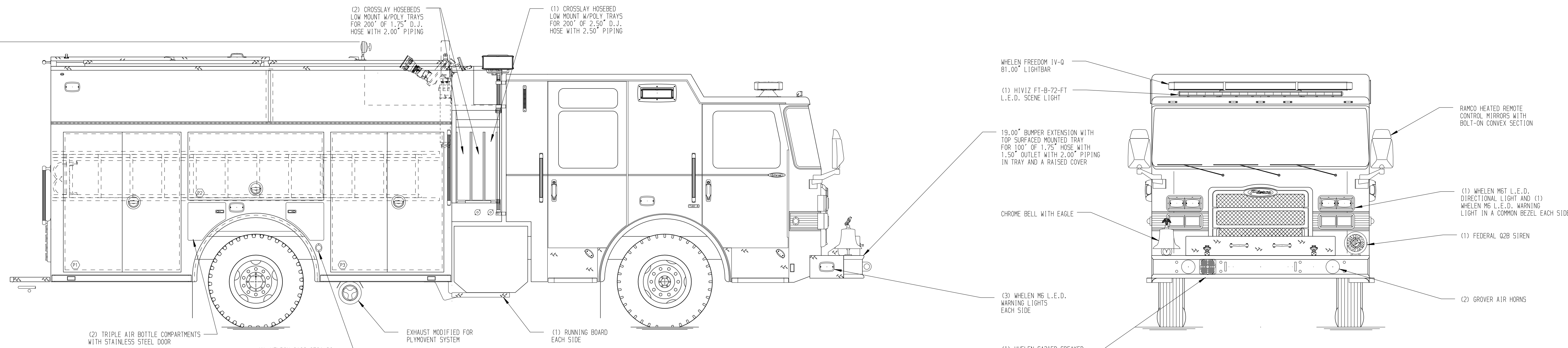
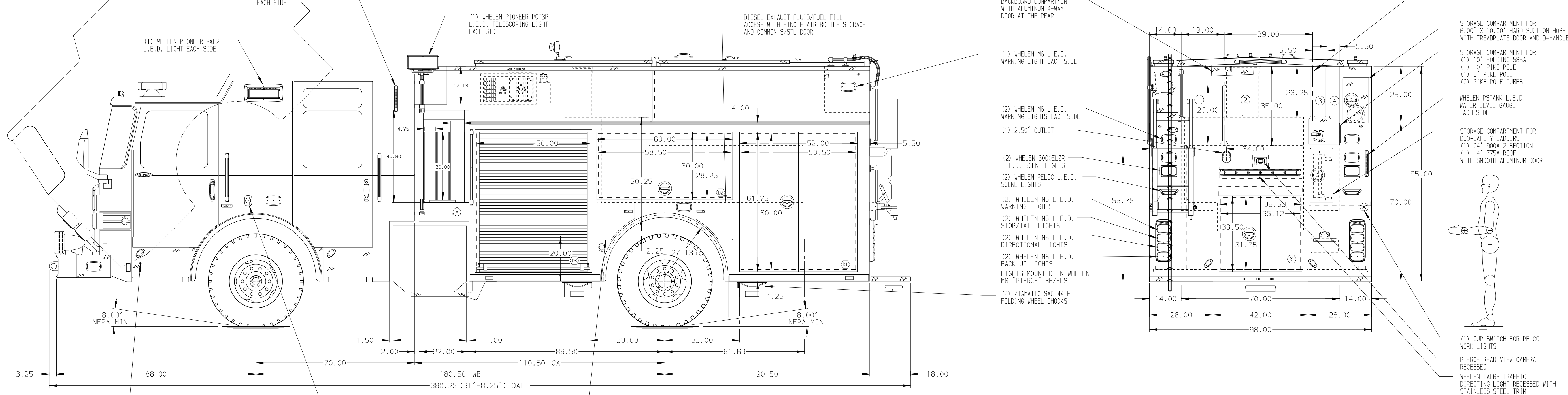


128.50
(10'-8")
APPROX
O.A.H.



- HOSEBED CAPACITIES**
- ① 600' OF 2.50" D.J. HOSE
 - ② 1000' OF 5.00" D.J. HOSE
 - ③ 150' OF 1.75" D.J. HOSE
 - ④ 150' OF 1.75" D.J. HOSE



ALUMINUM BODY

SIDE ROLL PROTECTION

NOTE
DIMENSIONS SHOWN ARE APPROXIMATE AND ARE SUBJECT TO MINOR DEVIATIONS AS MAY OCCUR OR BE NECESSARY IN CONSTRUCTION. MINOR DETAILS NOT SHOWN.

1. AIR OUTLET WITH SHUT-OFF VALVE LOCATED DS PUMP PANEL
2. ALUMINUM 4-WAY ON CAB ROOF
3. BATTERY CHARGER LOCATED IN COMPARTMENT D3
4. BATTERY CHARGE INDICATOR LOCATED ON DRIVER'S SEAT REAR
5. SUB-FEED CIRCUIT BREAKER PANEL IN COMPARTMENT D3
6. ONE FULL WIDTH/DEPTH ADJUSTABLE SHELVES LOCATED IN COMPARTMENT D3, P1, R1 TWO IN D1 & P3
7. ONE ADJUSTABLE SLIDE-OUT TRAY IN COMPARTMENT TBD
8. ONE FLOOR MOUNTED SLIDE-OUT TRAY WITH 2.00" SIDES IN COMPARTMENT D1, P1, P3, & R1
9. ONE SWING-OUT ALUMINUM TOOL BOARD IN COMPARTMENT P2
10. 2100 AIR BOTTLE HOLDER WITH STRAP MOUNTED ON ADJUSTABLE TRACKS IN COMPARTMENT D2
11. CIRCUIT BREAKER PANEL IN COMPARTMENT D3

CUSTOMER APPROVAL

APPROVED BY:	
DATE:	
CHASSIS DATA	TITLE
MAKE	FOR
PIERCE	DWG NO.
MODEL	
ENFORCER	

		JOB NO.	32378
		SCALE	DATE
TITLE	1500-D-750P 177" PUC PUMPER BODY, (3)XLAYS LADDERS BETWEEN TANK AND S/SHT, DELUGE, GENERATOR	DRAWN BY	MMF 12APR18
FOR	MCLANE BLACK LAKE FIRE DEPARTMENT OLYMPIA, WASHINGTON	CHECKED BY	CCA 17APR18
DWG NO.	32378AD	SHEET SIZE	SHEET NO.
		D	1 OF 1