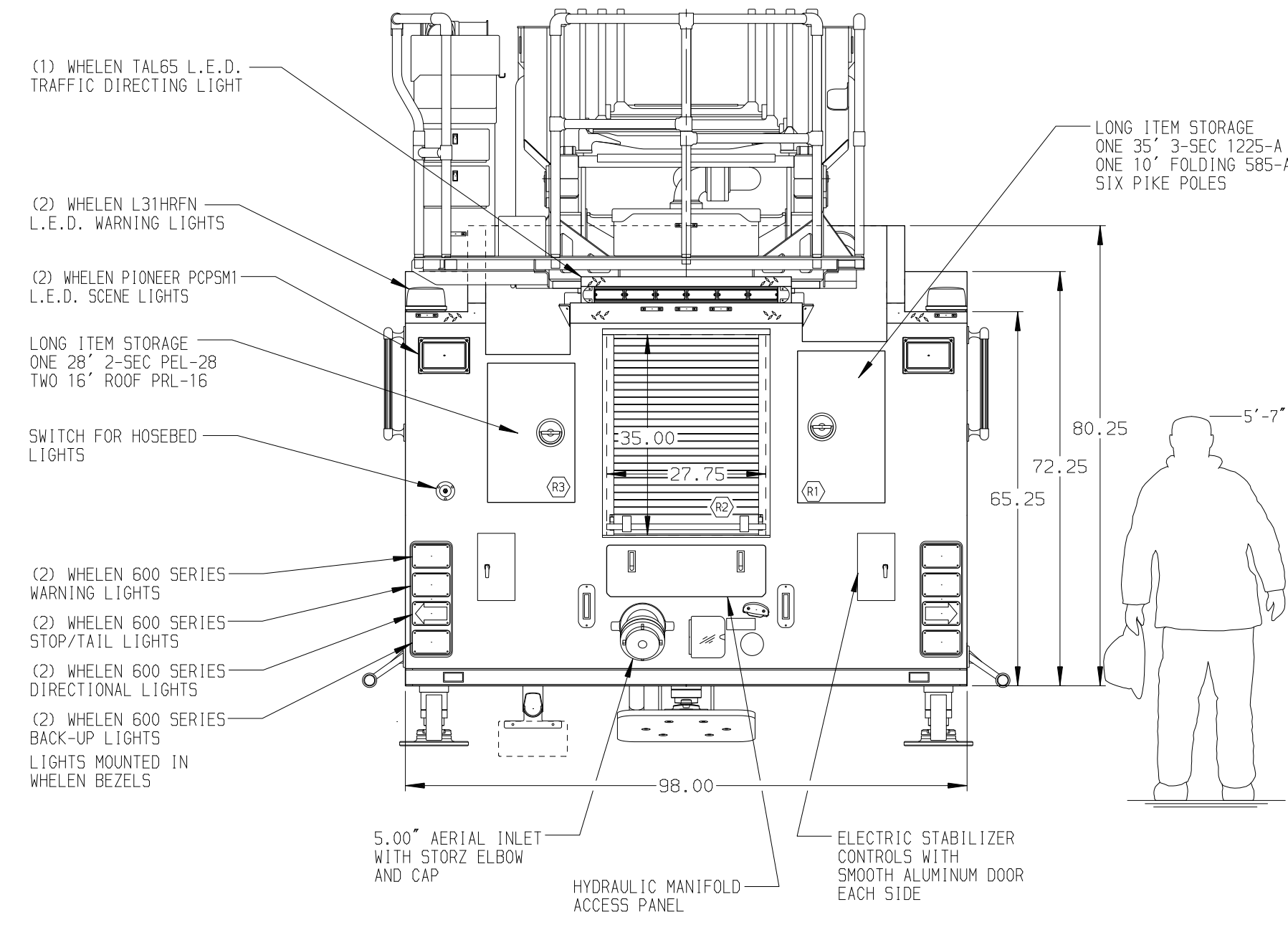
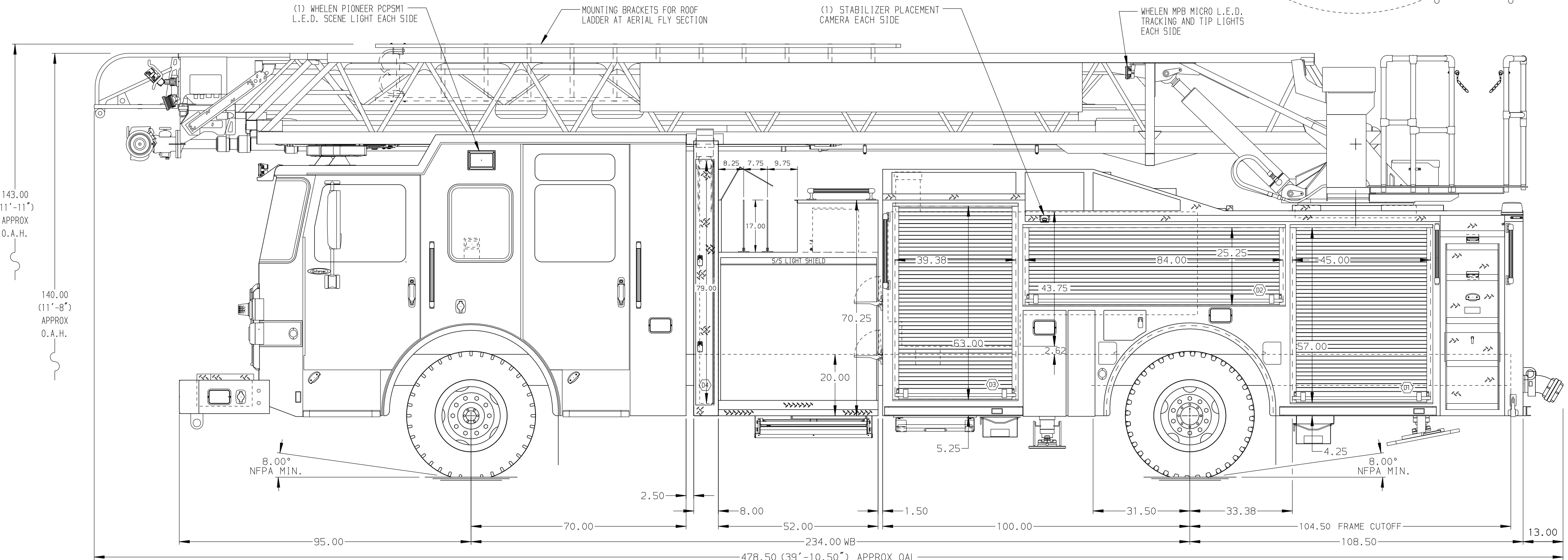


<p><b>BODY</b></p> <p>107' ASL Aluminum Body</p> <p>COMPT, DRIVER SIDE FRONT Full Height RollUp Forward</p> <p>COMPT, DRIVER SIDE REAR Full Height RollUp Rearward</p> <p>COMPT, PASSENGER SIDE FRONT Full Height RollUp Forward</p> <p>COMPT, PASSENGER SIDE REAR Full Height RollUp Rearward</p>	<p><b>WATER TANK</b></p> <p>500 Gallon Poly Water Tank</p> <p>Foam System</p> <p>Foam System Not Required</p> <p>Foam Cell</p> <p>Foam Cell Not Required</p>
--	--



<p><b>CHASSIS</b> Enforcer Chassis <b>ENGINE</b> 450 HP Cummins L9 Engine</p>	<p><b>CAB</b> 7010 Enforcer Cab, Notched <b>BUMPER</b> 26" Painted Underslung</p>	<p><b>AXLE, FRONT, CUSTOM</b> 22,800 Lb Dana Axle <b>AXLE, REAR</b> 33,500 Lb Meritor Axle</p>	<p><b>TRANSMISSION</b> Allison 5th Gen, 3000 EV5 P</p>	<p><b>PUMPHOUSE</b> 52" Control Zone Side Mount <b>PUMP</b> 1500 GPM Waterous CSU</p>	<p><b>CROSSLAYS, 1.50"</b> (2) 1.50" Standard Capacity <b>CROSSLAYS, 2.50"</b> (1) 2.50" Standard Capacity</p>	<p><b>SPEEDLAYS</b> Speedlays Not Required <b>GENERATOR</b> Harrison 6Kw MSV Hydraulic</p>	<p><b>CUSTOMER APPROVAL</b> APPROVED BY: _____ DATE: _____</p>	<p><b>Pierce MANUFACTURING INC.</b></p>	<p>JOB NO. 32415 SCALE 1:24 DATE _____</p>	
<p><b>NOTE</b> DIMENSIONS SHOWN ARE APPROXIMATE AND ARE SUBJECT TO MINOR DEVIATIONS AS MAY OCCUR OR BE NECESSARY IN CONSTRUCTION. MINOR DETAILS NOT SHOWN.</p>		<p>1. SHORELINE RECEPTACLE WITH KUSSMAUL SUPER AUTO-EJECT LOCATED ON THE DRIVER'S SIDE OF THE FRONT BUMPER 2. AIR INLET/OUTLET WITH DISCONNECT COUPLING LOCATED ON THE DRIVER SIDE PUMP PANEL 3. BATTERY CHARGER LOCATED BEHIND DRIVER'S SEAT 4. BATTERY CHARGE INDICATOR DISPLAYED THROUGH WINDOW BEHIND THE DRIVER'S SEAT 5. EIGHT ADJUSTABLE SHELVES IN COMPARTMENTS PER SHOP ORDER 6. FOUR FLOOR MOUNTED SLIDE-OUT TRAYS IN COMPARTMENTS PER SHOP ORDER 7. CIRCUIT BREAKER PANEL IN COMPARTMENT PER SHOP ORDER 8. ONE 120V RECEPTACLE IN COMPARTMENT PER SHOP ORDER 9. NON-RAISED AERIAL PEDESTAL</p>		<p>10. 1500 GPM HIGH FLOW WATERWAY 11. REMOTE LADDER CONTROLS AT AERIAL TIP 12. 120V POWER TO AERIAL TIP</p>		<p>CHASSIS DATA MAKE PIERCE MODEL ENFORCER</p>		<p>TITLE 107' ASCENDANT AERIAL LADDER AND BODY ASSEMBLY FOR BLUFFTON TOWNSHIP FIRE DISTRICT BLUFFTON, SOUTH CAROLINA DWG NO. 32415AD</p>		<p>DRAWN BY TKA CHECKED BY GRM SHEET SIZE D DATE 02MAY18 04MAY18 SHEET NO. 1 OF 1</p>