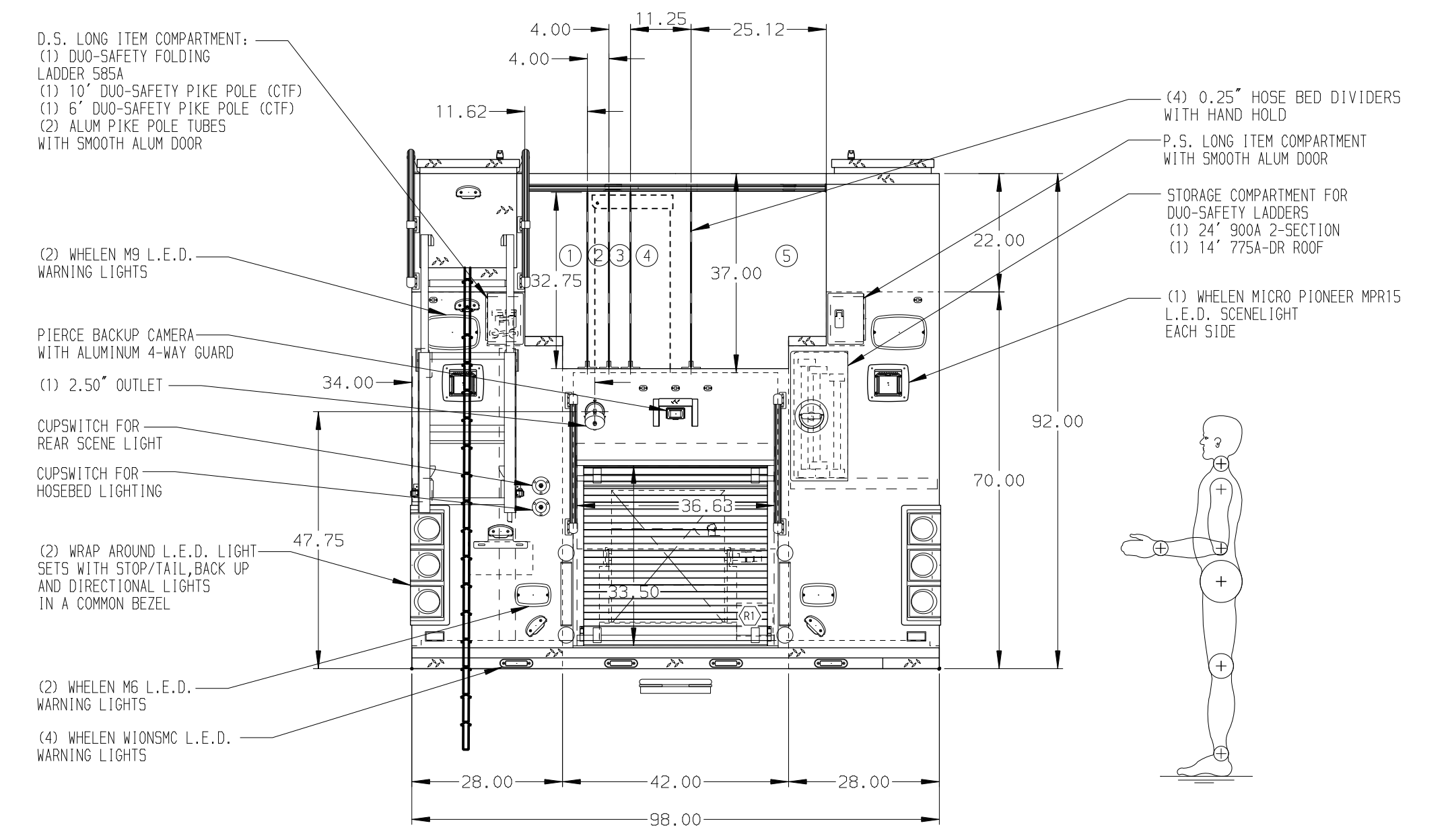
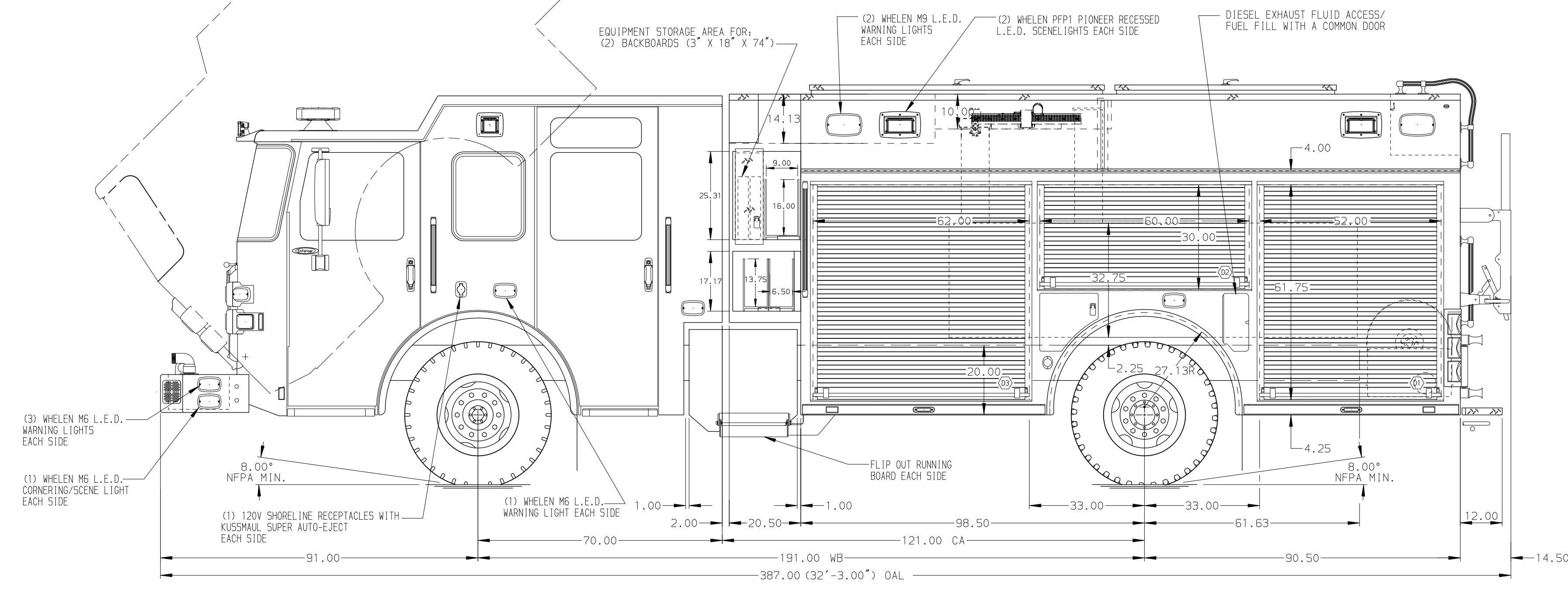


- HOSEBED CAPACITIES**
- ① 400' OF 2.50" HOSE
  - ② 200' OF 1.75" HOSE
  - ③ 200' OF 1.75" HOSE
  - ④ 600' OF 3.00" HOSE
  - ⑤ 1000' OF 5.00" HOSE



**ALUMINUM BODY**

**NOTE**  
DIMENSIONS SHOWN ARE APPROXIMATE AND ARE SUBJECT TO MINOR DEVIATIONS AS MAY OCCUR OR BE NECESSARY IN CONSTRUCTION. MINOR DETAILS NOT SHOWN.

1. WHEEL CHOCKS AND MOUNTING BRACKETS (DTF)
2. AIR INLET/OUTLET WITH DISCONNECT FITTING ON PUMP PANEL
3. BATTERY CHARGER LOCATED BEHIND DRIVER'S SEAT
4. BATTERY CHARGER INDICATOR LOCATED ON DRIVER'S SEAT RISER
5. JUMPER STUDS AT DRIVER SIDE CAB STEP
6. DUAL L.E.D. LIGHT STRIPS LOCATED IN HOSE BED
7. STAINLESS STEEL SCUFFPLATE ON BODY REAR CORNERS
8. ONE ADJUSTABLE FULL WIDTH/DEPTH SHELF IN COMPARTMENT 2
9. ONE FLOOR MOUNTED SLIDE-OUT TRAY IN D1, R1, AND P1
10. ONE SWING-OUT ALUMINUM TOOL BOARD IN D2
11. STORAGE RACK FOR 6 AIR BOTTLES IN P3
12. ONE HANNAY BOOSTER REEL MODEL 28-25-26 WITH CAPACITY FOR 200' OF 1.00\"/>

CUSTOMER APPROVAL			
APPROVED BY:			
DATE:			
REV	DATE	BY	CH
	04MAY18	LST	AZA

		JOB NO.	32420
		SCALE	1:24
CHASSIS DATA MAKE PIERCE MODEL ENFORCER	TITLE	1500-D-530P, 500 GAL OF WATER W/ 30 GAL FOAM CELL	
	FOR	189" PUC RESCUE, LADDERS THRU BODY, (3) X-LAYS	
	DWG NO.	32420AD	
	CHECKED BY	AZA	25APR18
	SHEET SIZE	D	SHEET NO. 1 OF 1