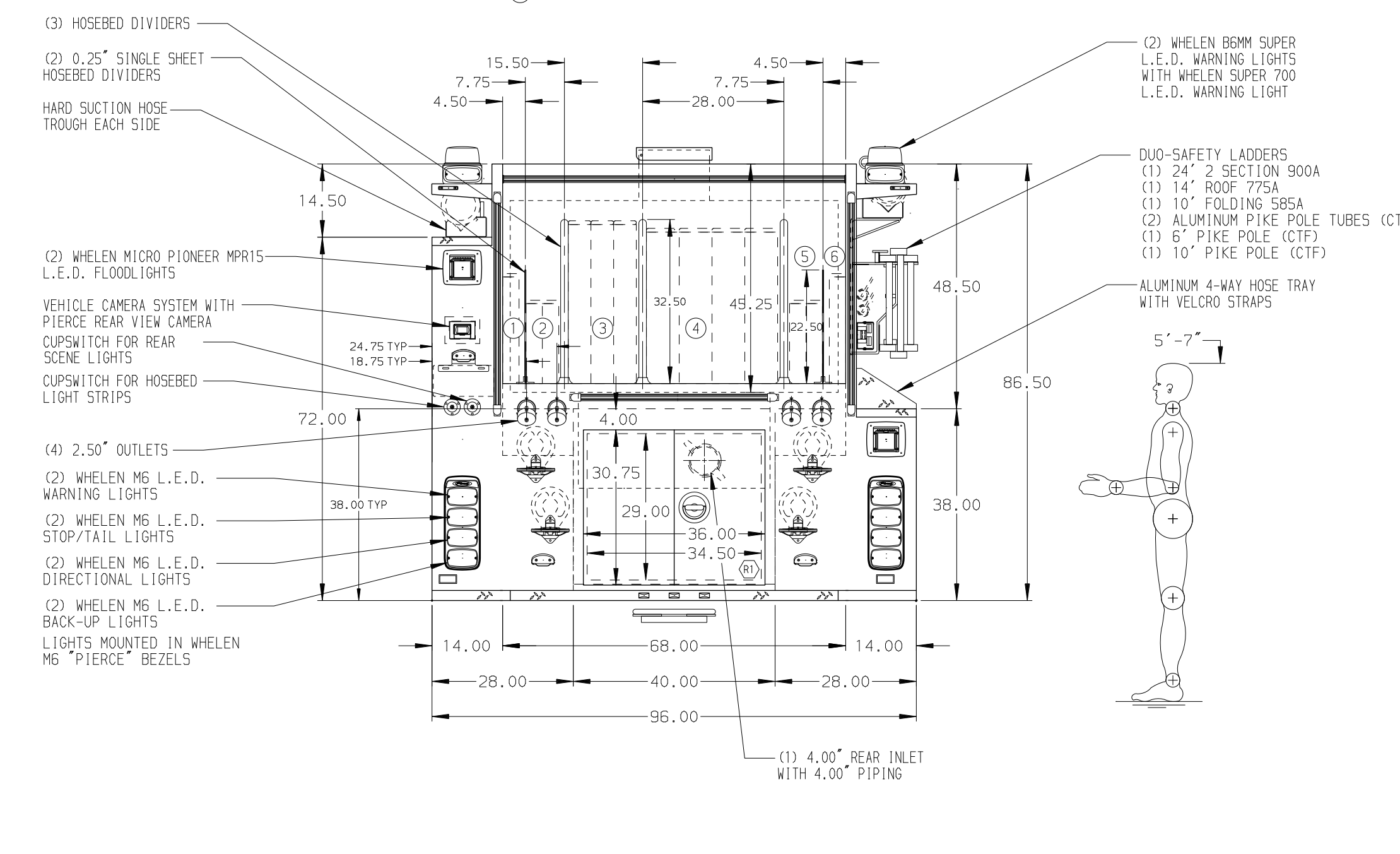


HOSEBED CAPACITIES

- ① 200' OF 1.75" D.J. POLY HOSE (SINGLE STACK)
- ② 300' OF 1.75" D.J. POLY HOSE (DOUBLE STACK)
- ③ 800' OF 2.50" D.J. POLY HOSE
- ④ 1000' OF 4.00" D.J. POLY HOSE
- ⑤ 300' OF 1.75" D.J. POLY HOSE (DOUBLE STACK)
- ⑥ 200' OF 1.75" D.J. POLY HOSE (SINGLE STACK)



ALUMINUM BODY

MAXIMUM O.A.L. 367.00"

MAXIMUM O.A.H. 114.00"

**NOTE**  
 DIMENSIONS SHOWN ARE APPROXIMATE AND ARE SUBJECT TO MINOR DEVIATIONS AS MAY OCCUR OR BE NECESSARY IN CONSTRUCTION.

- BATTERY CHARGER LOCATED BEHIND DRIVER'S SEAT
- BATTERY CHARGER INDICATOR LOCATED AT DRIVER'S SIDE PUMP PANEL
- DUAL L.E.D. LIGHT STRIPS LOCATED IN HOSE BED
- S/SIL SCUFFPLATE AROUND FUEL FILL OPENING
- REVERSED HINGED DOOR ON COMPARTMENTS D3 & P2
- ONE VERTICAL DIVIDER IN COMPARTMENT PER ORDER
- PARTITION BETWEEN COMPARTMENTS P1/P2
- ONE FULL DEPTH/FULL WIDTH ADJUSTABLE SHELF IN COMPARTMENTS D1 & D2
- ONE DEPLEX RECEPTACLE BEHIND THE OFFICERS SEAT
- ONE SMOOTH ALUMINUM TOOL BOARD WITH TRACKS IN COMPARTMENTS D1 & D3

REV	DATE	BY	CH	ARROW	XT	CHASSIS DATA	TITLE
▽	30OCT18	AMI	CSH			PIERCE	1500-D-750 GAL POLY, 140" D.S. FH, P.S. LOW FDLER 1 DEADLAY, DELUGE, LADDERS ON PS SIDE SHEET
▽	05SEP18	VAJ	CSH			PIERCE	CHRISTIANA FIRE COMPANY CHRISTIANA, DELAWARE
▽	03AUG18	CUP	LAB			PIERCE	
▽	07JUN18	CUP	CDU			PIERCE	

**Pierce** MANUFACTURING INC.

JOB NO. 32447

SCALE 1:24 DATE

DRAWN BY CUP 18MAY18

CHECKED BY CDU 25MAY18

SHEET SIZE D SHEET NO. 1 OF 1

DWG NO. **32447AD**