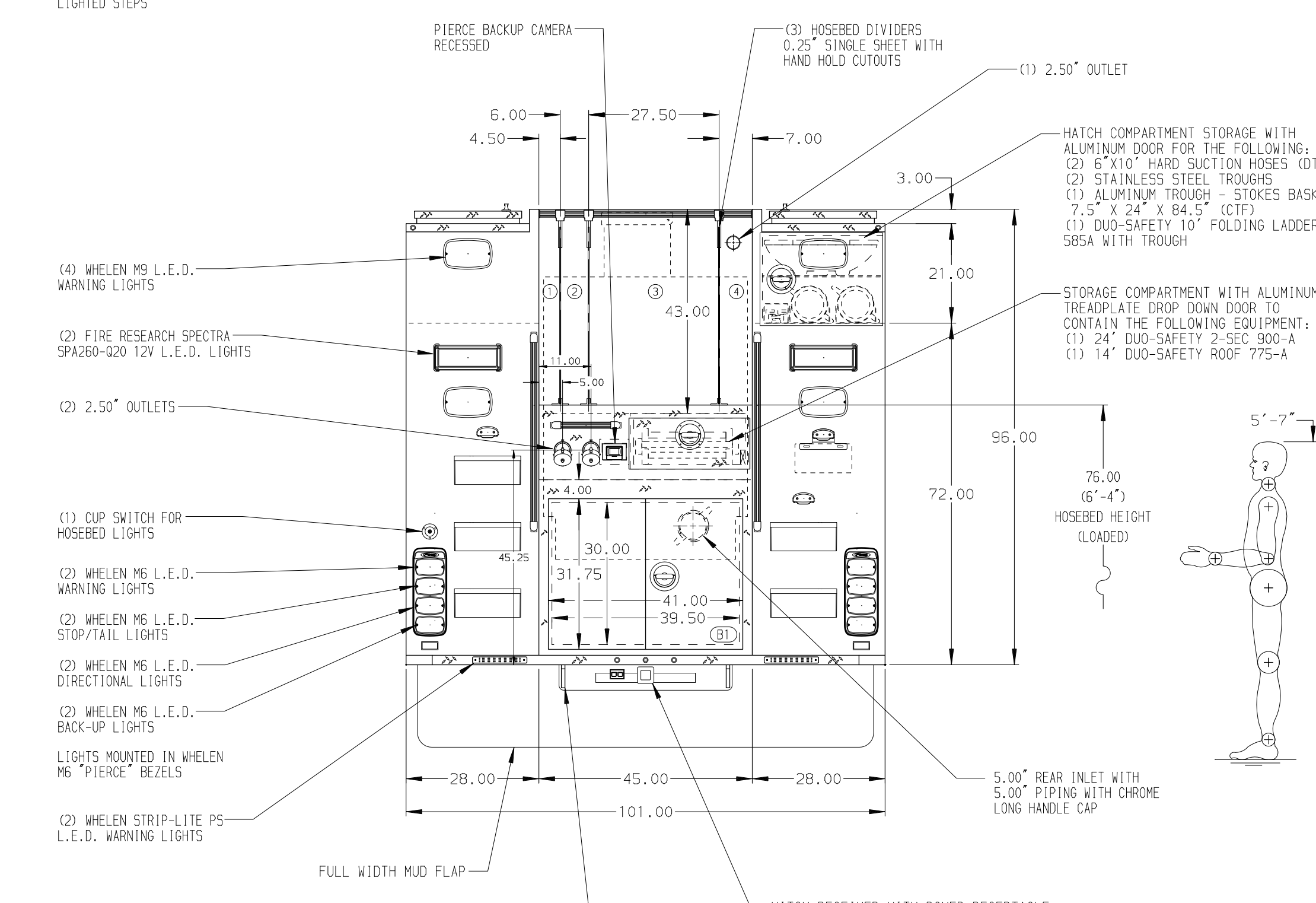


- HOSEBED CAPACITIES
- ① 300' OF 1.75" MERCEDES AQUAFLOW
  - ② 300' OF 2.50" KEY TRU ID
  - ③ 1200' OF 5.00" MERCEDES MEGAFLOW
  - ④ 400' OF 3.00" MERCEDES AQUAFLOW



ALUMINUM BODY      MAXIMUM O.A.L. 409.00"      MAXIMUM O.A.H. 120.00"      SIDE ROLL AND FRONTAL IMPACT PROTECTION

**NOTE**  
DIMENSIONS SHOWN ARE APPROXIMATE AND ARE SUBJECT TO MINOR DEVIATIONS AS MAY OCCUR OR BE NECESSARY IN CONSTRUCTION. MINOR DETAILS NOT SHOWN.

1. ONSPO AUTOMATIC TIRE CHAINS TO BE PROVIDED AT REAR
2. ONE 3000# WARY PORTABLE RECEIVER TYPE WINCH
3. KUSSMAUL BATTERY CHARGER LOCATED BEHIND DRIVER'S SEAT
4. BATTERY CHARGE INDICATOR LOCATED ON DRIVER'S SEAT RISER
5. DUAL L.E.D. LIGHT STRIPS LOCATED IN HOSE BED
6. STAINLESS STEEL SCUFFPLATES ON BEVERTAILS, REAR EDGE OF HOSEBED AND REAR OUTBOARD BODY CORNERS
7. STAINLESS STEEL SCUFFPLATE ON BOTTOM EDGE OF DOOR FRAMING OF COMPARTMENTS L51, L52, L53, R51, R52, R53 AND HARD SUCTION HOSE STORAGE COMPARTMENT
8. STAINLESS STEEL SCUFFPLATES AT EACH CAB DOOR JAMB, ON REAR CAB CORNERS AND ON CREW CAB STORAGE COMPARTMENT DOORS (FOR PIKE POLES)
9. THREE 15/20A DUPLEX RECEPTACLES - ONE IN CAB AND TWO IN OVERHEAD CREW CAB COMPARTMENT
10. ALUMINUM TREADPLATE SCUFFPLATE ON EACH REAR FENDER PANEL

REV	DATE	BY	CH	ENFORCER
06SEP18	JRO	DTS		PIERCE
27JUL18	JRO	CSH		MODEL

		JOB NO.	32515
		SCALE	DATE
TITLE	1500-D-750, 184" HDRP BODY, LADDER TUNNEL THRU TANK CROSSLAYS, DELUGE, BOOSTER/CORD/HYDRAULIC REELS		
FOR	HAMPDEN TOWNSHIP VOLUNTEER FIRE COMPANY MECHANICSBURG, PENNSYLVANIA		
DWG NO.	32515AD-SH1		
CHECKED BY	NPA	DRAWN BY	JRO
SHEET SIZE	D	CHECKED BY	NPA
SHEET NO.	1 OF 1	DRAWN BY	JRO
		CHECKED BY	NPA