

SURFACE DESIGNATION AND PATHWAY MARKINGS

- HOSEBED CAPACITIES
- ① 300' OF 3.00" D.J. POLY HOSE
 - ② 500' OF 3.00" D.J. POLY HOSE
 - ③ 1200' OF 4.00" NITRILE RUBBER HOSE
 - ④ 300' OF 2.50" D.J. POLY HOSE

(1) HOSEBED DIVIDER W/ HANDHOLD CUTOUT

(2) HOSEBED DIVIDERS

(2) WHELEN L31HRFN L.E.D. WARNING LIGHTS

(1) WHELEN PIONEER PCPSM1 L.E.D. SPOT/FLOOD LIGHT MOUNTED IN PAINTED BOX EACH SIDE

(1) 6.00" X 10" HARD SUCTION HOSE IN PAINTED CAPPED TROUGH (SIF)

(2) WHELEN PIONEER PCPSM1 L.E.D. SCENE LIGHTS

S/S CUPSWITCH FOR HOSEBED LIGHTING

(2) WHELEN M6 L.E.D. WARNING LIGHTS

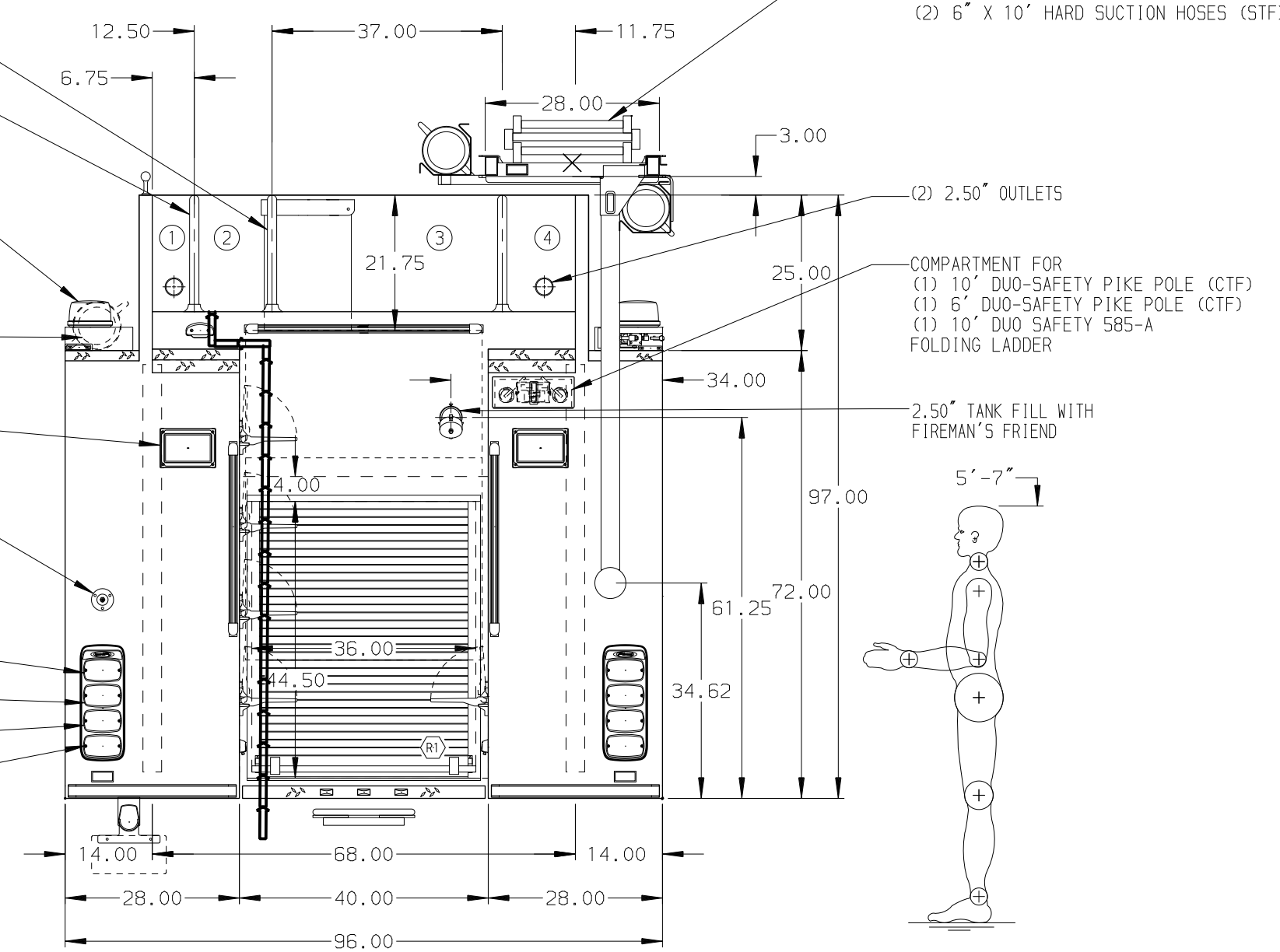
(2) WHELEN M6 L.E.D. STOP/TAIL LIGHTS

(2) WHELEN M6 L.E.D. DIRECTIONAL LIGHTS

(2) WHELEN M6 L.E.D. BACK-UP LIGHTS

LIGHTS MOUNTED IN WHELEN M6 "PIERCE" BEZELS

- HYDRAULIC LADDER RACK TO CONTAIN THE FOLLOWING EQUIPMENT:
- (1) 24" DUO- SAFETY 2-SEC 900-A
 - (1) 14" DUO- SAFETY ROOF 775-A
 - (1) 10" DUO SAFETY 585-A FOLDING LADDER



STAINLESS STEEL BODY

SIDE ROLL AND FRONTAL IMPACT PROTECTION

NOTE
DIMENSIONS SHOWN ARE APPROXIMATE AND ARE SUBJECT TO MINOR DEVIATIONS AS MAY OCCUR OR BE NECESSARY IN CONSTRUCTION.
MINOR DETAILS NOT SHOWN.

- 1. AIR INLET WITH KUSSMAUL AIR-EJECT ON D.S. PUMP PANEL
- 2. BATTERY CHARGER LOCATED BEHIND DRIVER'S SEAT
- 3. BATTERY CHARGER INDICATOR BEHIND DRIVER'S SEAT DISPLAYED THROUGH WINDOW
- 4. DUAL L.E.D. LIGHT STRIPS LOCATED IN HOSE BED
- 5. DRIP PAN GUARD FOR ROLL-UP DOOR R1
- 6. ADJUSTABLE FULL WIDTH/DEPTH SHELVES TWO IN D3 AND P3 AND ONE IN D1, R1, AND P2
- 7. ADJUSTABLE TILTING SLIDE-OUT TRAYS TWO IN D3 AND P3 AND ONE IN D1, R1, AND P2
- 8. CABLE RELEASE LATCH WITH SINGLE HAND OPERATION FOR TRAYS IN D1, D3, AND P3
- 9. (1) LITTLE GIANT REVOLUTION XE 12017-MODEL 17 LADDER IN P1
- 10. ONE FLOOR MOUNTED SLIDE-OUT TRAY IN D1, D3, R1, P1, AND P3

- 11. SWING-OUT TOOL BOARD WITH PEGBOARD PATTERN IN D2
- 12. ONE VERTICAL PARTITION IN D1 AND P1
- 13. ALUMINUM PEGBOARD WITH TRACKS ON THE BACK WALL OF D2
- 14. MOUNTING RACK FOR 4 FIRE EXTINGUISHERS IN R1
- 15. CIRCUIT BREAKER PANEL IN P3
- 16. ONE HANNAVY ELECTRIC REWIND CORD REEL MODEL 1618-17-18 WITH 200' OF 12/3 CORD IN THE P.S. OF THE CARGO AREA
- 17. 120V NEMA DUPLEX RECEPTACLE TWO IN D3 AND P3 AND ONE BEHIND THE DRIVER'S SEAT AND IN D1, D2, P1, AND P2

				CHASSIS DATA
				MAKE
				MODEL
REV	DATE	BY	CH	VELOCITY FR

 MANUFACTURING INC.		JOB NO.	32526
		SCALE	DATE
		DRAWN BY	30MAY18
		CHECKED BY	31MAY18
		SHEET SIZE	SHEET NO.
		D	1 OF 1

TITLE 1500-D-1000 GAL POLY, 171" RESCUE BODY
HYDRAULIC LADDER RACK, (3) SPEEDLAYS, DELUGE
FOR ALLEGANY ENGINE COMPANY
ALLEGANY, NEW YORK
DWG NO. 32526AD