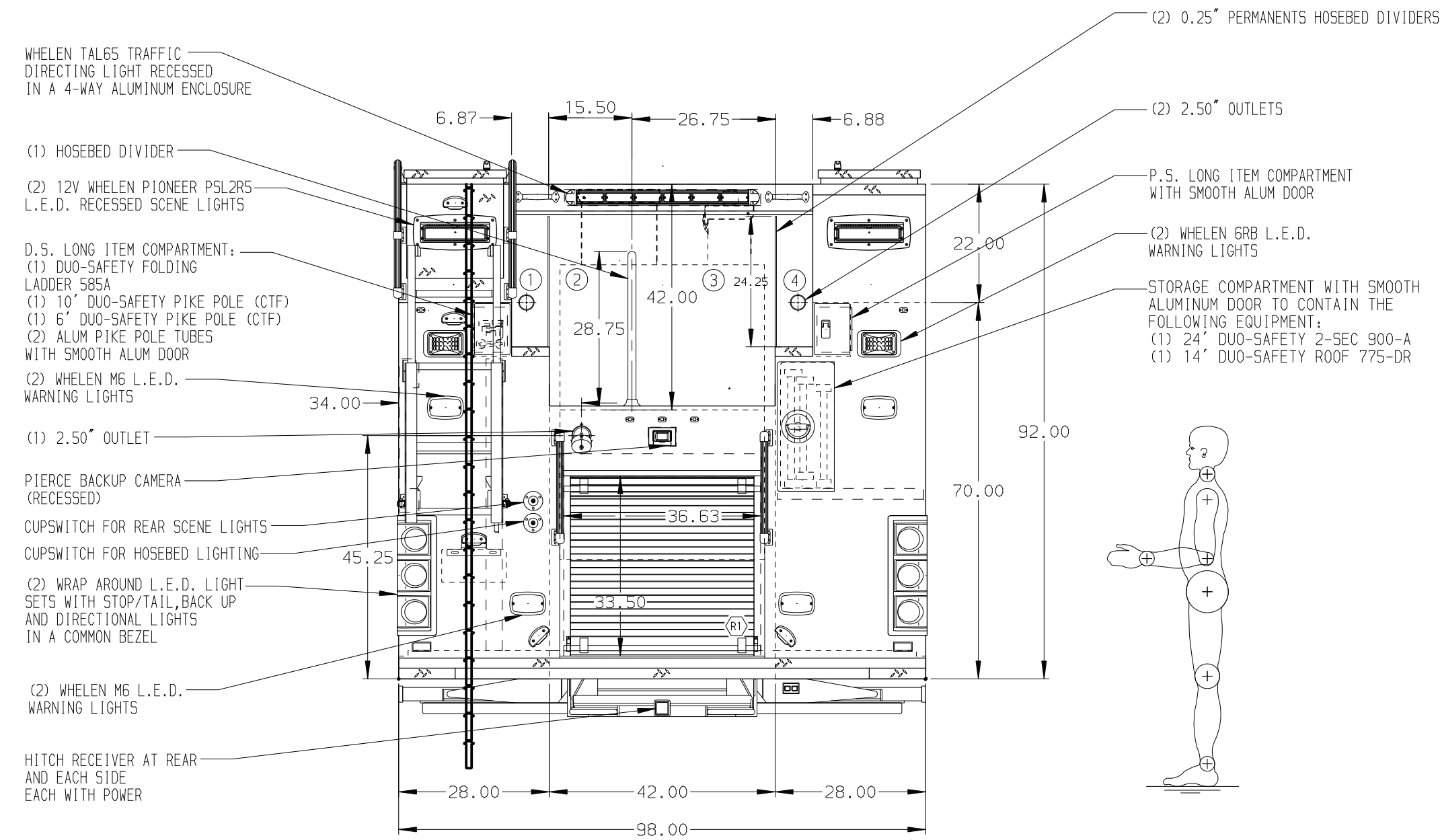


- HOSEBED CAPACITIES
- ① 250' OF 2.50" HOSE
 - ② 600' OF 3.00" HOSE
 - ③ 1000' OF 5.00" HOSE
 - ④ 250' OF 3.00" HOSE



ALUMINUM BODY

NOTE
DIMENSIONS SHOWN ARE APPROXIMATE AND ARE SUBJECT TO MINOR DEVIATIONS AS MAY OCCUR OR BE NECESSARY IN CONSTRUCTION.
MINOR DETAILS NOT SHOWN.

- ONSPOT AUTOMATIC TIRE CHAINS TO BE PROVIDED AT REAR
- AIR INLET WITH DISCONNECT COUPLING ON D.S. STEP WELL
- WHEEL CHOCKS AND MOUNTING BRACKETS (DTF)
- AIR OUTLET WITH SHUT OFF VALVE ON D.S. PUMP PANEL
- BATTERY CHARGER LOCATED BEHIND DRIVER'S SEAT
- BATTERY CHARGER INDICATOR LOCATED ON DRIVER'S SEAT RISER
- DUAL L.E.D. LIGHT STRIPS LOCATED IN HOSE BED
- ONE ADJUSTABLE FULL WIDTH/DEPTH IN COMPARTMENT 2
- ONE ADJUSTABLE SLIDE-OUT TRAY IN COMPARTMENT 2
- ONE FLOOR MOUNTED SLIDE-OUT TRAY IN D1, R1, AND P1
- SWING-OUT TOOL GRID SYSTEM IN D2
- CTECH DRAWER ASSEMBLY IN D3
- SLIDE OUT WORK SURFACE WITH TOOL STORAGE IN D3
- ONE VERTICAL PARTITION IN COMPARTMENT 2
- ZIAMATIC SCBA HOLDER BRACKET IN D3
- (3) ADDITIONAL POLY TRAYS SHIPPED LOOSE
- CIRCUIT BREAKER PANEL IN DRIVER SIDE FRONT BRASS COMPARTMENT
- ONE AKRON MODEL ERWC-15-10 WITH 200' OF 10/3 CABLE ELECTRIC REWIND CORD REEL WITH ALUMINUM ENCLOSURE ON THE P.S. OVER THE PUMP
- ONE 6-PLACE RECEPTACLE STRIP LOCATED 2

CUSTOMER APPROVAL

APPROVED BY: _____
DATE: _____

REV	DATE	BY	CH	ENFORCER



MANUFACTURING INC.

TITLE 1500-D-530P, 500 GAL OF WATER W/ 30 GAL FOAM CELL
189" PUC RESCUE, LADDERS THRU BODY, (3) X-LAYS,
FOR CITY OF SANDY SPRINGS
SANDY SPRINGS, GEORGIA
DWG NO. 32579AD

JOB NO.	32579
SCALE	1:24
DATE	DATE
DRAWN BY	LST
CHECKED BY	AZA
SHEET SIZE	D
SHEET NO.	1 OF 1