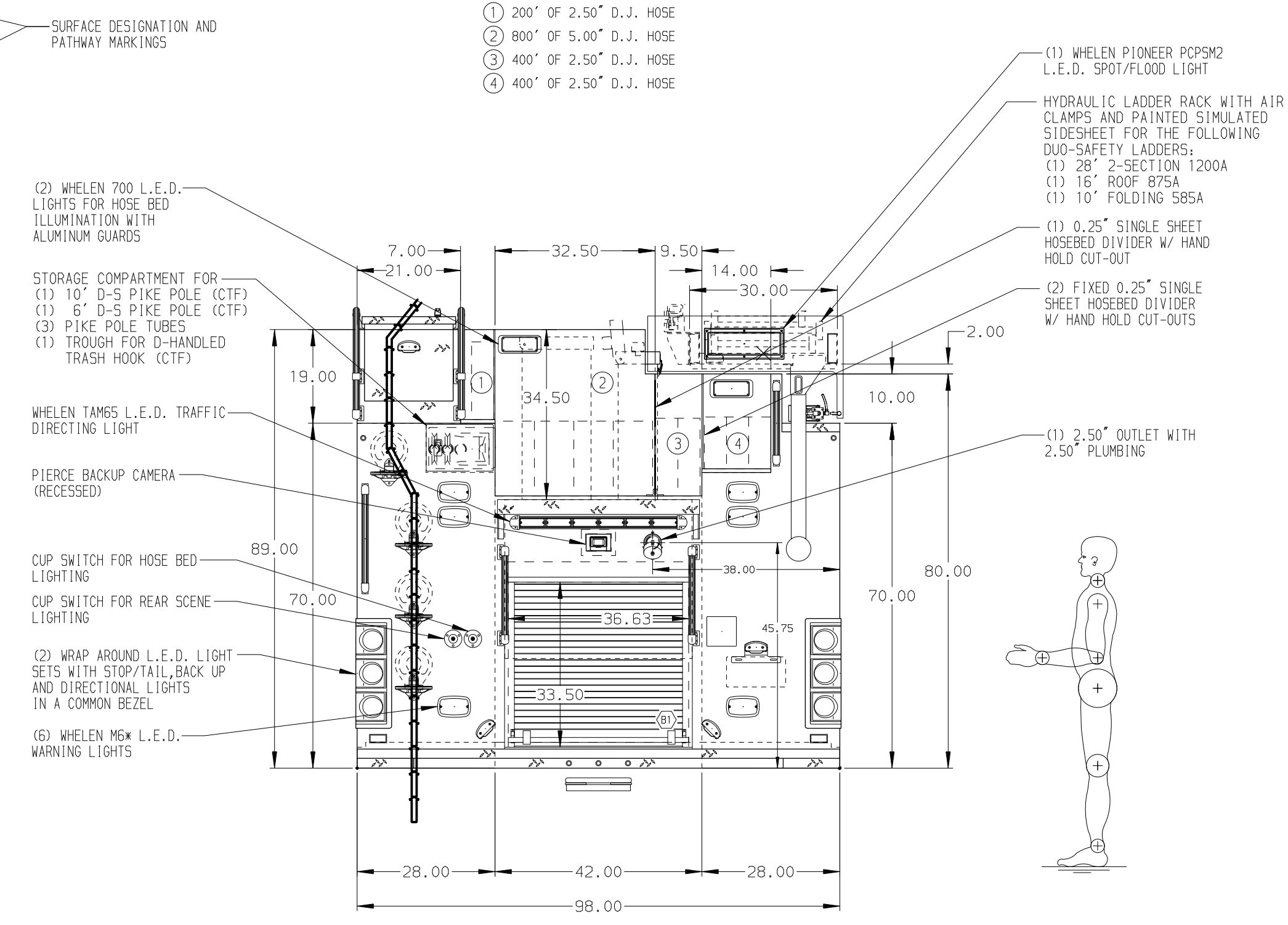


HOSEBED CAPACITIES

- ① 200' OF 2.50" D.J. HOSE
- ② 800' OF 5.00" D.J. HOSE
- ③ 400' OF 2.50" D.J. HOSE
- ④ 400' OF 2.50" D.J. HOSE



ALUMINUM BODY

MAXIMUM O.A.H. 119.00"

SIDE ROLL AND FRONTAL IMPACT PROTECTION

NOTE
DIMENSIONS SHOWN ARE APPROXIMATE AND ARE SUBJECT TO MINOR DEVIATIONS AS MAY OCCUR OR BE NECESSARY IN CONSTRUCTION. MINOR DETAILS NOT SHOWN.

- BATTERY CHARGER LOCATED BEHIND DRIVER'S SEAT
- ONE FULL WIDTH/DEPTH SHELF IN COMPARTMENTS LS2 & RS3 - TWO IN RS1, RS3, LS1, & LS3
- ONE FLOOR MOUNTED SLIDE-OUT TRAY IN COMPARTMENT RS1
- ONE SWING-OUT ALUMINUM TOOL BOARD IN COMPARTMENT B1
- ALL BODY COMPARTMENTS WITH LOUVERS SHALL HAVE A REMOVABLE FILTER
- ALL FOLDING STEPS TO BE TRIDENT WITH INTEGRATED L.E.D. LIGHT UNLESS SPECIFIED
- AIR INLET WITH DISCONNECT COUPLING IN DRIVER'S STEP WELL
- ONE 15/20A 120V DUPLEX RECEPTACLE IN COMPARTMENTS RS1 & RS3
- ONE TILTING SLIDE-OUT TRAY IN COMPARTMENT RS2
- ONE VERTICAL DIVIDER IN COMPARTMENT RS1

11. ONE SLIDE-OUT TOOLBOARD WITH TRAY IN COMPARTMENT RS1

REV	DATE	BY	CH	VELOCITY FR
25SEP18		GVH	MSA	
30AUG18		GVH	EFA	

		JOB NO.	32660
		SCALE	(01-02)
Pierce MANUFACTURING INC.		TITLE	1500-D-520P, 500G WATER/20G FOAM, 189" RESCUE BODY (3) CROSSLAYS, DELUGE, HYDRAULIC LADDER RACK
		FOR	NORTH METRO FIRE RESCUE BROOMFIELD, COLORADO
		DWG NO.	32660AD
		CHECKED BY	AZA
		SHEET SIZE	D
		DATE	05JUL18
		SHEET NO.	1 OF 1