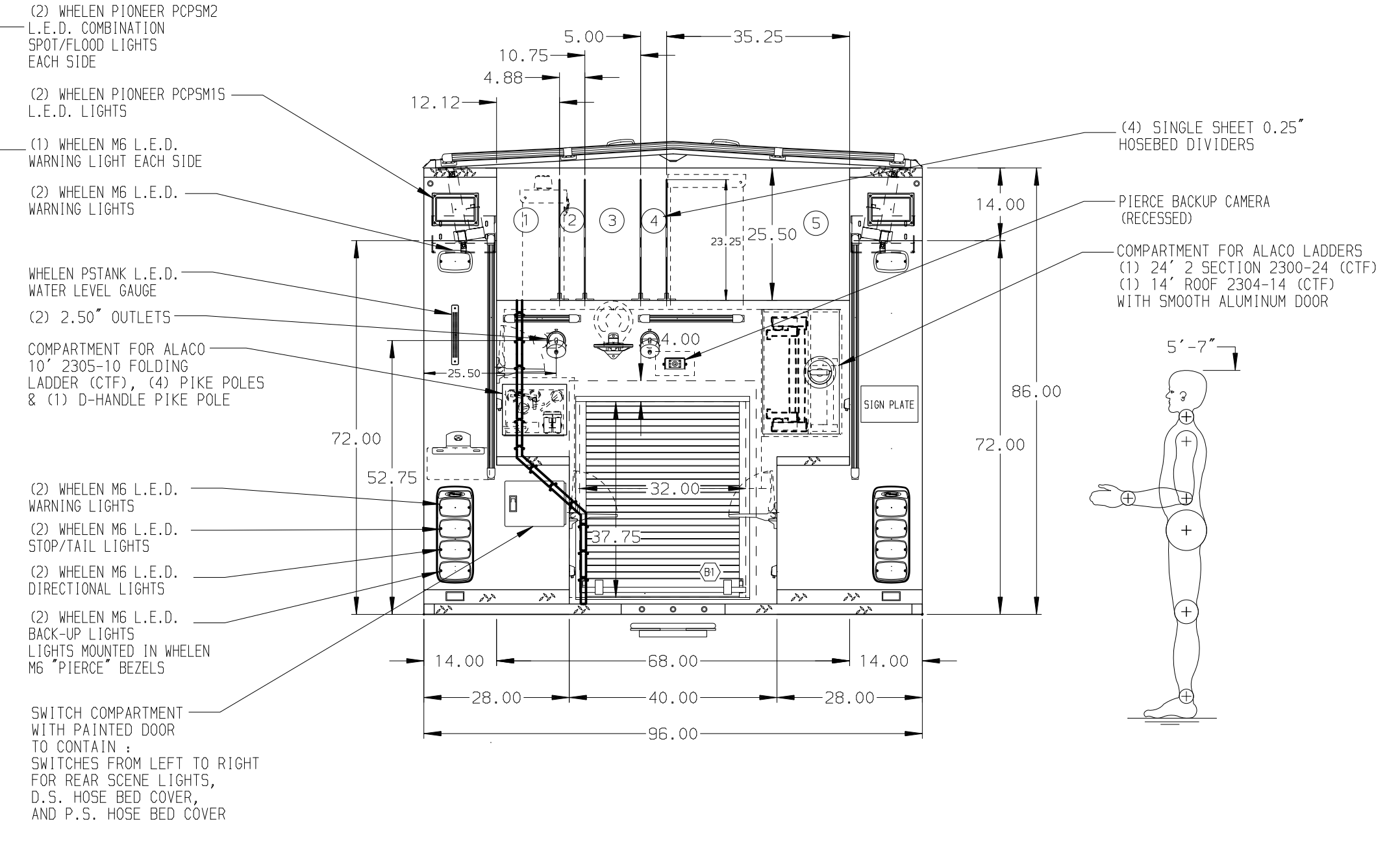
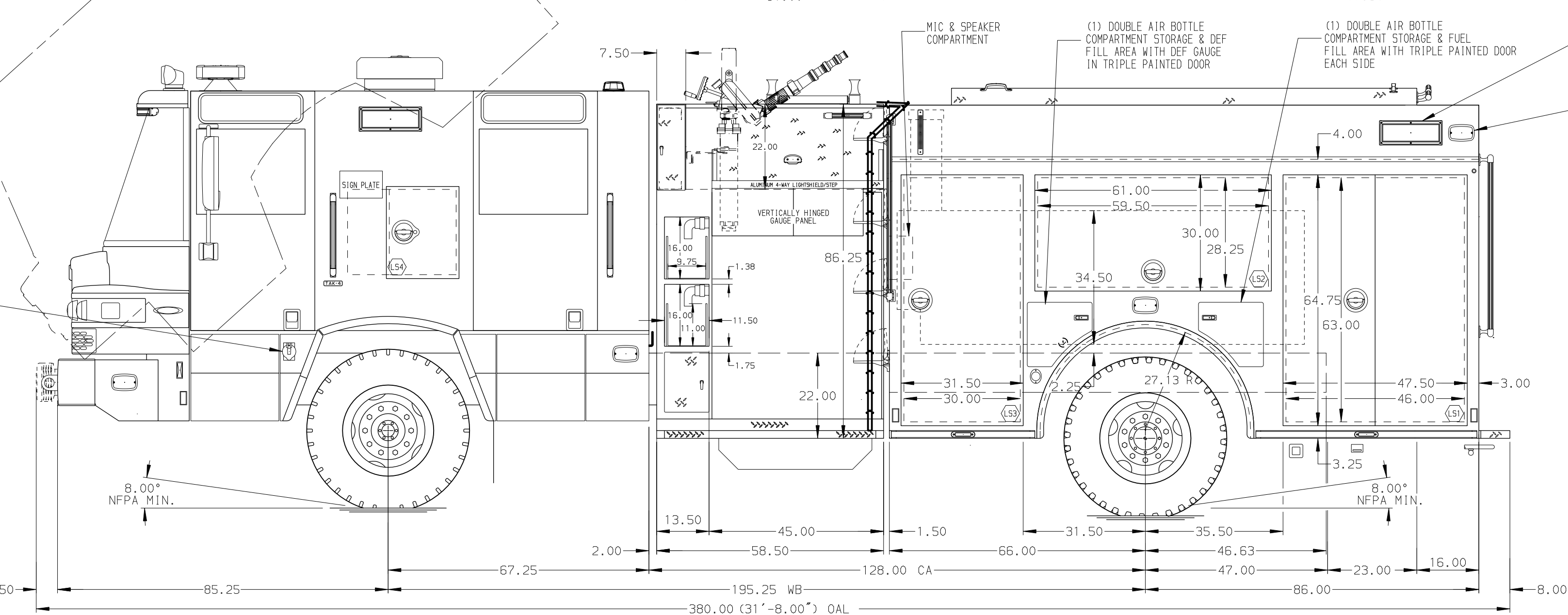


HOSEBED CAPACITIES

- 400' OF 3.00" D.J. POLY
- 300' OF 1.75" KEY HOSE
- 200' OF 2.50" KEY HOSE
- 300' OF 1.75" KEY HOSE
- 900' OF 5.00" D.J. POLY



GALVANNEAL

SIDE ROLL AND FRONTAL IMPACT PROTECTION

NOTE  
DIMENSIONS SHOWN ARE APPROXIMATE AND ARE SUBJECT TO MINOR DEVIATIONS AS MAY OCCUR OR BE NECESSARY IN CONSTRUCTION. MINOR DETAILS NOT SHOWN.

- ALUMINUM 4-WAY ON CAB ROOF
- BATTERY CHARGE INDICATOR LOCATED ON DRIVER'S SEAT RISER
- PULL STRAP ON DOOR IN COMPARTMENTS L52 & R52
- REVERSED HINGED DOOR ON COMPARTMENT L53
- 5/8" S/STL SCUFFPLATE ON BOTTOM EDGE OF DOOR FRAMING OF COMPARTMENTS L51, L52, L53, R51, R52 & R53
- DRIP PAN GUARD FOR ROLL-UP DOOR LOCATED IN COMPARTMENT B1
- ONE FULL WIDTH ADJUSTABLE SHELF LOCATED IN COMPARTMENT B1, TWO IN L51, R51 & R53
- ONE ADJUSTABLE SLIDE-OUT TRAY IN COMPARTMENT L51, R51 & R53
- ONE FLOOR MOUNTED SLIDE-OUT TRAY IN COMPARTMENT R51
- RESPONSE READY FOUR DRAWER CABINET IN COMPARTMENT L53
- PAC TRAC ON THE REAR WALL OF COMPARTMENT R52
- PARTITION BETWEEN COMPARTMENTS L51/B1 & R51/B1
- ONE VERTICAL PARTITION IN COMPARTMENT L51
- 4-WAY ALUMINUM ON THE FLOOR OF COMPARTMENT L51, L53, R53 & B1
- AIR BOTTLE HOLDER WITH TRACKS IN COMPARTMENT L52
- WHEEL CHOCK MOUNTING BRACKETS PROVIDED BY FIRE DEPARTMENT
- AIR INLET W/ DISCONNECT COUPLING LOCATED ON D.S. SEAT RISER
- AIR OUTLET W/ SHUT OFF VALVE LOCATED ON D.S. & P.S. PUMP PANELS
- BATTERY CHARGER LOCATED IN CREW CAB SEAT RISER
- ONE ADJUSTABLE FULL WIDTH/DEPTH SHELF IN L53

REV	DATE	BY	CH	QUANTUM
1	23JAN19	AMI	LPA	CHASSIS DATA
2	17DEC18	AMI	LPA	MAKE
3	06AUG18	AMI	SMA	PIERCE
4	31JUL18	AMI	SMA	MODEL

TITLE	FOR	DWG NO.
1500-D-500 W/30G FOAM, 152", FULL HEIGHT, FDLER (2) SPD-LAYS, DELUGE, HOSE REEL	FREMONT FIRE DEPARTMENT FREMONT, CALIFORNIA	32716AD

**Pierce MANUFACTURING INC.**

JOB NO. 32716 (01-02)

SCALE 1:24 DATE

DRAWN BY AMI 19JUL18

CHECKED BY SMA 20JUL18

SHEET SIZE D SHEET NO. 1 OF 1