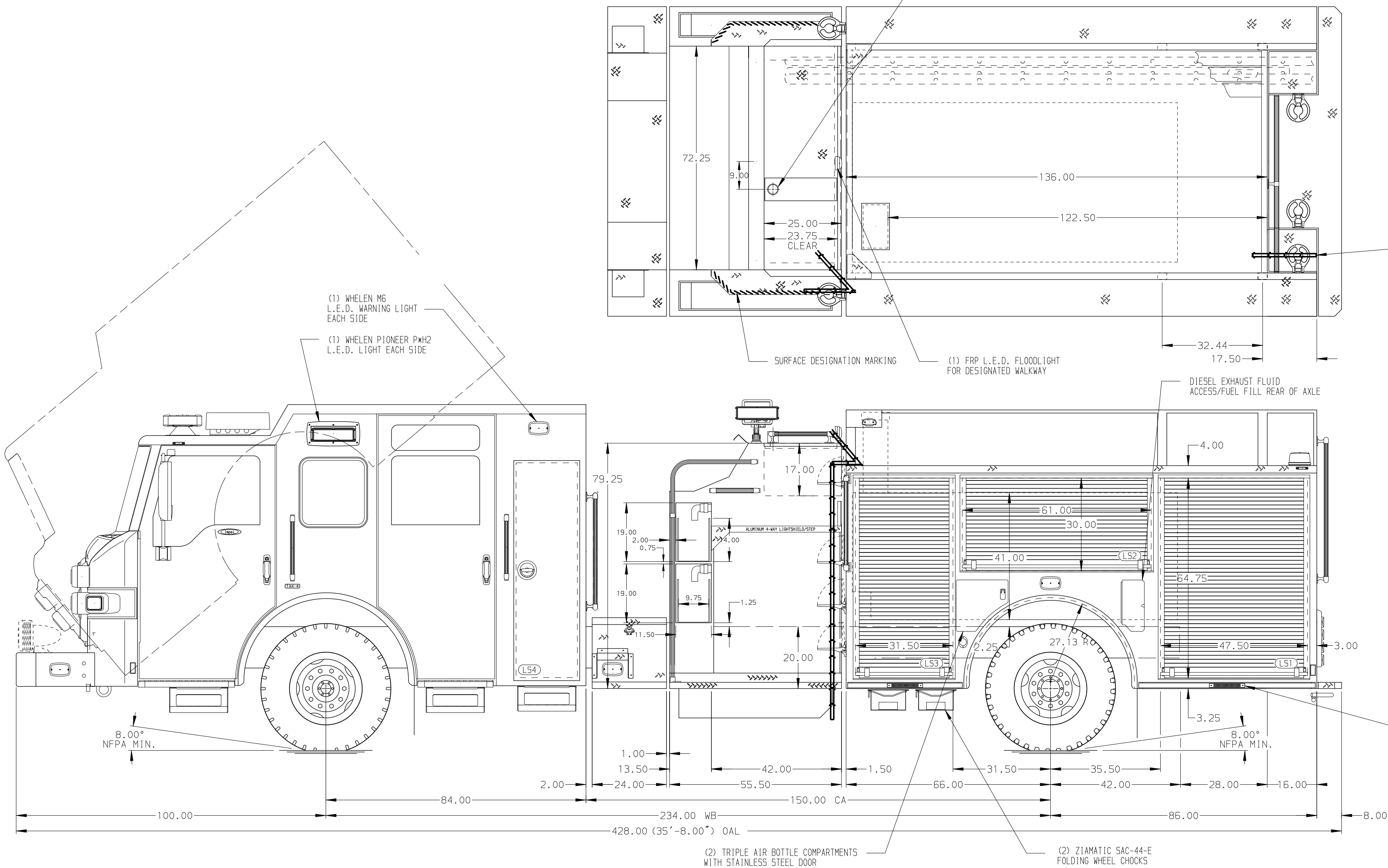


HOSEBED CAPACITIES

- ① - 800' OF 4.00" HOSE
- ② - 600' OF 3.00" HOSE
- ③ - 400' OF 2.50" HOSE



(2) WHELEN ROTA-BEAM R316WF L.E.D. BEACON LIGHTS

(2) WHELEN M9LZC L.E.D. SCENE LIGHTS

(2) WHELEN M6 L.E.D. WARNING LIGHTS

(1) CUP SWITCH FOR HOSEBED LIGHTS

(1) CUP SWITCH FOR REAR SCENE LIGHTS

(2) WHELEN M6 L.E.D. WARNING LIGHTS

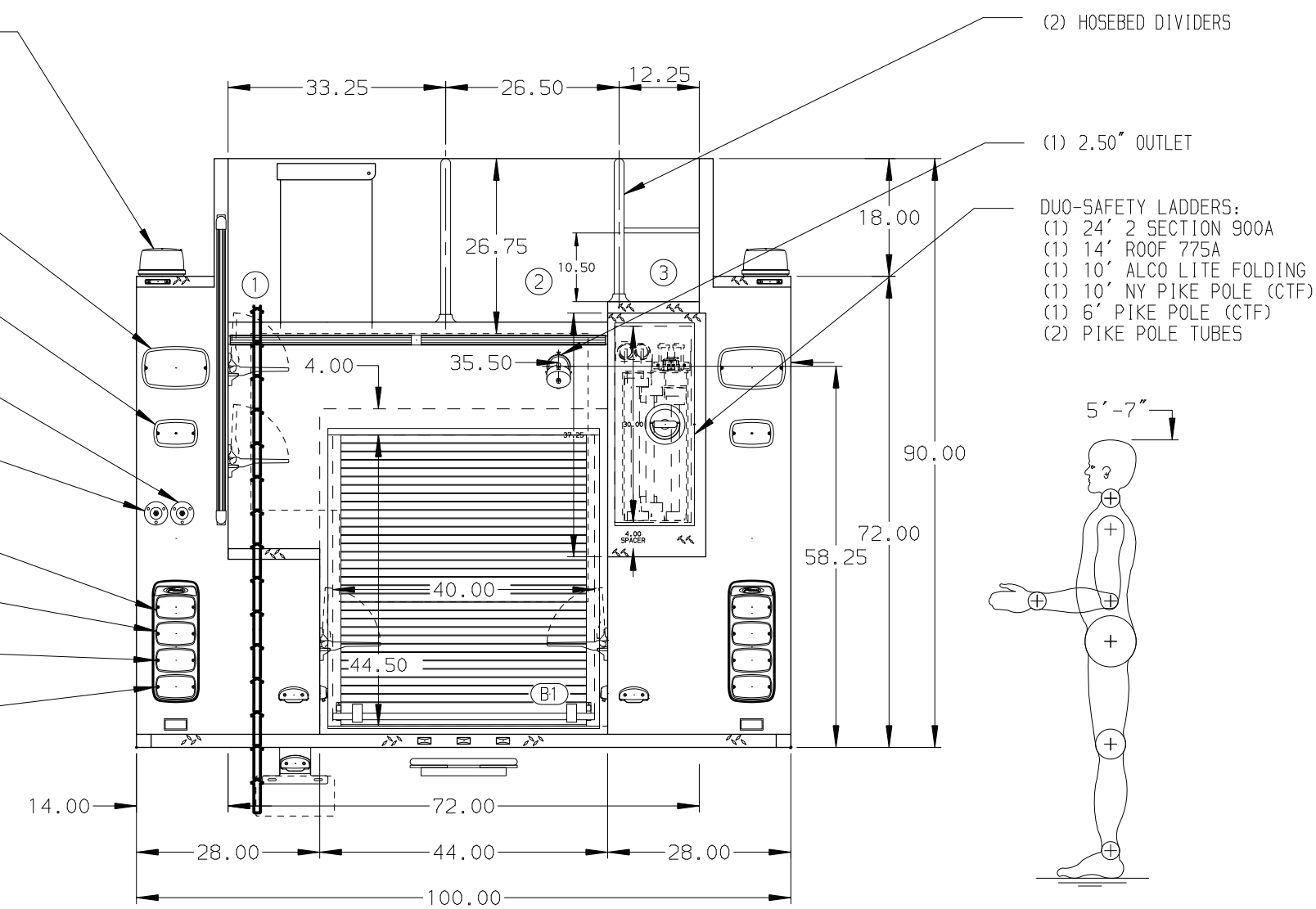
(2) WHELEN M6 L.E.D. STOP/TAIL LIGHTS

(2) WHELEN M6 L.E.D. DIRECTIONAL LIGHTS

(2) WHELEN M6 L.E.D. BACK-UP LIGHTS

LIGHTS MOUNTED IN WHELEN M6 "PIERCE" BEZELS

(2) WHELEN STRIP-LITE PS000FR L.E.D. LIGHTS EACH SIDE



## ALUMINUM BODY

## SIDE ROLL AND FRONTAL IMPACT PROTECTION

### NOTE

DIMENSIONS SHOWN ARE APPROXIMATE AND ARE SUBJECT TO MINOR DEVIATIONS AS MAY OCCUR OR BE NECESSARY IN CONSTRUCTION. MINOR DETAILS NOT SHOWN.

- BATTERY CHARGER LOCATED IN COMPARTMENT LS3
- BATTERY CHARGE INDICATOR LOCATED NEAR DRIVER'S SEAT RISER WITH BRACKET
- DUAL L.E.D. LIGHT STRIPS LOCATED IN HOSE BED
- 5/8" S/STL SCUFFPLATE AROUND FUEL FILL OPENING
- AIR INLET/OUTLET W/DISCONNECT FITTING LOCATED IN D5 STEP WELL FORWARD
- 120V SHORELINE RECEPTACLE LOCATED IN D5 STEP WELL
- PULL STRAP ON DOOR IN COMPARTMENT LS1, LS2, LS3, RS1, RS2, & RS3
- REVERSED HINGED DOOR ON COMPARTMENT LS4 & RS4
- ONE FULL WIDTH/DEPTH ADJUSTABLE SHELF LOCATED IN COMPARTMENT LS3, RS3, & B1 TWO IN LS1 & RS1
- DRIP PAN GUARD FOR ROLL-UP DOOR LOCATED ON ALL DOORS

- ONE FLOOR MOUNTED SLIDE-OUT TRAY IN COMPARTMENT LS1, RS, & B1
- ALUMINUM PEGBOARD WITH TRACKS ON THE BACK WALL OF COMPARTMENT LS1 LS2, LS3 RS2 & RS3

REV	DATE	BY	CH	IMPEL
1	10DEC18	COL	MSA	DATA
2	05NOV18	MMF	MSA	MAKE
3	08OCT18	MMF	MSA	PIERCE
4	06AUG18	MMF	NPE	MODEL

TITLE FOR DWG NO.	1500-D-750P, 152" FULL HEIGHT FRONT & REAR (2) SPEEDLAYS, LADDERS THRU BODY, DELUGE	JOB NO.	32752
	VILLA PARK FIRE DEPARTMENT	SCALE	1:24
	VILLA PARK, ILLINOIS	DRAWN BY	MMF
		CHECKED BY	NPE
SHEET NO.	32752AD	SHEET SIZE	D
		SHEET NO.	1 OF 1