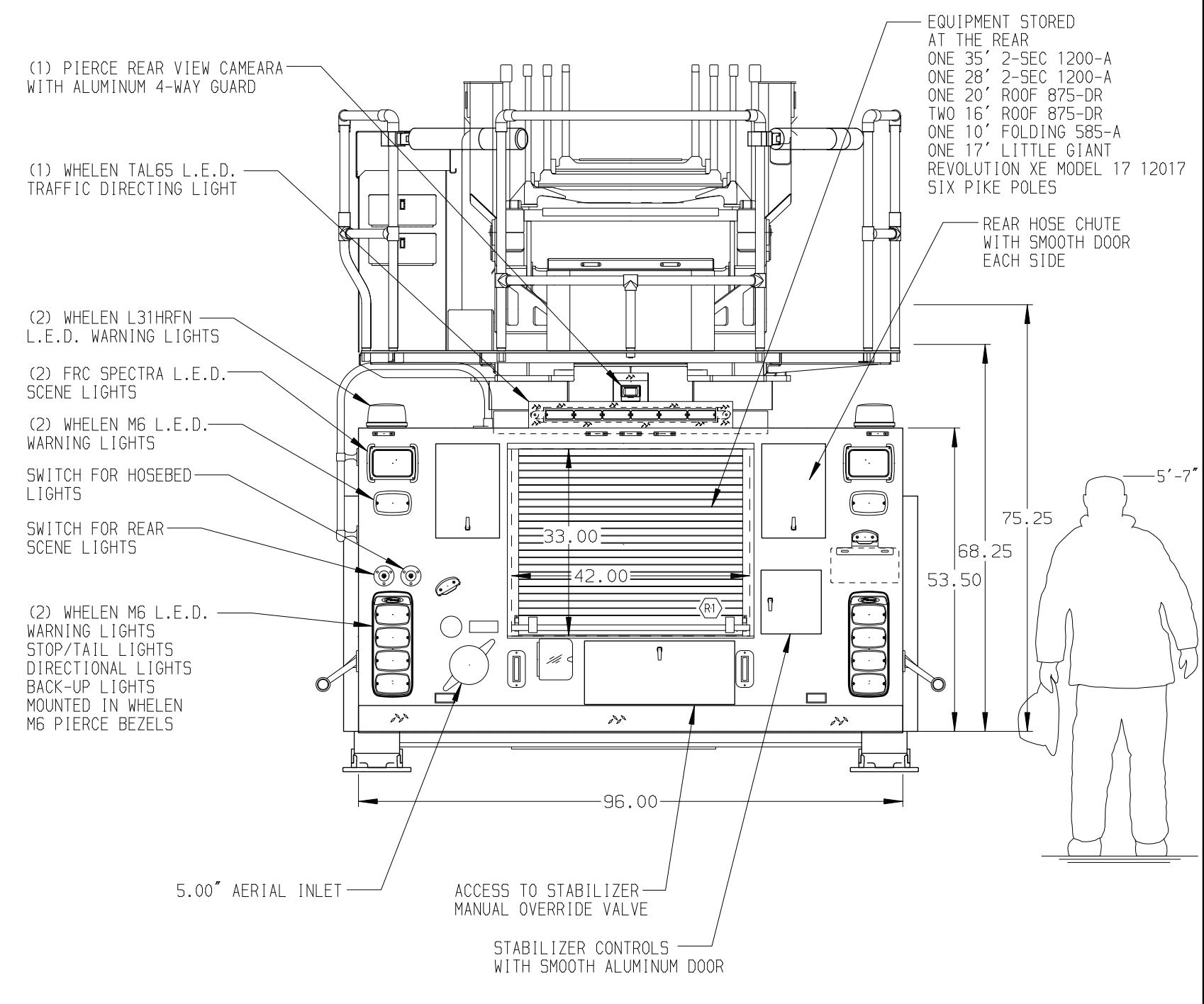


BODY	WATER TANK
107' ASL Tandem Axle Aluminum Body PUC	500 Gallon Notched Poly Water Tank
COMPT, DRIVER SIDE FRONT	Foam System
FH/FD Rollup Forward w/o Chute	Husky 3 Single Agent Foam System
COMPT, DRIVER SIDE REAR	Foam Cell
Full Height Rollup and Liftup Rearward	20 Gallon Foam Cell, Non-Reduced Water, PUC
COMPT, PASSENGER SIDE FRONT	
Full Height Rollup and Liftup Rearward	
COMPT, PASSENGER SIDE REAR	
Full Height Rollup and Liftup Rearward	



CHASSIS	CAB	AXLE, FRONT, CUSTOM	TRANSMISSION	PUMPHOUSE	CROSSLAYS, 1.50"	SPEEDLAYS	SAFETY
Enforcer Chassis, PUC ENGINE 525 HP DD13 Engine	8410 Enforcer Cab, PUC, Notched BUMPER 26" Underlung, Painted Steel	22,800 Lb Meritor Axle AXLE, REAR 52,000 Lb Meritor Axle	Allison 5th Gen, 4500 EVS P	Control Zone, PAL/PAP PUC PUMP 1500 GPM Pierce PUC	(2) 1.50", Poly Trays, 200' CROSSLAYS, 2.50" (1) 2.50", Poly Tray, 200'	Speedlays Not Required GENERATOR Harrison 6kW MSV Hydraulic	Side Roll and Frontal Impact Protection

NOTE

DIMENSIONS SHOWN ARE APPROXIMATE AND ARE SUBJECT TO MINOR DEVIATIONS AS MAY OCCUR OR BE NECESSARY IN CONSTRUCTION. MINOR DETAILS NOT SHOWN.

1. WIRING FOR AUTOMATIC TIRE CHAINS
2. SHORELINE RECEPTACLE WITH KUSSMALL SUPER AUTO-EJECT LOCATED ON DRIVER SIDE CAB CORNER
3. AIR INLET WITH KUSSMALL AIR EJECT WITH COVER LOCATED ON DRIVER SIDE CAB CORNER
4. AIR OUTLET WITH SHUT OFF VALVE LOCATED ON DRIVER SIDE PUMP PANEL
5. BATTERY CHARGER LOCATED BEHIND DRIVER'S SEAT
6. BATTERY CHARGE INDICATOR LOCATED ON THE DRIVER SIDE SEAT RISER
7. EIGHT ADJUSTABLE SHELVES LOCATED PER SHOP ORDER
8. ONE TILTING-SLIDE-OUT TRAY LOCATED PER SHOP ORDER
9. TWO FLOOR MOUNTED SLIDE-OUT TRAYS LOCATED PER SHOP ORDER
10. TWO SLIDE-OUT TOOLBOARDS LOCATED PER SHOP ORDER
11. ONE ADJUSTABLE SLIDE-OUT TRAY IN COMPARTMENT PER SHOP ORDER
12. ONE VERTICAL PARTITION IN COMPARTMENT PER SHOP ORDER
13. 4-SLOT HORIZONTAL AIR BAG RACK IN COMPARTMENT PER SHOP ORDER
14. CTECH FOUR DRAWER ASSEMBLY LOCATED PER SHOP ORDER
15. CIRCUIT BREAKER PANEL LOCATED PER SHOP ORDER
16. 3.00" RAISED AERIAL REFEED
17. 1500 GPM HIGH FLOW WATERWAY
18. REMOTE LADDER CONTROLS AT AERIAL TIP
19. 120V POWER TO AERIAL TIP
20. MOUNTING BRACKETS FOR PIKE POLE AT AERIAL FLY SECTION

Pierce MANUFACTURING INC.		JOB NO.	32783
SCALE	1:24	DATE	
TITLE	107' ASCENDANT AERIAL LADDER AND BODY ASSEMBLY		
FOR	SHEPHERDSVILLE FIRE DEPARTMENT SHEPHERDSVILLE, KENTUCKY		
CHECKED BY	GRM	DATE	25MAY18
DWG NO.	32783AD		
SHEET SIZE	D	SHEET NO.	1 OF 1