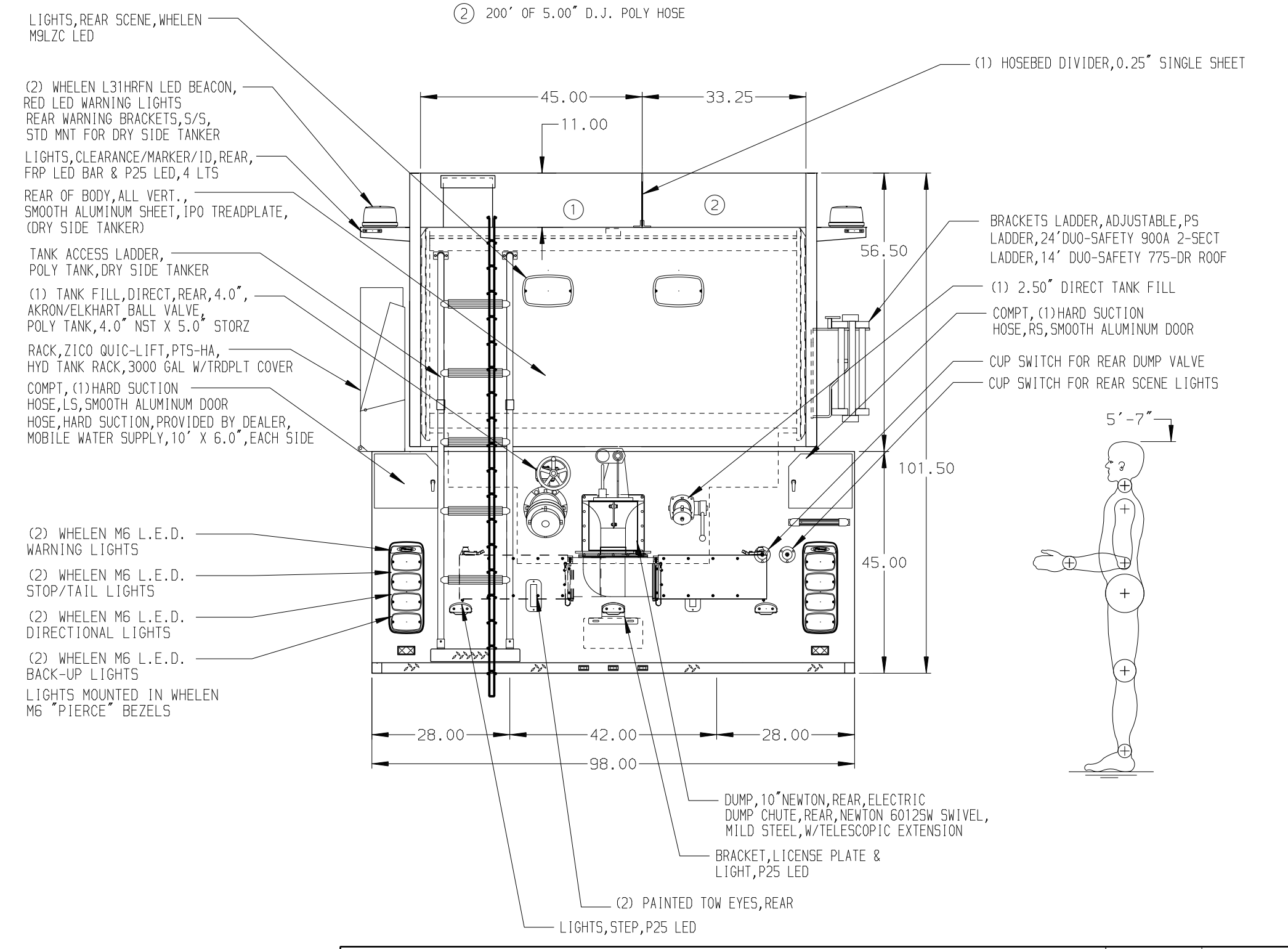


- HOSEBED CAPACITIES
- ① 750' OF 2.50" D.J. POLY HOSE
 - ② 200' OF 5.00" D.J. POLY HOSE



ALUMINUM BODY

NOTE
DIMENSIONS SHOWN ARE APPROXIMATE AND ARE SUBJECT TO MINOR DEVIATIONS AS MAY OCCUR OR BE NECESSARY IN CONSTRUCTION. MINOR DETAILS NOT SHOWN.

				JOB NO.	32811
				SCALE	DATE
Pierce MANUFACTURING INC.				DRAWN BY	JAF
				CHECKED BY	RWI
TITLE 1250-D-3000 3000 GAL WATERTANK, 182" DRYSIDE 34" SIDE CONTROL, (2) CROSSLAYS MAKE FL FOR WOODFORD COUNTY FIRE PROTECTION DISTRICT VERSAILLES, KENTUCKY MODEL M2-106 DWG NO. 32811AD				CHECKED BY	RWI
				SHEET SIZE	D
REV DATE BY CH				SHEET NO.	1 OF 1