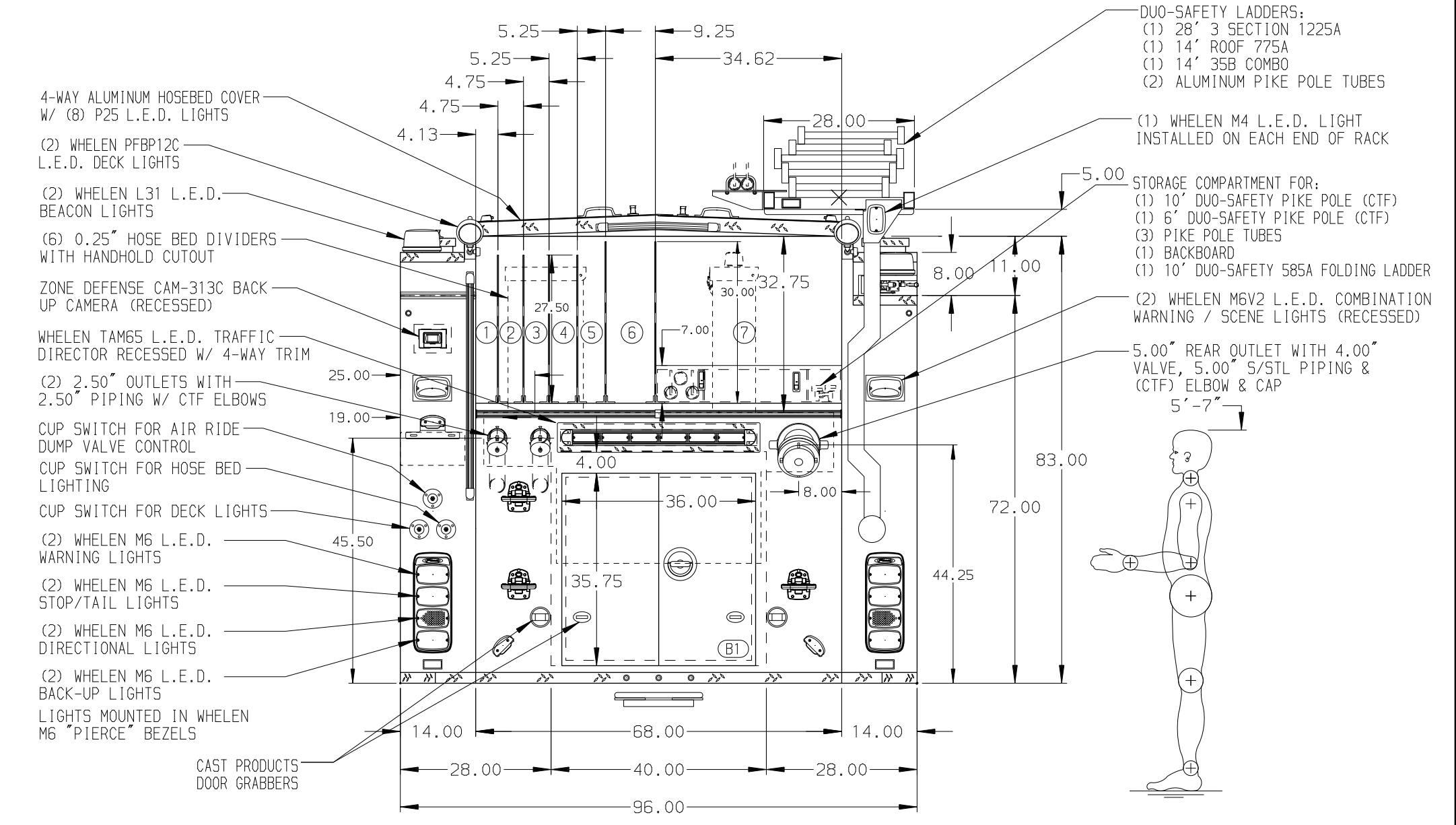


- HOSEBED CAPACITIES**
- ① - OPEN BAY 4\"/>



(ALUMINUM BODY) (MAXIMUM O.A.H. 125.00") (MAXIMUM O.A.L. 373.00") (SIDE ROLL AND FRONTAL IMPACT PROTECTION)

NOTE
DIMENSIONS SHOWN ARE APPROXIMATE AND ARE SUBJECT TO MINOR DEVIATIONS AS MAY OCCUR OR BE NECESSARY IN CONSTRUCTION. MINOR DETAILS NOT SHOWN.

1. ONSPOT AUTOMATIC TIRE CHAINS TO BE PROVIDED AT REAR
2. BATTERY CHARGER INDICATOR LOCATED ON DRIVER'S SEAT RISER
3. PULL STRAP ON DOOR IN COMPARTMENTS RS2 & LS2
4. TWO ADJUSTABLE SLIDE-OUT TRAYS IN COMPARTMENT B1
5. ON FLOOR MOUNTED SLIDE-OUT TRAY IN COMPARTMENT RS1
6. AIR INLET WITH DISCONNECT COUPLING ON DRIVER'S SEAT RISER
7. AIR OUTLET WITH SHUT-OFF VALVE INSTALLED ON LS PUMP PANEL
8. KUSSMAUL LPC 40 BATTERY CHARGER INSTALLED ON FORWARD FACING CREW CAB SEAT RISER
9. FULL WIDTH/DEPTH ADJUSTABLE SHELVES LOCATED: (1) IN LS2, (2) IN RS1 AND RS3, (3) IN LS1 & LS3
10. ONE SWING-OUT TOOLBOARD IN COMPARTMENT RS2
11. THREE 15/20A 120V DUPLEX RECEPTACLES LOCATED INSIDE CAB
12. ONE 15/20A 120V DUPLEX RECEPTACLE LOCATED IN LS1, LS3, RS1, & RS3
13. 0.75\"/>

REV	DATE	BY	CH	ENFORCER
▽	20NOV18	KLE	MSA	CHASSIS DATA
▽	25OCT18	LME	WKL	MAKE
▽	24OCT18	LME	MSA	PIERCE
▽	18OCT18	LME	MSA	PIERCE
▽	29AUG18	GVH	WKL	MODEL

	MANUFACTURING INC.		JOB NO.	32880 (01-02)
			SCALE	1:24
TITLE 2000-D-530P, 500G WTR, 30G FOAM, 145" SPC SHORT BODY (4) CROSSLAYS, DELUGE, BOOSTER REEL, HYD LADDER RACK		DRAWN BY		GVH
		DATE		28AUG18
FOR NORTH HIGHLINE FIRE DISTRICT SEATTLE, WASHINGTON		CHECKED BY		WKL
		DATE		22AUG18
DWG NO. 32880AD		SHEET SIZE		D
		SHEET NO.		1 OF 1