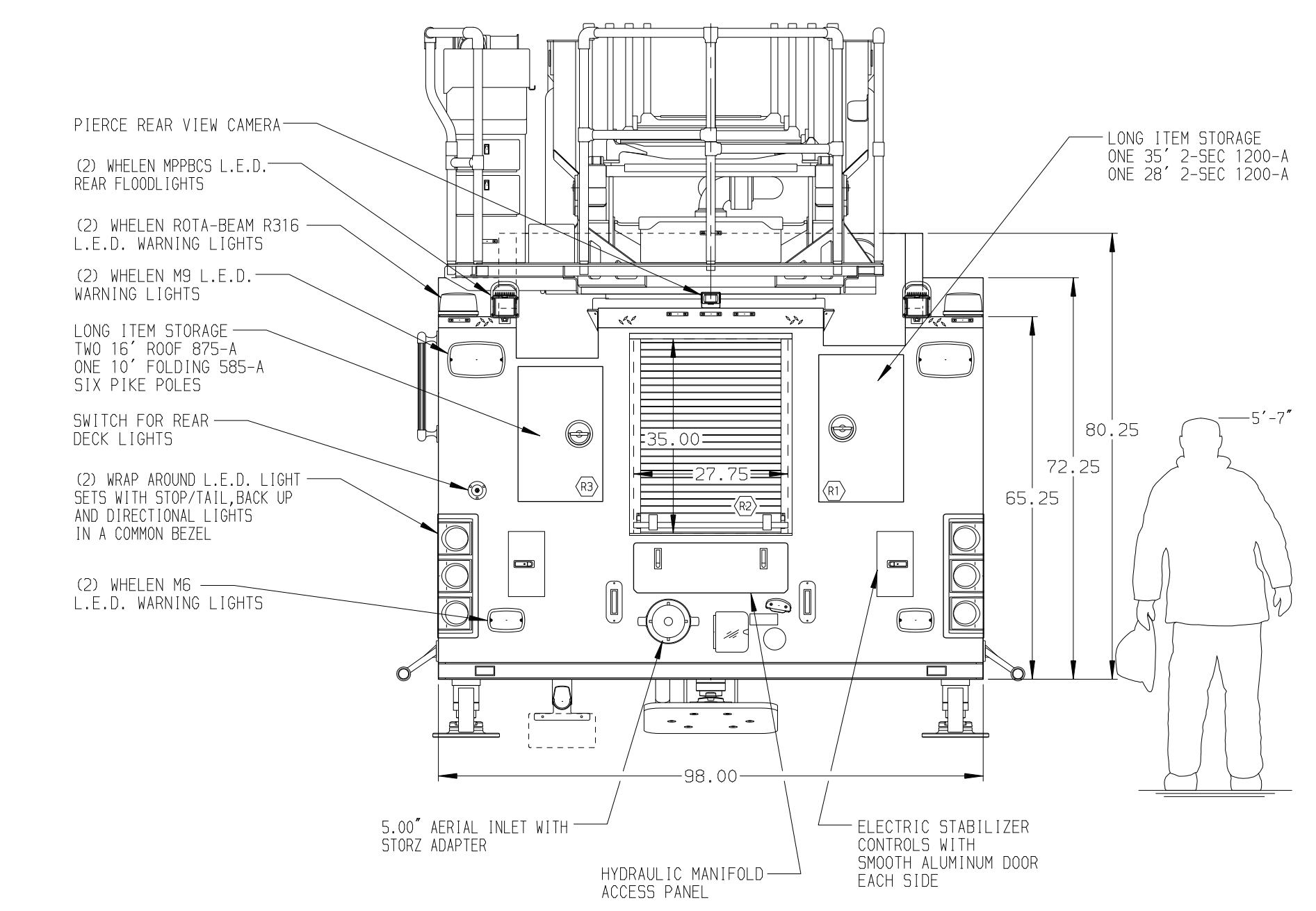
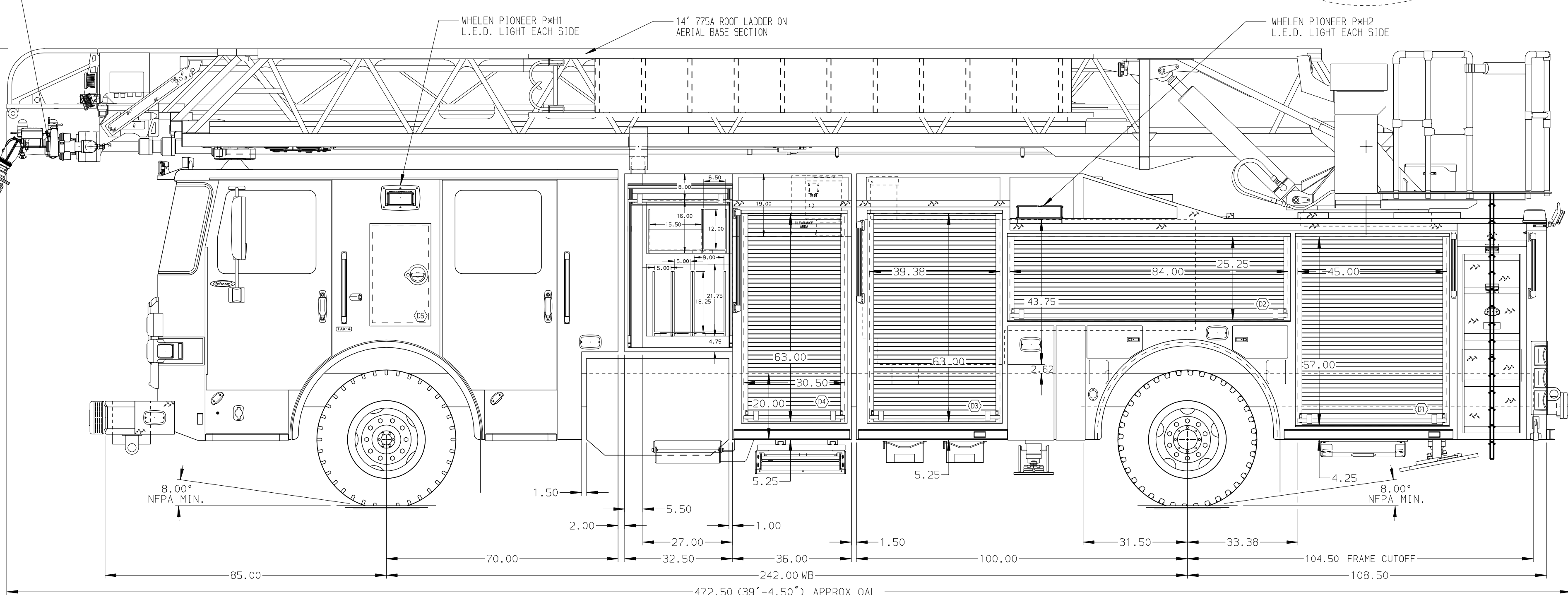


BODY 107' ASL Aluminum Body PUC COMPT, DRIVER SIDE FRONT Full Height RollUp Forward COMPT, DRIVER SIDE REAR Full Height RollUp Rearward COMPT, PASSENGER SIDE FRONT Full Height RollUp Forward COMPT, PASSENGER SIDE REAR Full Height RollUp Rearward	WATER TANK 480 GalLon Poly Water Tank Foam System Husky 3 Single Agent Foam System Foam Cell 20 GalLon Foam Cell, Reduced Water, PUC
---	--



CHASSIS Enforcer Chassis, PUC 525 HP DD13 Engine	CAB 7000 Enforcer Cab, PUC 16" Extended Stainless Steel BUMPER	AXLE, FRONT, CUSTOM 24,000 Lb TAK-4 Axle AXLE, REAR 33,500 Lb Meritor Axle	TRANSMISSION Allison 5th Gen, 4500 EVS P PUMP 1500 GPM Pierce PUC	PUMPHOUSE Control Zone, PAL/PAP PUC CROSSLAYS, 1.50" (2) Full Width Trays, 150' of 1.75"	Rear Upper Deadlay (1) Full Width Tray, 200' of 1.75" CROSSLAYS, 2.50" (1) Full Width Tray, 200' of 2.50"	SPEEDLAYS Speedlays Not Required GENERATOR Generator Not Required	SAFETY Side Roll and Frontal Impact Protection
NOTE DIMENSIONS SHOWN ARE APPROXIMATE AND ARE SUBJECT TO MINOR DEVIATIONS AS MAY OCCUR OR BE NECESSARY IN CONSTRUCTION. MINOR DETAILS NOT SHOWN.							
1. NO LIMITED RETRACTION REQUIRED. 2. ONE 1.50 OUTLET WITH 2.00 PIPING LOCATED IN CENTER BUMPER TRAY 3. SHORELINE RECEPTACLE WITH KOSMOSL SUPER AUTO-EJECT LOCKED IN THE DRIVER SIDE STEPWELL 4. AIR INLET WITH DISCONNECT COUPLING IN THE DRIVER SIDE STEPWELL 5. AIR OUTLET WITH SHUT-OFF VALVE LOCATED ON THE DRIVER SIDE PUMP PANEL PER SHOP ORDER 6. AIR COMPRESSOR LOCATED BEHIND THE DRIVER'S SEAT PER SHOP ORDER 7. BATTERY CHARGER LOCATED BEHIND THE DRIVER'S SEAT PER SHOP ORDER 8. BATTERY CHARGER INDICATOR LOCATED ON THE DRIVER'S SIDE SEAT RISER 9. TEN ADJUSTABLE SHELVES IN COMPARTMENTS PER SHOP ORDER		10. ONE ADJUSTABLE SHELF (SPECIAL SIDE HEIGHT) IN COMPARTMENT PER SHOP ORDER 11. TWO FLOOR MOUNTED SLIDE-OUT TRAYS IN COMPARTMENTS PER SHOP ORDER 12. ONE SWING-OUT ALUMINUM TOOL BOARD IN COMPARTMENT PER SHOP ORDER 13. ONE (3) DRAWER CTECH DRAWER ASSEMBLY IN COMPARTMENT PER SHOP ORDER 14. ANGLED BLISTER AT INSIDE CORNERS OF COMPARTMENT PER SHOP ORDER 15. ONE VERTICAL DIVIDER IN COMPARTMENT PER SHOP ORDER 16. FIVE ALUMINUM PEGBOARD WITH TRACKS ON THE BACK WALL OF COMPARTMENTS PER SHOP ORDER 17. NON-RAISED AERIAL PEGBOARD 18. 1500 GPM HIGH FLOW WATERWAY					

		JOB NO.	32938
TITLE 107' ASCENDANT AERIAL LADDER AND BODY ASSEMBLY		SCALE	1:24
MAKE PIERCE		DATE	25JUL18
FOR LEBANON FIRE RESCUE LEBANON, OREGON		CHECKED BY	GRM
DWG NO. 32938AD		SHEET NO.	1 OF 1
REV	DATE	BY	CH
27SEP18	TKA	KBO	
31AUG18	TKA	KBO	