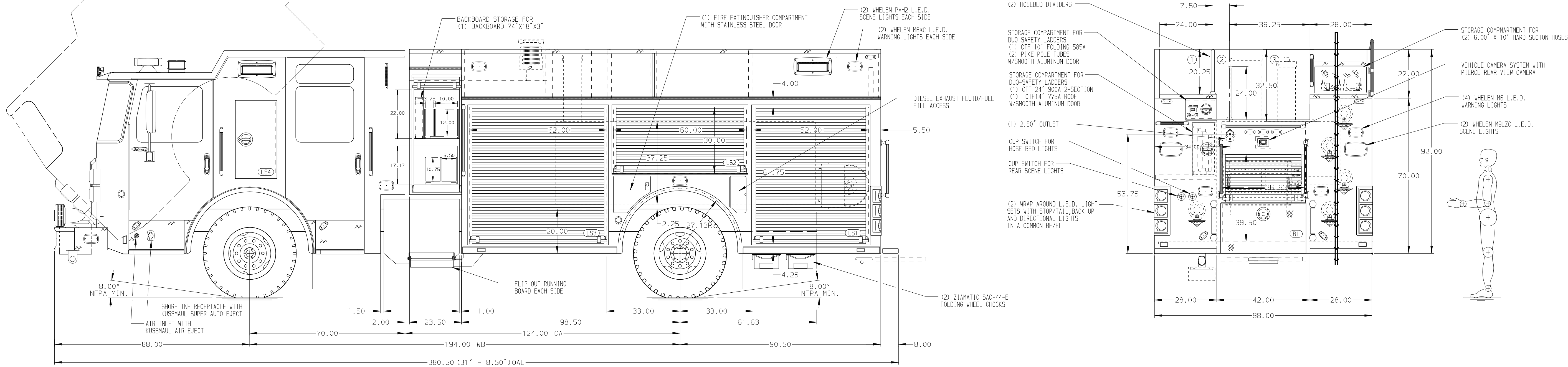


- HOSEBED CAPACITIES
- ① 400' of 2.50" D.J. POLY HOSE
 - ② 150' OF 2.50" D.J. POLY HOSE
 - ③ 1000' OF 5.00" D.J. POLY HOSE



ALUMINUM BODY

NOTE

DIMENSIONS SHOWN ARE APPROXIMATE AND ARE SUBJECT TO MINOR DEVIATIONS AS MAY OCCUR OR BE NECESSARY IN CONSTRUCTION. MINOR DETAILS NOT SHOWN.

- BATTERY CHARGER LOCATED IN PUMP PLUMBING AREA
- BATTERY CHARGER INDICATOR LOCATED ON DRIVER'S SEAT RISER
- DUAL L.E.D. LIGHT STRIPS LOCATED IN HOSE BED
- ONE ADJUSTABLE FULL WIDTH/DEPTH SHELF IN COMPARTMENT RS2, TWO IN LS1, LS3, RS1 & RS3
- ONE FLOOR MOUNTED SLIDE-OUT TRAY WITH 2" SIDES IN COMPARTMENTS LS1 & RS1
- ONE SWING-OUT ALUMINUM TOOL BOARD IN COMPARTMENT LS2
- ALL FOLDING STEPS TO BE TRIDENT WITH INTEGRATED L.E.D. LIGHT UNLESS SPECIFIED
- HANNAY BOOSTER HOSE REEL (EF-32-19-21) WITH CAPACITY FOR 100' OF 1.00" BOOSTER HOSE IN B1 COMPARTMENT

REV	DATE	BY	CH	ENFORCER
1	24JAN19	AMI	MSA	MAKE
2	21DEC18	AMI	MSA	PIERCE
3	05OCT18	LME	WKL	MODEL

Pierce MANUFACTURING INC.		JOB NO.	32943
		SCALE	1:24
		DATE	
		DRAWN BY	LME
		CHECKED BY	WKL
		SHEET SIZE	D
		SHEET NO.	1 OF 1

TITLE	1500-D-730 WATER/20 FOAM, 189" BODY, SIDE CONTROL CROSSLAYS/DEADLAY, LADDERS IN BODY, FOAM SYSTEM
FOR	COOS BAY FIRE & RESCUE COOS BAY, OREGON
DWG NO.	32943AD