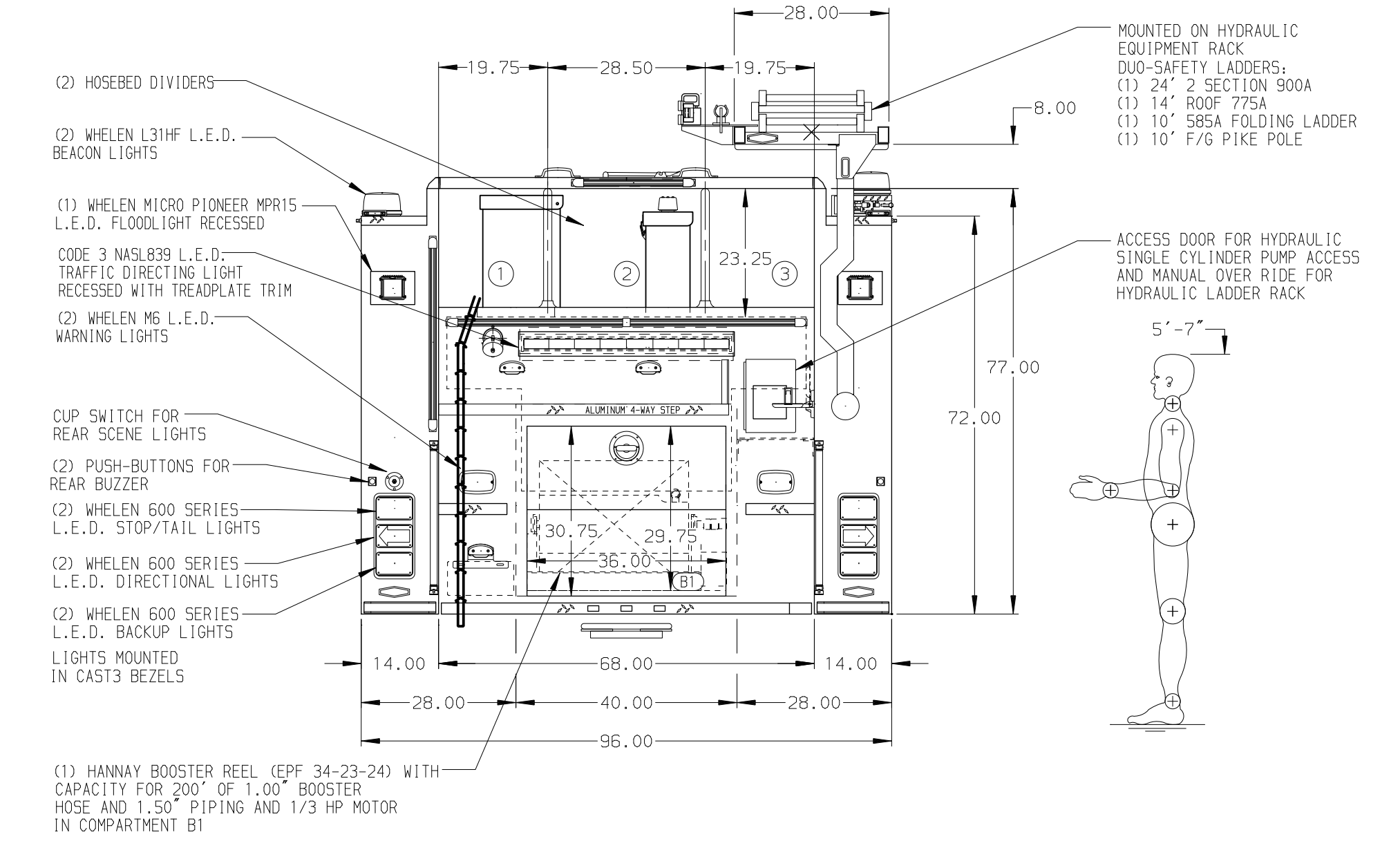
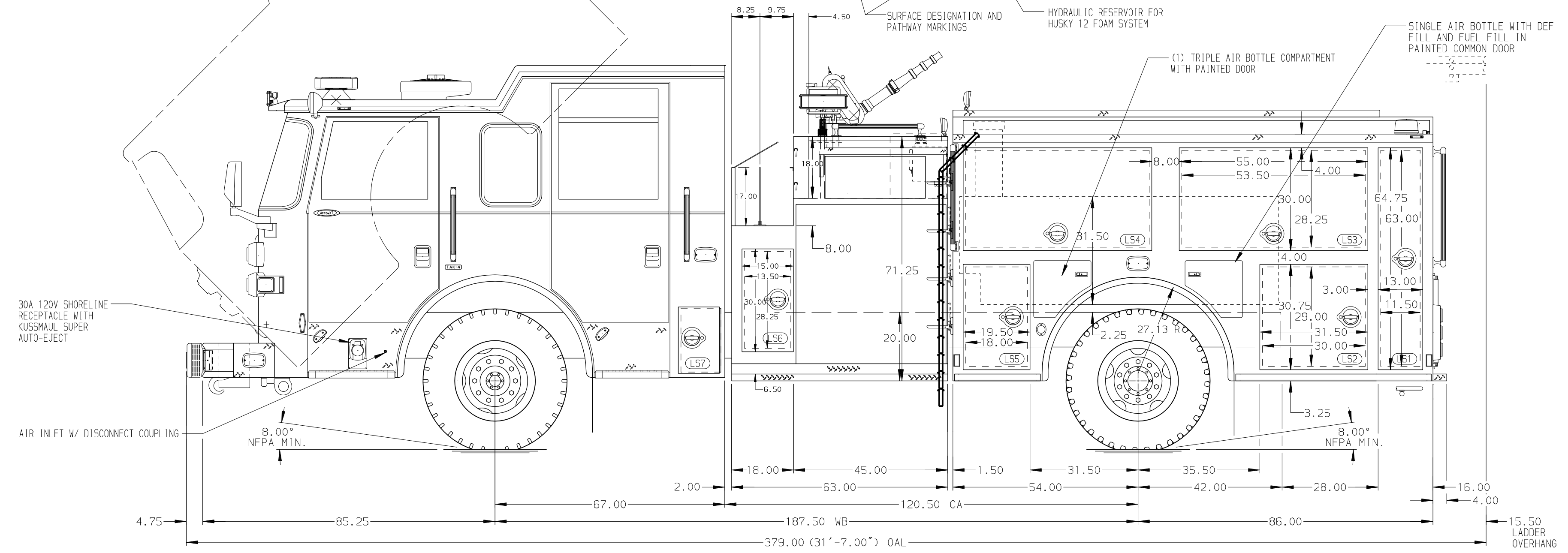


HOSEBED CAPACITIES

- 900' OF 2.50" HOSE
- 700' OF 4.00" HOSE
- 900' OF 2.50" HOSE



GALVANNEAL

NOTE:
DIMENSIONS SHOWN ARE APPROXIMATE AND ARE SUBJECT TO MINOR DEVIATIONS AS MAY OCCUR OR BE NECESSARY IN CONSTRUCTION.
MINOR DETAILS NOT SHOWN.

- BRUSHED S/S SCUFFPLATES ON INTERIOR OF CAB DOORS
- BRUSHED S/S SCUFFPLATE ON CAB DOOR JAMBS
- BRUSHED S/S SCUFFPLATE ON THE BOTTOM OF EACH SIDE COMPARTMENT DOOR FRAME
- BRUSHED S/S SCUFFPLATE INSIDE OF EACH SIDE COMPARTMENT DOOR
- BATTERY CHARGER LOCATED IN COMPARTMENT LS3
- BATTERY CHARGE INDICATOR LOCATED NEAR DRIVER'S SEAT RISER WITH BRACKET
- DUAL L.E.D. LIGHT STRIPS LOCATED IN HOSE BED
- PULL STRAP ON DOOR IN COMPARTMENTS LS3, LS4, RS3 AND RS4
- ONE ADJUSTABLE VERTICAL PARTITION IN COMPARTMENT LS4 AND RS4
- PARTITION BETWEEN COMPARTMENTS LS1/B1 AND RS1/B1
- ALUMINUM PEGBOARD WITH TRACKS ON THE BACK WALL OF COMPARTMENTS LS3, LS4, RS3 AND RS4
- ONE PERMANENTLY MOUNTED SHELF IN COMPARTMENT LS2, LS5, RS1, RS5, TWO IN LS6, RS6, LS1
- TRANSVERSE STORAGE ABOVE REAR COMPARTMENT FOR PRY BARS AND LONG HANDLED TOOLS
- STORAGE RACK IN RS2
- WORDEN HMGV-58 WHEEL CHOCKS AND MOUNTING BRACKETS TO BE MOUNTED AT PICKUP

		JOB NO.	32951
		SCALE	1:24
MANUFACTURING INC.		DATE	30AUG18
		DRAWN BY	LME
1500-D-500P, 25 GAL FOAM CELL, 140" SHORT BODY (2) X-LAYS, HYD LADDER RACK, FRONT INLET, HOSE REEL		CHECKED BY	AZA
		SHEET SIZE	D
OXNARD FIRE DEPARTMENT OXNARD, CALIFORNIA		SHEET NO.	1 OF 1
		DWG NO.	32951AD

REV	DATE	BY	CH	ARROW	XT
1	21JAN19	KLE	RWA	CHASSIS	DATA
2	15JAN19	KLE	RWA	MAKE	PIERCE
3	17DEC18	KLE	PJP	MODEL	
4	21NOV18	KLE	EFA		
5	07SEP18	AMI	AZA		