

### PUMPER BODY

Long Aluminum 2nd Gen Pumper

### CHASSIS

Impel Chassis

### CHASSIS AXLE, FRONT, CUSTOM

19,500 Lb Meritor Axle

### AXLE, REAR

27,000 Lb Meritor Axle

### ENGINE

450 HP Cummins L9 Engine

### TRANSMISSION

Allison 5th Gen, 3000 EVS P

### BUMPER

22" Extended Steel Pointed

### CAB

6010 Impel FR Cab

### BODY WATER TANK

750 Gallon Poly Water Tank

### COMPT, PUMPER, REAR

44.50" FF RollUp Rear Compt

### COMPT, PUMPER, DRIVER SIDE

161" RollUp Full Height Front & Rear FDLR

### COMPT, PUMPER PASS. SIDE

161" RollUp Full Height Front & Rear FDLR

### FIRE SUPPRESSION PUMPHOUSE

48" Control Zone Top Mount

### PUMP

1250 GPM Waterous CS

### CROSSLAYS, 1.50"

1.50" Crosslays Not Required

### CROSSLAYS, 2.50"

2.50" Crosslays Not Required

### SPEEDLAYS

(2) 1.50" Standard Capacity

### GENERATOR

Generator Not Required

### Foam System

Foam System Not Required

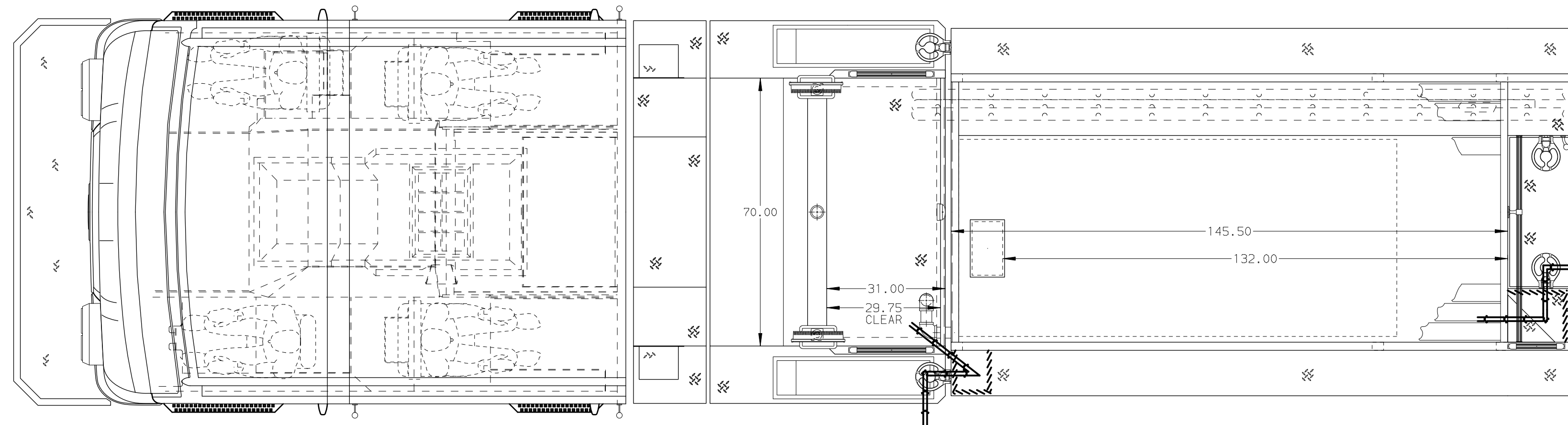
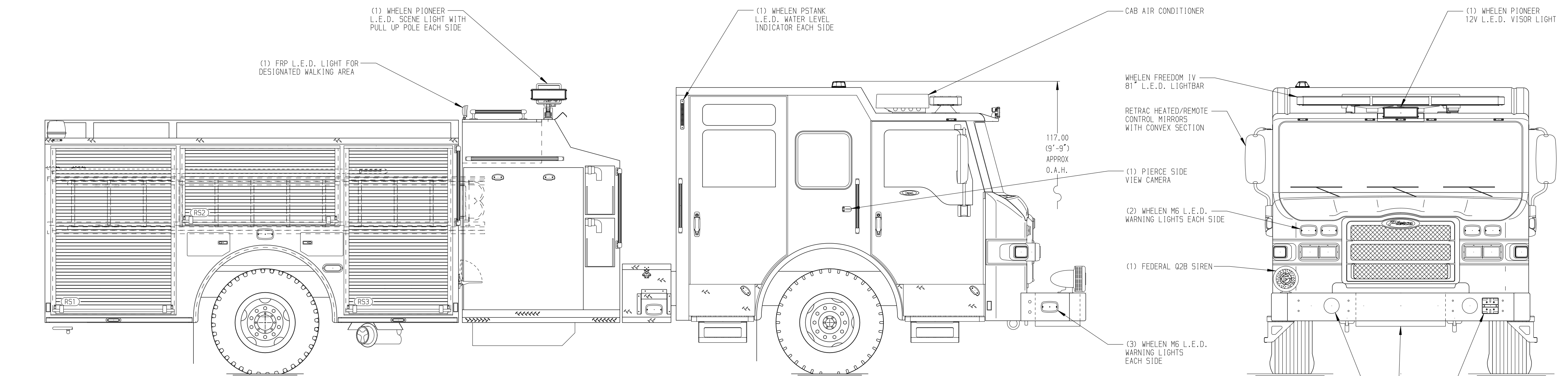
### Foam Cell

Foam Cell Not Required

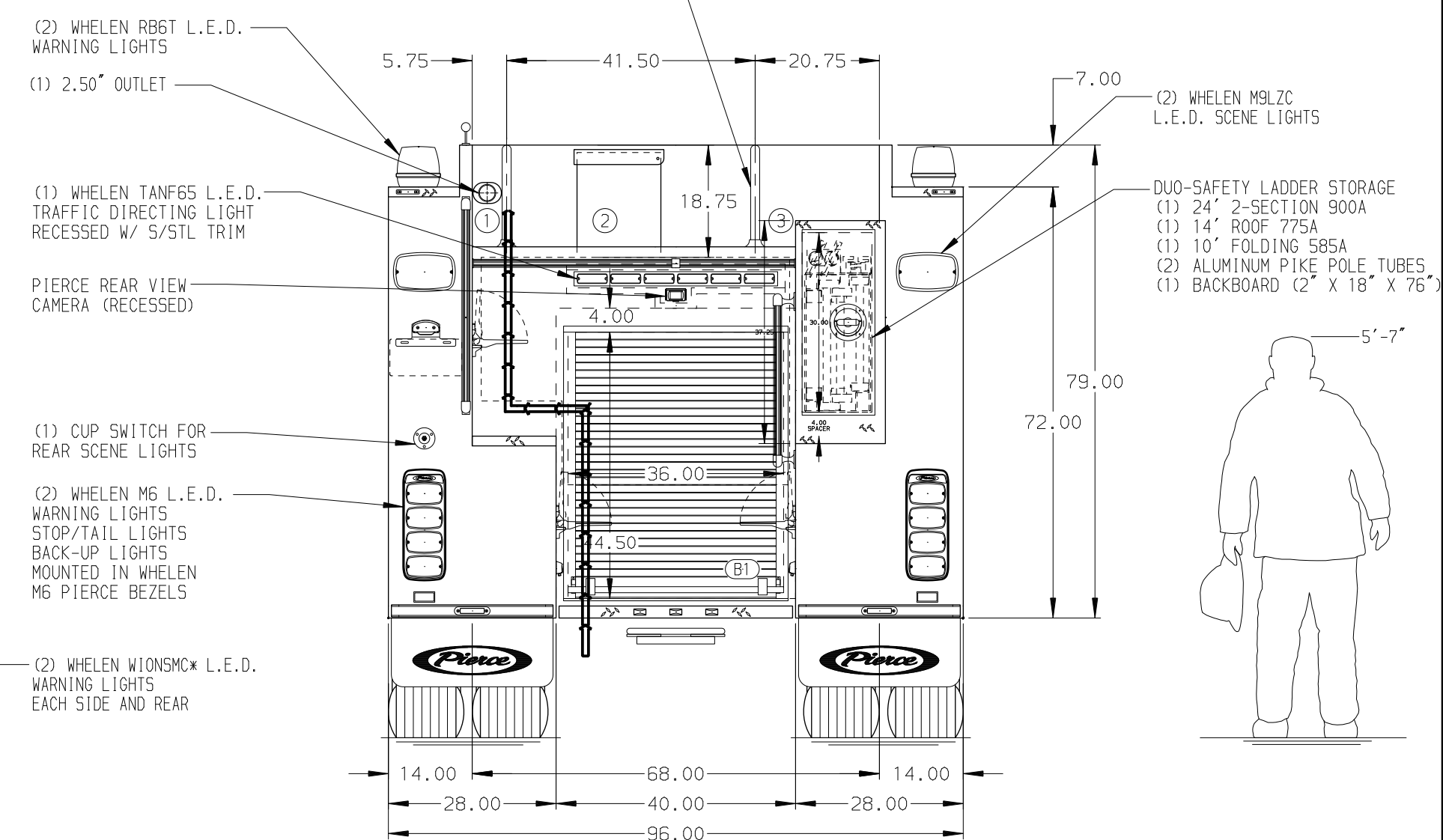
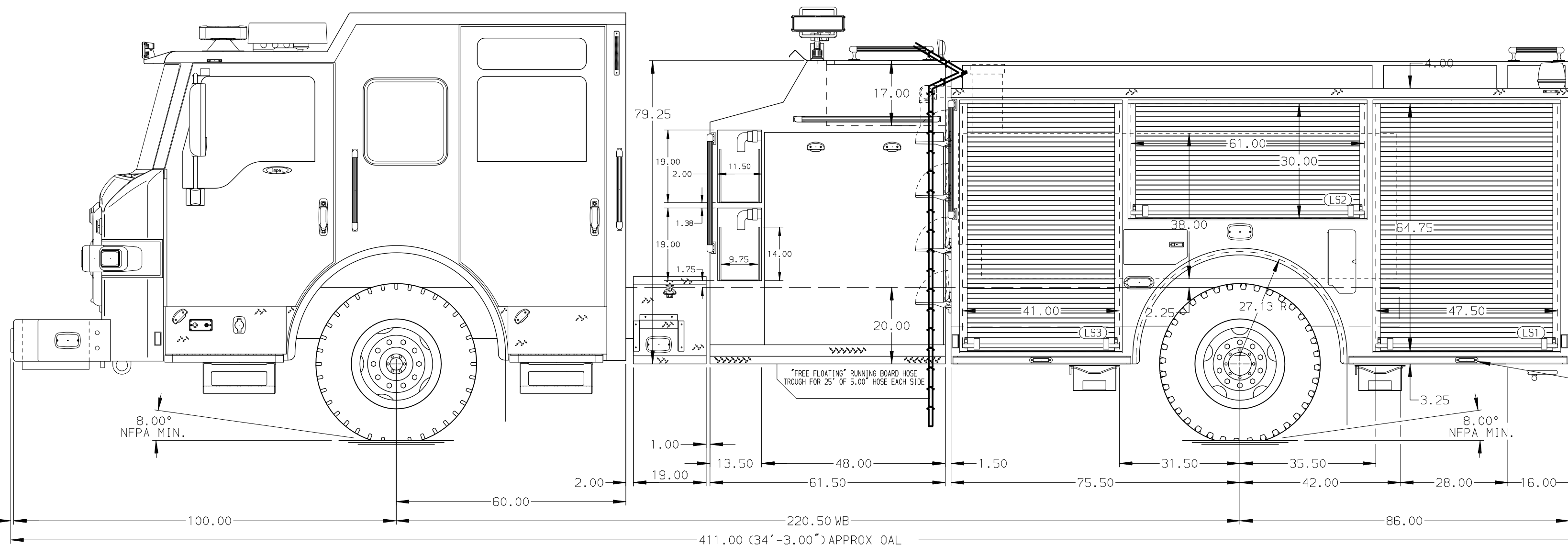
Frontal Impact Protection

**NOTE**  
DIMENSIONS SHOWN ARE APPROXIMATE AND ARE SUBJECT TO MINOR DEVIATIONS AS MAY OCCUR OR BE NECESSARY IN CONSTRUCTION. MINOR DETAILS NOT SHOWN.

- ONE 1.50" OUTLET WITH 2.00" PIPING AND SWIVEL LOCATED IN CENTER BUMPER TRAY
- SHORELINE RECEPTACLE WITH KUSSMAUL SUPER AUTO-EJECT LOCATED IN DRIVER SIDE STEPWELL
- AIR INLET/OUTLET WITH DISCONNECT COUPLING IN DRIVER SIDE STEPWELL
- BATTERY CHARGER LOCATED IN COMPARTMENT D3
- BATTERY CHARGE INDICATOR LOCATED ON D.S. SEAT RISER
- TWO FLOOR MOUNTED SLIDE-OUT TRAYS LOCATED PER SHOP ORDER
- SEVEN ADJUSTABLE SHELVES LOCATED PER SHOP ORDER
- ONE SWING-OUT TOOLBOARD LOCATED PER SHOP ORDER
- ALUMINUM TOOLBOARD LOCATED PER SHOP ORDER
- ONE VERTICAL PARTITION LOCATED PER SHOP ORDER



| HOSEBED CAPACITY |                               |
|------------------|-------------------------------|
| <b>BED 1</b>     | 200' OF 2.50" D.J. POLY HOSE  |
| <b>BED 2</b>     | 1000' OF 5.00" D.J. POLY HOSE |
| <b>BED 3</b>     | 500' OF 3.00" D.J. POLY HOSE  |



|  |         |                                |            |     |           |        |
|--|---------|--------------------------------|------------|-----|-----------|--------|
|  |         | JOB NO.                        | 33031      |     |           |        |
|  |         | SCALE                          | DATE       |     |           |        |
| <b>Pierce</b> MANUFACTURING INC.                 | TITLE   | PIERCE PUMPER APPROVAL DRAWING | DRAWN BY   | COL | 27AUG18   |        |
|  | FOR     | NORTH RIVER FIRE DISTRICT      | CHECKED BY | KBO | 30AUG18   |        |
| CHASSIS DATA<br>MAKE<br>PIERCE<br>MODEL<br>IMPEL | DWG NO. | 33031AD                        | SHEET SIZE | D   | SHEET NO. | 1 OF 1 |

|         |      |     |     |
|---------|------|-----|-----|
| REV     | DATE | BY  | CH  |
| 040CT18 |      | COL | KBO |