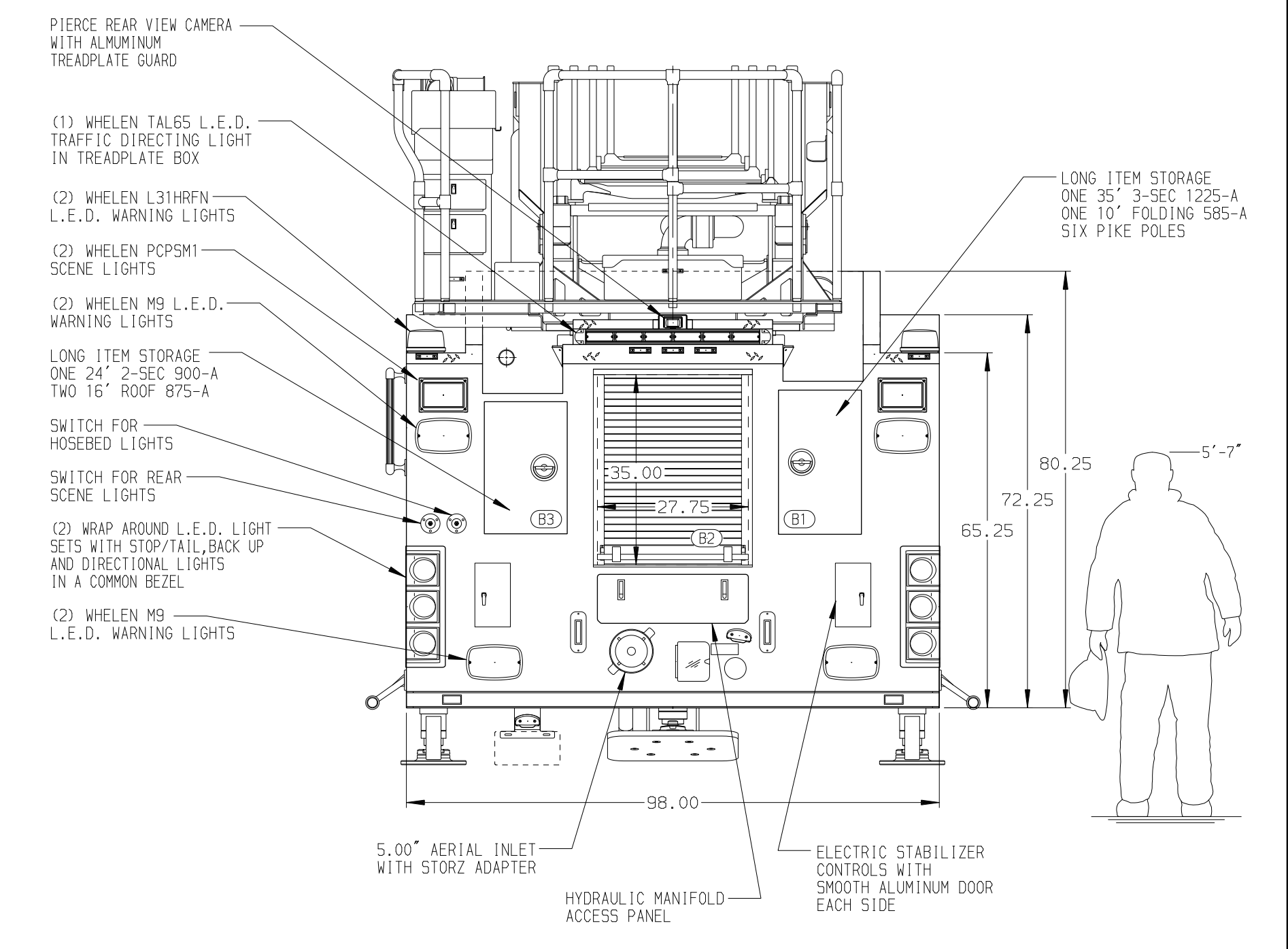


BODY 107' ASL Aluminum Body PUC COMPT, LEFT SIDE FRONT Full Height RollUp Forward COMPT, LEFT SIDE REAR Full Height RollUp Rearward COMPT, RIGHT SIDE FRONT Full Height RollUp Forward COMPT, RIGHT SIDE REAR Full Height RollUp Rearward	WATER TANK 500 Gallon Poly Water Tank Foam System Foam System Not Required Foam Cell Foam Cell Not Required
---	---



CHASSIS Enforcer Chassis, PUC 450 HP Cummins L9 Engine	CAB 7000 Enforcer Cab, PUC 22" Extended Painted Steel	AXLE, FRONT, CUSTOM 22,800 Lb Dana Axle AXLE, REAR 33,500 Lb Meritor Axle	TRANSMISSION Allison 5th Gen, 3000 EV5 P	PUMPHOUSE Control Zone, PAL/PAP PUC PUMP 1500 GPM Pierce PUC	CROSSLAYS, 1.50" (2) 1.50", Poly Trays, 200' CROSSLAYS, 2.50" (1) 2.50", Poly Tray, 200'	SPEEDLAYS Speedlays Not Required GENERATOR Honda EM6500 Gas	SAFETY Side Roll and Frontal Impact Protection
---	--	--	--	--	---	---	---

NOTE
DIMENSIONS SHOWN ARE APPROXIMATE AND ARE SUBJECT TO MINOR DEVIATIONS AS MAY OCCUR OR BE NECESSARY IN CONSTRUCTION. MINOR DETAILS NOT SHOWN.

- SHORELINE RECEPTACLE WITH KUSSMAUL SUPER AUTO-EJECT LOCATED ON DRIVER SIDE OF THE CAB
- AIR INLET WITH DISCONNECT COUPLING IN THE DRIVER SIDE STEPPWELL
- BATTERY CHARGER LOCATED BEHIND DRIVER'S SEAT
- ONE ADJUSTABLE TILTING SLIDE-OUT TRAY IN COMPARTMENT L52
- NO LIMITED RETRACTION REQUIRED
- TWO FLOOR MOUNTED SLIDE-OUT TRAYS IN COMPARTMENTS L51, R52
- ONE SWING-OUT ALUMINUM TOOL BOARD IN COMPARTMENT R53
- ONE VERTICAL PARTITION IN COMPARTMENT R53
- CIRCUIT BREAKER PANEL LOCATED IN COMPARTMENT L53

- 120V POWER TO AERIAL TIP
- WIRELESS CAMERA LOCATED AT AERIAL EGRESS
- NON-RAISED AERIAL PEBESTAL
- 1500 GPM HIGH FLOW WATERWAY
- REMOTE MONITOR CONTROLS AT PUMP PANEL
- ONE ADJUSTABLE FULL WIDTH/FULL DEPTH SHELF IN COMPARTMENTS L51, R51, R53-TWO IN R52, R54, R55-THREE IN L53

CHASSIS DATA	TITLE	107' ASCENDANT AERIAL LADDER AND BODY ASSEMBLY	JOB NO.	33033
MAKE	FOR	JOHNSON COUNTY FIRE DISTRICT #1 NEW CENTURY, KANSAS	SCALE	1:24
MODEL	DWG NO.	33033AD	DRAWN BY	TKA
REV	DATE		CHECKED BY	GRM
			SHEET SIZE	D
			SHEET NO.	1 OF 1