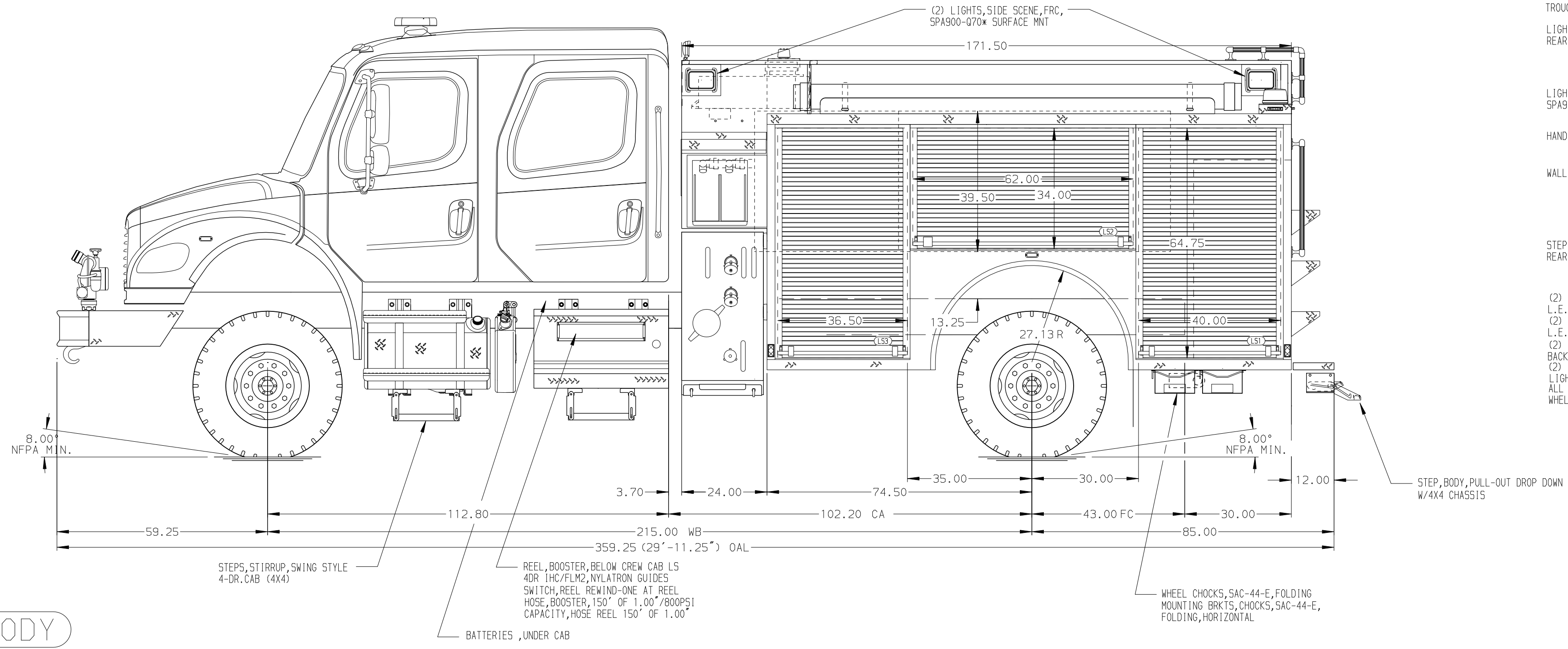
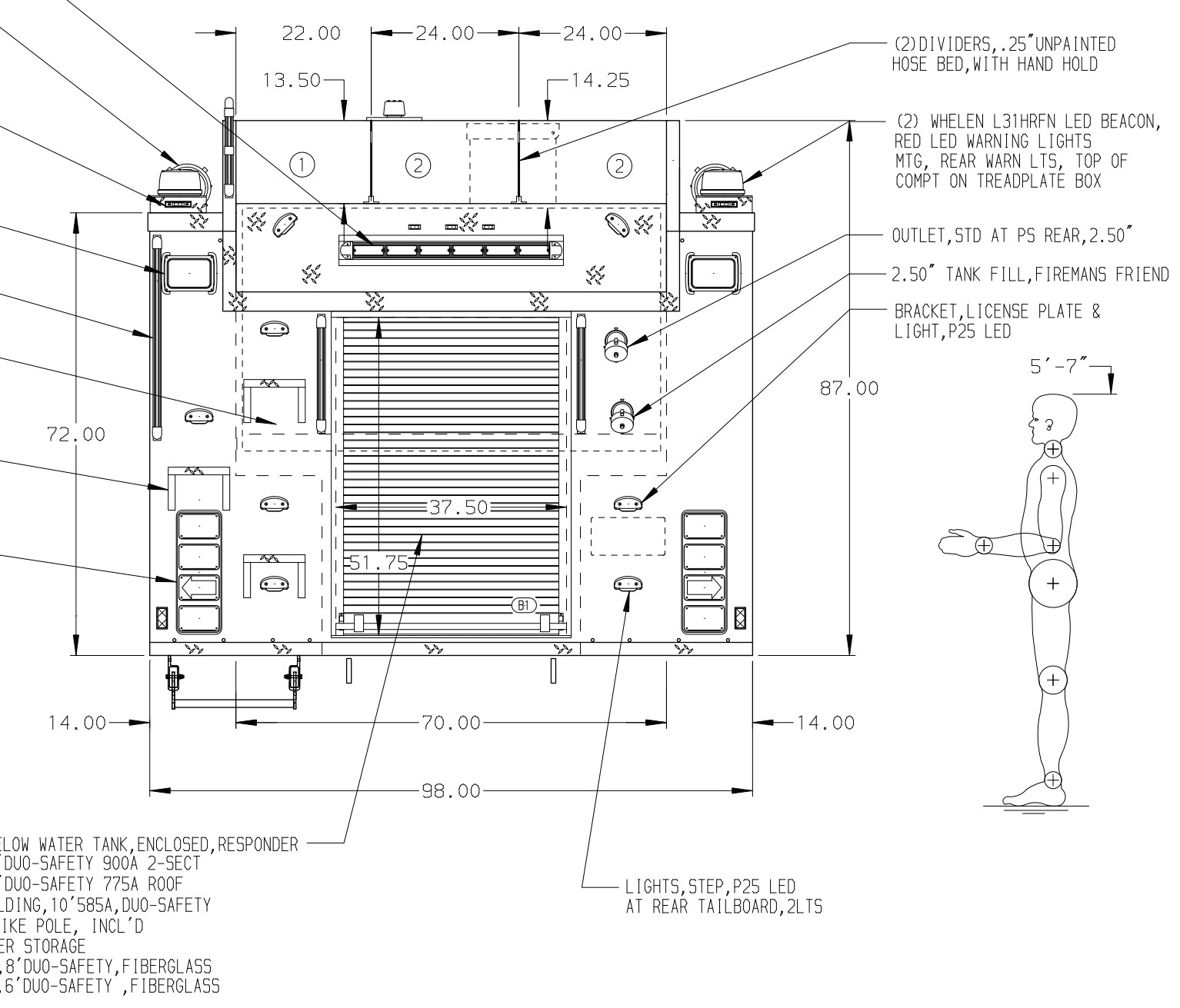


- HOSEBED CAPACITIES
- ① 400' OF 1.50" D.J. RUBBER HOSE
 - ② 1500' OF 2.50" D.J. POLYESTER HOSE

- WHELEN TAILS LED, 36.00" LONG, TACTILE TRAFFIC DIRECTING LIGHT RECESSED WITH STAINLESS STEEL TRIM
- (1) HARD SUCTION HOSE, 6.00" x 10.00', CLEAR CORRUGATED PVC, EACH SIDE TROUGHS, H.S.H. (1) EACH SIDE, ALUM
- LIGHTS, CLEARANCE/MARKER/ID, REAR, TRUCK-LITE 35200R LED, 7 LITS
- LIGHTS, REAR SCENE, FRC, SPA900-070, 15 DEG BRACKET
- HANDRAILS, REAR BULKHEAD
- WALL, REAR, SMOOTH ALUM
- STEPS, WEDGE AND INTERMEDIATE REAR OF BODY
- (2) WHELEN 600 SERIES L.E.D. STOP/TAIL LIGHTS
- (2) WHELEN 600 SERIES L.E.D. DIRECTIONAL LIGHTS
- (2) WHELEN 600 L.E.D. BACKUP LIGHTS
- (2) WHELEN 08L** L.E.D. LIGHTS, REAR ZONE LOWER
- ALL LIGHTS IN A WHELEN PLAST4 BEZEL



ALUMINUM BODY

NOTE
DIMENSIONS SHOWN ARE APPROXIMATE AND ARE SUBJECT TO MINOR DEVIATIONS AS MAY OCCUR OR BE NECESSARY IN CONSTRUCTION. MINOR DETAILS NOT SHOWN.

REV	DATE	BY	CH	CHASSIS DATA
20MAR19	JLA	AJA		MAKE
22JAN19	JAF	RW1		FL
				MODEL
				M2-106

<p>MANUFACTURING INC. BRADENTON, FLORIDA</p>		JOB NO.	33054
		SCALE	DATE
TITLE	1250-D-1000P, 20 FOAM, 147.5" BODY DS & PS FULL HEIGHT (2) SPEEDLAYS	DRAWN BY	JAF
FOR	TOWN OF MAIDSTONE MAIDSTONE, SASKATCHEWAN S0M 1M0, CANADA	CHECKED BY	RWI
DWG NO.	33054AD	SHEET SIZE	D
		SHEET NO.	1 OF 1