

**PUMPER BODY**

Long Aluminum 2nd Gen Pumper

**CHASSIS**

Enforcer Chassis

**CHASSIS AXLE, FRONT, CUSTOM**

18,000 Lb Dana Axle

**AXLE, REAR**

27,000 Lb Dana Axle

**ENGINE**

380 HP Cummins L9 Engine

**TRANSMISSION**

Allison 5th Gen, 3000 EVS P

**BUMPER**

19" Extended Stainless Steel

**CAB**

7010 Enforcer Cab

**BODY WATER TANK**

1000 Gallon Poly Water Tank

**COMPT, PUMPER, REAR**

30.75" FF RollUp Rear Compt

**COMPT, PUMPER, DRIVER SIDE**

161" RollUp Full Height Front & Rear FDLR

**COMPT, PUMPER PASS. SIDE**

161" RollUp Full Height Front & Rear FDLR

**FIRE SUPPRESSION PUMPHOUSE**

45" Control Zone Top Mount

**PUMP**

1500 GPM Waterous CSU

**CROSSLAYS, 1.50"**

1.50" Crosslays Not Required

**CROSSLAYS, 2.50"**

2.50" Crosslay Not Required

**SPEEDLAYS**

(2) 1.50" W/Tray Standard Capacity

(1) 2.50" W/Tray Standard Capacity

**GENERATOR**

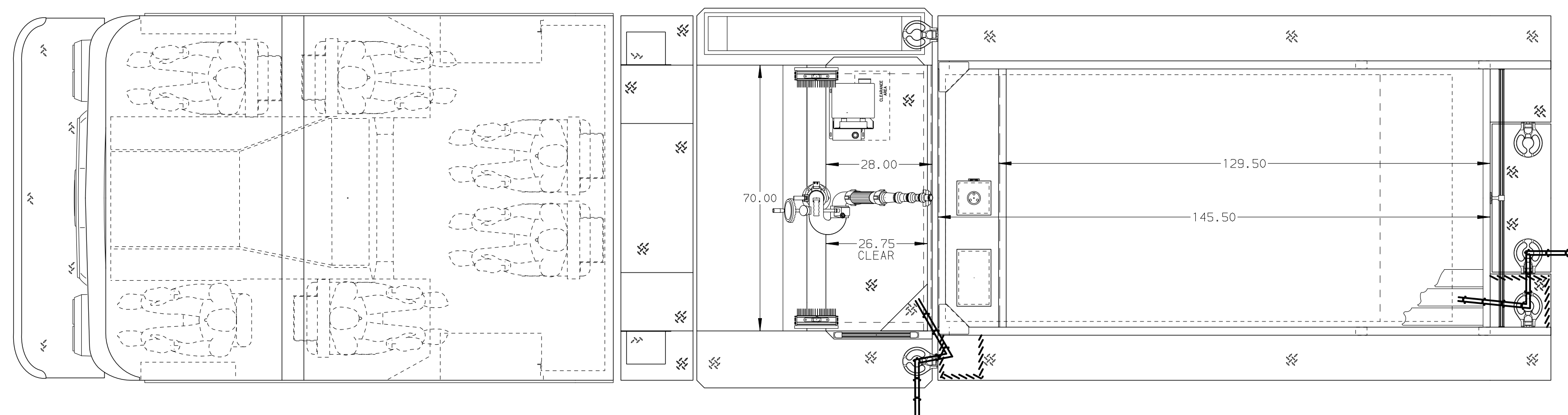
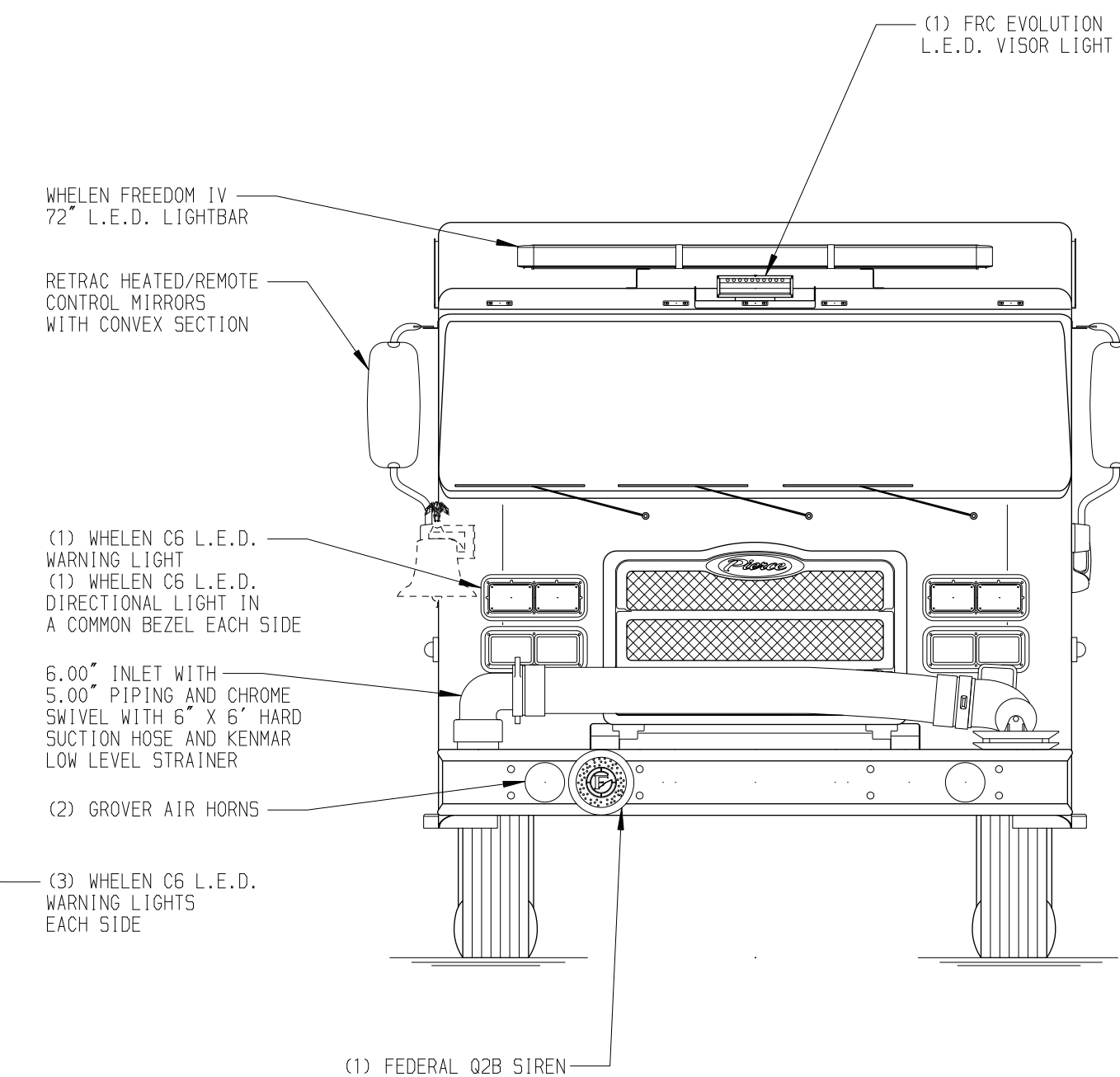
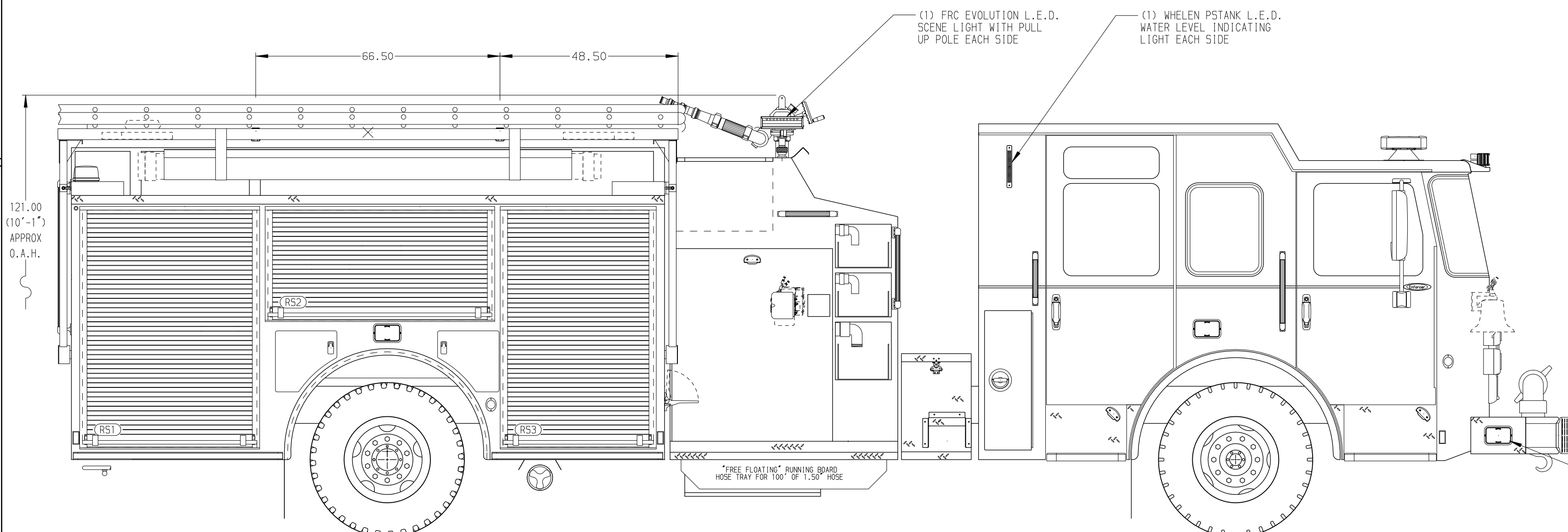
Generator Not Required

**Foam System**

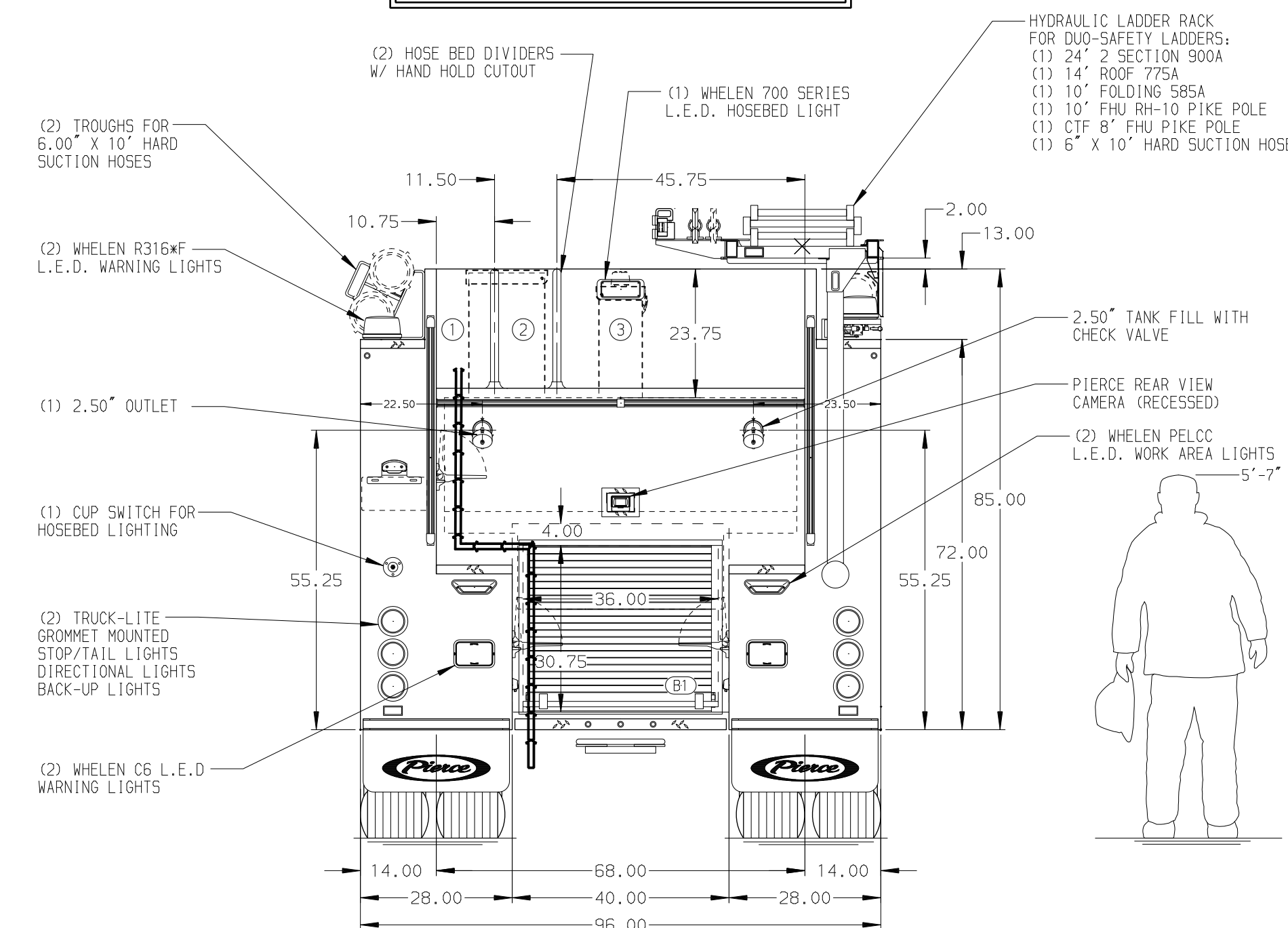
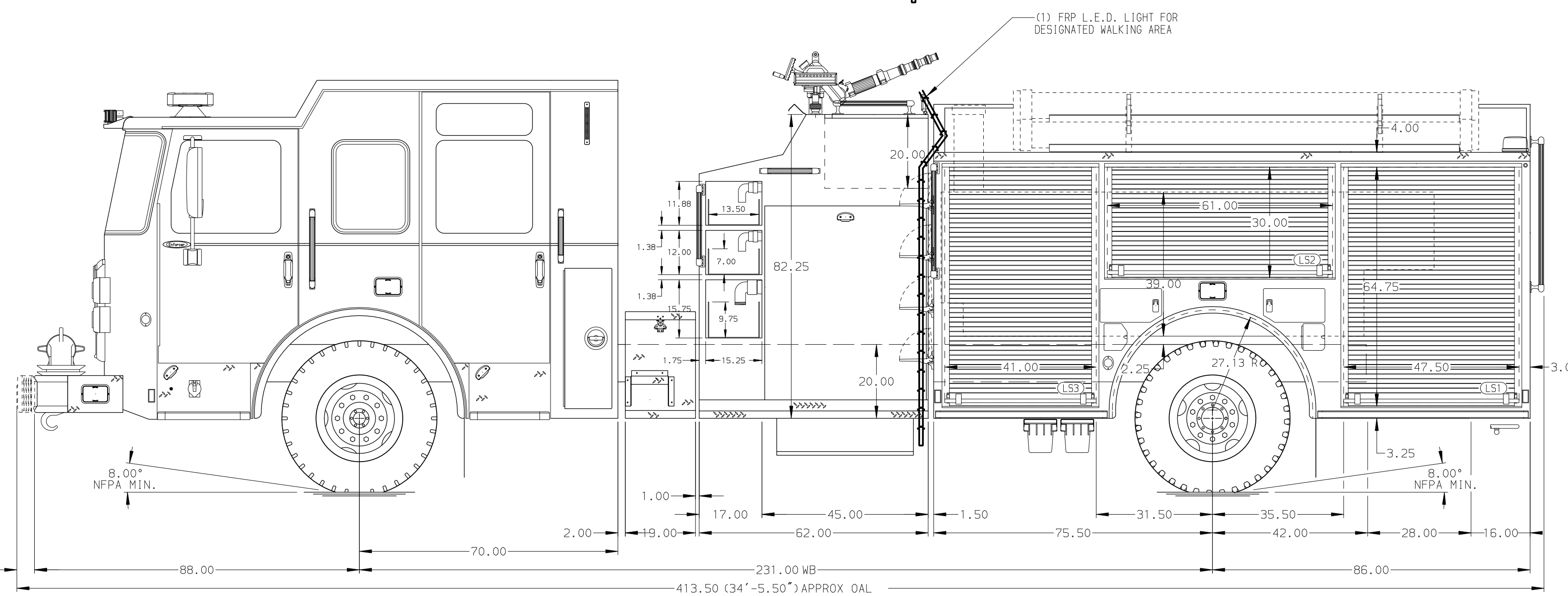
Husky 3 Single Agent Foam System

**Foam Cell**

25 Gallon Foam Cell, Not Reduced Water



HOSEBED CAPACITY	
<b>BED 1</b>	500' OF 2.50" D.J. POLY HOSE
<b>BED 2</b>	500' OF 2.50" D.J. POLY HOSE
<b>BED 3</b>	1200' OF 5.00" D.J. POLY HOSE



MAXIMUM O.A.H. - 122.00"

**NOTE**  
DIMENSIONS SHOWN ARE APPROXIMATE AND ARE SUBJECT TO MINOR DEVIATIONS AS MAY OCCUR OR BE NECESSARY IN CONSTRUCTION. MINOR DETAILS NOT SHOWN.

1. AUTOMATIC TIRE CHAINS
2. SHORELINE RECEPTACLE LOCATED IN THE DRIVER SIDE STEPPWELL
3. AIR INLET WITH DISCONNECT COUPLING IN THE DRIVER SIDE STEPPWELL
4. BATTERY CHARGER LOCATED BEHIND DRIVERS SEAT
5. BATTERY CHARGE INDICATOR LOCATED ON THE DRIVER SIDE SEAT RISER
6. SEVEN ADJUSTABLE SHELVES LOCATED PER SHOP ORDER
7. TWO FLOOR MOUNTED SLIDE-OUT TRAYS LOCATED PER SHOP ORDER
8. PARTITION BETWEEN COMPARTMENTS D1/R1 AND P1/R1
9. ONE SWING-OUT TOOLBOARD LOCATED PER SHOP ORDER
10. ONE 120V 6-PLACE RECEPTACLE LOCATED PER SHOP ORDER
11. ONE 120V DUPLEX RECEPTACLE LOCATED PER SHOP ORDER

REV	DATE	BY	CH	ENFORCER
1	10DEC18	COL	KBO	PIERCE
2	07NOV18	COL	KBO	PIERCE

<b>Pierce MANUFACTURING INC.</b>		JOB NO.	33088
TITLE		SCALE	DATE
Pierce Pumper Approval Drawing		1:24	
FOR		DRAWN BY	170CT18
Ashippun Fire Department		CHECKED BY	190CT18
DWG NO.		SHEET SIZE	SHEET NO.
33088AD		D	1 OF 1