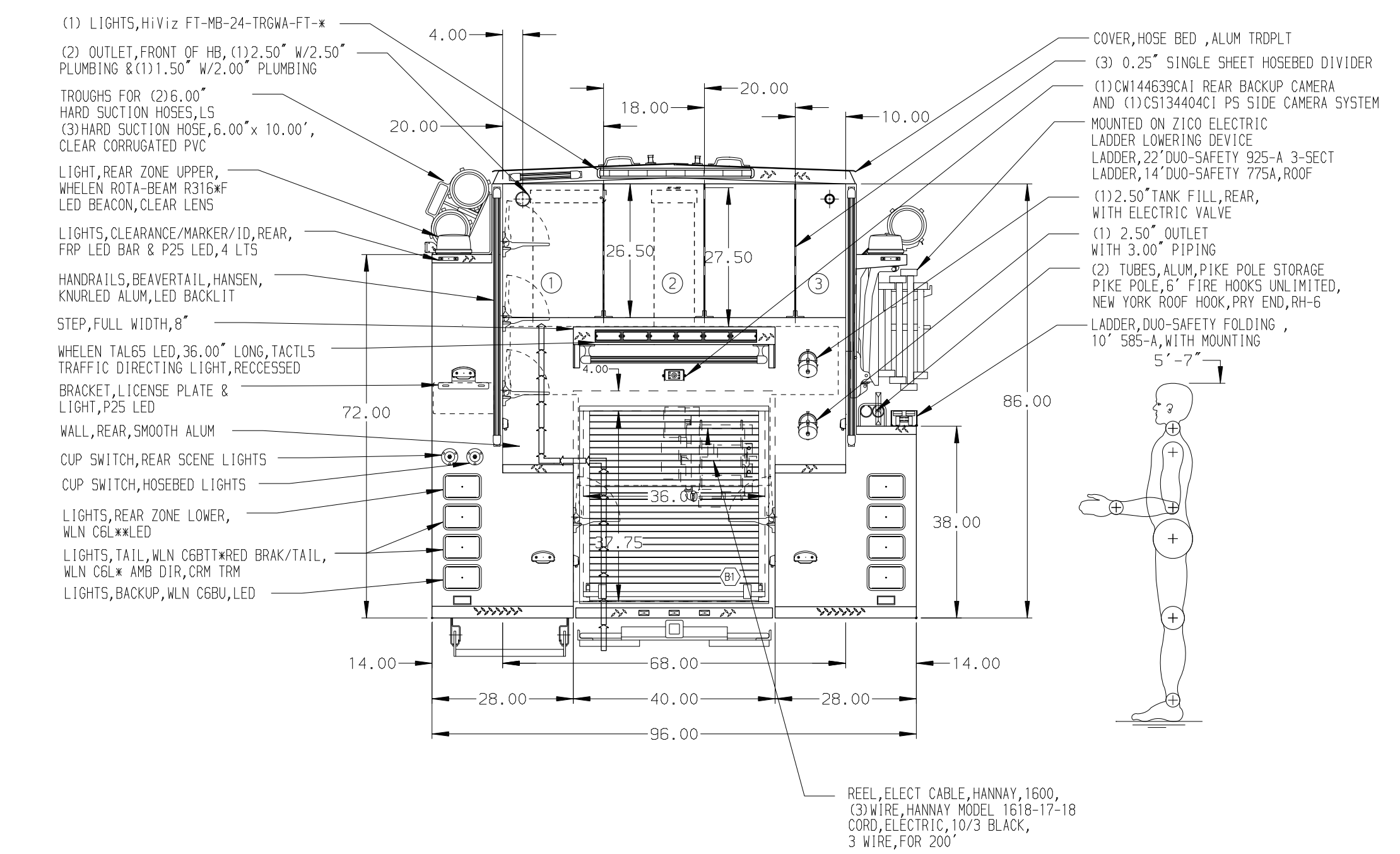
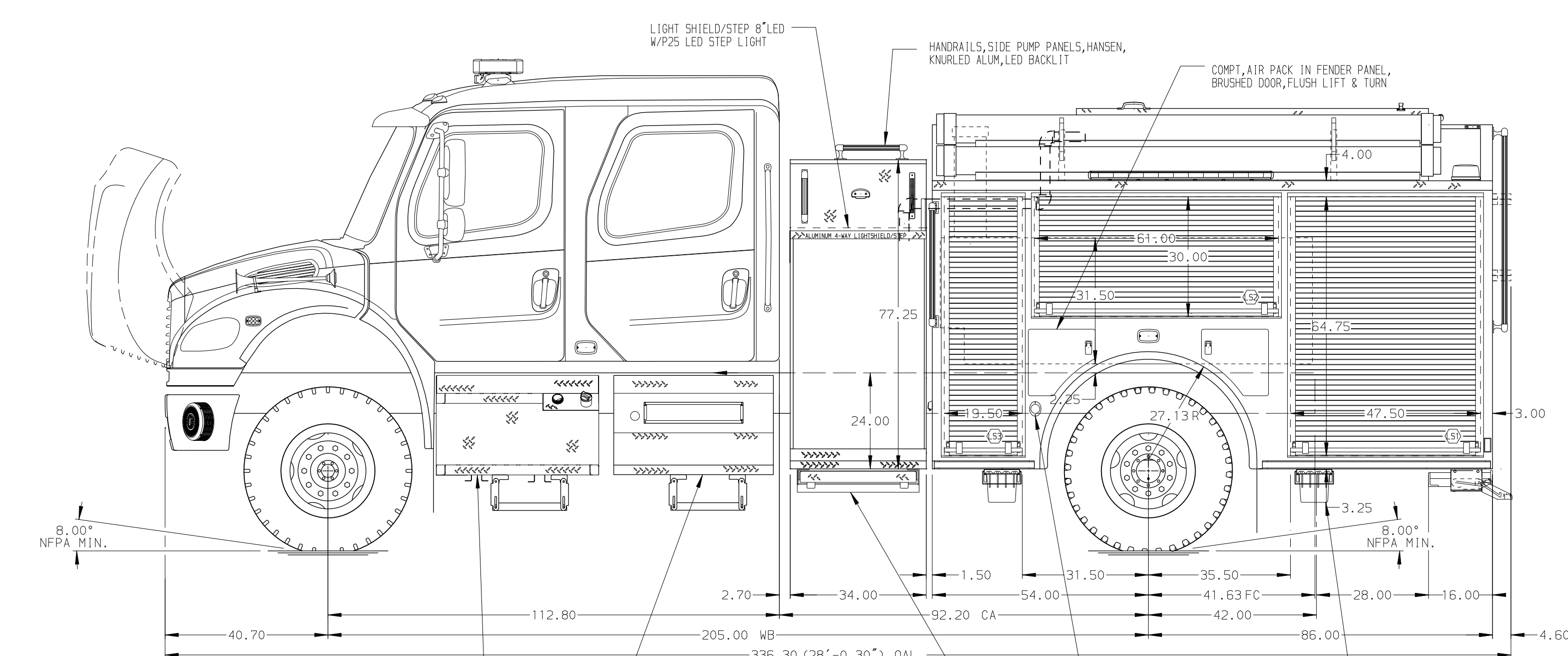


- HOSEBED CAPACITIES**
- ① 700' OF 5.00" D.J. POLY HOSE
 - ② 300' OF 3.00" D.J. POLY HOSE
 - ③ 300' OF 1.75" D.J. POLY HOSE



ALUMINUM BODY

NOTE
DIMENSIONS SHOWN ARE APPROXIMATE AND ARE SUBJECT TO MINOR DEVIATIONS AS MAY OCCUR OR BE NECESSARY IN CONSTRUCTION. MINOR DETAILS NOT SHOWN.

| | | | |
|--|--|------------|-----------|
| | | JOB NO. | 33091 |
| | | SCALE | DATE |
| TITLE 1000-D-500P, 30 FOAM, 140" BOD, D5 FULL HGT, PS LOW BODY SKIRT HEIGHT 24", 34" SIDE CONTROL | | DRAWN BY | JLA |
| FOR RIDGE FIRE COMPANY SPRING CITY, PENNSYLVANIA | | CHECKED BY | RWI |
| DWG NO. 33091AD | | SHEET SIZE | SHEET NO. |
| | | D | 1 OF 1 |

| REV | DATE | BY | CH | CHASSIS DATA |
|---------|------|-----|----|------------------|
| 29APR19 | JLA | AJA | | MAKE |
| 22MAR19 | JLA | AJA | | FL |
| 25JAN19 | JLA | RWI | | MODEL M2-106 4X4 |