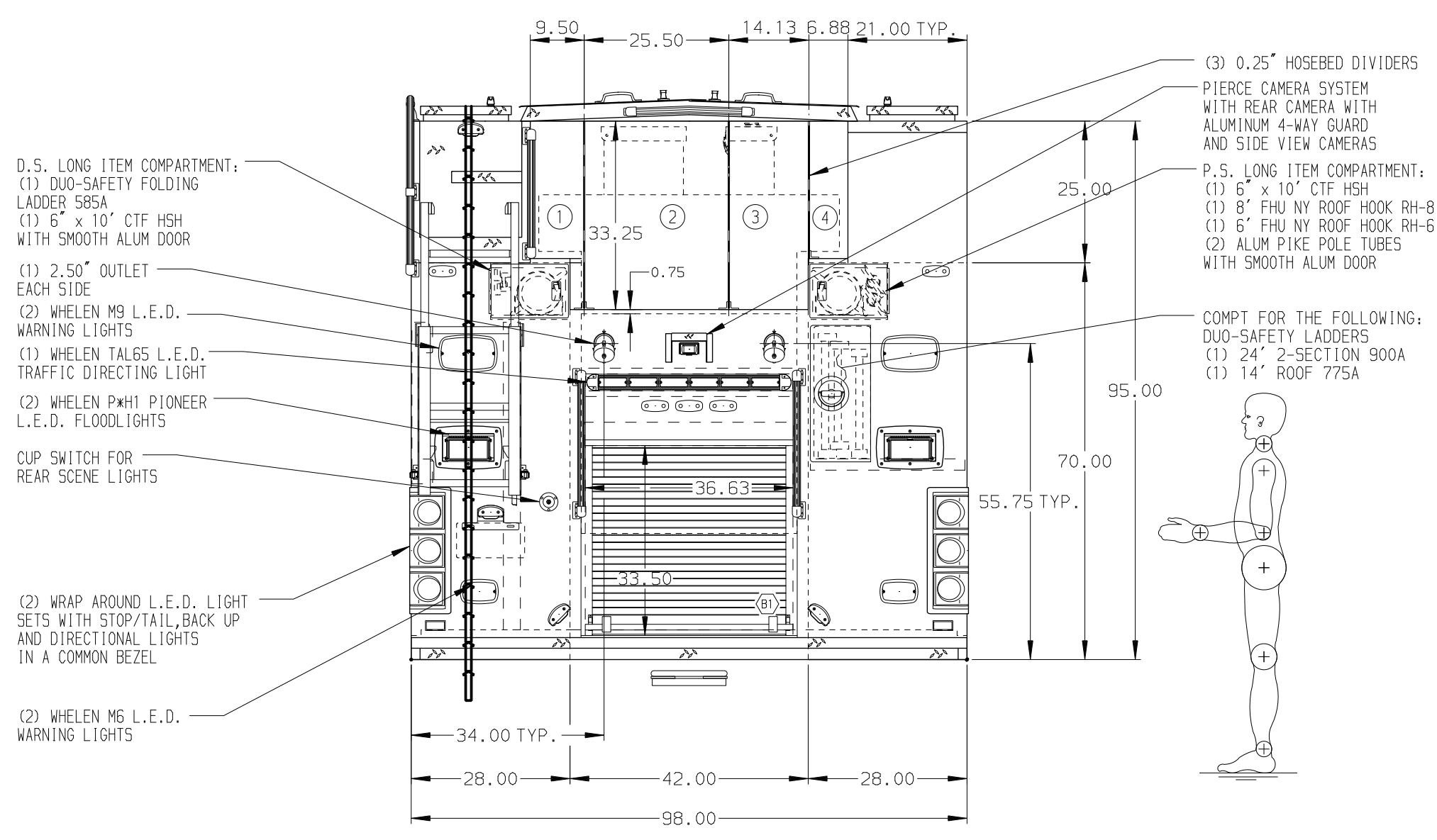
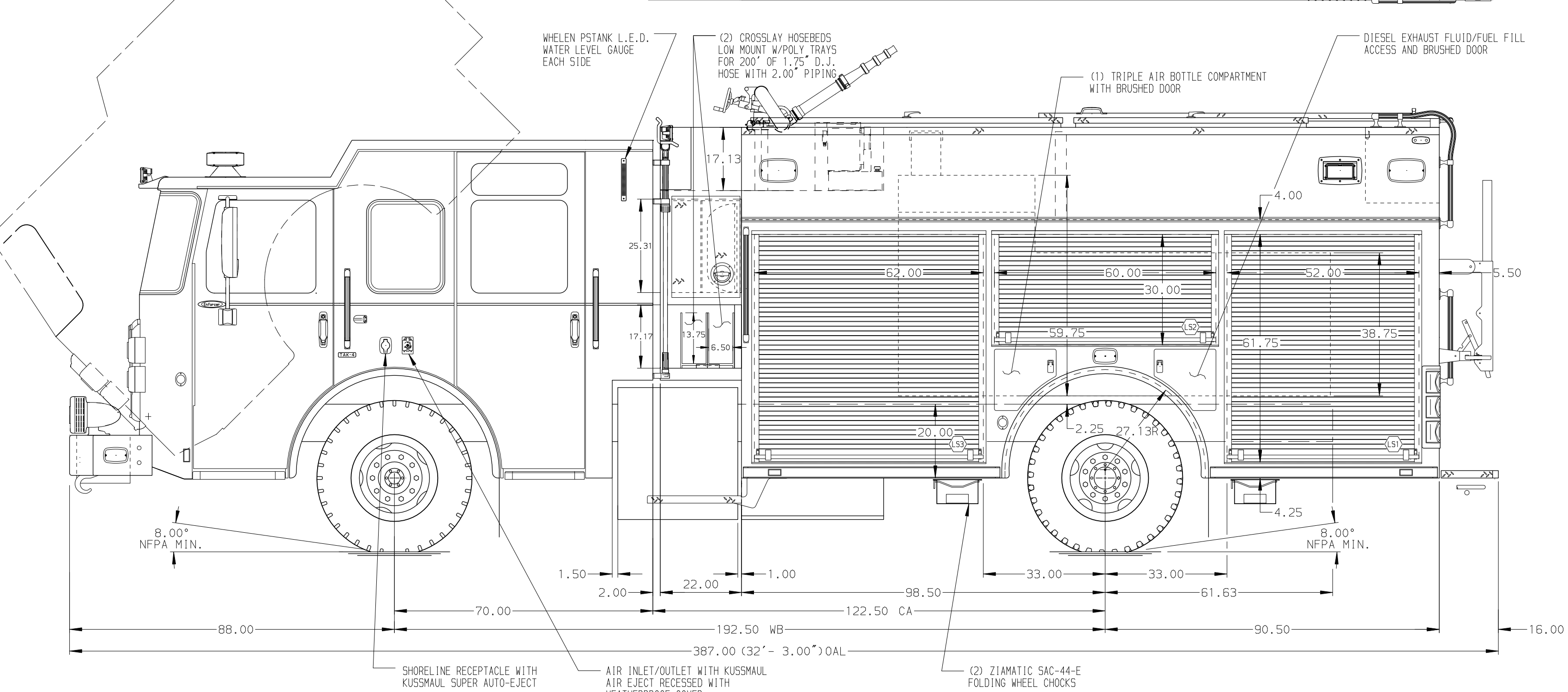


- HOSEBED CAPACITIES
- 1 300' OF 2.50" D.J. HOSE
 - 2 800' OF 5.00" D.J. HOSE
 - 3 700' OF 3.00" D.J. HOSE
 - 4 300' OF 1.75" D.J. HOSE



ALUMINUM BODY SIDE ROLL AND FRONTAL IMPACT PROTECTION

NOTE

DIMENSIONS SHOWN ARE APPROXIMATE AND ARE SUBJECT TO MINOR DEVIATIONS AS MAY OCCUR OR BE NECESSARY IN CONSTRUCTION. MINOR DETAILS NOT SHOWN.

1. ONSPOT AUTOMATIC TIRE CHAINS TO BE PROVIDED AT REAR

2. KUSSMAUL BATTERY CHARGER LOCATED BEHIND DRIVER'S SEAT

3. BATTERY CHARGER INDICATOR LOCATED AT DRIVER'S SIDE STEP AREA

4. ONE FULL WIDTH/DEPTH ADJUSTABLE SHELF IN COMPARTMENT L51, L52, L53, R51, R52, THREE IN R53

5. ONE ADJUSTABLE SLIDE-OUT TRAY IN COMPARTMENT L51, L53 & R51

6. ONE ADJUSTABLE TILTING SLIDE-OUT TRAY IN COMPARTMENT L51 & L52

7. ONE FLOOR MOUNTED SLIDE-OUT TRAY IN COMPARTMENT R51

8. ZIAMATIC SOBA HOLDER BRACKET LOCATED IN CAB

9. ONE VERTICAL BOLT-IN PARTITION BETWEEN COMPARTMENTS L51/B1 & R51/B1

10. ONE VERTICAL PARTITION IN COMPARTMENT R53

11. 5-SLOT AIR BAG RACK IN FORWARD HATCH OF LH2

12. (2) POLY TRAYS SHIPPED LOOSE

13. PEGBOARD ON TRAY/SHELF FLOOR IN COMPARTMENT L52

14. ONE 15/20A 120V RECEPTACLE IN COMPARTMENT L51, R51 & B1

REV	DATE	BY	CH	ENFORCER
02APR19	AMI	EFA		CHASSIS DATA
11MAR19	AMI	MSA		MAKE
08MAR19	AMI	EFA		PIERCE
25JAN19	AMI	WKL		MODEL

TITLE	1500-D-770P, 750G WATER W/20G FOAM CELL, 189" PUC
FOR	(2) XLAYS, LDDRS BTWN TNK & SDSHT, DELUGE
DWG NO.	33110AD

JOB NO.	33110
SCALE	1:24
DATE	
DRAWN BY	AMI
CHECKED BY	WKL
SHEET SIZE	D
SHEET NO.	1 OF 1

DATE	18JAN19
DATE	21JAN19



1500-D-770P, 750G WATER W/20G FOAM CELL, 189" PUC
(2) XLAYS, LDDRS BTWN TNK & SDSHT, DELUGE

BURLINGTON FIRE DEPARTMENT
BURLINGTON, IOWA

33110AD