

**PUMPER BODY**

Long Stainless Steel 2nd Gen Pumper

**CHASSIS**

Enforcer Chassis

**CHASSIS AXLE, FRONT, CUSTOM**

18,000 Lb Dana Axle

**AXLE, REAR**

27,000 Lb Meritor Axle

**ENGINE**

450 HP Cummins L9 Engine

**TRANSMISSION**

Allison 5th Gen, 3000 EVS P

**BUMPER**

22" Extended Painted Steel

**CAB**

6010 Enforcer Cab

**BODY**

**WATER TANK**

720 Gallon New York Style Water Tank

**COMPT, PUMPER, REAR**

30.75" FF RollUp Rear Compt

**COMPT, PUMPER, LEFT SIDE**

161" Lap Full Height Front & Rear FDLER

**COMPT, PUMPER, RIGHT SIDE**

161" Lap Full Height & Depth Front, Full Height Rear FDLER

**FIRE SUPPRESSION PUMPHOUSE**

54" Control Zone Side Mount

**PUMP**

1500 GPM Hale QMAX

**CROSSLAYS, 1.50"**

(2) 1.50" Special Capacity

**CROSSLAYS, 2.50"**

(1) 2.50" Standard Capacity

**SPEEDLAYS**

Speedlays Not Required

**GENERATOR**

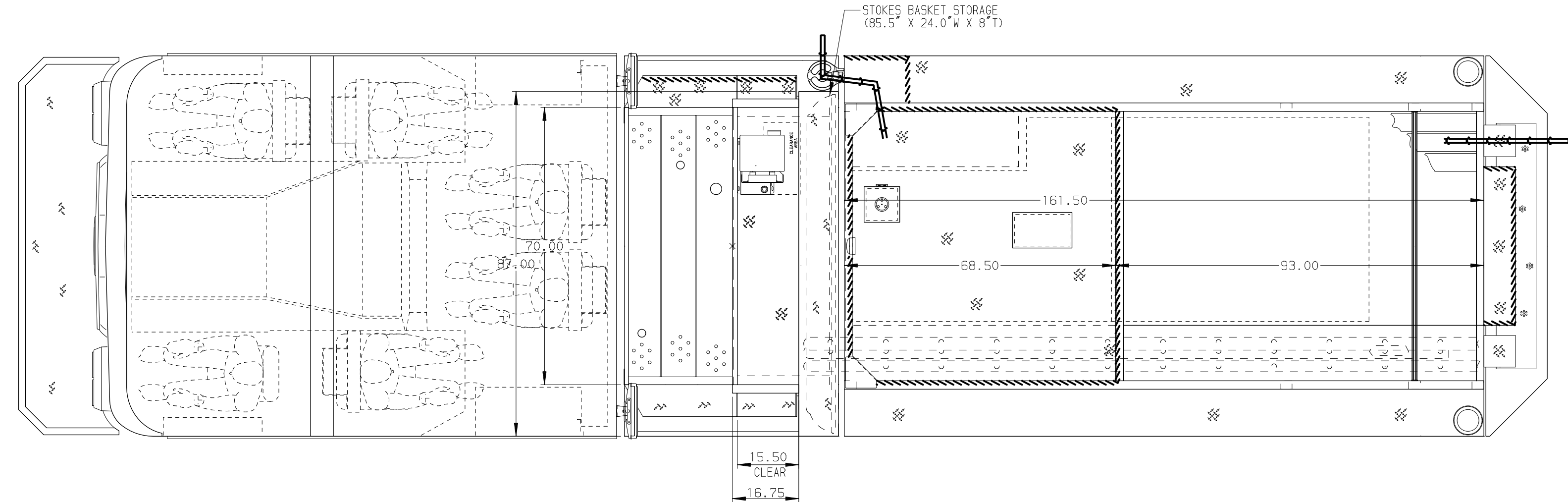
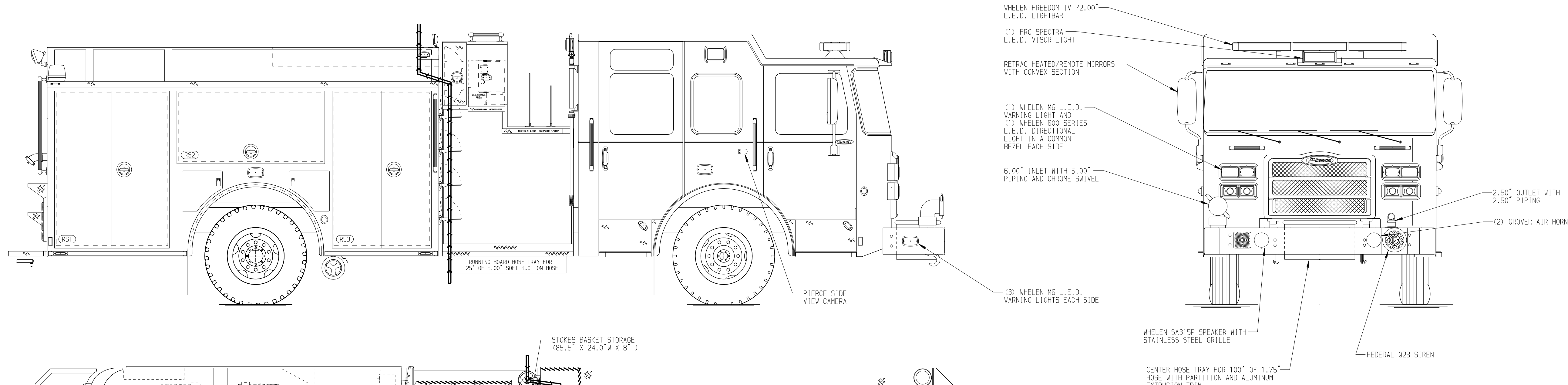
Generator Not Required

**Foam System**

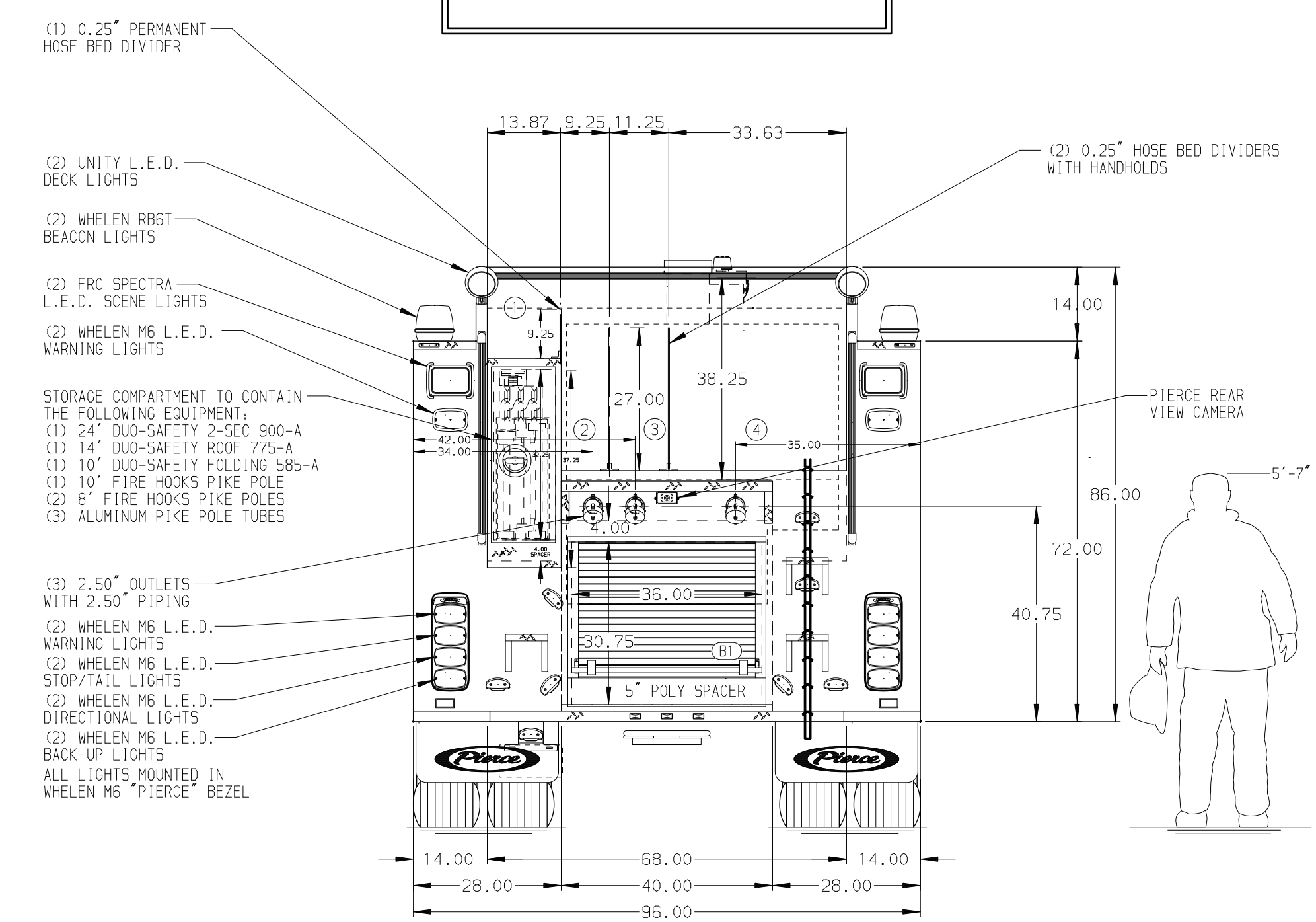
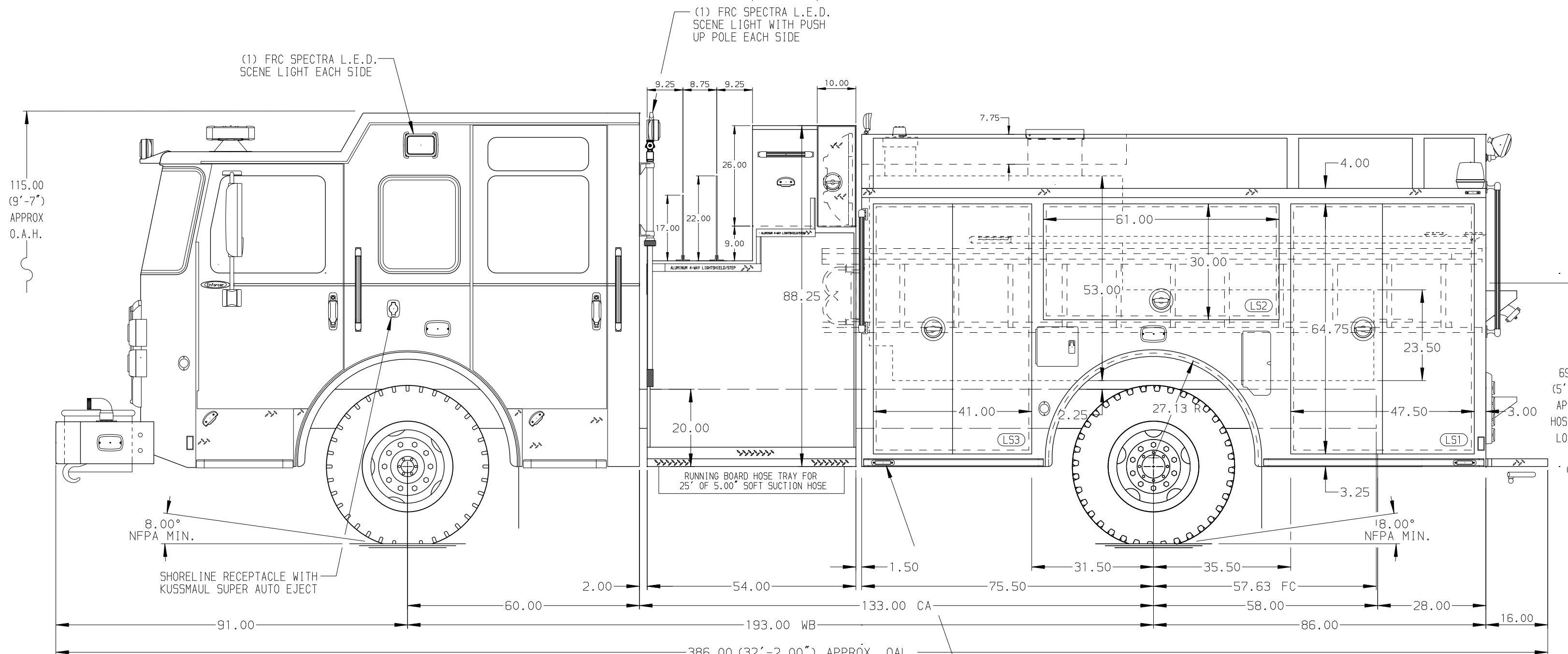
Husky 3 Single Agent Foam System

**Foam Cell**

30 Gallon Foam Cell, Reduced Water



HOSEBED CAPACITY	
BED 1	300' OF 1.75" D.J. POLY HOSE
BED 2	300' OF 2.50" D.J. POLY HOSE
BED 3	500' OF 3.00" D.J. POLY HOSE
BED 4	1000' OF 5.00" D.J. POLY HOSE



**NOTE**  
DIMENSIONS SHOWN ARE APPROXIMATE AND ARE SUBJECT TO MINOR DEVIATIONS AS MAY OCCUR OR BE NECESSARY IN CONSTRUCTION. MINOR DETAILS NOT SHOWN.

- AIR INLET/OUTLET WITH DISCONNECT FITTING LOCATED ON DRIVER SIDE SEAT RISER
- AIR OUTLET WITH SHUT OFF VALVE LOCATED ON DRIVER SIDE PUMP PANEL
- BATTERY CHARGER LOCATED IN COMPARTMENT D3
- BATTERY CHARGER INDICATOR LOCATED ON DRIVER SIDE SEAT RISER
- SIX ADJUSTABLE FULL WIDTH/DEPTH SHELVES LOCATED PER SHOP ORDER
- ONE SWING-OUT TOOL GRID SYSTEM LOCATED PER SHOP ORDER
- WATER HEATER LOCATED PER SHOP ORDER

REV	DATE	BY	CH	ENFORCER
1	19NOV18	COL	KBO	PIERCE
2	26OCT18	COL	KBO	MODEL

		JOB NO.	33123
		SCALE	DATE
TITLE	PIERCE PUMPER APPROVAL DRAWING	DRAWN BY	COL
FOR	BRIGHTON FIRE DISTRICT	CHECKED BY	KBO
DWG NO.	33123AD	SHEET SIZE	SHEET NO.
		D	1 OF 1