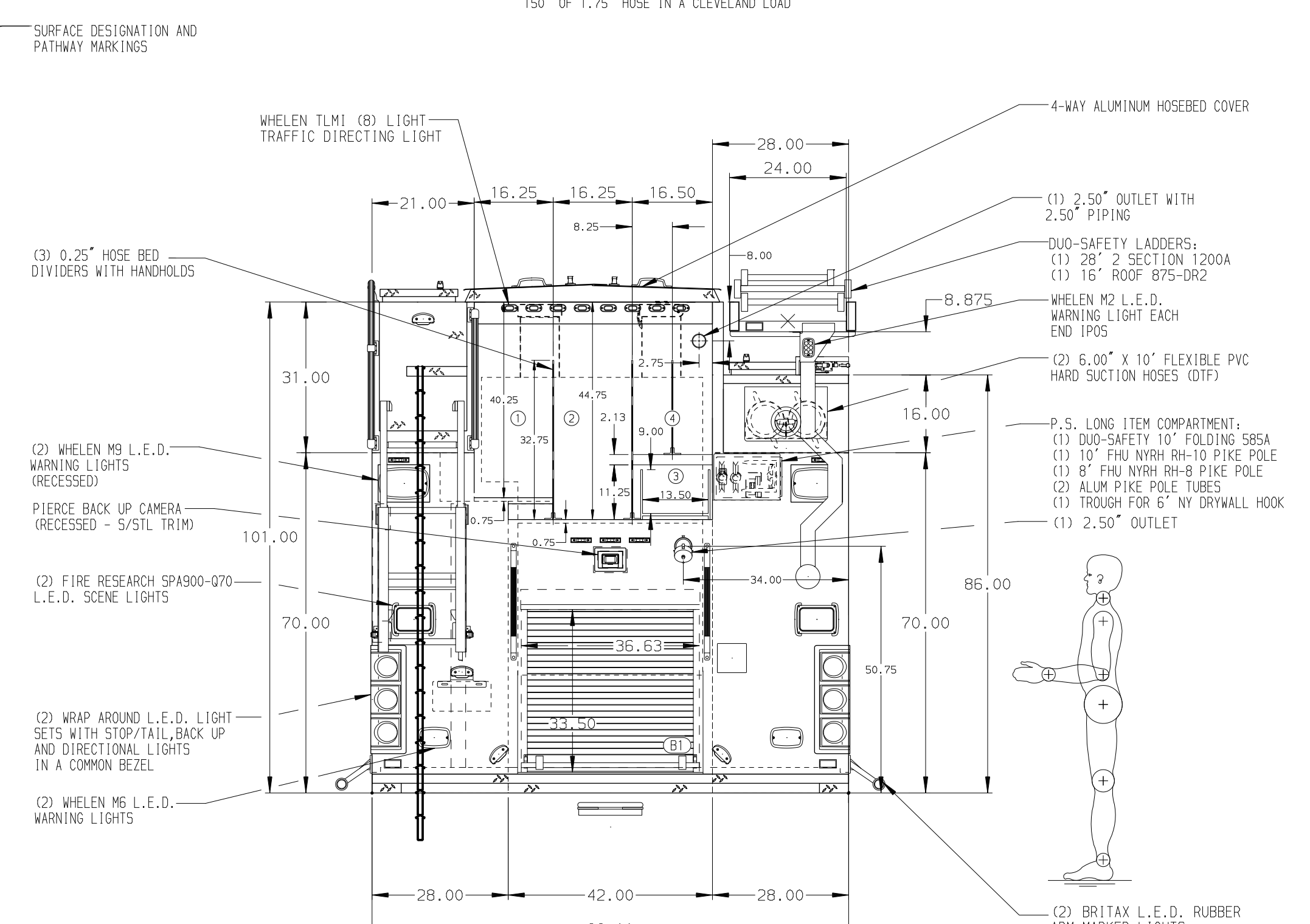


- HOSEBED CAPACITIES**
- ① 500' OF 5.00" D.J. POLY HOSE
  - ② 500' OF 5.00" D.J. POLY HOSE
  - ③ 200' OF 2.50" HOSE IN A POLY TRAY
  - ④ 200' OF 2.50" HOSE WITH 150' OF 1.75" HOSE IN A CLEVELAND LOAD



ALUMINUM BODY      MAXIMUM O.A.H. 135.00"

**NOTE**  
DIMENSIONS SHOWN ARE APPROXIMATE AND ARE SUBJECT TO MINOR DEVIATIONS AS MAY OCCUR OR BE NECESSARY IN CONSTRUCTION. MINOR DETAILS NOT SHOWN.

1. BATTERY CHARGER/CONVERTER LOCATED IN L53
2. BATTERY CHARGER INDICATOR LOCATED ON DRIVER'S SEAT RISER
3. 5/8\"/>

12. (1) LITTLE GIANT REVOLUTION XE 12017-MODEL 17 LADDER IN RS3
13. ONE VERTICAL PARTITION IN RS1
14. STORAGE BIN WITH STRAPS FOR (2) FIRE EXTINGUISHERS IN RS1
15. (1) 120V NEMA DUPLEX RECEPTACLE IN COMPARTMENT L51 AND RS3
16. (1) 120V NEMA DUPLEX RECEPTACLE IN EACH REAR FACING EMS COMPARTMENT
17. ONE 0.30\"/>

REV	DATE	BY	CH	QUANTUM
18APR19	JRO	MSA	MAKE	
22MAR19	JRO	MSA	PIERCE	
22JAN19	LME	AZA	MODEL	

		JOB NO.	33152
		SCALE	1:24
<b>TITLE</b> 1500-D-800P 750 GAL OF WATER W/ 50 GAL FOAM CELL 189" PUC RESCUE, (4) X-LAYS, HYDRAULIC LADDER RACK		DATE	
		FOR	CITY OF WAUKESHA FIRE DEPARTMENT WAUKESHA, WISCONSIN
<b>DWG NO.</b> 33152AD		DRAWN BY	LME
		CHECKED BY	AZA
		SHEET SIZE	SHEET NO.
		D	1 OF 1