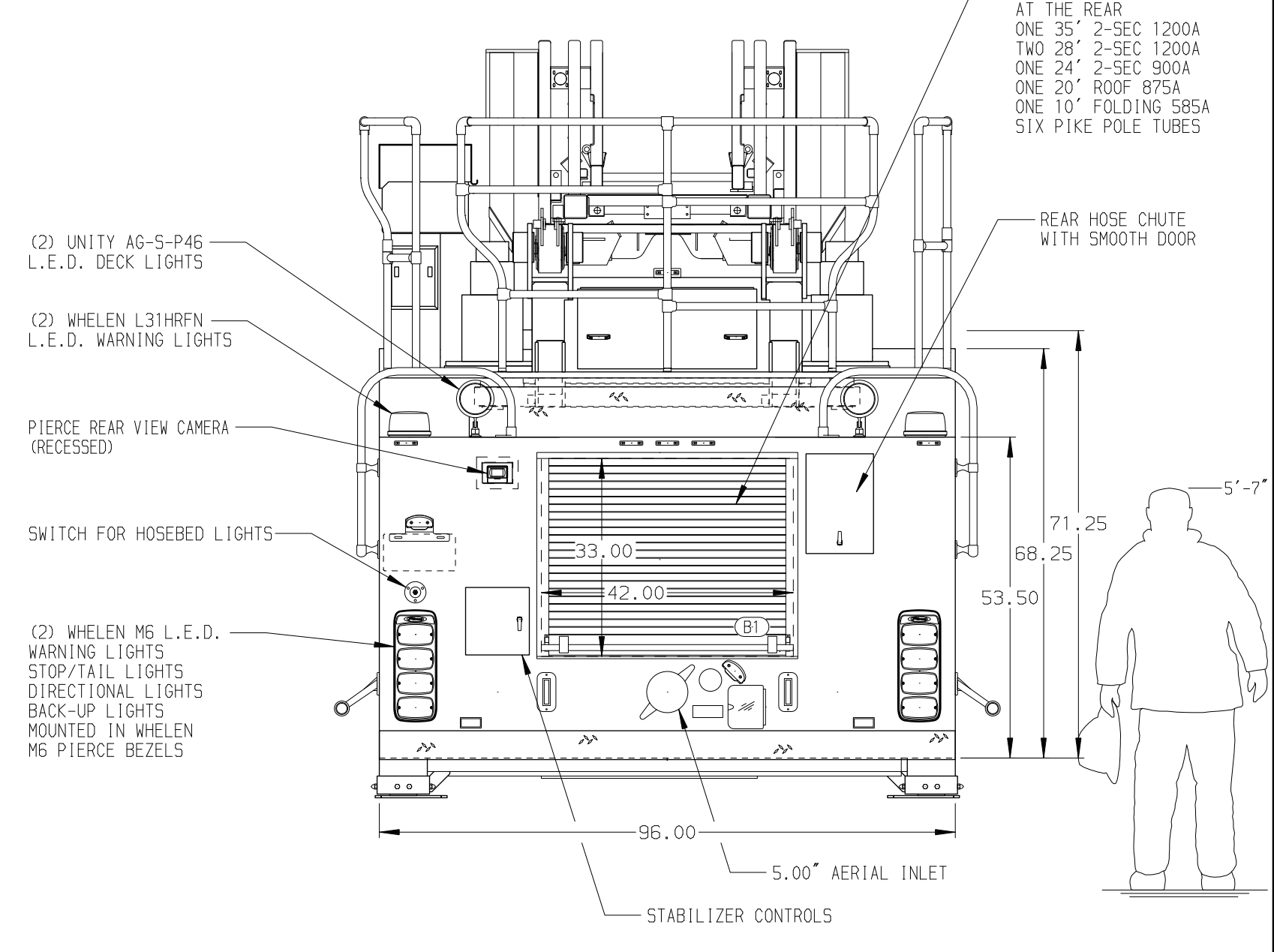
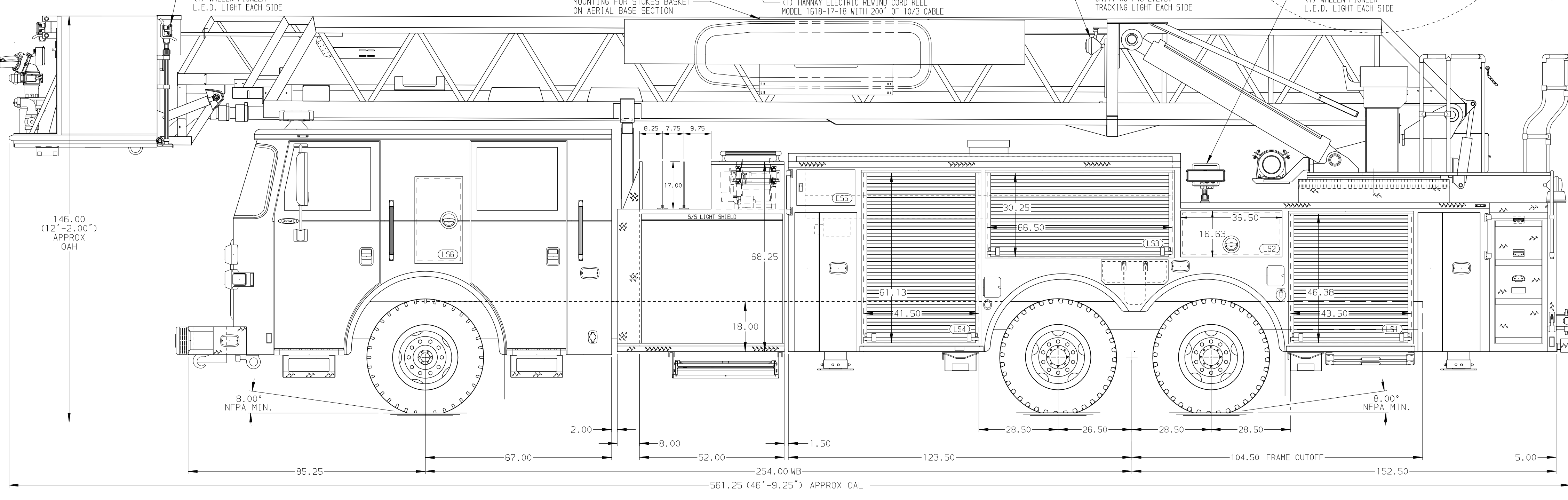


BODY	WATER TANK
100' Steel Platform Alum Body	300 Gallon PAP Notched Poly Water Tank
COMPT, LEFT SIDE FRONT	Foam System
FH/FD RollUp Forward w/o Chute	Foam System Not Required
COMPT, LEFT SIDE REAR	Foam Cell
FH/FD RollUp and Lift-up Rearward	Foam Cell Not Required
COMPT, RIGHT SIDE FRONT	
Full Height RollUp Forward	
COMPT, RIGHT SIDE REAR	
Full Height RollUp and Liftup Rearward	



CHASSIS	CAB	AXLE, FRONT, CUSTOM	TRANSMISSION	PUMPHOUSE	CROSSLAYS, 1.50"	SPEEDLAYS
Arrow XT Chassis 565 HP Cummins X15 Engine	6700 Arrow XT Cab 16" Extended Stainless Steel BUMPER	23,000 Lb Dana Axle 54,000 Lb Meritor Axle	Allison 5th Gen, 4000 EVS P	52" Control Zone Side Mount PUMP 2000 GPM Hale QMAX-200	(2) 1.50" Standard Capacity DEADLAY 200' of 2.50" D.J. Hose	Speedlays Not Required Harrison 8kW MCR Hydraulic GENERATOR

NOTE
DIMENSIONS SHOWN ARE APPROXIMATE AND ARE SUBJECT TO MINOR DEVIATIONS AS MAY OCCUR OR BE NECESSARY IN CONSTRUCTION. MINOR DETAILS NOT SHOWN.

- ONE 1.50 OUTLET WITH 2.00 PIPING AND SWIVEL LOCATED ON THE RIGHT SIDE OF THE FRONT BUMPER
- SHOULDER RECEPTACLE WITH KUSSMALL SUPER AUTO-EJECT LOCATED BEHIND THE LEFT SIDE CREW CAB DOOR
- BATTERY CHARGER LOCATED IN COMPARTMENT PER SHOP ORDER
- BATTERY CHARGE INDICATOR LOCATED NEAR DRIVER SEAT RISER WITH BRACKET
- FIVE ADJUSTABLE SHELVES IN COMPARTMENTS PER SHOP ORDER
- TWO ADJUSTABLE TILTING SLIDE-OUT TRAYS IN COMPARTMENTS PER SHOP ORDER
- THREE FLOOR MOUNTED SLIDE-OUT TRAYS IN COMPARTMENTS PER SHOP ORDER
- TWO SLIDE-OUT ALUMINUM TOOL BOARDS IN COMPARTMENTS PER SHOP ORDER
- CIRCUIT BREAKER PANEL MOUNTED IN COMPARTMENT PER SHOP ORDER
10. 3.00" RAISED AERIAL PEDESTAL
11. 3-in-1 LYFCOMBO BRACKETS AT AERIAL BASKET

Pierce MANUFACTURING INC.		JOB NO.	33199		
		SCALE	1:24		
		DATE			
CHASSIS DATA	TITLE	100 AERIAL PLATFORM & BODY ASSEMBLY (PAP100A)	DRAWN BY	TKA	15NOV18
MAKE	FOR	GREENWOOD COUNTY FIRE SERVICE	CHECKED BY	GRM	16NOV18
MODEL	DWG NO.	33199AD	SHEET SIZE	D	SHEET NO.
REV	DATE	BY	CH		1 OF 1