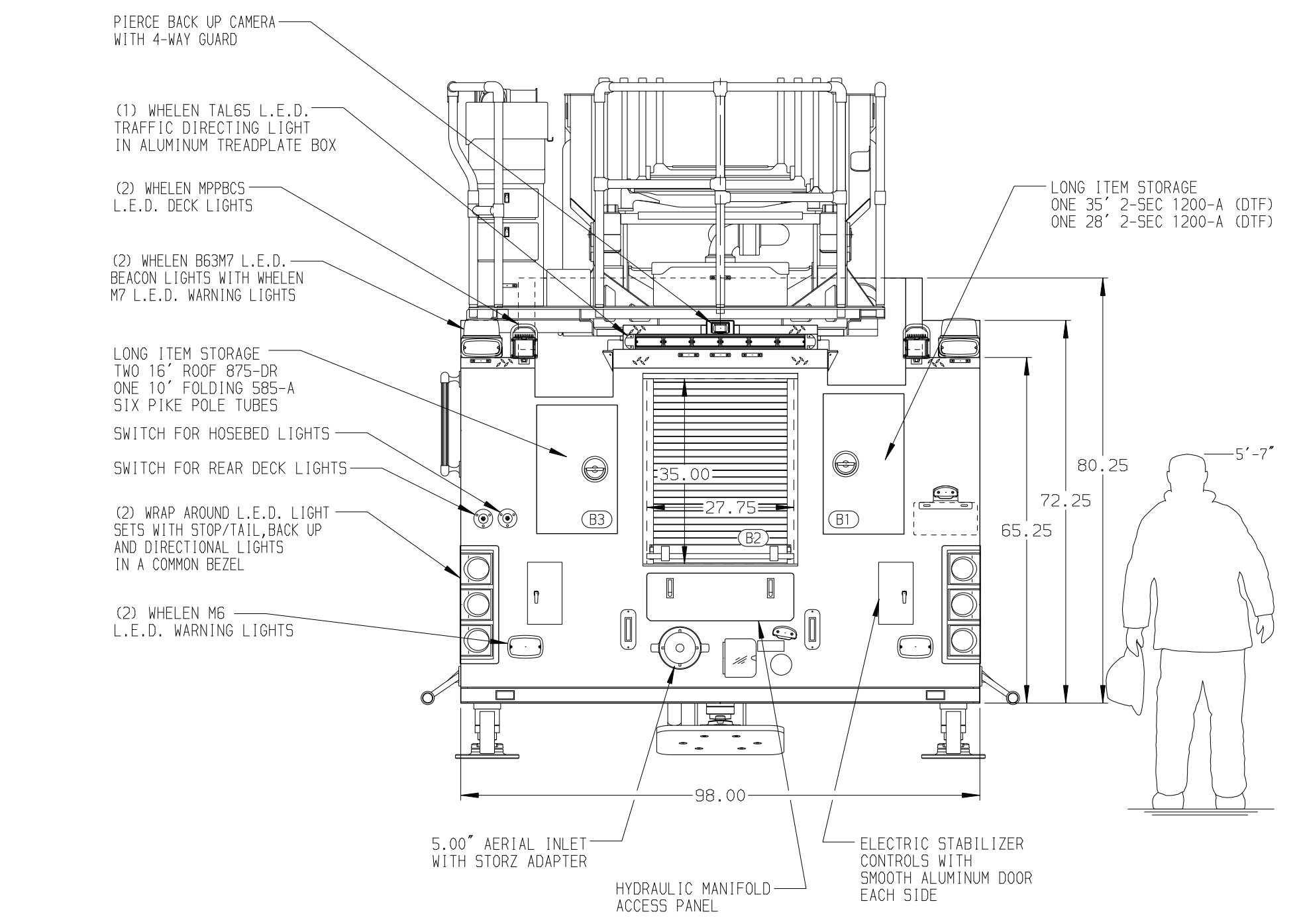
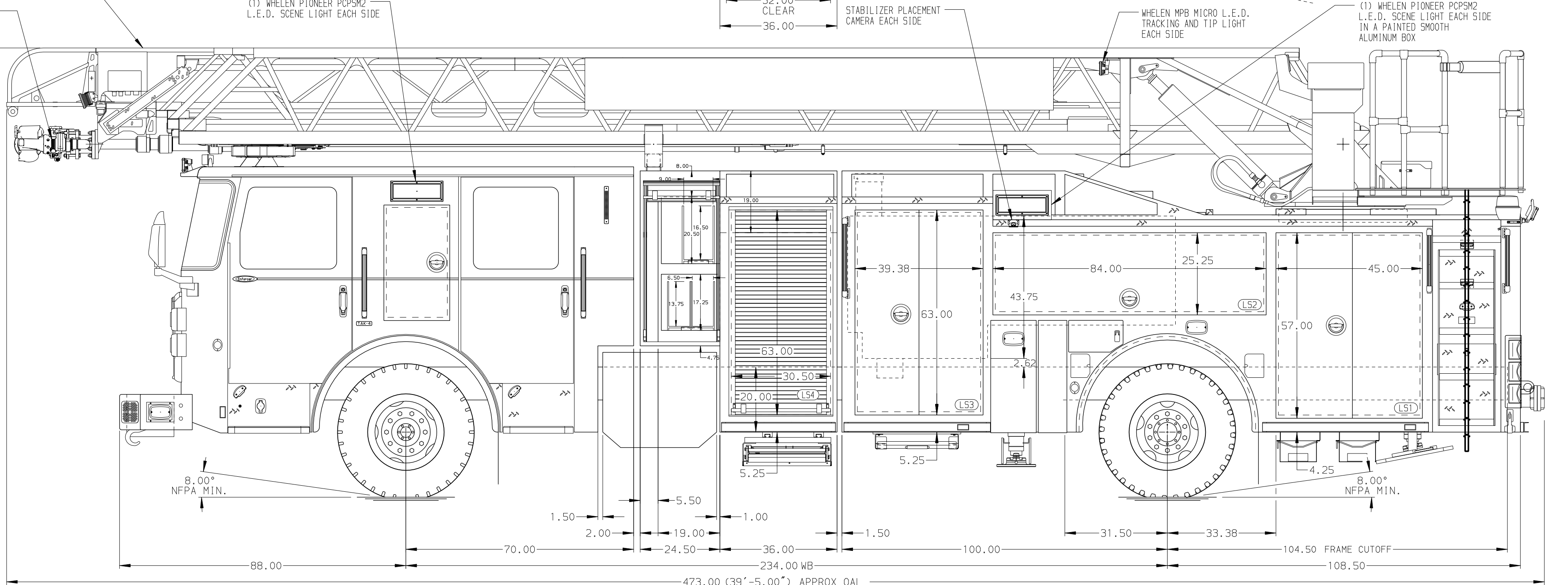


<b>BODY</b> 107' ASL Aluminum Body PUC <b>COMPT, LEFT SIDE FRONT</b> Full Height Lap Forward <b>COMPT, LEFT SIDE REAR</b> Full Height Lap Rearward <b>COMPT, RIGHT SIDE FRONT</b> Full Height Lap Forward <b>COMPT, RIGHT SIDE REAR</b> Full Height Lap Rearward	<b>WATER TANK</b> 500 Gallon Poly Water Tank <b>Foam System</b> Foam System Not Required <b>Foam Cell</b> Foam Cell Not Required
---------------------------------------------------------------------------------------------------------------------------------------------------------------------------------------------------------------------------------------------------------------------------------------------	-------------------------------------------------------------------------------------------------------------------------------------------------



<b>CHASSIS</b> Enforcer Chassis, PUC 450 HP Cummins L9 Engine	<b>CAB</b> 7000 Enforcer Cab, PUC 19" Extended Painted Steel	<b>AXLE, FRONT, CUSTOM</b> 22,800 Lb TAK-4 Axle <b>AXLE, REAR</b> 33,500 Lb Meritor Axle	<b>TRANSMISSION</b> Allison 5th Gen, 3000 EV5 P	<b>PUMPHOUSE</b> Control Zone, PAL/PAP PUC PUMP 1500 GPM Pierce PUC	<b>CROSSLAYS, 1.50"</b> (2) 1.50", Full Width Trays, 200' <b>CROSSLAYS, 2.50"</b> (1) 2.50", Full Width Tray, 200'	<b>SPEEDLAYS</b> Speedlays Not Required <b>GENERATOR</b> Generator Not Required
---------------------------------------------------------------------	--------------------------------------------------------------------	---------------------------------------------------------------------------------------------------	----------------------------------------------------	------------------------------------------------------------------------------	-----------------------------------------------------------------------------------------------------------------------------	------------------------------------------------------------------------------------------

		JOB NO.	33226		
		SCALE	DATE		
TITLE	107' ASCENDANT AERIAL LADDER AND BODY ASSEMBLY		DRAWN BY	TKA	14NOV18
FOR	Foxborough Fire Department MA		CHECKED BY	GRM	14NOV18
DWG NO.	33226AD		SHEET SIZE	SHEET NO.	
			D	1 OF 1	

**NOTE**  
DIMENSIONS SHOWN ARE APPROXIMATE AND ARE SUBJECT TO MINOR DEVIATIONS AS MAY OCCUR OR BE NECESSARY IN CONSTRUCTION. MINOR DETAILS NOT SHOWN.

- ONE 1.50 OUTLET WITH 2.00 PIPING AND SWIVEL LOCATED IN THE CENTER BUMPER TRAY
- SHORELINE RECEPTACLE WITH KUSSMAUL SUPER AUTO-EJECT LOCATED IN THE DRIVER SIDE STEPWELL
- AIR INLET WITH DISCONNECT COUPLING IN THE DRIVER SIDE STEPWELL
- BATTERY CHARGER LOCATED BEHIND DRIVER'S SEAT PER SHOP ORDER
- BATTERY CHARGE INDICATOR LOCATED ON DRIVER'S SEAT RISER
- TWO PULL STRAPS ON DOOR IN COMPARTMENTS PER SHOP ORDER
- ELEVEN BRUSHED STAINLESS STEEL SCAFFPLATES INSIDE BODY COMPARTMENT DOORS PER SHOP ORDER
- SEVEN ADJUSTABLE SHELVES IN COMPARTMENTS PER SHOP ORDER
- TWO FLOOR MOUNTED SLIDE-OUT TRAYS IN COMPARTMENTS PER SHOP ORDER
- ONE CTECH THREE DRAWER ASSEMBLY IN COMPARTMENT PER SHOP ORDER
- ONE STORAGE RACK FOR (8) AIR BOTTLES LOCATED IN COMPARTMENT PER SHOP ORDER
- THREE ALUMINUM PEGBOARD WITH TRACKS ON THE BACK WALL OF COMPARTMENTS PER SHOP ORDER
- THREE 120V INTERIOR RECEPTACLES LOCATED PER SHOP ORDER
- NON-RAISED AERIAL PEDESTAL
- 1500 GPM HIGH FLOW WATERWAY
- REMOTE LADDER CONTROLS AT AERIAL TIP
- NO LIMITED RETRACTION

REV	DATE	BY	CH	ENFORCER
1	11FEB19	TKA	KBO	PIERCE
2	07DEC18	TKA	KBO	MODEL