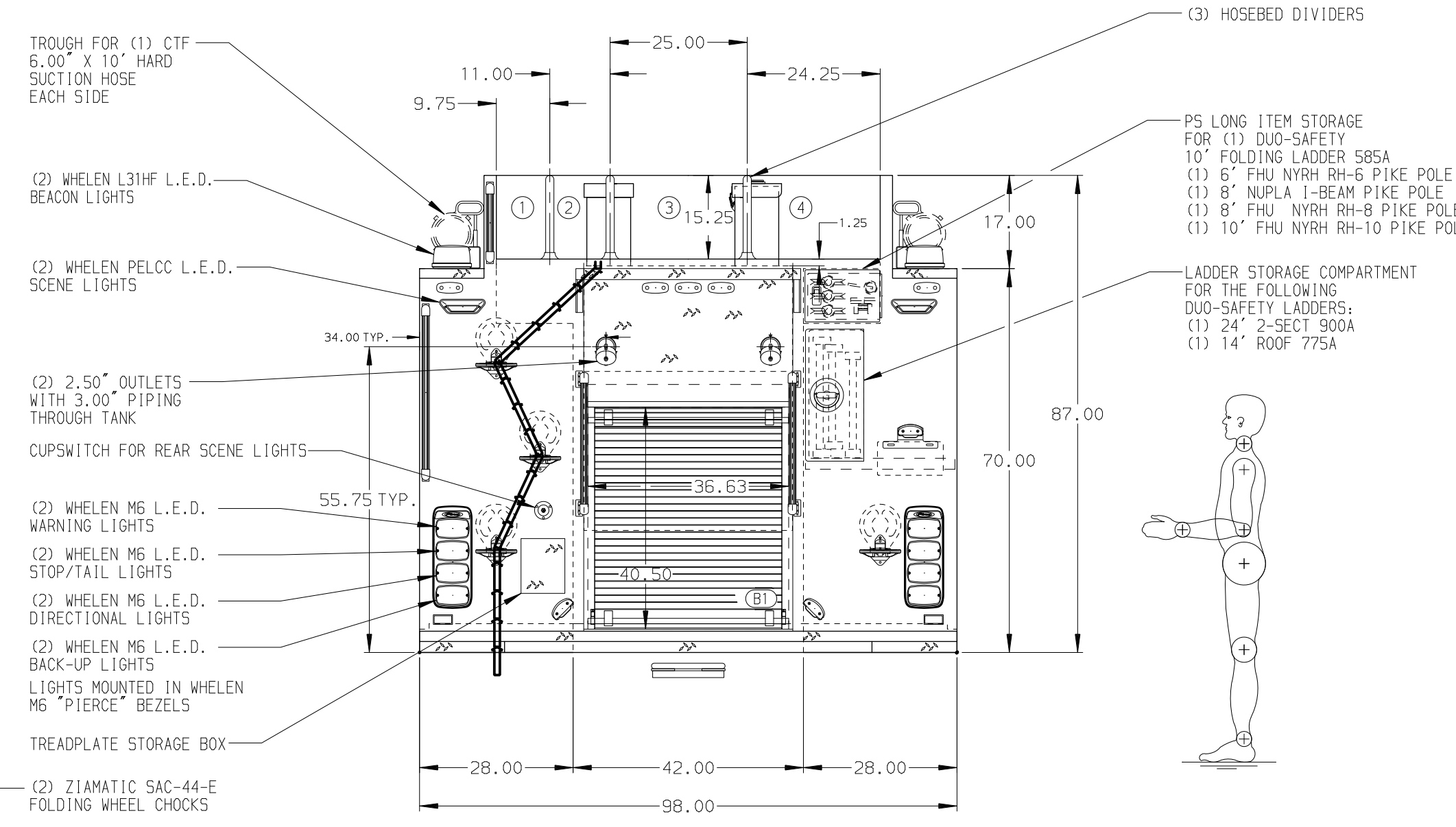
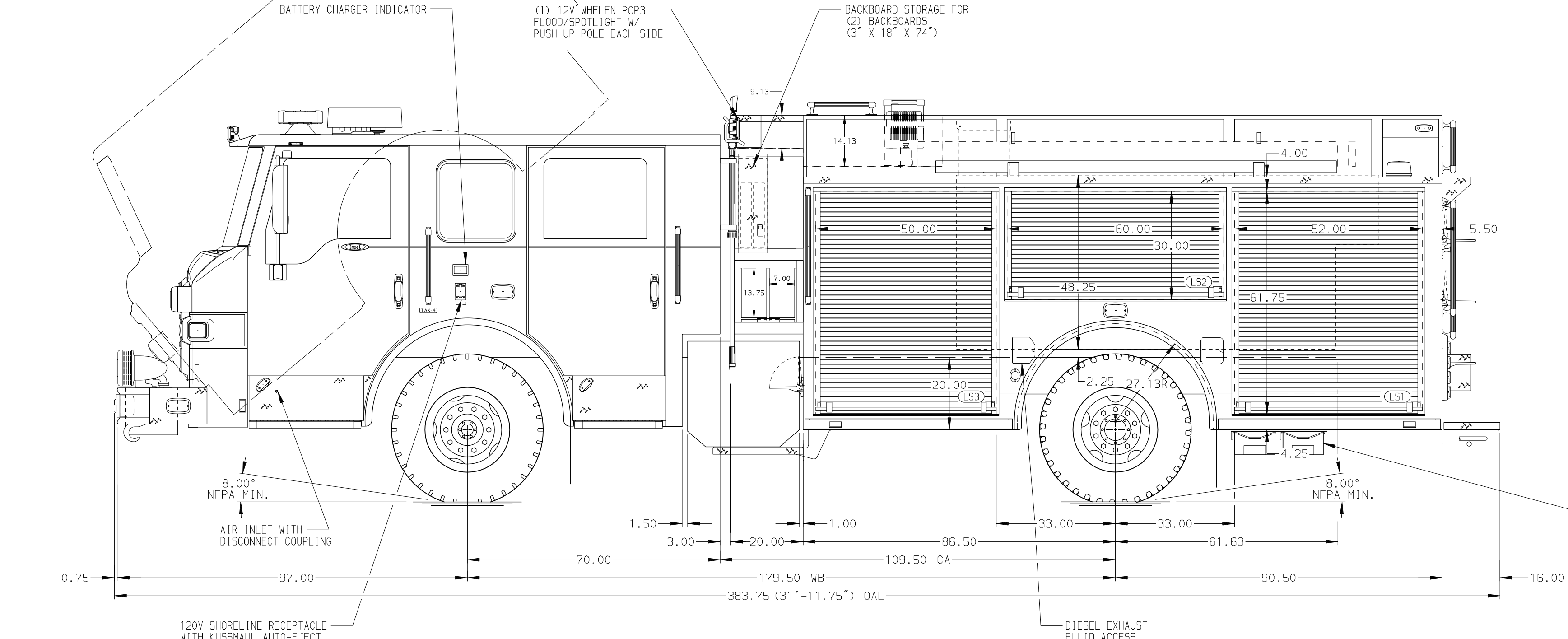


- HOSEBED CAPACITIES
- ① 200' OF 2.50" D.J. POLY HOSE
  - ② 200' OF 2.50" D.J. POLY HOSE
  - ③ 800' OF 3.00" D.J. POLY HOSE
  - ④ 800' OF 3.00" D.J. POLY HOSE



ALUMINUM BODY

MAXIMUM O.A.H. 132.00"

FRONTAL IMPACT PROTECTION

NOTE  
DIMENSIONS SHOWN ARE APPROXIMATE AND ARE SUBJECT TO MINOR DEVIATIONS AS MAY OCCUR OR BE NECESSARY IN CONSTRUCTION. MINOR DETAILS NOT SHOWN.

1. BATTERY CHARGER IN L53
2. ADJUSTABLE FULL WIDTH/FULL DEPTH SHELVES THREE IN L53, TWO IN L51 AND R51 AND ONE IN B1
3. ONE FLOOR MOUNTED SLIDE-OUT TRAY IN L51, B1, AND R51
4. SWING-OUT ALUMINUM TOOLBOARD IN L52
5. AIR OUTLET W/ SHUT OFF VALVE LOCATED ON DS PUMP PANEL
6. TWO AIR BOTTLE HOLDERS IN R53

REV	DATE	BY	CH	IMPEL
1	13FEB19	LST	PPE	CHASSIS DATA
2	21JAN19	LST	PPE	MAKE
3	26DEC18	KLE	KW1	PIERCE
4	14NOV18	LST	AZA	MODEL

TITLE	FOR	DWG NO.
1500-D-710 GAL POLY W/40 GAL FOAM CELL, 177" RESCUE (2)XLAYS, DELUGE, LADDERS THRU PS BODY	CITY OF KEY WEST FIRE DEPARTMENT KEY WEST, FLORIDA	33241AD

**Pierce MANUFACTURING INC.**

JOB NO. 33241

SCALE 1:24 DATE

DRAWN BY LST 310CT18

CHECKED BY AZA 06NOV18

SHEET SIZE D SHEET NO. 1 OF 1