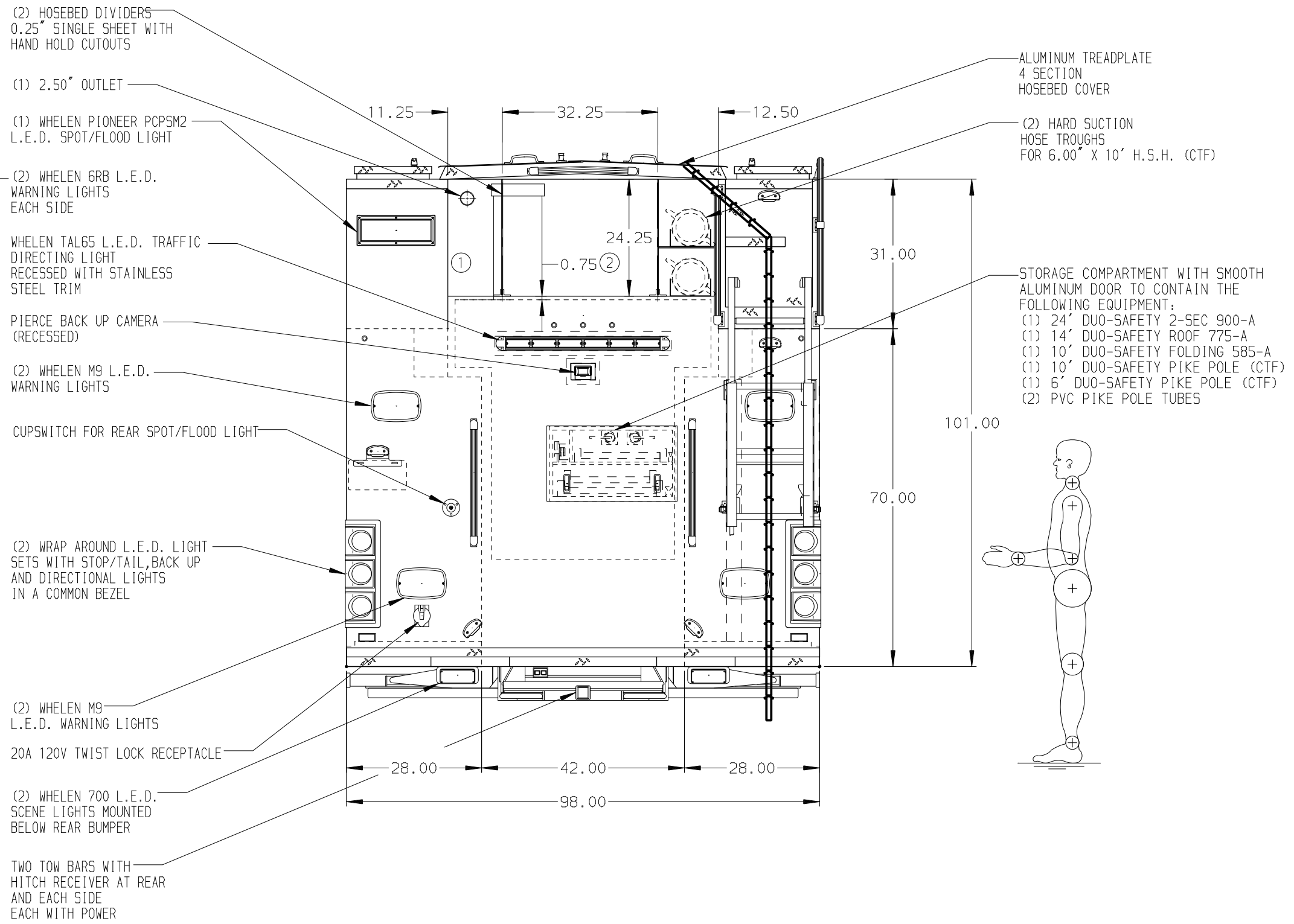



HOSEBED CAPACITIES
① 200' OF 3.00" HOSE
② 1000' OF 5.00" HOSE



ALUMINUM BODY

NOTE
DIMENSIONS SHOWN ARE APPROXIMATE AND ARE SUBJECT TO MINOR DEVIATIONS AS MAY OCCUR OR BE NECESSARY IN CONSTRUCTION.
MINOR DETAILS NOT SHOWN.

1. WHEEL CHOCKS AND BRACKETS (CTF)
2. AIR INLET/OUTLET WITH DISCONNECT FITTING ON D.S. PUMP PANEL
3. BATTERY CHARGER LOCATED BEHIND DRIVER'S SEAT
4. BATTERY CHARGER INDICATOR LOCATED AT DRIVER'S SIDE STEP AREA
5. DUAL L.E.D. LIGHT STRIPS LOCATED IN HOSE BED
6. ONE FULL WIDTH/DEPTH ADJUSTABLE SHELF IN RS1 AND RS4
7. TWO ADJUSTABLE SLIDE-OUT TRAYS IN LS3
8. ONE ADJUSTABLE TILTING SLIDE-OUT TRAY IN LS1, LS2, RS1, RS2, AND RS4
9. ONE FLOOR MOUNTED SLIDE-OUT TRAY WITH 2.00" SIDES IN LS1, LS3, AND RS4
10. ONE FLOOR MOUNTED FULL WIDTH/DEPTH TWO WAY UTILITY TRAY WITH 4.00" SIDES IN THE TRANSVERSE PORTION OF LS1 AND RS1
11. ALUMINUM SLIDE-OUT TOOLBOARD IN LS3
12. ALUMINUM FULL WIDTH TOOLBOARD MOUNTED ON A 2-WAY TRAY IN LS1 AND RS1
13. CABLE RELEASE ADDED TO ALL SLIDE OUT TRAYS
14. SLIDE-OUT BRACKET W/ ROLLER GUIDES ATTACHED FOR GUIDING HOSE IN RS4
15. ONE VERTICAL PARTITION IN COMPARTMENT LS3
16. 6-SLOT CUSTOM RACK IN RS3
17. CIRCUIT BREAKER PANEL IN LS3
18. ONE CMW 6022 DUAL AIR/ELECTRIC REEL WITH 200' OF 10/4 CABLE OF EACH IN RH2

| | | | | | |
|---|--|--------------------|--|-----------|------------|
|  | | MANUFACTURING INC. | | JOB NO. | 3332701-02 |
| SCALE | | 1:24 | | DATE | |
| DRAWN BY | | LST | | 29NOV18 | |
| CHECKED BY | | JBL | | 30NOV18 | |
| SHEET SIZE | | D | | SHEET NO. | 1 OF 1 |

| REV | DATE | BY | CH | VELOCITY |
|---------|------|-----|--------|----------|
| 18MAR19 | LST | LPA | MAKE | |
| 19FEB19 | LST | LPA | PIERCE | |
| 14DEC18 | LST | SMA | MODEL | |

| | |
|---------|---|
| TITLE | 1500-D-1000 GAL POLY, 214" PUC RESCUE LADDERS THRU TANK, (3) X-LAYS, DELUGE |
| FOR | OSCEOLA COUNTY PUBLIC SAFETY KISSIMMEE, FLORIDA |
| DWG NO. | 33327AD |