

PUMPER BODY

Medium Aluminum 2nd Gen Pumper

CHASSIS

Enforcer Chassis

CHASSIS AXLE, FRONT, CUSTOM

18,000 Lb TAK-4 Axle

AXLE, REAR

24,000 Lb Dana Axle

ENGINE

380 HP Cummins L9 Engine

TRANSMISSION

Allison 5th Gen, 3000 EVS P

BUMPER

19" Extended Stainless Steel

CAB

7000 Enforcer Cab

BODY WATER TANK

750 Gallon Poly Water Tank

COMPT, PUMPER, REAR

44.50" FF RollUp Rear Compt

COMPT, PUMPER, DRIVER SIDE

152" RollUp Full Height Front & Rear FDLR

COMPT, PUMPER PASS. SIDE

152" RollUp Full Height Front & Rear FDLR

FIRE SUPPRESSION PUMPHOUSE

52" Control Zone Side Mount

PUMP

1250 GPM Waterous CS

CROSSLAYS, 1.50"

(2) 1.50" Standard Capacity

CROSSLAYS, 2.50"

2.50" Crosslay Not Required

SPEEDLAYS

Speedlays Not Required

GENERATOR

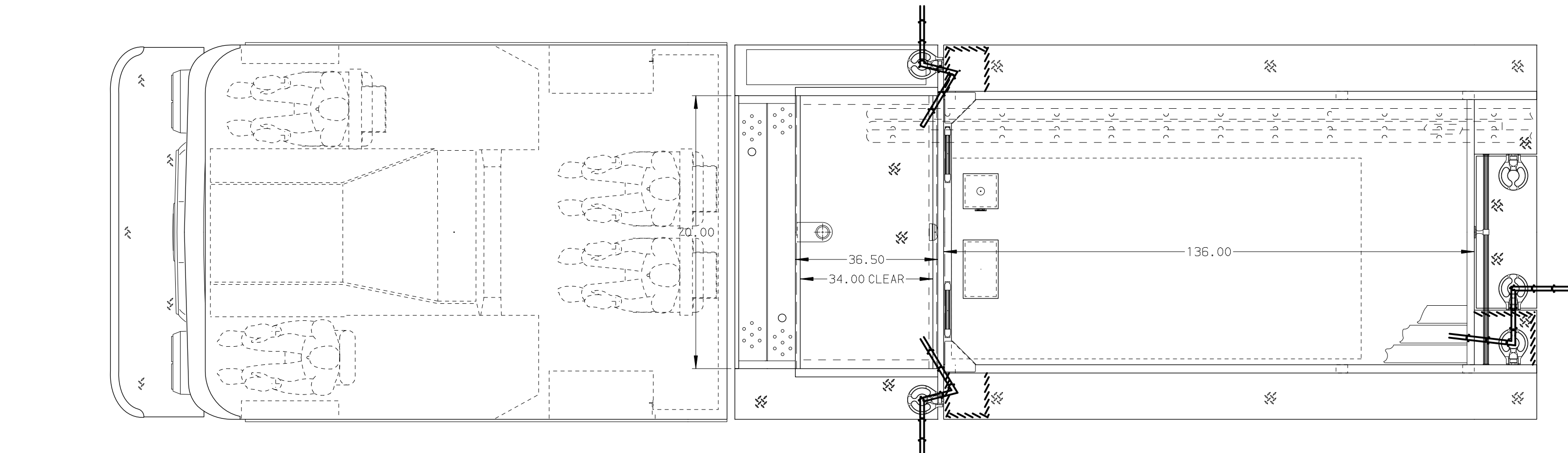
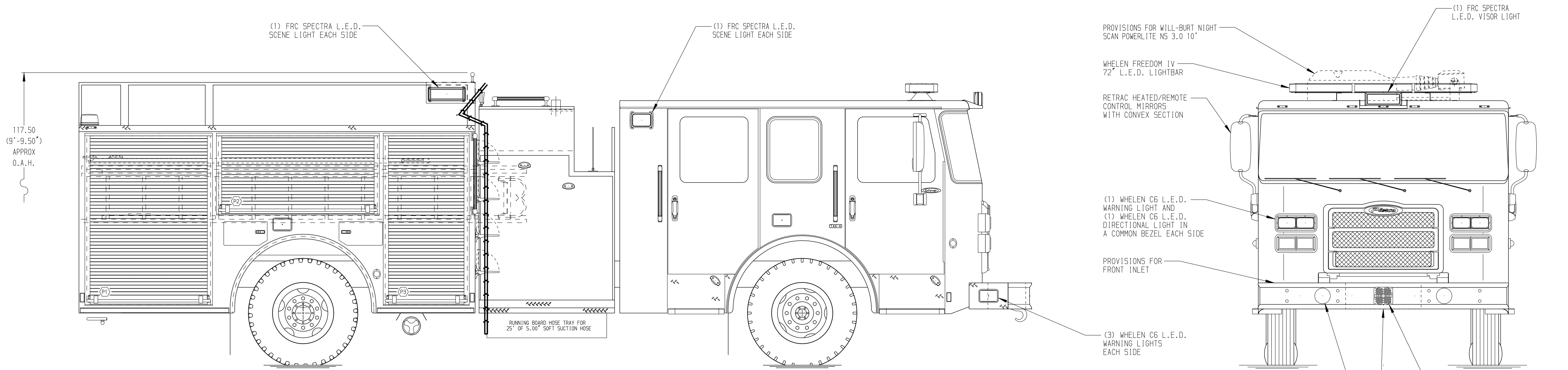
Generator Not Required

Foam System

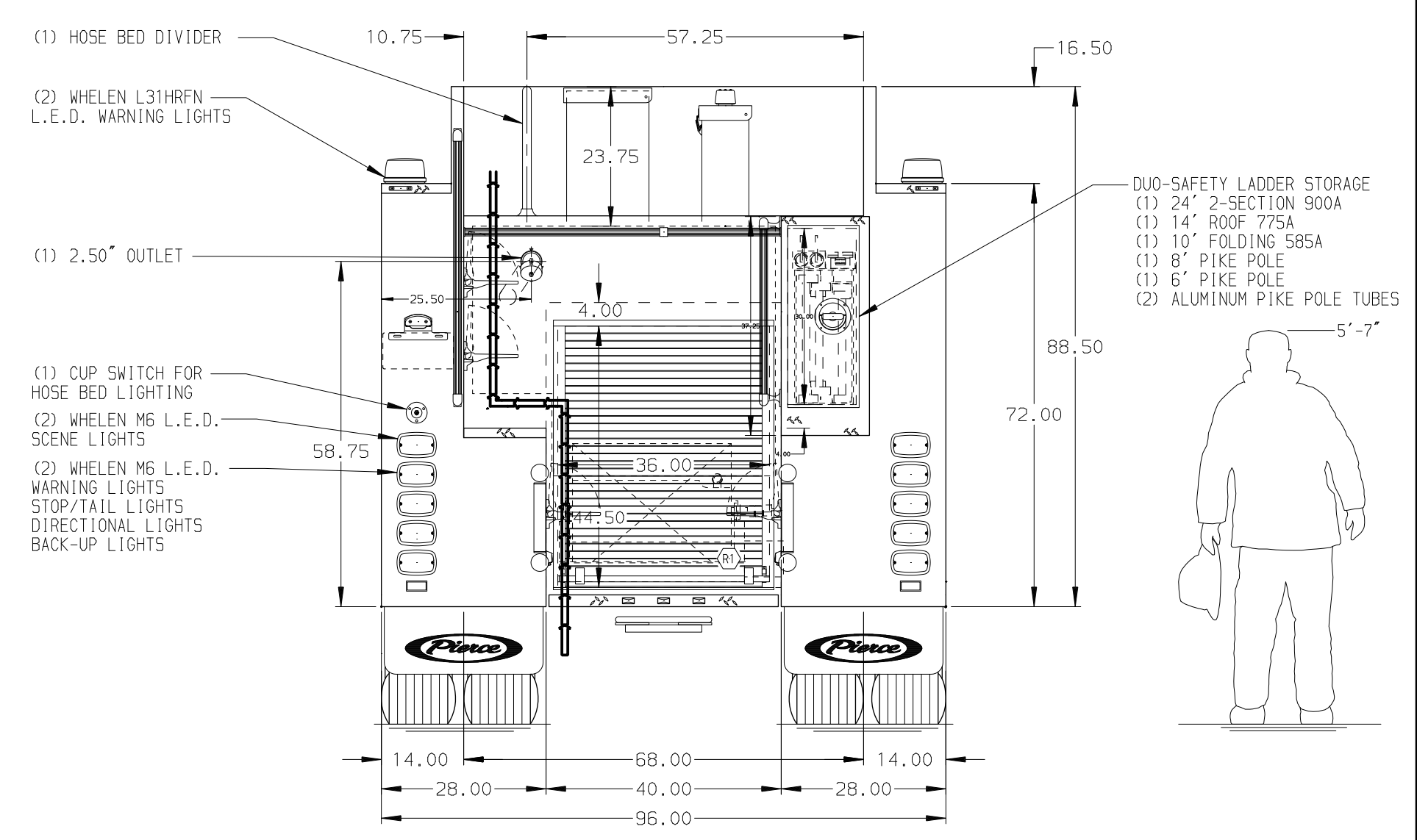
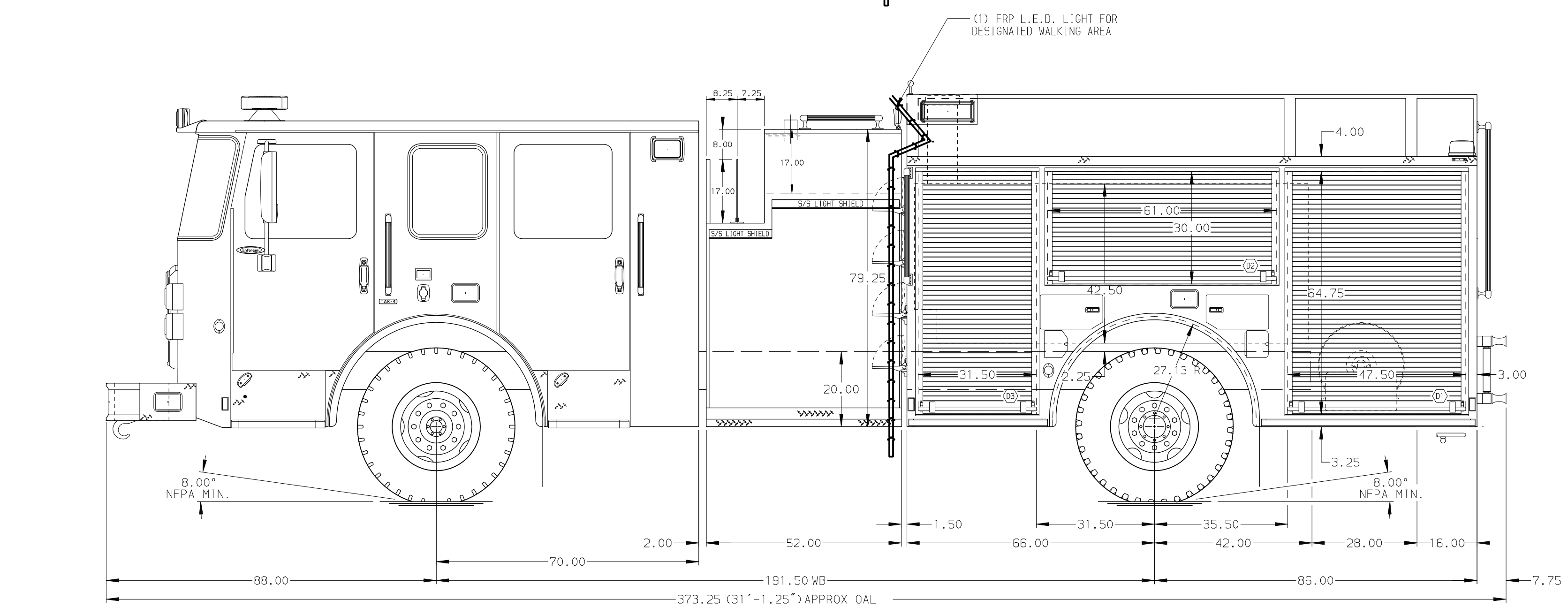
FoamPro 1601 Single Agent Foam System

Foam Cell

20 Gallon Foam Cell, Not Reduced Water



HOSEBED CAPACITY	
BED 1	300' OF 2.50" D.J. POLY HOSE
BED 2	1000' OF 5.00" D.J. POLY HOSE



NOTE
DIMENSIONS SHOWN ARE APPROXIMATE AND ARE SUBJECT TO MINOR DEVIATIONS AS MAY OCCUR OR BE NECESSARY IN CONSTRUCTION. MINOR DETAILS NOT SHOWN.

- ONE 1.50 OUTLET WITH 2.00 PIPING AND SWIVEL LOCATED IN CENTER BUMPER TRAY
- SHORELINE RECEPTACLE WITH KUSSMAUL SUPER AUTO-EJECT LOCATED ON DRIVER SIDE OF THE CAB
- AIR INLET WITH DISCONNECT COUPLING IN THE DRIVER SIDE STEPWELL
- BATTERY CHARGER LOCATED IN COMPARTMENT L53
- BATTERY CHARGE INDICATOR LOCATED ON THE DRIVER SIDE OF THE CAB
- FIVE ADJUSTABLE SHELVES IN COMPARTMENTS PER SHOP ORDER
- ONE FLOOR MOUNTED SLIDE-OUT TRAY LOCATED PER SHOP ORDER
- ONE SWING-OUT TOOLBOARD LOCATED PER SHOP ORDER
- FOUR ALUMINUM PEGBOARDS LOCATED PER SHOP ORDER
- ONE SET OF HORIZONTAL EQUIPMENT MOUNTING TRACKS LOCATED PER SHOP ORDER
- HANNAY BOOSTER REEL MODEL EF34-23-24 LOCATED IN COMPARTMENT R1 WITH CAPACITY FOR 200' OF 1.00" BOOSTER HOSE (HIGH PRESSURE HOSE RAN THROUGH FRAME RAILS)

REV	DATE	BY	CH	ENFORCER
26	APR 19	COL	THS	

		JOB NO.	33384
		SCALE	DATE
TITLE	Pierce Pumper Approval Drawing	DRAWN BY	TKA
FOR	Pierce Stock Unit	CHECKED BY	THS
DWG NO.	33384AD	SHEET SIZE	SHEET NO.
		D	1 OF 1