

Pumper, PUC

BODY

Pumper, PUC, Aluminum

CHASSIS

Arrow XT Chassis, PUC

CHASSIS AXLE, FRONT, CUSTOM

22,800 Lb TAK-4 Axle

AXLE, REAR

31,000 Lb Meritor Axle

ENGINE

525 HP DD13 Engine

TRANSMISSION

Allison 5th Gen, 4500 EVS P

BUMPER

26" Extended Painted Steel Underslung Bumper

CAB

6710 Arrow XT Cab, PUC

BODY

WATER TANK

1000 Gallon Poly Water Tank

COMPT, PUMPER, REAR

40.50" FF RollUp Rear Compt w/Tailboard, PUC

COMPT, PUMPER, DRIVER SIDE

189" RollUp Full Height & Depth Front & Rear, PUC

COMPT, PUMPER PASS. SIDE

189" RollUp Full Height & Depth Front & Rear, PUC

FIRE SUPPRESSION PUMPHOUSE

Control Zone, PUC

PUMP

1500 GPM Pierce PUC

CROSSLAYS, 1.50"

(2) 1.50", Full Width Poly Trays, 250"

CROSSLAYS, 2.50"

(1) 2.50", Full Width Poly Tray, 200"

GENERATOR

Generator Not Required

Foam System

Husky 3 Single Agent Foam System

Foam Cell

25 Gallon Foam Cell, Not Reduced Water, PUC

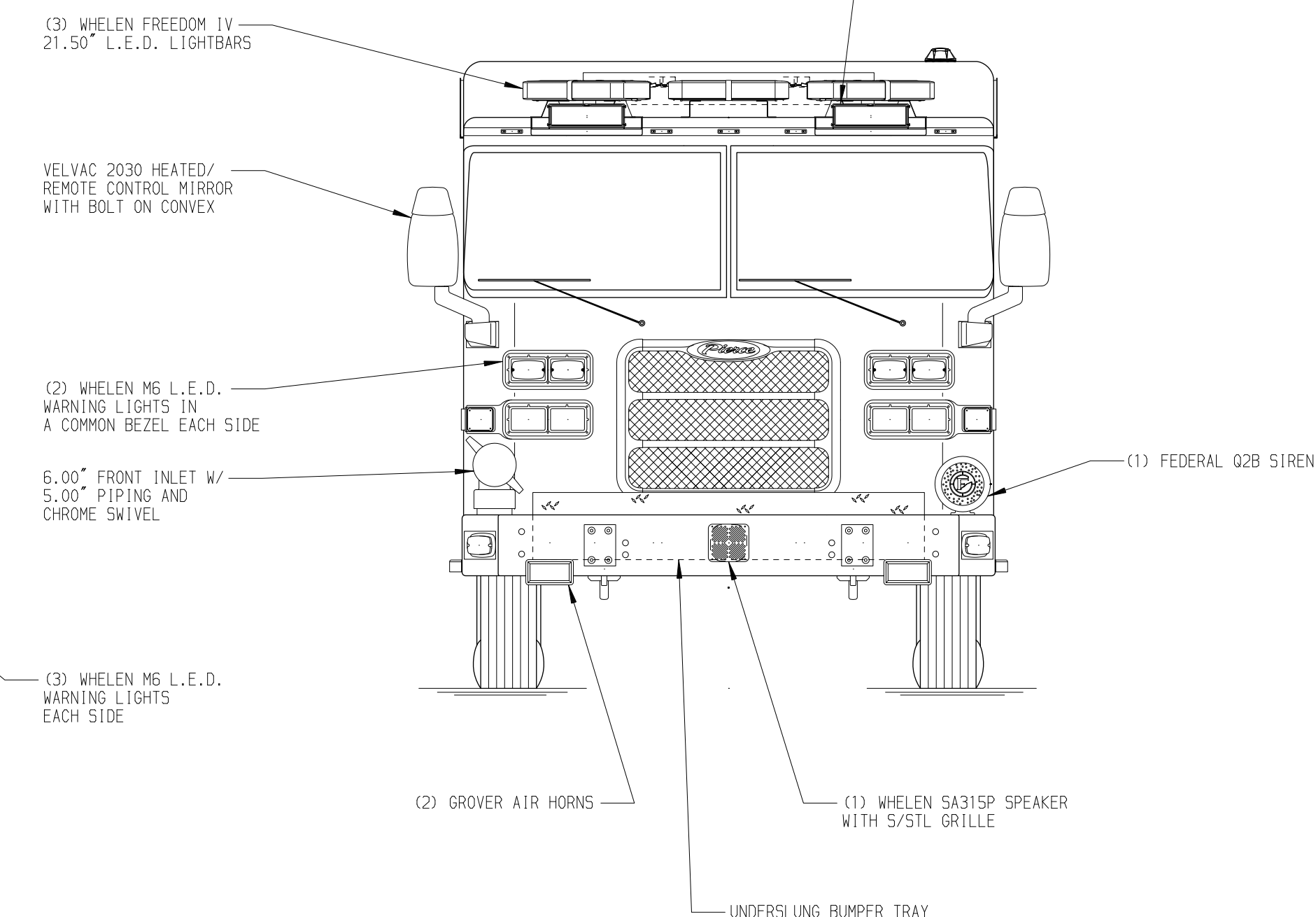
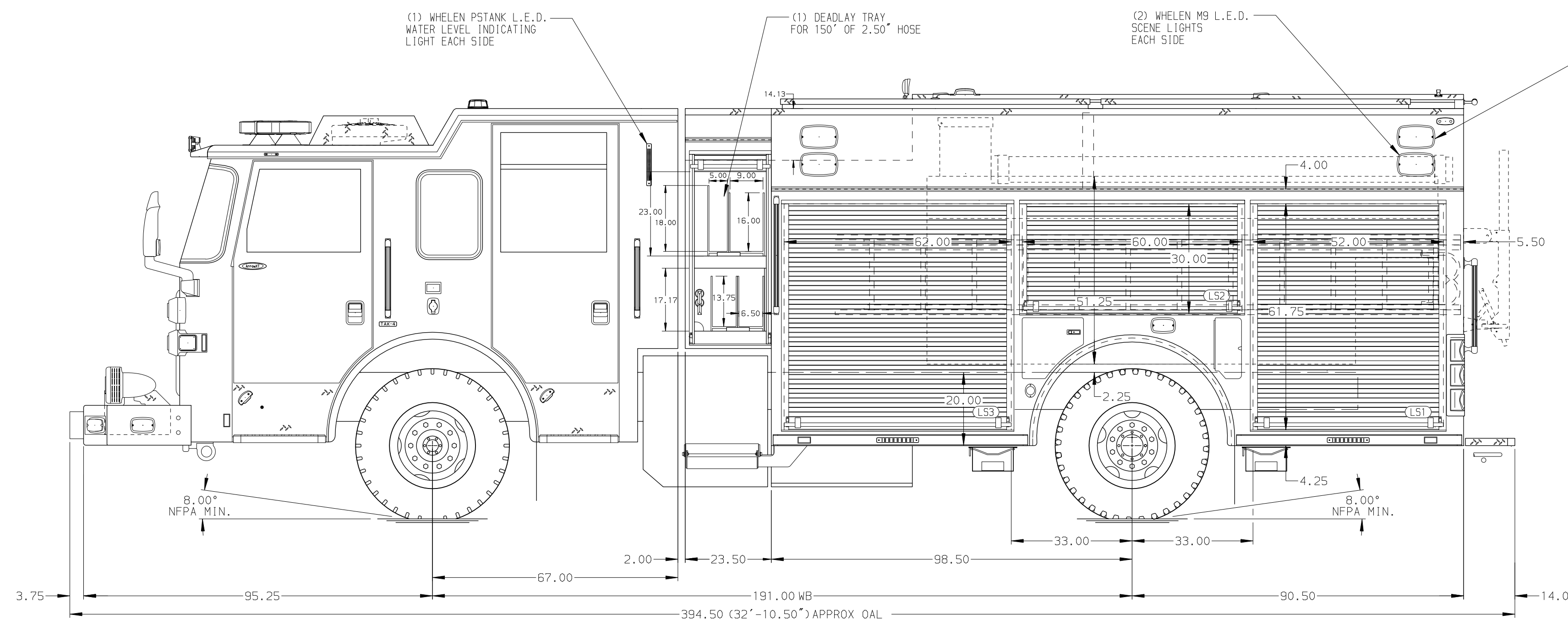
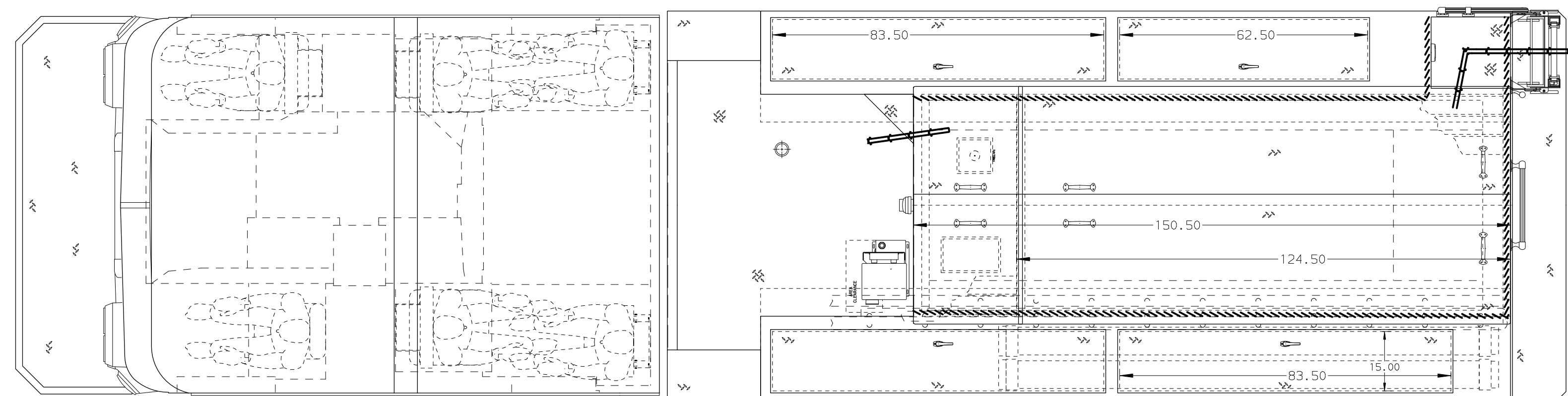
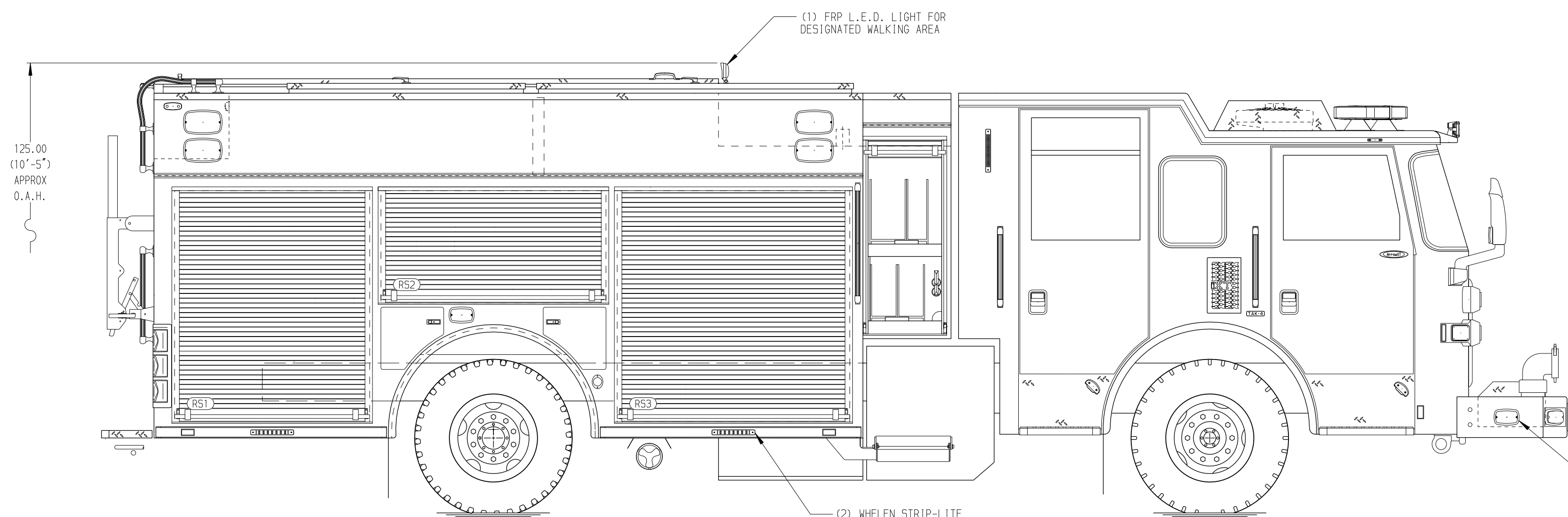
Side Roll and Frontal Impact Protection

NOTE

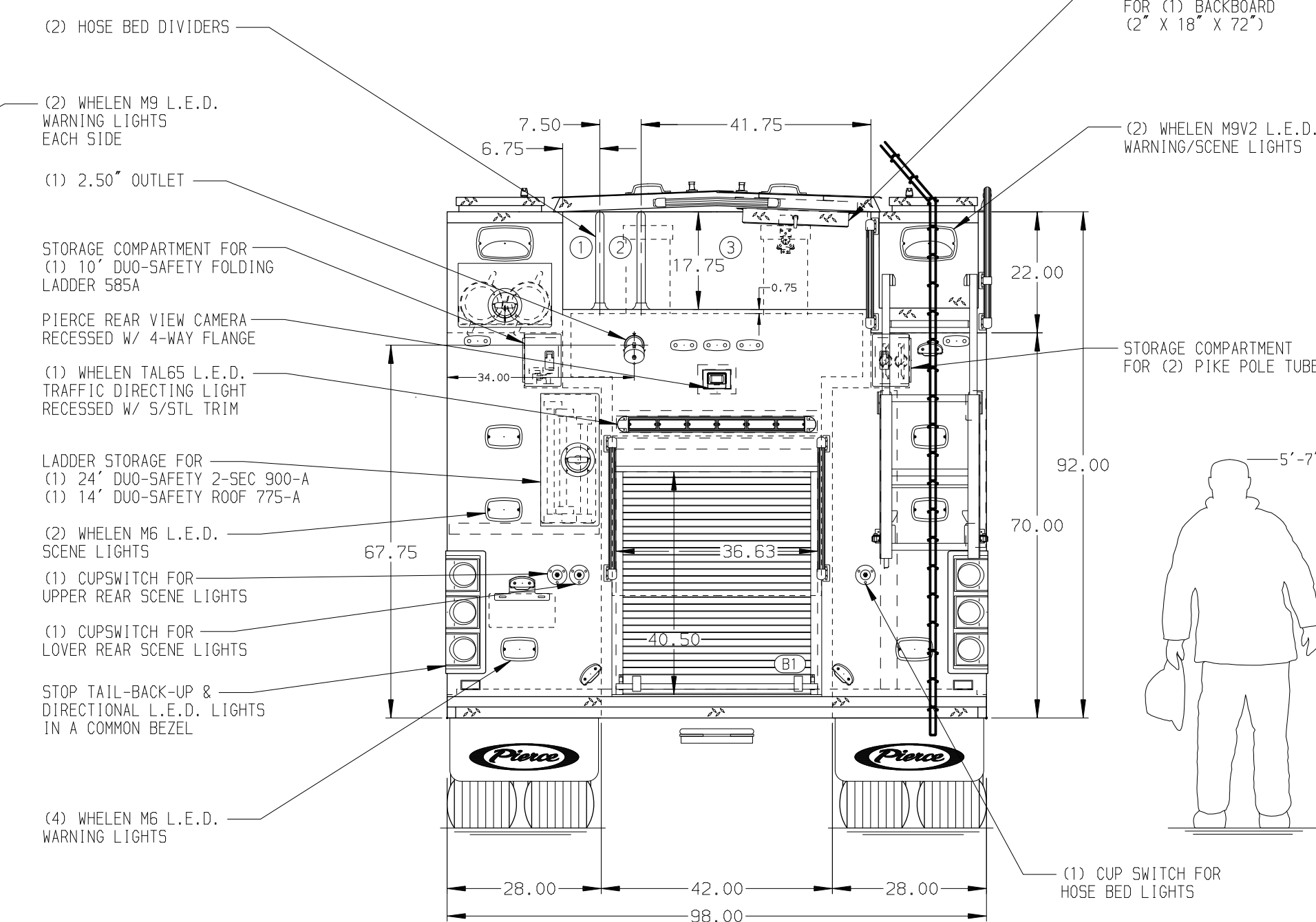
DIMENSIONS SHOWN ARE APPROXIMATE AND ARE SUBJECT TO MINOR DEVIATIONS AS MAY OCCUR OR BE NECESSARY IN CONSTRUCTION. MINOR DETAILS NOT SHOWN.

1. AUTOMATIC TIRE CHAINS
2. ONE 1.50" OUTLET WITH 2.00" PIPING AND SWIVEL LOCATED IN BUMPER TRAY
3. SHORELINE RECEPTACLE WITH KUSSMAUL SUPER AUTO-EJECT LOCATED ON DRIVER SIDE OF THE CAB
4. AIR INLET WITH DISCONNECT COUPLING IN THE DRIVER SIDE STEPWELL
5. BATTERY CHARGER LOCATED BEHIND DRIVER'S SEAT
6. BATTERY CHARGE INDICATOR LOCATED ON THE DRIVER OF CAB
7. TEN ADJUSTABLE SHELVES LOCATED PER SHOP ORDER
8. TWO FLOOR MOUNTED SLIDE-OUT TRAYS LOCATED PER SHOP ORDER
9. ONE SLIDE-OUT TOOLBOARD LOCATED PER SHOP ORDER

10. ONE SWING-OUT TOOLBOARD LOCATED PER SHOP ORDER
11. ONE VERTICAL PARTITION LOCATED PER SHOP ORDER
12. ALUMINUM REARBORD LOCATED PER SHOP ORDER
13. XANTREX XPOWER POWER INVERTER LOCATED PER SHOP ORDER
14. ONE 120V 6-PLACE RECEPTACLES LOCATED PER SHOP ORDER
15. TWO 120V DUPLEX RECEPTACLES LOCATED PER SHOP ORDER
16. THREE TILTING-SLIDE-OUT TRAYS LOCATED PER SHOP ORDER
17. ONE ADJUSTABLE SLIDE-OUT TRAY LOCATED PER SHOP ORDER
18. TWO VERTICAL HOSE STORAGE PARTITIONS LOCATED PER SHOP ORDER



HOSEBED CAPACITY	
BED 1	200' OF 3.00" D.J. POLY HOSE
BED 2	200' OF 3.00" D.J. POLY HOSE
BED 3	1000' OF 5.00" D.J. POLY HOSE



Pierce MANUFACTURING INC.		JOB NO.	33438
		SCALE	DATE
		1:24	
Pierce PUC Pumper Approval Drawing		DRAWN BY	26FEB19
Tri-Lakes Monument Fire District		COL	
		CHECKED BY	26FEB19
		KBO	
		SHEET SIZE	SHEET NO.
		D	1 OF 1

REV	DATE	BY	CH	Arrow XT
14JUN19	KLE	KW1	MAKE	
08APR19	COL	KBO	PIERCE	
14MAR19	COL	KBO	MODEL	

TITLE	Pierce PUC Pumper Approval Drawing
FOR	Tri-Lakes Monument Fire District
DWG NO.	33438AD