

RIGHT SIDE COMPARTMENTS  
CONTAIN THE FOLLOWING:

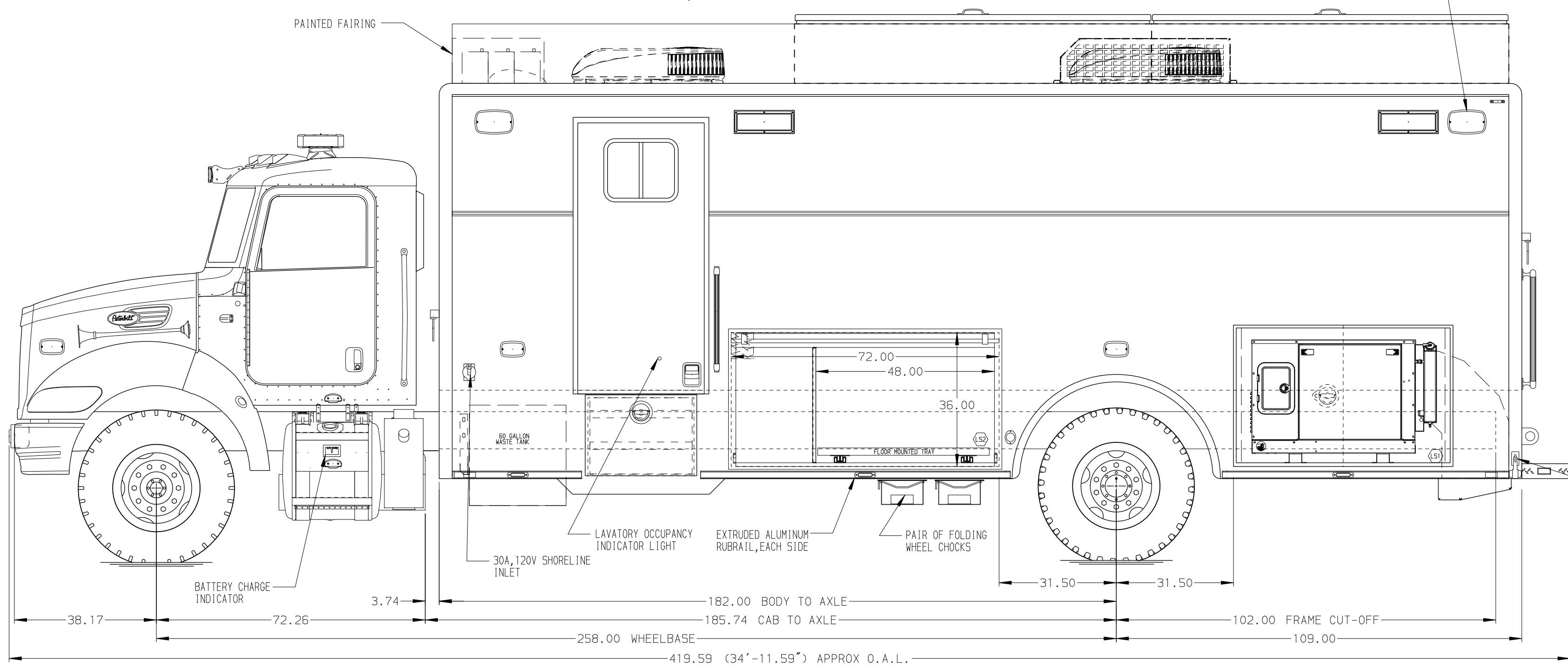
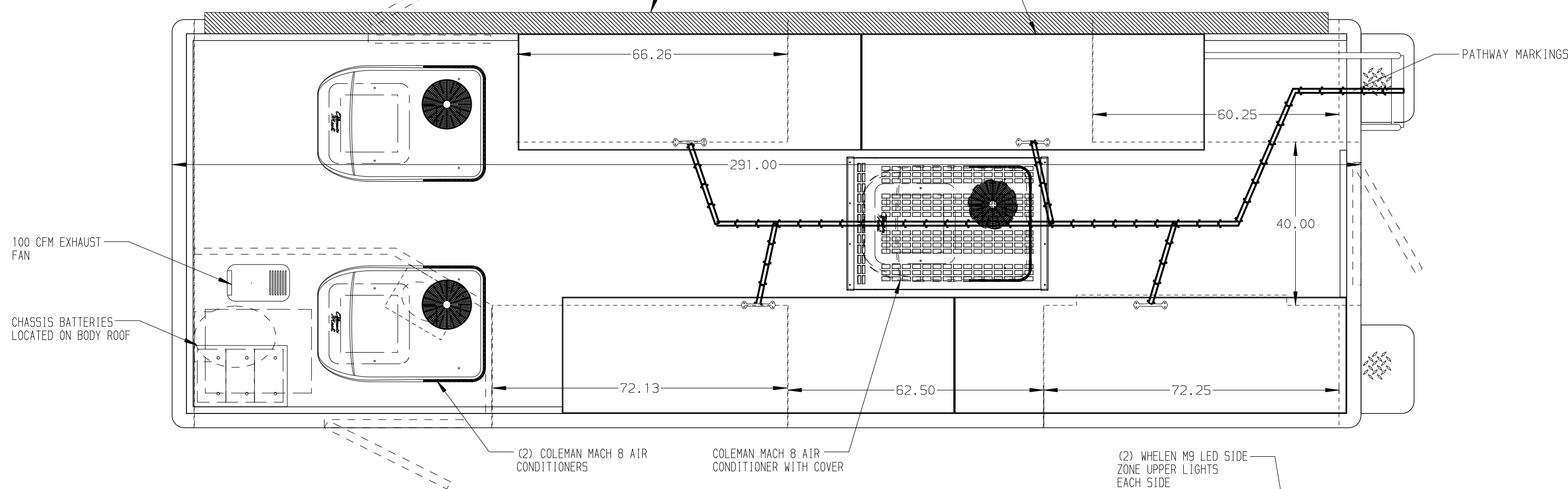
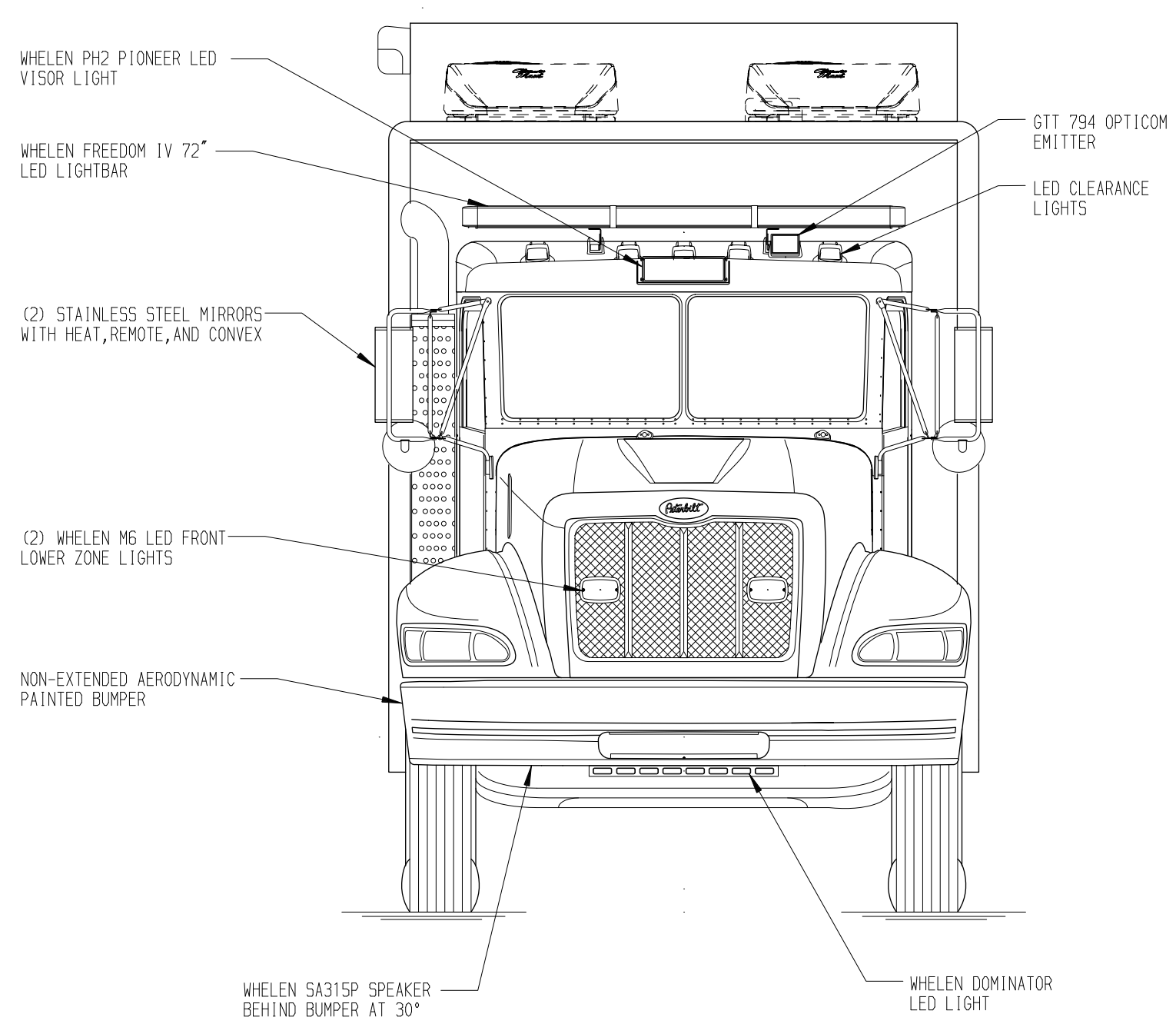
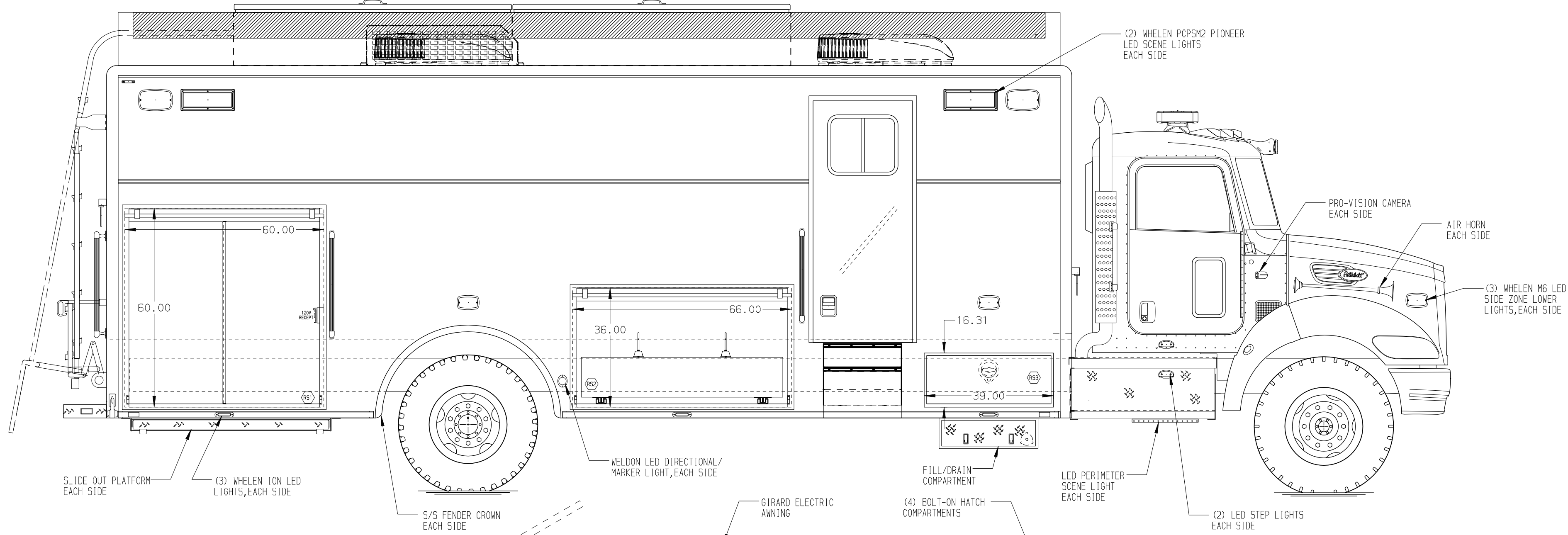
COMPARTMENT RS1 CONTAINS:

- (1) 15/20A, 120V DUPLEX RECEPTACLE
- (1) VERTICAL COMPARTMENT DIVIDER

COMPARTMENT RS2 CONTAINS:

- (1) SLIDE OUT SINK ENCLOSURE WITH 2 FAUCETS

COMPARTMENT RS3 CONTAINS:



LEFT SIDE COMPARTMENTS  
CONTAIN THE FOLLOWING:

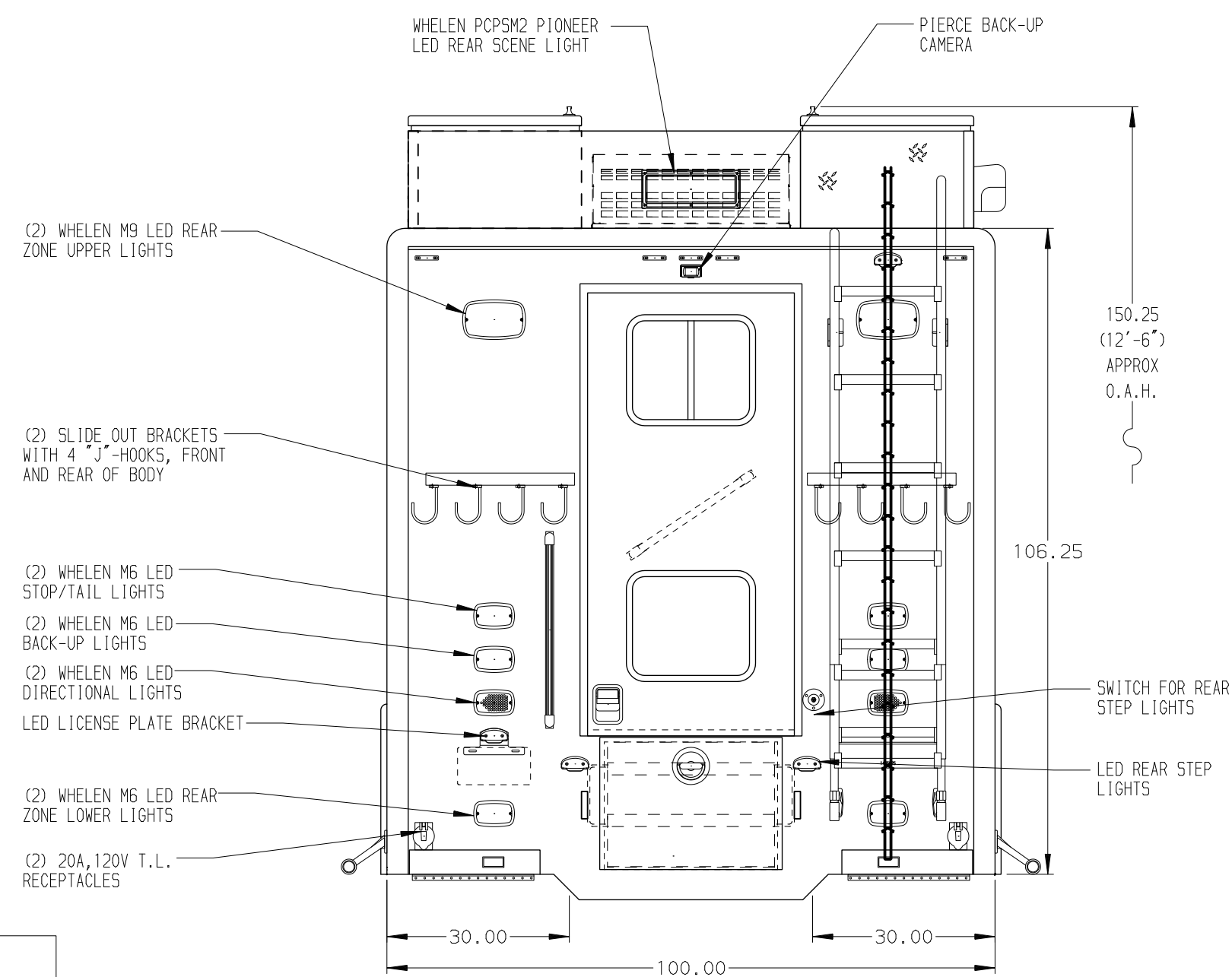
COMPARTMENT LS1 CONTAINS:

- (1) POWER TECHNOLOGY PT120S1-T4F 20kW DIESEL GENERATOR

COMPARTMENT LS2 CONTAINS:

- (1) FLOOR MOUNTED TRAY
- (1) VERTICAL COMPARTMENT DIVIDER
- (1) KUSMAUL 1200 CHARGER

NOTE:  
LAP DOORS HAVE BEEN SHOWN IN  
HIDDEN LINES TO CLEARLY IDENTIFY THE  
EQUIPMENT IN EACH COMPARTMENT. DASHED  
LINES ON SIDES ARE DOORS IN OPEN POSITION



NOTE  
DIMENSIONS SHOWN ARE APPROXIMATE  
AND ARE SUBJECT TO MINOR DEVIATIONS  
AS MAY OCCUR OR BE NECESSARY IN  
CONSTRUCTION.  
MINOR DETAILS NOT SHOWN.

NOTES:  
1. LED LIGHTS IN ALL BODY AND HATCH COMPARTMENTS

CLEAR DOOR WIDTH KEY				CHASSIS DATA			
AMOR ROLL UP DOORS:	-2 1/4"			MAKE			
GORTITE ROLL UP DOORS:	-2 1/2"						
PIERCE DOUBLE LAP DOORS:	-4 1/4"	17JUL19	DHE	CDK	PETERBILT		
PIERCE LIFT-UP LAP DOORS:	-1 1/2"	30MAY19	DHE	CDK			
(EX: 60" F-F ~ 2 1/4" = 57 3/4" CLEAR) (F-F) = FRAME TO FRAME		10APR19	DHE	CDK	MODEL		
		REV	DATE	BY	CH	348	

		JOB NO.	33458
TITLE		SCALE	DATE
FOR		DRAWN BY	08MAR19
DWG NO.		CHECKED BY	15MAR19
33458AD-SH1		SHEET SIZE	SHEET NO.
		D	1 OF 1