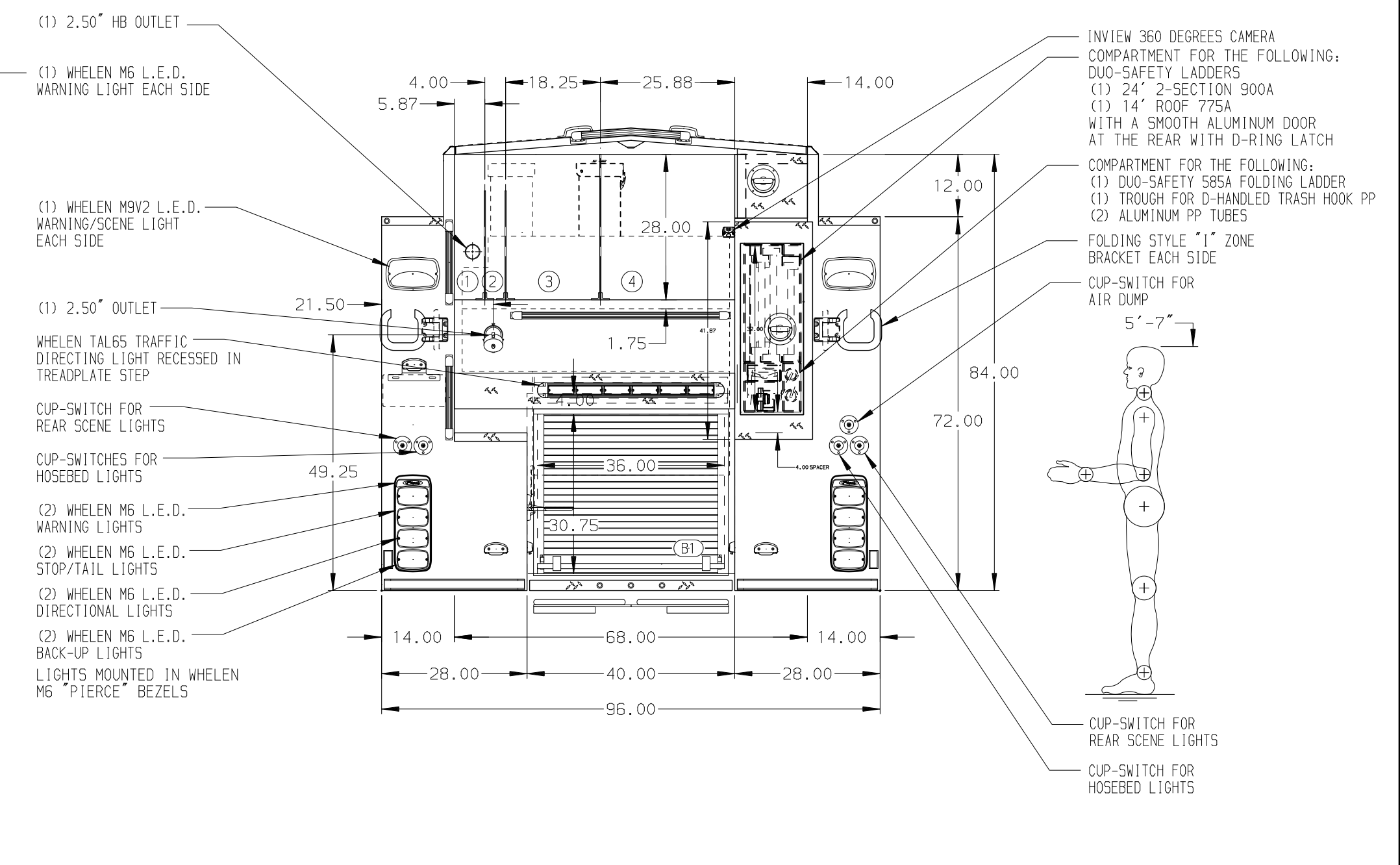
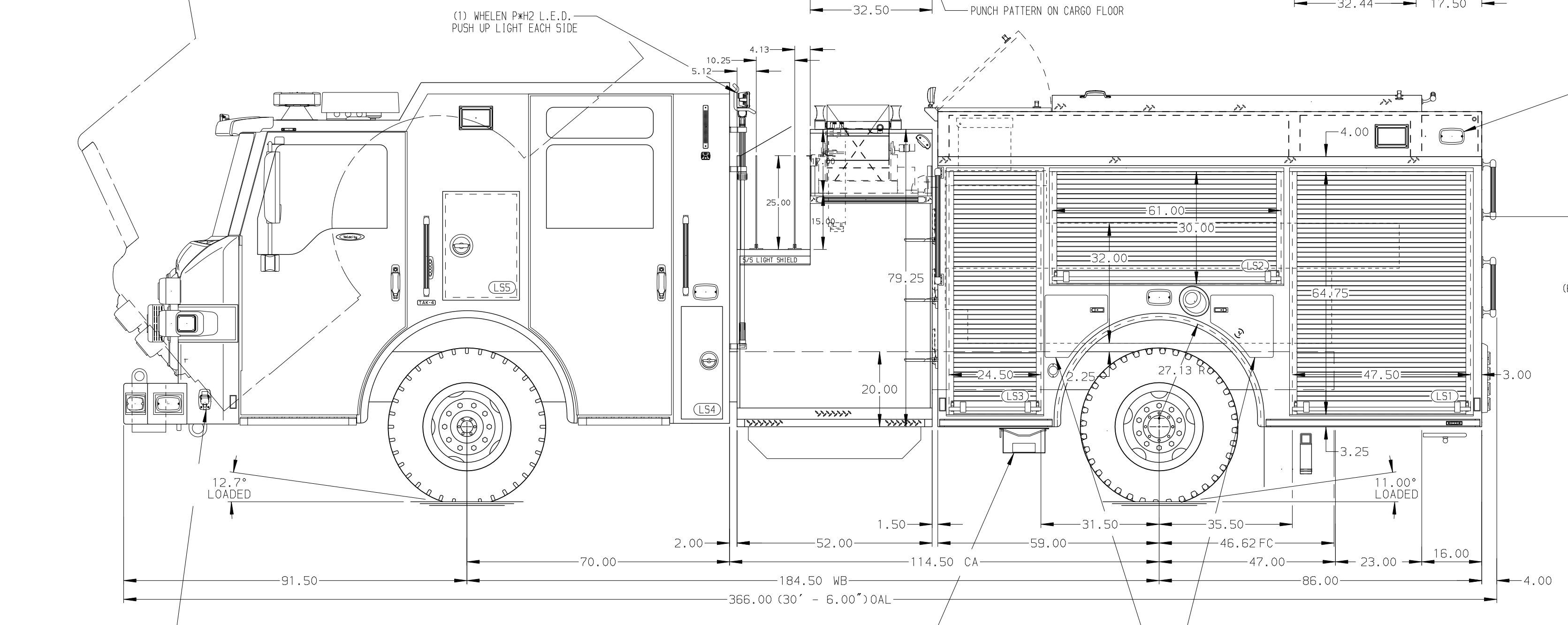


- HOSEBED CAPACITIES**
- ① - 200' OF 2.50\"/>



GALVANNEAL MAXIMUM O.A.L. 367" MAXIMUM O.A.H. 117" SIDE ROLL AND FRONTAL IMPACT PROTECTION

NOTE
DIMENSIONS SHOWN ARE APPROXIMATE AND ARE SUBJECT TO MINOR DEVIATIONS AS MAY OCCUR OR BE NECESSARY IN CONSTRUCTION. MINOR DETAILS NOT SHOWN.

1. AIR OUTLET WITH SHUT OFF VALVE RECESSED IN DRIVER'S SIDE PUMP PANEL
2. BATTERY CHARGER LOCATED IN CREW CAB SEAT RISER
3. DRIP PAN GUARD FOR ALL SIDE BODY ROLL-UP DOORS AND COMPARTMENT B1
4. ONE ADJUSTABLE FULL WIDTH/DEPTH SHELF IN COMPARTMENT RS2, TWO IN LS3, THREE IN LS1 & RS3, FOUR IN RS1
5. ONE FIXED FULL WIDTH/DEPTH SHELF IN COMPARTMENT LS3
6. ONE ALUMINUM TOOL BOARD WITH PEGBOARD AND TRACKS IN COMPARTMENT LS1, LS2 & RS3
7. ONE SWING-OUT ALUMINUM TOOL BOARD WITH PEGBOARD IN COMPARTMENT LS2
8. ALL BODY COMPARTMENTS WITH COVERS SHALL HAVE A REMOVABLE FILTER
9. CTECH DRAWER ASSEMBLY IN COMPARTMENT LS3
10. PARTITION BETWEEN COMPARTMENTS LS1/B1 AND RS1/B1
11. ONE VERTICAL PARTITION IN COMPARTMENT LS1
12. 4-WAY ALUMINUM ON THE FLOOR OF COMPARTMENT LS1 & B1

		JOB NO.	33482
		SCALE	1:24
TITLE 1500-D-600P 600G WATER/20G FOAM, 145" PUMPER BODY (3)XLAYS, DELUGE, BOOSTER REEL, LDERS BTWN TANK & SS		DRAWN BY	AMI
		CHECKED BY	NPE
FOR SAN RAMON VALLEY FIRE PROTECTION DISTRICT SAN RAMON, CALIFORNIA		DWG NO.	33482AD
		SHEET NO.	1 OF 1

REV	DATE	BY	CH	VELOCITY
15MAY19	AMI	CHR		
17APR19	AMI	CHR		
19FEB19	AMI	NPE		