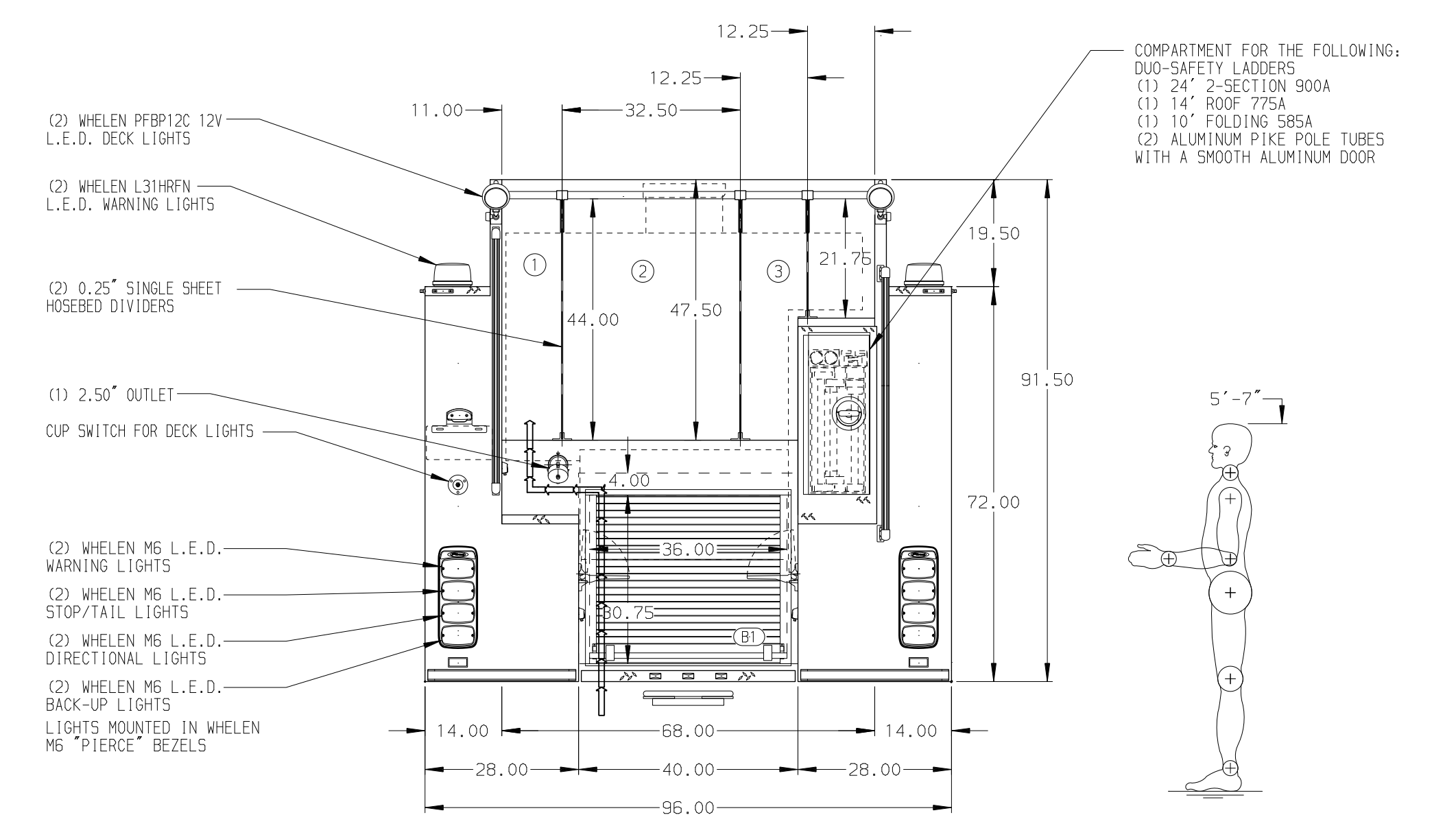
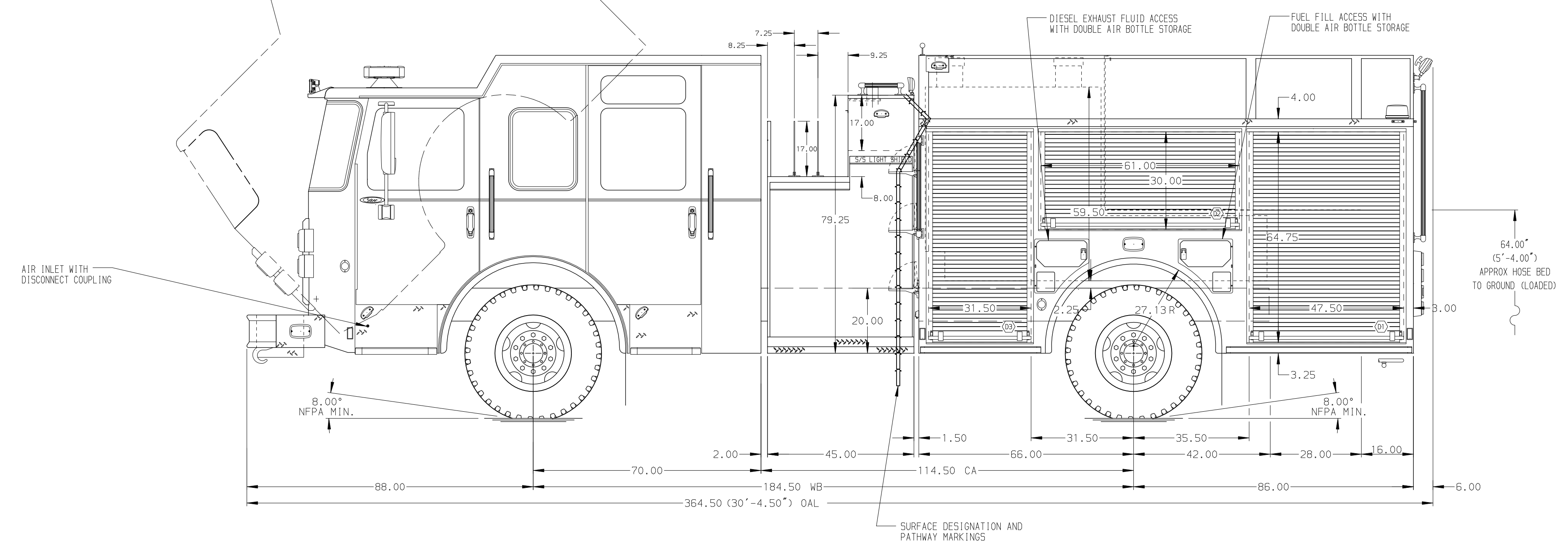


- HOSEBED CAPACITIES
- ① 500' OF 2.50" D.J. POLY HOSE
 - ② 1000' OF 5.00" D.J. POLY HOSE
 - ③ 500' OF 2.50" D.J. POLY HOSE



ALUMINUM BODY

NOTE
 DIMENSIONS SHOWN ARE APPROXIMATE AND ARE SUBJECT TO MINOR DEVIATIONS AS MAY OCCUR OR BE NECESSARY IN CONSTRUCTION. MINOR DETAILS NOT SHOWN.

				Pierce MANUFACTURING INC. BRADENTON, FLORIDA		JOB NO.	33521
						SCALE	1:24
						DATE	
				TITLE		DRAWN BY	JLA
				1500-D-720P, W/30 GAL FOAM, 152" NEW YORK STYLE PUMPER (2) CROSSLAYS, 45" PUMPHOUSE, DELUGE		CHECKED BY	CAG
				FOR		SHEET SIZE	D
				PIERCE FIELD UNIT BRADENTON, FLORIDA		SHEET NO.	1 OF 1
				DWG NO.		33521AD	
REV	DATE	BY	CH	SABER	FR		