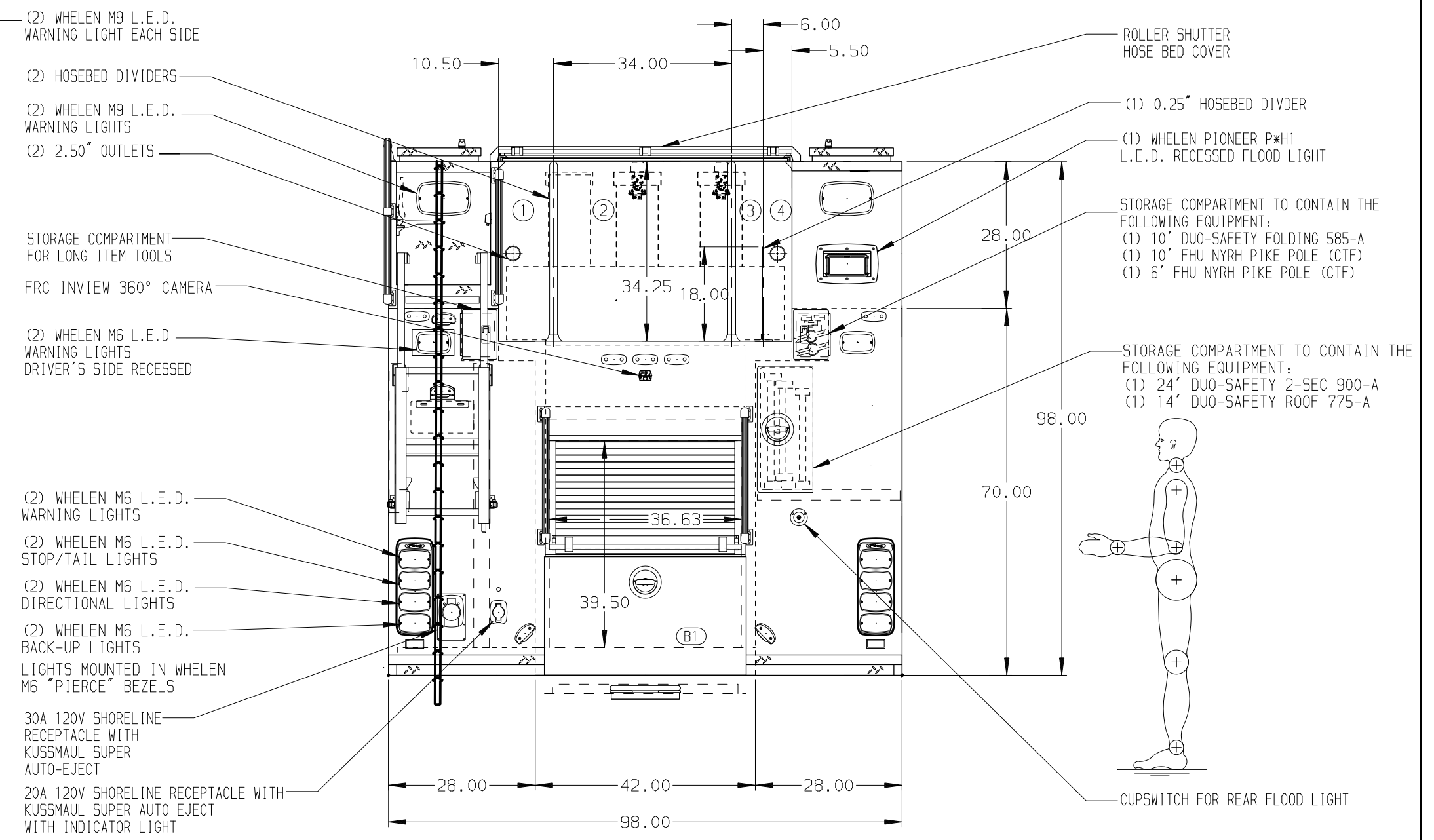


HOSEBED CAPACITIES

- ① 300' OF 2.50" HOSE
- ② 1200' OF 5.00" HOSE
- ③ 200' OF 2.50" HOSE
- ④ 200' OF 2.50" HOSE

SURFACE DESIGNATION AND PATHWAY MARKINGS



(3) WHELEN M6 L.E.D. WARNING LIGHTS EACH SIDE

8.00" NFPA MIN.

1.50

2.00

18.00

1.00

98.50

122.00 CA

61.63 F.C.

62.50

90.50

12.00

12.50

FUEL FILL AND STORAGE AREA WITH A COMMON TRIPLE DOOR

ALUMINUM BODY

SIDE ROLL AND FRONTAL IMPACT PROTECTION

NOTE  
DIMENSIONS SHOWN ARE APPROXIMATE AND ARE SUBJECT TO MINOR DEVIATIONS AS MAY OCCUR OR BE NECESSARY IN CONSTRUCTION.  
MINOR DETAILS NOT SHOWN.

1. WHEEL CHOCKS AND MOUNTING BRACKETS (CTF)
2. BATTERY CHARGER LOCATED IN PUMP PLUMBING AREA
3. BATTERY CHARGER INDICATOR LOCATED ON DRIVER'S SEAT RISER
4. DUAL L.E.D. LIGHT STRIPS LOCATED IN HOSE BED
5. ELASTIC PULL STRAP FOR DOOR ON L51, L52, L53, R51, R52, AND R53
6. FINE FULL WIDTH/DEPTH 1" HIGH ADJUSTABLE SHELVES IN R53
7. FULL WIDTH/DEPTH ADJUSTABLE SHELVES TWO IN R51 AND ONE IN R52
8. ADJUSTABLE SLIDE-OUT TRAYS THREE IN L53, TWO IN L51, AND ONE IN B1
9. ONE SWING-OUT ALUMINUM TOOL BOARD IN L52
10. BRUSHED 5/5 ON THE COMPARTMENT FLOOR OF R53
11. ONE 250# OIL DRY HOPPER LOCATED IN RH1
12. TWO VERTICAL PARTITIONS IN R53
13. EIGHT STORAGE BINS LOCATED IN L52
14. TWO ADJUSTABLE TILT/SLIDE-OUT TRAYS IN L51
15. PARTITION BETWEEN B1/L51 AND B1/R51
16. AIR INLET W/ DISCONNECT UNDER THE DRIVER'S SIDE OF THE BUMPER

REV	DATE	BY	CH	QUANTUM
03SEP19	LST	PPE		CHASSIS DATA
01AUG19	LST	PPE		MAKE
06JUN19	LST	PPE		PIERCE
22MAR19	LST	AZA		MODEL

		JOB NO.	33575
		SCALE	DATE
TITLE	1250-D-795P, 750 GAL OF WATER W/ 45 GAL OF FOAM 189" PUC RESCUE, LADDERS THRU BODY, DELUGE	DRAWN BY	LST
FOR	LEALMAN FIRE DISTRICT SAINT PETERSBURG, FLORIDA	CHECKED BY	AZA
DWG NO.	33575AD	SHEET SIZE	SHEET NO.
		D	1 OF 1