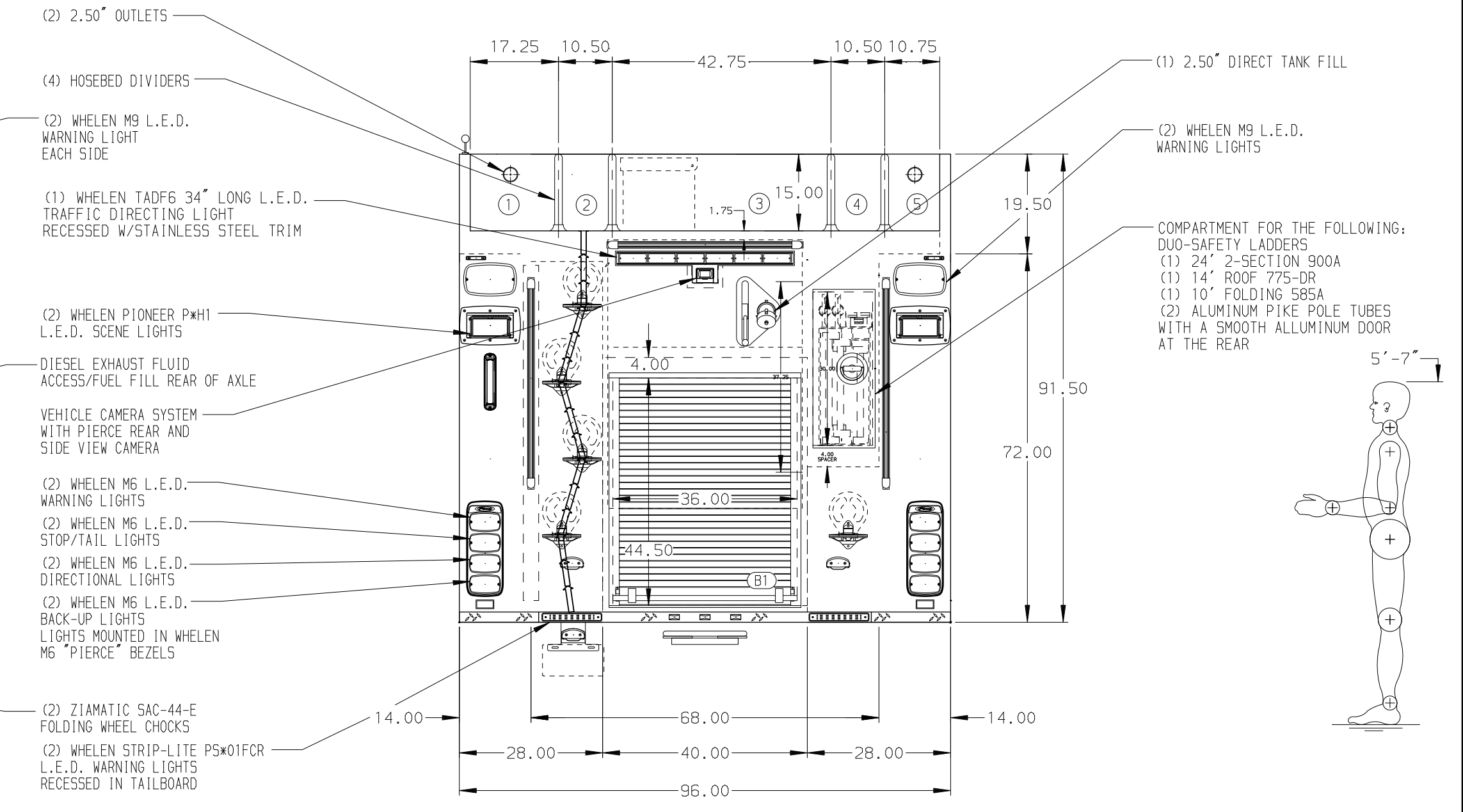
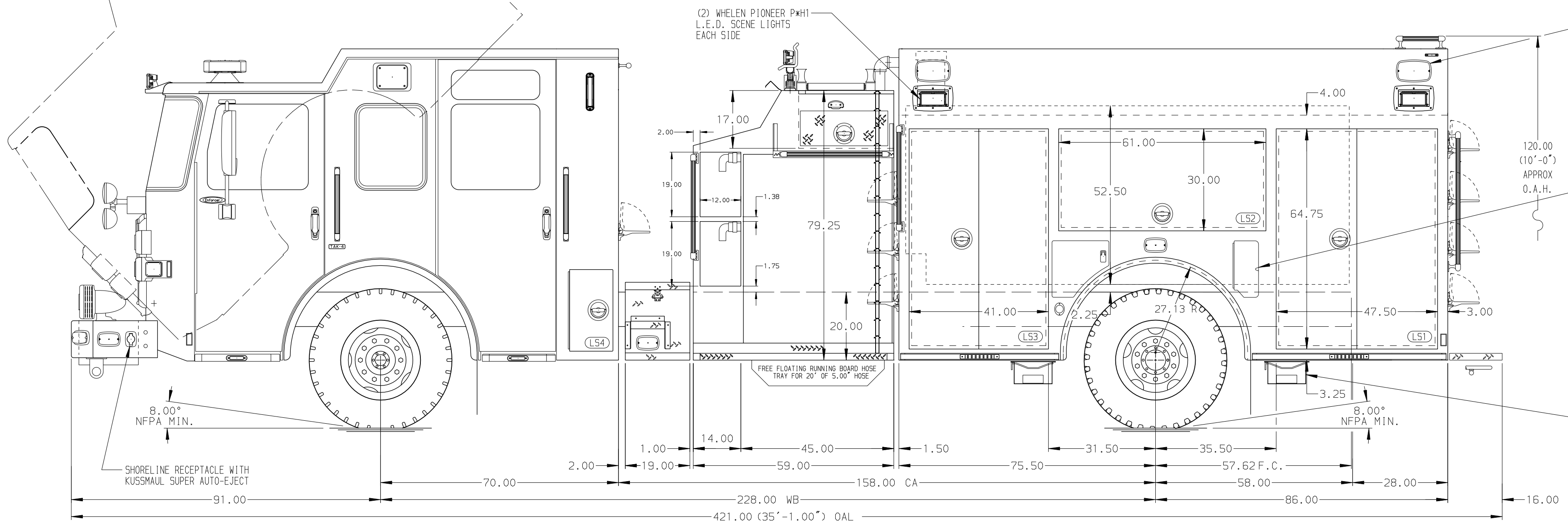


- HOSEBED CAPACITIES**
- ① 300' OF 3.00" D.J. POLY HOSE
 - ② 200' OF 2.50" D.J. POLY HOSE
 - ③ 1000' OF 5.00" D.J. POLY HOSE
 - ④ 200' OF 2.50" D.J. POLY HOSE
 - ⑤ 200' OF 2.50" D.J. POLY HOSE



ALUMINUM BODY

NOTE
 DIMENSIONS SHOWN ARE APPROXIMATE AND ARE SUBJECT TO MINOR DEVIATIONS AS MAY OCCUR OR BE NECESSARY IN CONSTRUCTION.
 MINOR DETAILS NOT SHOWN.

- 1. BATTERY CHARGER LOCATED BEHIND DRIVER SEAT
- 2. BATTERY CHARGE INDICATOR LOCATED ON DRIVER'S SEAT RISER
- 3. PULL STRAP ON DOOR IN COMPARTMENT LS2,RS2
- 4. ONE FULL WIDTH/DEPTH ADJUSTABLE SHELF IN COMPARTMENTS LS1,LS3,B1, TWO IN ,RS1,RS3
- 5. ONE ADJUSTABLE TILTING SLIDE-OUT TRAY IN COMPARTMENT LS1,LS2,LS3
- 6. ONE FLOOR MOUNTED SLIDE-OUT TRAY IN COMPARTMENT LS1,RS1,RS3,B1
- 7. SWING-OUT TOOL BOARD WITH PEGBOARD PATTERN IN COMPARTMENT RS2
- 8. SLIDE-OUT FLOOR MOUNTED OIL DRY HOPPER IN COMPARTMENT RS3
- 9. CTECH DRAWER ASSEMBLY IN COMPARTMENT LS3
- 10. PARTITION BETWEEN COMPARTMENTS LS1/B1 AND RS1/B1
- 11. 120V DUPLEX RECEPTACLE LOCATED IN COMPARTMENT LS1
- 12. AIR INLET WITH DISCONNECT COUPLING IN 0.5' STEP WELL

		JOB NO.	33621
		SCALE	DATE
1500-D-1000P, 161", FULL HEIGHT, FULL DEPTH DS, FOLDR PS (2) SPD-LAYS, DELUGE, BOOSTER REEL		DRAWN BY	JWO
CONVERSE FIRE DEPARTMENT CONVERSE, SOUTH CAROLINA		CHECKED BY	CDU
DWG NO. 33621AD		SHEET SIZE	D
		SHEET NO.	1 OF 1

REV	DATE	BY	CH	ENFORCER
1	13AUG19	JWO	JGO	CHASSIS DATA
2	24JUN19	JWO	JGO	MAKE
3	04JUN19	JWO	JGO	PIERCE
4	15MAR19	JWO	CDU	MODEL