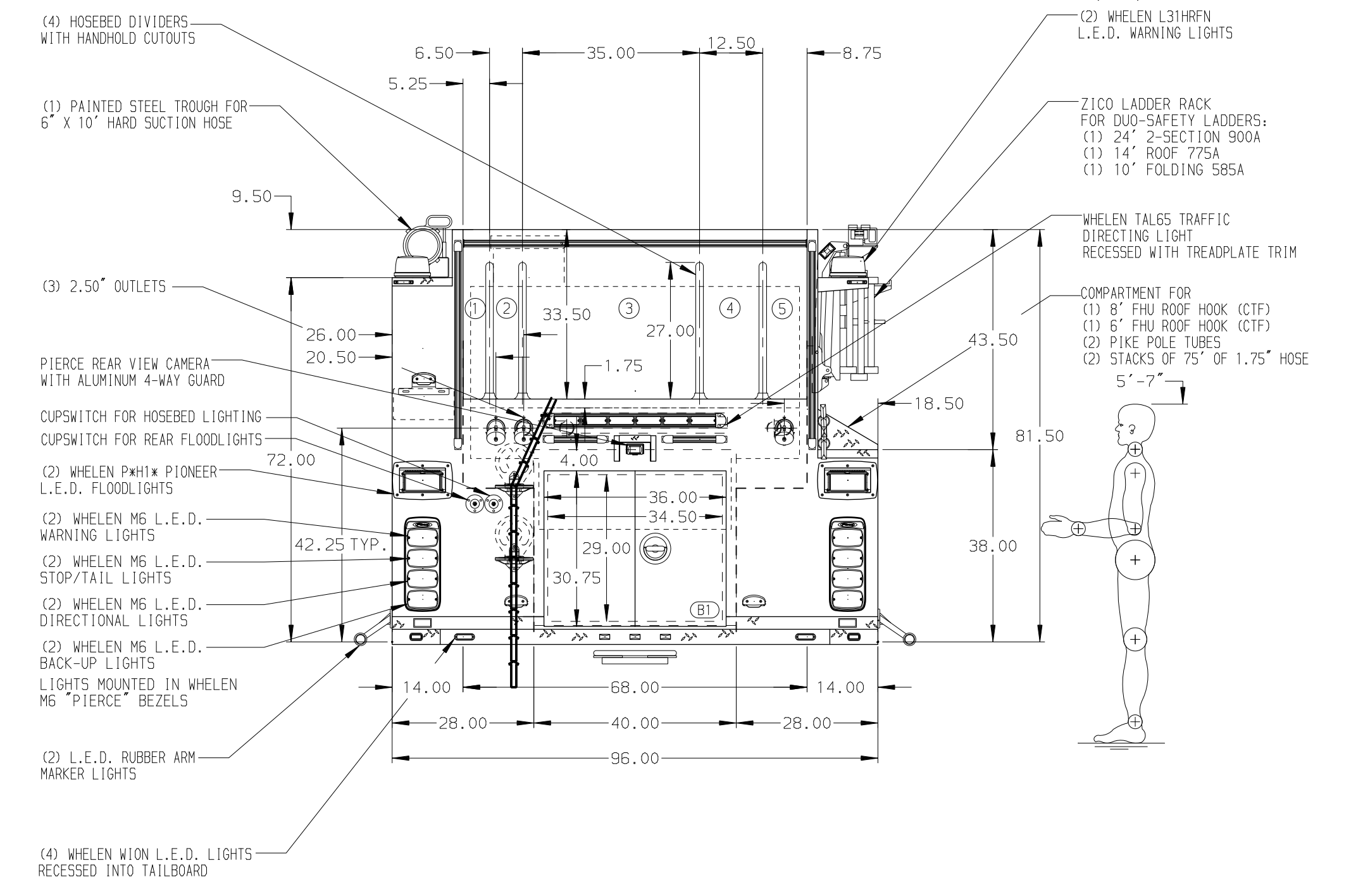
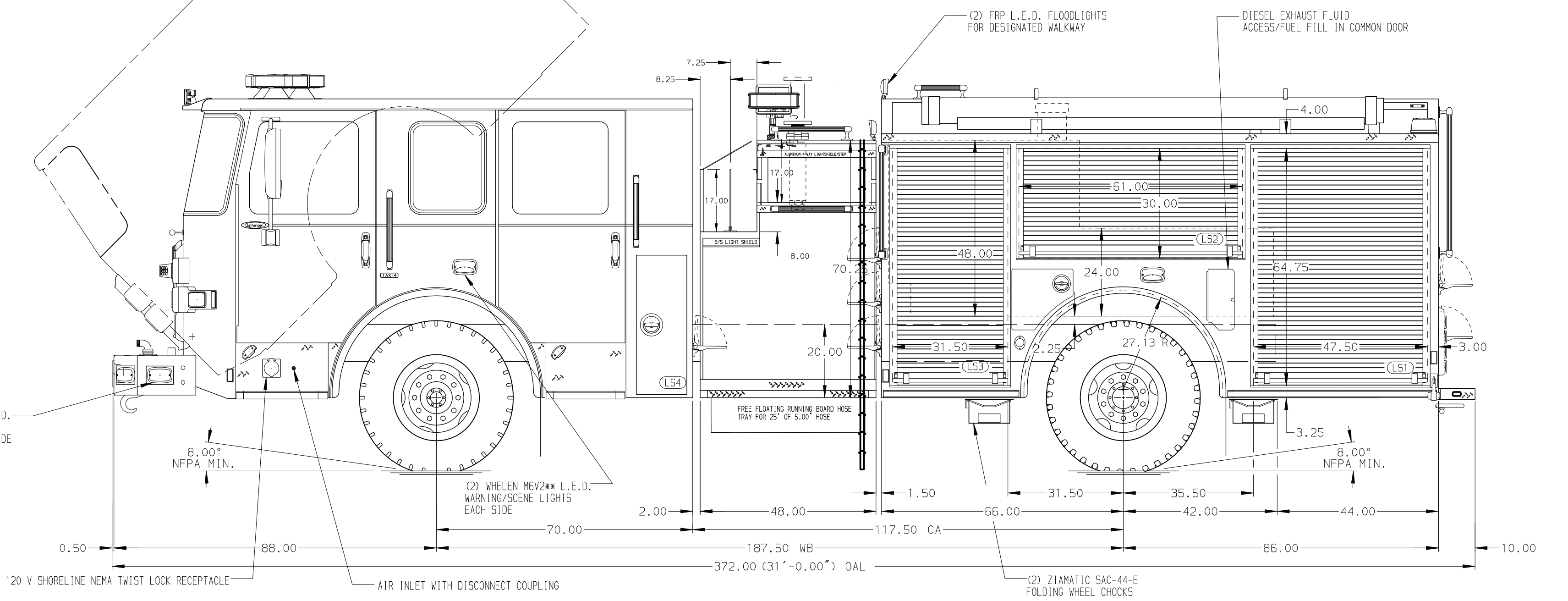


- HOSEBED CAPACITIES
- ① 250' OF 1.75" HOSE
 - ② 250' OF 2.50" HOSE
 - ③ 1000' OF 5.00" HOSE
 - ④ 300' OF 3.00" HOSE
 - ⑤ 250' OF 3.00" HOSE



ALUMINUM BODY

SIDE ROLL AND FRONTAL IMPACT PROTECTION

NOTE
DIMENSIONS SHOWN ARE APPROXIMATE AND ARE SUBJECT TO MINOR DEVIATIONS AS MAY OCCUR OR BE NECESSARY IN CONSTRUCTION. MINOR DETAILS NOT SHOWN.

1. INSTA-CHAIN AUTOMATIC TIRE CHAINS TO BE PROVIDED AT REAR
2. BATTERY CHARGER LOCATED BEHIND DRIVER SEAT
3. BATTERY CHARGER INDICATOR LOCATED ON DRIVER'S SEAT RISER
4. DUAL L.E.D. LIGHT STRIPS LOCATED IN HOSE BED
5. PULL STRAPS FOR DOORS IN LS1, LS2, AND LS3
6. DRIP PAN GUARD FOR ROLL-UP DOOR (LS1, LS2, LS3, RS1, AND RS2)
7. ONE FULL WIDTH/DEPTH ADJUSTABLE SHELF IN LS1, LS3, B1, RS1, AND RS2
8. ONE ADJUSTABLE SLIDE-OUT TRAY IN LS3
9. ONE FLOOR MOUNTED SLIDE-OUT TRAY IN B1
10. L-SHAPED SLIDE-OUT TOOL BOARD WITH PEGBOARD PATTERN IN LS1
11. PARTITION BETWEEN COMPARTMENTS LS1/B1 AND RS1/B1
12. ONE VERTICAL PARTITION IN LS1
13. ALUMINUM PEGBOARD WITH TRACKS ON THE REAR WALL OF LS1, LS2, AND LS3
14. 120V NEMA DUPLEX RECEPTACLE IN THE DRIVER'S SIDE EMS COMPARTMENT
15. 120V NEMA DUPLEX RECEPTACLE IN LS1 AND RS1

REV	DATE	BY	CH	ENFORCER
28MAY19	LST	DTS		CHASSIS DATA
10MAY19	LST	DTS		MAKE
17APR19	LST	CSH		PIERCE
14MAR19	LST	AZA		MODEL

		JOB NO.	33633
		SCALE	DATE
TITLE	1250-D-750 GAL POLY, 152" FH FDLER ZICO LADDER RACK, (2) X-LAYS, DELUGE	DRAWN BY	LST
FOR	CHESHIRE FIRE DEPARTMENT CHESHIRE, CONNECTICUT	CHECKED BY	AZA
DWG NO.	33633AD	SHEET SIZE	SHEET NO.
		D	1 OF 1