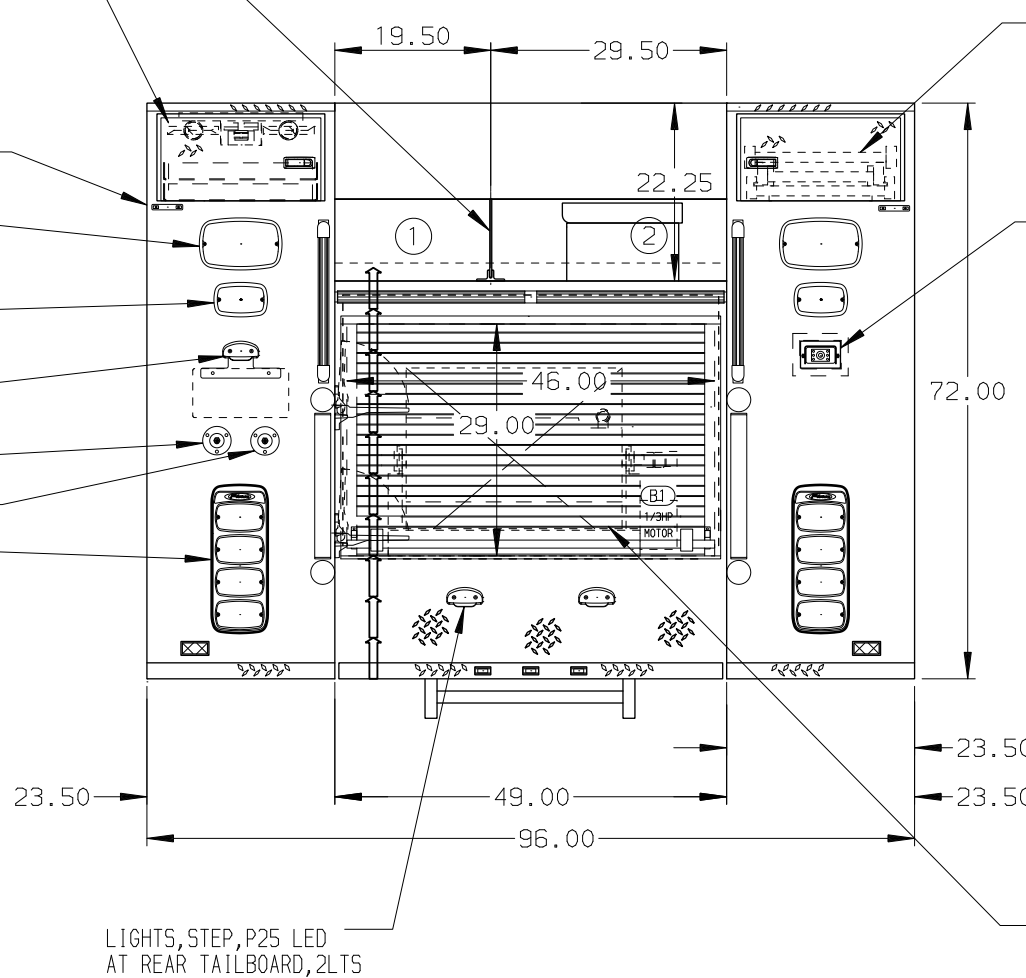


- HOSEBED CAPACITIES
- (1) 400' OF 1.50" D.J. POLYESTER HOSE
  - (2) 300' OF 2.50" D.J. POLYESTER HOSE

- (1) DIVIDER, .25" UNPAINTED HOSE BED, WITH HAND HOLD
- (2) BACKBOARDS, 72" L X 18" W X 2.0" THICK POLE, PIKE 6" FIRE HOOKS UNLIMITED, NEW YORK ROOF HOOK STEEL RH-B W/GAS SHUT OFF POLE, PIKE 6" FIRE HOOKS UNLIMITED, FIBERGLASS, APH-B, GAS SHUT OFF (2) TUBES, ALUM, PIKE POLE STORAGE DUO-SAFETY FOLDING LADDER (1) 9" 585-A

- LIGHTS, CLEARANCE/MARKER/ID, REAR, FRP LED BAR & P25 LED, 4 LTS
- LIGHTS, REAR/SIDE UP ZONE, WHELEN M6KC SIDE LED, WHELEN M9KC REAR LED
- (2) WHELEN M6ZC LED REAR SCENE LIGHTS
- BRACKET, LICENSE PLATE & LIGHT, P25 LED
- CUP SWITCH, HOSE BED LIGHTS
- CUP SWITCH, REAR SCENE LIGHTS
- (2) REAR ZONE LOWER, WHELEN M6 LED, CLEAR LENS
- (2) WHELEN M6 L.E.D. STOP/TAIL LIGHTS
- (2) WHELEN M6 L.E.D. DIRECTIONAL LIGHTS
- (2) WHELEN M6 L.E.D. BACK-UP LIGHTS
- LIGHTS MOUNTED IN WHELEN M6 "PIERCE" BEZELS



## ALUMINUM BODY

### NOTE

DIMENSIONS SHOWN ARE APPROXIMATE AND ARE SUBJECT TO MINOR DEVIATIONS AS MAY OCCUR OR BE NECESSARY IN CONSTRUCTION. MINOR DETAILS NOT SHOWN.



MANUFACTURING INC.

BRADENTON, FLORIDA

JOB NO. 33661

SCALE 1:24

DATE 31MAY19

DRAWN BY JLA

03JUN19

CHK'D BY RWI

SHEET NO. 1 OF 1

SHEET SIZE D

TITLE 1000-D-300 POLY, 84" CA, MINI PUMPER BODY (2) SPEEDLAYS

FOR CLAYTON COUNTY FIRE DEPARTMENT RIVERDALE, GEORGIA

DRWG. NO. 33661 AD

REV.	DATE	BY	CHK'D	CHASSIS DATA
1	11SEP19	JLA	CAG	CHASSIS
2	10SEP19	JLA	CAG	FORD
3	14JUN19	JLA	RWI	MODEL F-550 4X4