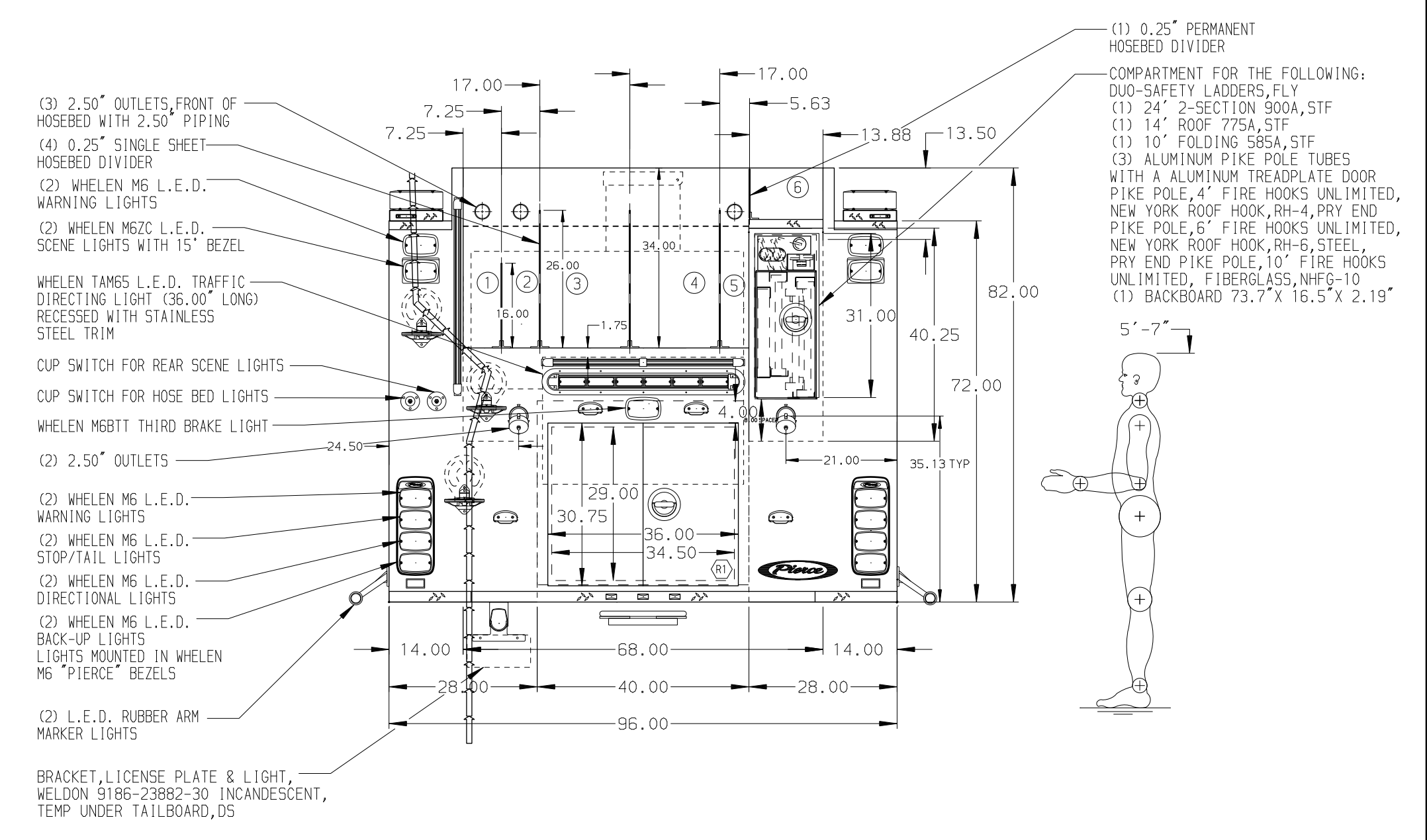
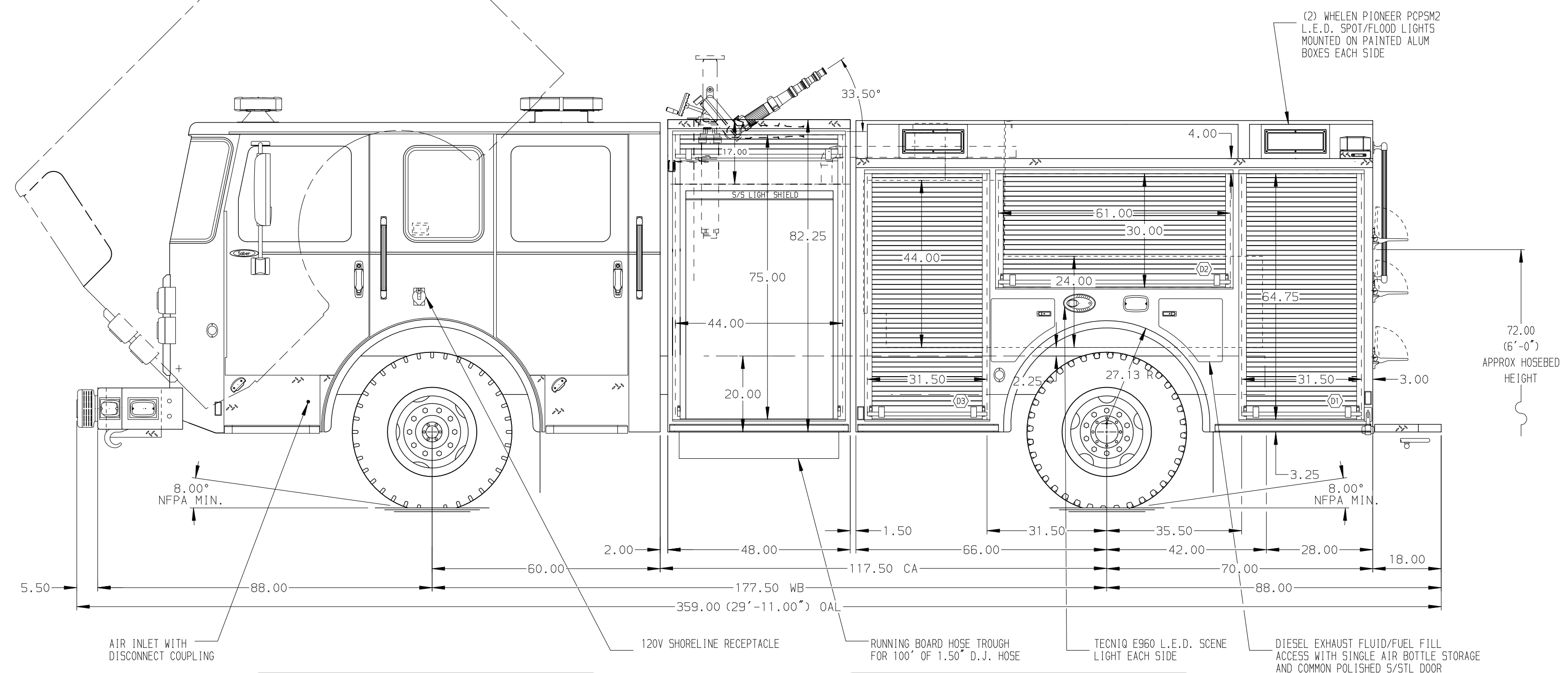


- HOSEBED CAPACITIES**
- ① 250' OF 1.75" D.J. POLY HOSE
 - ② 250' OF 1.75" D.J. POLY HOSE
 - ③ 750' OF 3.00" D.J. POLY HOSE
 - ④ 750' OF 3.00" D.J. POLY HOSE
 - ⑤ 250' OF 2.50" D.J. POLY HOSE
 - ⑥ 150' OF 1.75" D.J. POLY HOSE



ALUMINUM BODY

MAXIMUM O.A.L. 359.00"

MAXIMUM O.A.H. 111.00"

NOTE
 DIMENSIONS SHOWN ARE APPROXIMATE AND ARE SUBJECT TO MINOR DEVIATIONS AS MAY OCCUR OR BE NECESSARY IN CONSTRUCTION. MINOR DETAILS NOT SHOWN.

REV	DATE	BY	CH	SABER FR
13JUN19	CRH	CAG		MAKE
28MAY19	JLA	CAG		PIERCE
22MAR19	KLE	SBR		MODEL

		JOB NO.	33747-01-04
		SCALE	1:24
TITLE 1500-D-500P, 136", FULL HEIGHT, D.S. & P.S. DELUGE, REELS, 48" SIDE CONTROL W/ENCLOSURE		DRAWN BY	KLE
		CHECKED BY	JBL
FOR CITY OF COLORADO SPRINGS COLORADO SPRINGS, CO		DWG NO.	33747AD
		SHEET NO.	1 OF 1