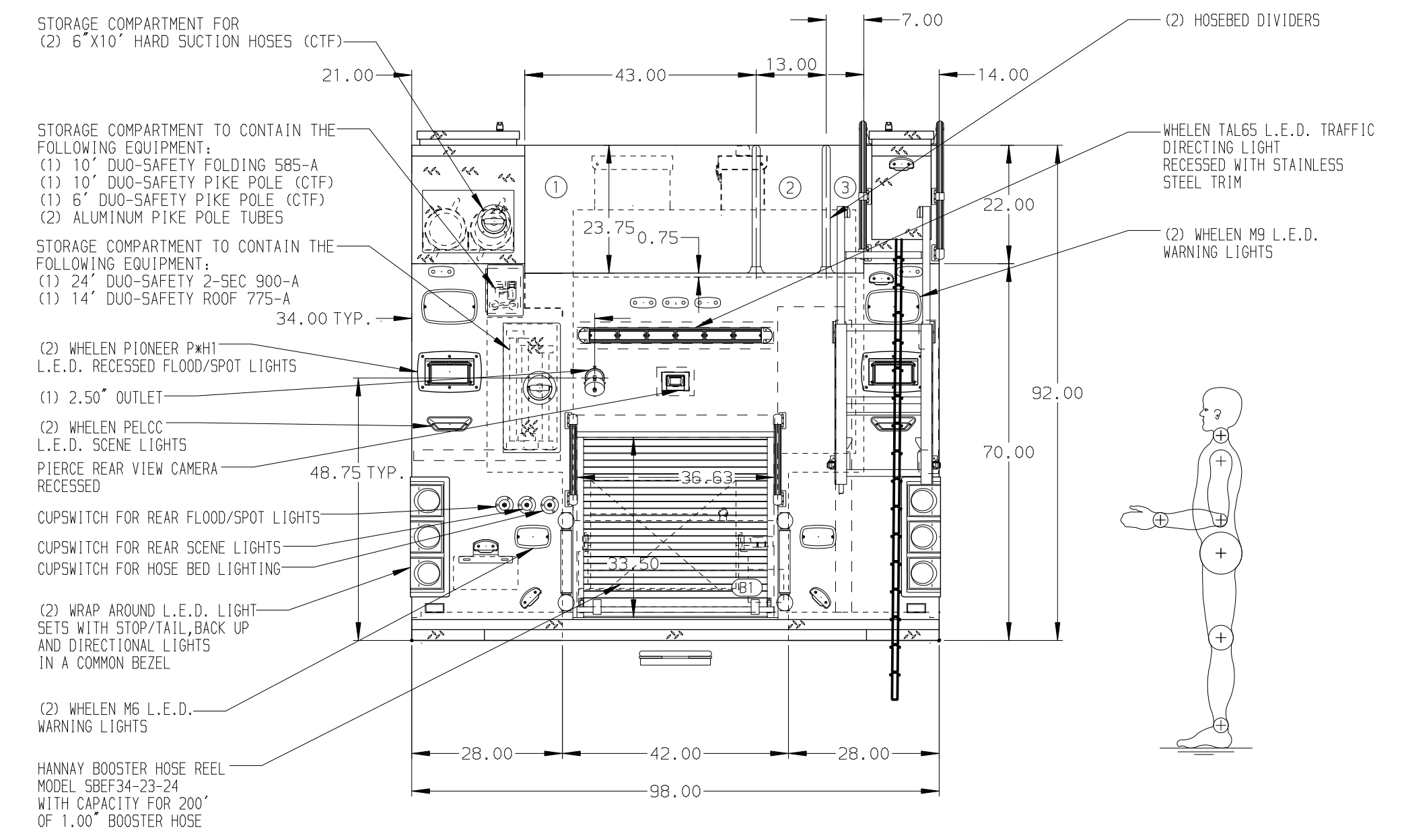
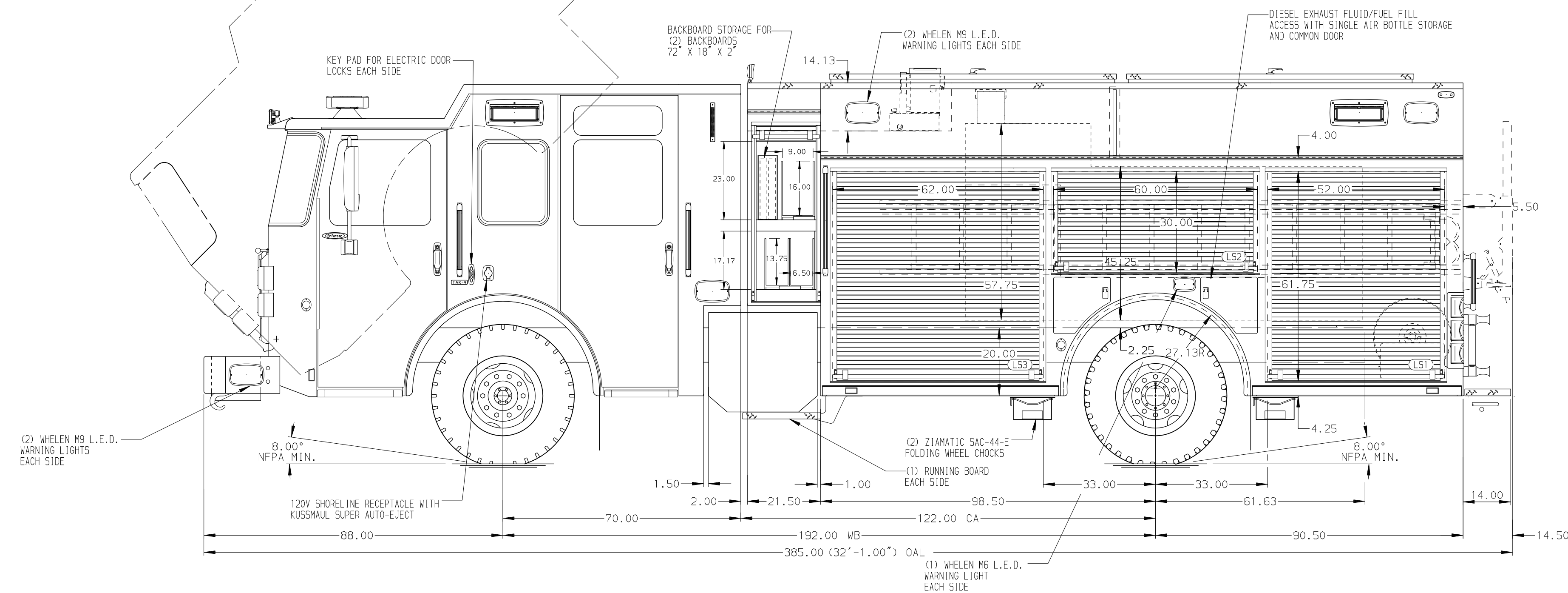


- HOSEBED CAPACITIES
- ① 1200' OF 5.00" HOSE
 - ② 500' OF 3.00" HOSE
 - ③ 200' OF 1.75" HOSE



ALUMINUM BODY

SIDE ROLL AND FRONTAL IMPACT PROTECTION

NOTE
 DIMENSIONS SHOWN ARE APPROXIMATE AND ARE SUBJECT TO MINOR DEVIATIONS AS MAY OCCUR OR BE NECESSARY IN CONSTRUCTION.
 MINOR DETAILS NOT SHOWN.

1. ONSPOUT AUTOMATIC TIRE CHAINS TO BE PROVIDED AT THE REAR
2. AIR OUTLET WITH SHUT OFF VALVE ON D.S. PUMP PANEL
3. BATTERY CHARGER LOCATED BEHIND THE DRIVER'S SEAT
4. BATTERY CHARGE INDICATOR LOCATED ON DRIVER'S SEAT RISER
5. DUAL L.E.D. LIGHT STRIPS LOCATED IN HOSE BED
6. FULL WIDTH/DEPTH ADJUSTABLE SHELVES TWO IN L51, R51, AND R53 AND ONE IN L53
7. ONE FLOOR MOUNTED SLIDE-OUT TRAY IN L51, R51, AND R53
8. ONE SWING-OUT ALUMINUM TOOL BOARD IN L52
9. CTECH THREE DRAWER ASSEMBLY IN L53
10. 120V OIL DRY HOPPER IN RH2
11. 120V DUPLEX RECEPTACLE IN R51

REV	DATE	BY	CH	ENFORCER
1	16JUL19	LST	MSA	PIERCE
2	13JUN19	LST	MSA	PIERCE

		JOB NO.	33773
		SCALE	DATE
TITLE	1500-D-1000P, 980 GAL OF WATER W/ 20 GAL FOAM CELL 189" PUC PMPR, LDRS. BTWN. TANK & S. SHEET, (3) X-LAYS	DRAWN BY	LST
FOR	CHUBBUCK FIRE DEPARTMENT CHUBBUCK, IDAHO	CHECKED BY	WKL
DWG NO.	33773AD	SHEET SIZE	SHEET NO.
		D	1 OF 1