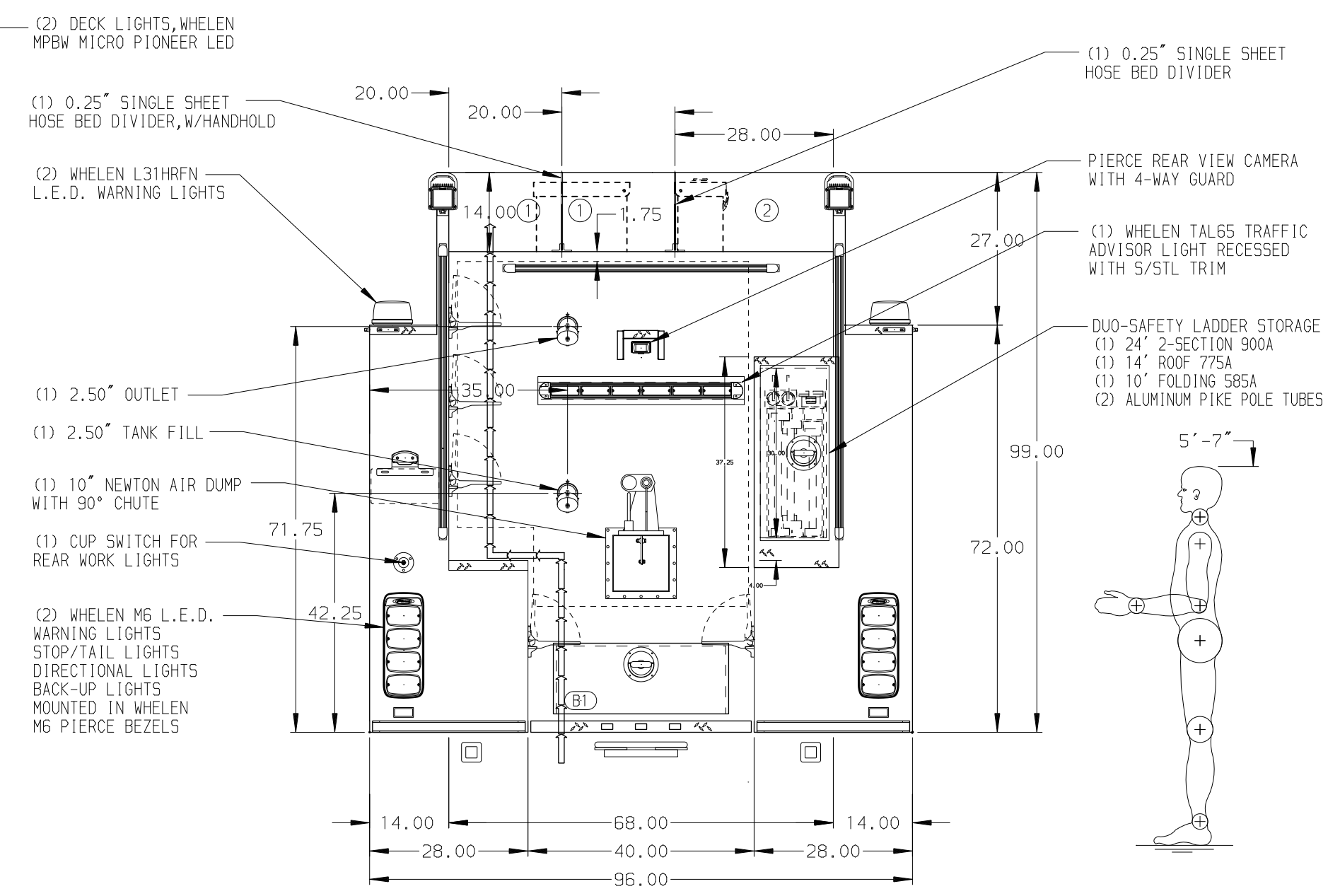
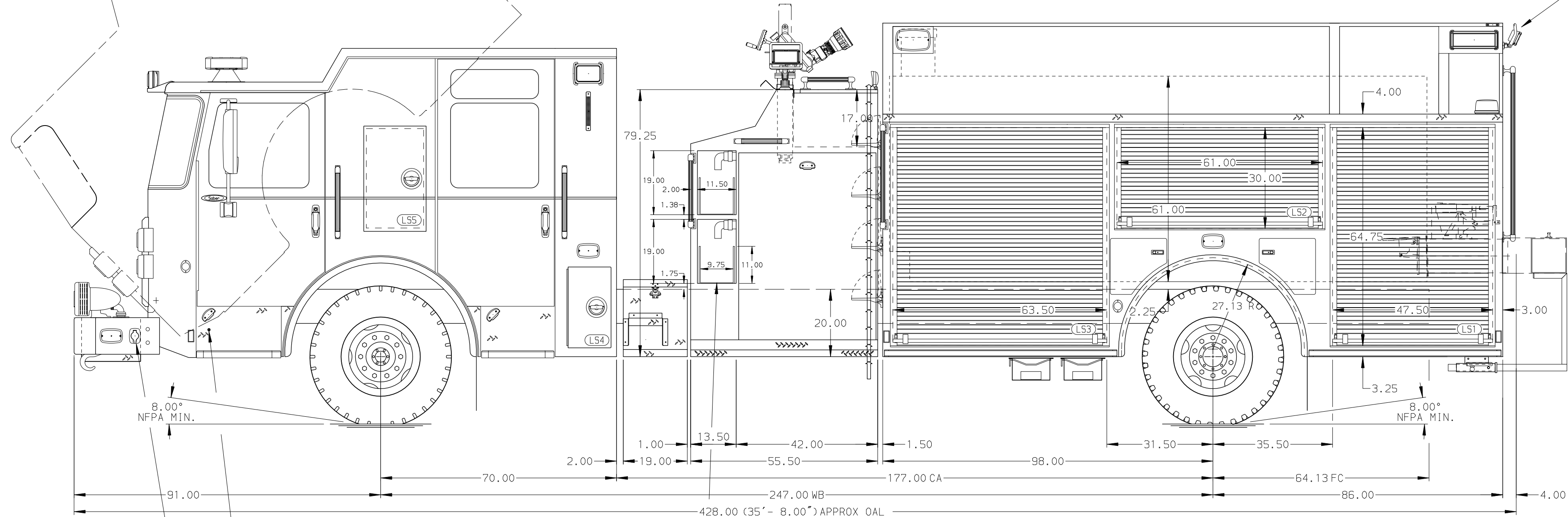


HOSEBED CAPACITIES

① - 1000' OF 5.00" HOSE

② - 1000' OF 3.00" HOSE



ALUMINUM BODY

SIDE ROLL AND FRONTAL IMPACT PROTECTION

NOTE
DIMENSIONS SHOWN ARE APPROXIMATE AND ARE SUBJECT TO MINOR DEVIATIONS AS MAY OCCUR OR BE NECESSARY IN CONSTRUCTION. MINOR DETAILS NOT SHOWN.

REV	DATE	BY	CH	SABER FR
31MAY19	JLA	GSC		
24APR19	JLA	GSC		
29MAR19	AMI	CDU		

		JOB NO.	33786
		SCALE	1:24
CHASSIS DATA MAKE MODEL DWG NO.	TITLE	1500-D-1800P, 1775 WATER, 25 FOAM, 184" PUMPER BODY (2) SPEEDLAYS, NEWTON REAR DUMP, METAL LADDER RACK	DATE
	FOR	BRAZOS COUNTY DISTRICT 2 KURTEN, TEXAS	
	DRAWN BY	AMI	20MAR19
	CHECKED BY	KOU	20MAR19
	SHEET SIZE	D	SHEET NO. 1 OF 1

33786AD