

RIGHT SIDE COMPARTMENTS CONTAIN THE FOLLOWING:

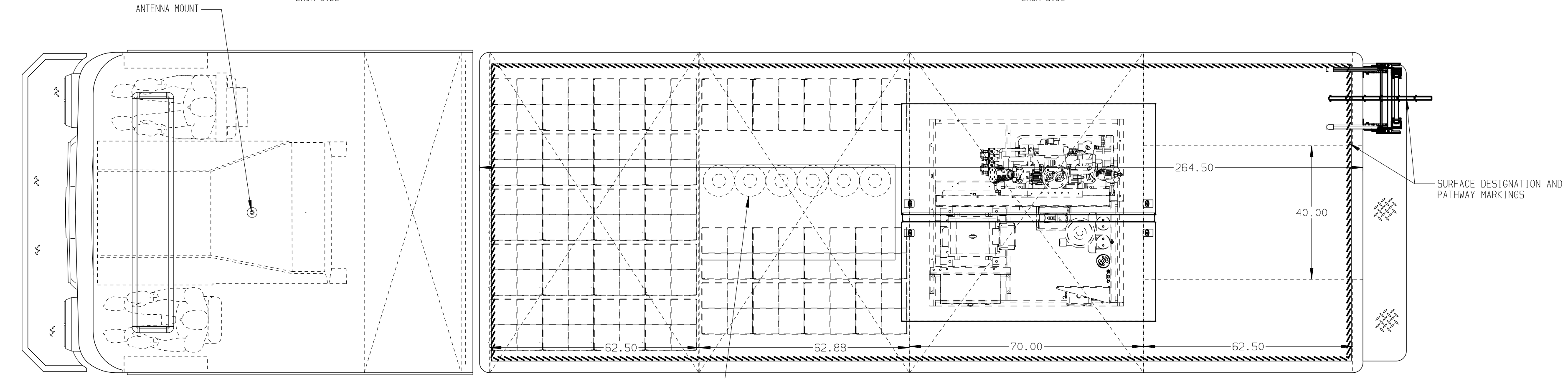
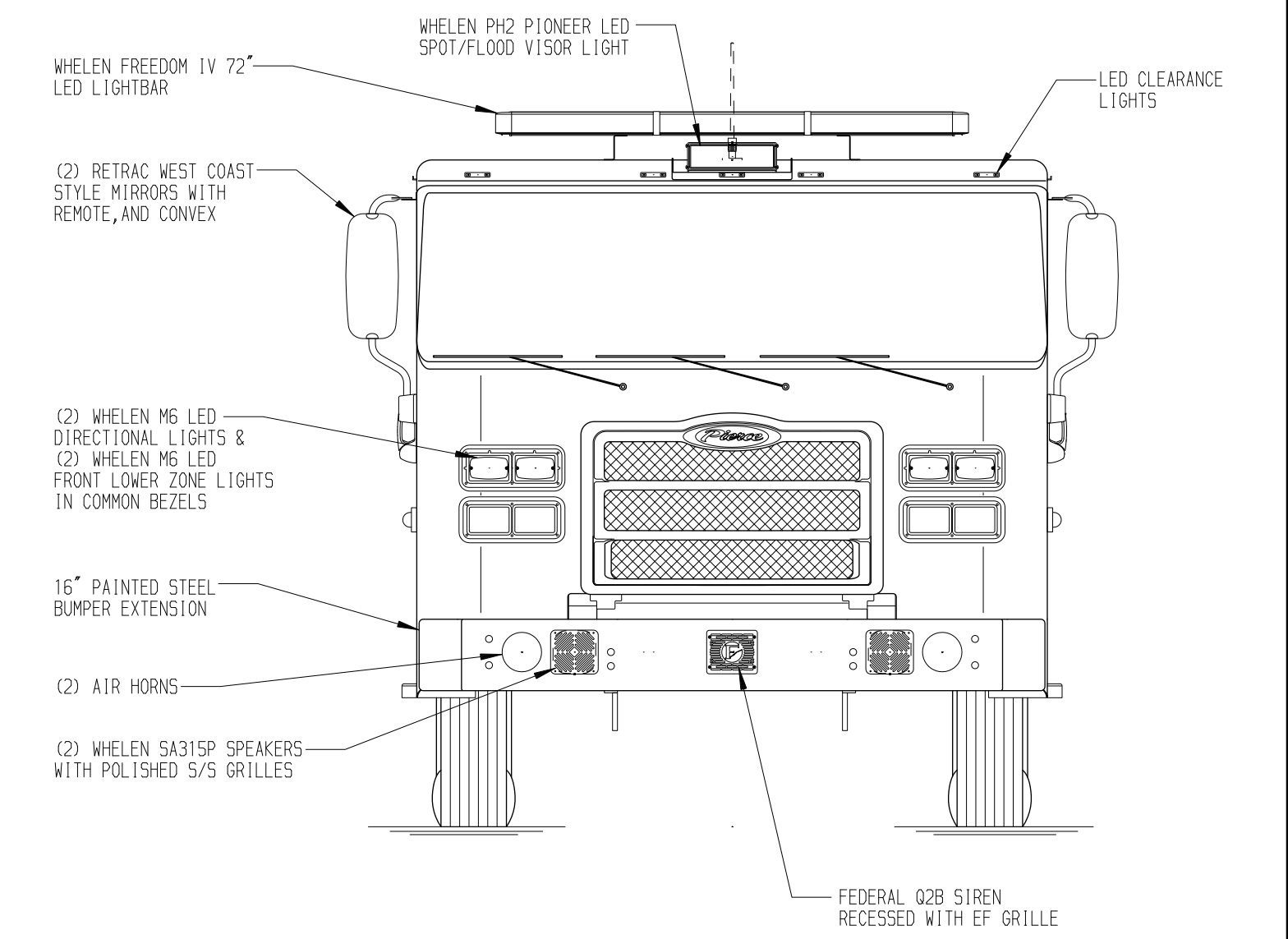
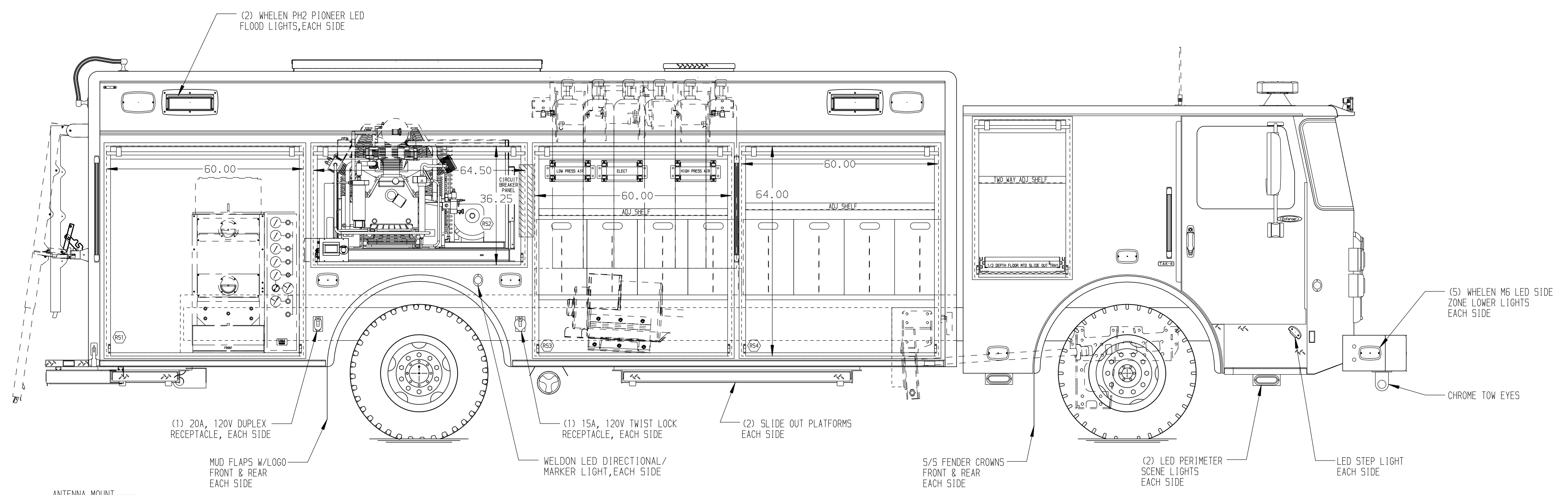
COMPARTMENT RS1 CONTAINS:
 - MOUNTING FOR CUSTOMER SUPPLIED "SPACESAVER" 4-BOTTLE FILL ENCLOSURE WITH CASCASE SYSTEM CONTROL PANEL

COMPARTMENT RS2 CONTAINS:
 - (1) BAUER K22, 42-30-E3 BREATHING AIR COMPRESSOR
 - (1) COMPRESSOR CONTROL PANEL
 - (1) CIRCUIT BREAKER PANEL
 - (1) GENERATOR METER PANEL

COMPARTMENT RS3 CONTAINS:
 - (1) HORIZONTAL FLOOR EXTENSION
 - (1) ELECTRIC CORD REEL WITH CAPACITY FOR 200' OF 10/4 YELLOW CORD
 - (1) HIGH PRESSURE BREATHING AIR REEL WITH 300' OF HOSE
 - (1) LOW PRESSURE AIR REEL WITH 200' OF HOSE
 - (4) 4-BOTTLE SCBA CARRIERS
 - (1) STD DP ADJUSTABLE SHELF

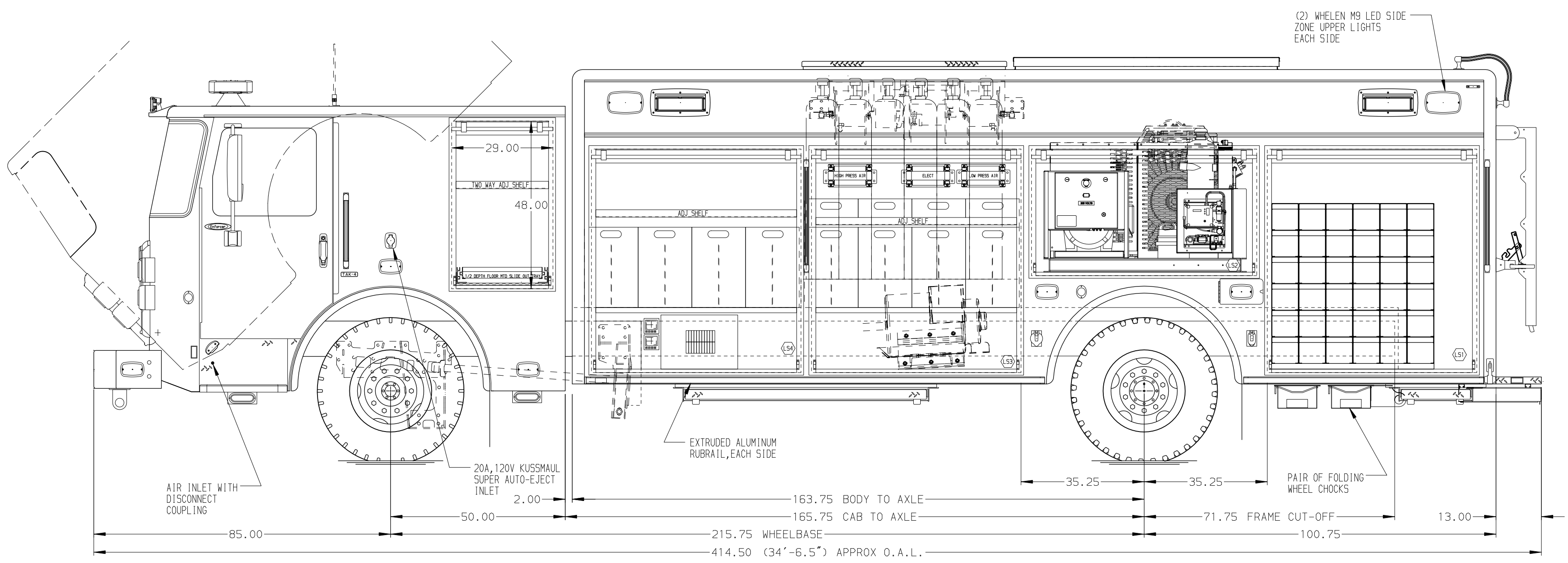
COMPARTMENT RS4 CONTAINS:
 - (1) CAB LIFT CONTROLLER
 - (1) 1/2 DEPTH ADJUSTABLE SHELF
 - (1) HORIZONTAL FLOOR EXTENSION
 - (1) 4-BOTTLE SCBA CARRIERS

COMPARTMENT RS5 CONTAINS:
 - (1) TWO WAY ADJUSTABLE SHELF
 - (1) 1/2 DEPTH FLOOR MOUNTED SLIDE OUT TRAY



REAR COMPARTMENT CONTAINS THE FOLLOWING:

COMPARTMENT B1 CONTAINS:
 - (1) HORIZONTAL FLOOR EXTENSION
 - (1) 60" DP ADJUSTABLE SHELF



LEFT SIDE COMPARTMENTS CONTAIN THE FOLLOWING:

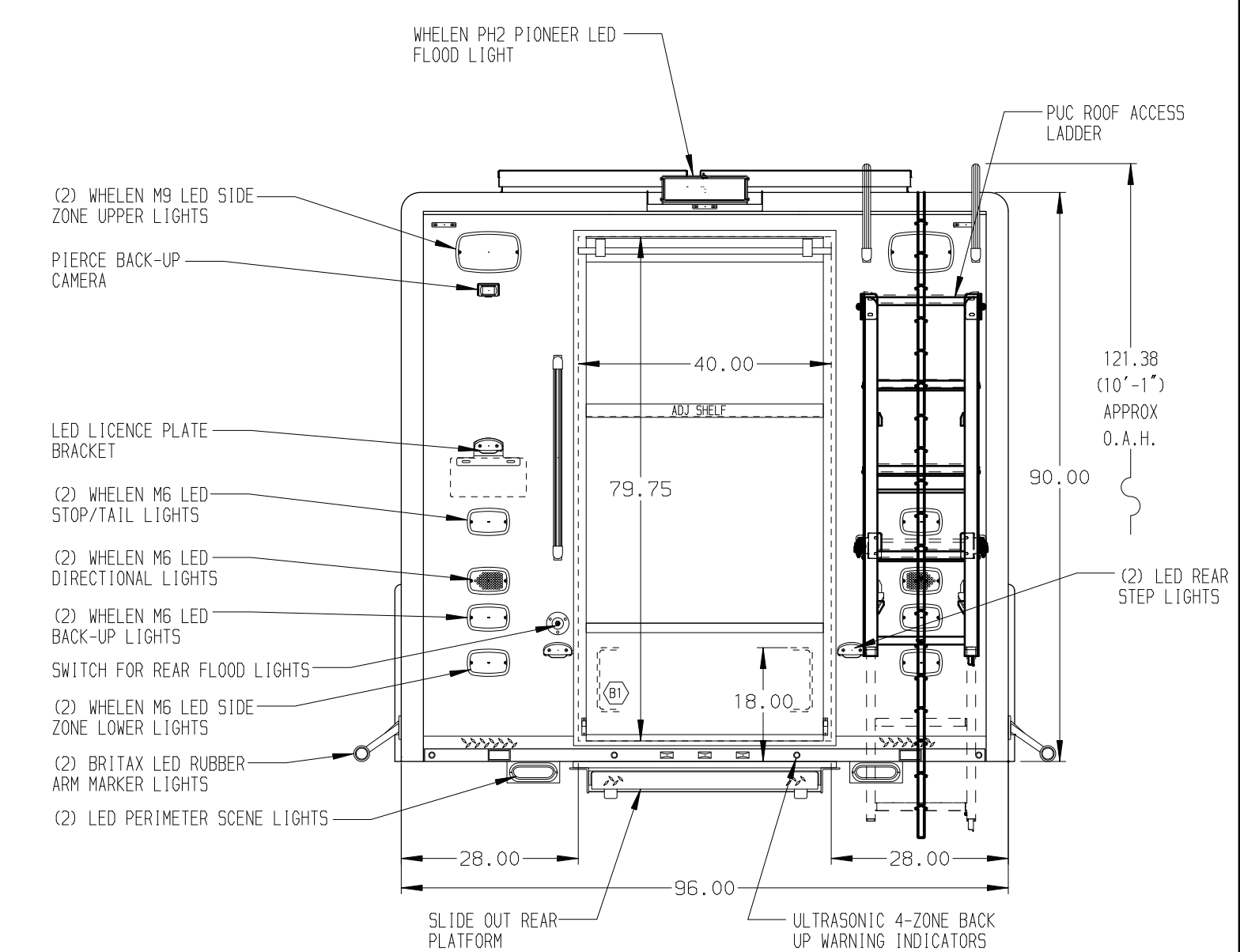
COMPARTMENT LS1 CONTAINS:
 - (1) RACK FOR 36 SCBA BOTTLES

COMPARTMENT LS2 CONTAINS:
 - (1) BAUER K22, 42-30-E3 BREATHING AIR COMPRESSOR

COMPARTMENT LS3 CONTAINS:
 - (1) STD DP ADJUSTABLE SHELF
 - (8) 4-BOTTLE SCBA CARRIERS
 - (1) HORIZONTAL FLOOR EXTENSION
 - (1) ELECTRIC CORD REEL WITH CAPACITY FOR 200' OF 10/4 YELLOW CORD
 - (1) HIGH PRESSURE BREATHING AIR REEL WITH 300' OF HOSE
 - (1) LOW PRESSURE AIR REEL WITH 200' OF HOSE

COMPARTMENT LS4 CONTAINS:
 - (1) 1/2 DEPTH ADJUSTABLE SHELF
 - (1) HORIZONTAL FLOOR EXTENSION
 - (1) 4-BOTTLE SCBA CARRIERS

COMPARTMENT LS5 CONTAINS:
 - (1) TWO WAY ADJUSTABLE SHELF
 - (1) 1/2 DEPTH FLOOR MOUNTED SLIDE OUT TRAY



NOTE
 DIMENSIONS SHOWN ARE APPROXIMATE AND ARE SUBJECT TO MINOR DEVIATIONS AS MAY OCCUR OR BE NECESSARY IN CONSTRUCTION. MINOR DETAILS NOT SHOWN.

- NOTES:**
- LIMA 40kW THREE PHASE PTO DRIVEN GENERATOR WITH SPLASH GUARD LOCATED BETWEEN THE FRAME RAILS
 - POLISHED 5/5 SCUFFPLATES ON CAB DOOR JAMBS
 - FLOOR IN CAB TO BE PADDED RUBBER
 - KUSSMAUL 1200 CHARGER LOCATED BEHIND THE DRIVER'S SEAT
 - BATTERY CHARGE INDICATOR LOCATED ON DRIVER'S SEAT RISER
 - 5/5 "L"-SHAPED GUARDS OVER ALL BODY ROLL-UP DOORS
 - PIERCE DUAL LED STRIP LIGHTS LOCATED IN ALL BODY COMPARTMENTS

CLEAR DOOR WIDTH KEY		CHASSIS DATA
AMORR ROLL UP DOORS:	-2 1/4"	19NOV19 ALZ AZU MAKE
CORTITE ROLL UP DOORS:	-2 1/2"	11OCT19 ALZ AZU PIERCE
PIERCE DOUBLE LIP DOORS:	-4 1/4"	19JUL19 DHE AZU MODEL
PIERCE LIFT-UP LAP DOORS:	-1 1/2"	REV DATE BY CH EN5000
(EX: 60" F-F - 2 1/4" = 57 3/4" CLEAR)		
(F-F) = FRAME TO FRAME		

		JOB NO.	33810
		SCALE	DATE
TITLE	HEAVY DUTY RESCUE NON-WALKIN	DRAWN BY	-
FOR	JACKSONVILLE FIRE AND RESCUE JACKSONVILLE, FL	CHECKED BY	AZU 16JUL19
DWG NO.	33810AD	SHEET SIZE	SHEET NO.
		D	1 OF 1