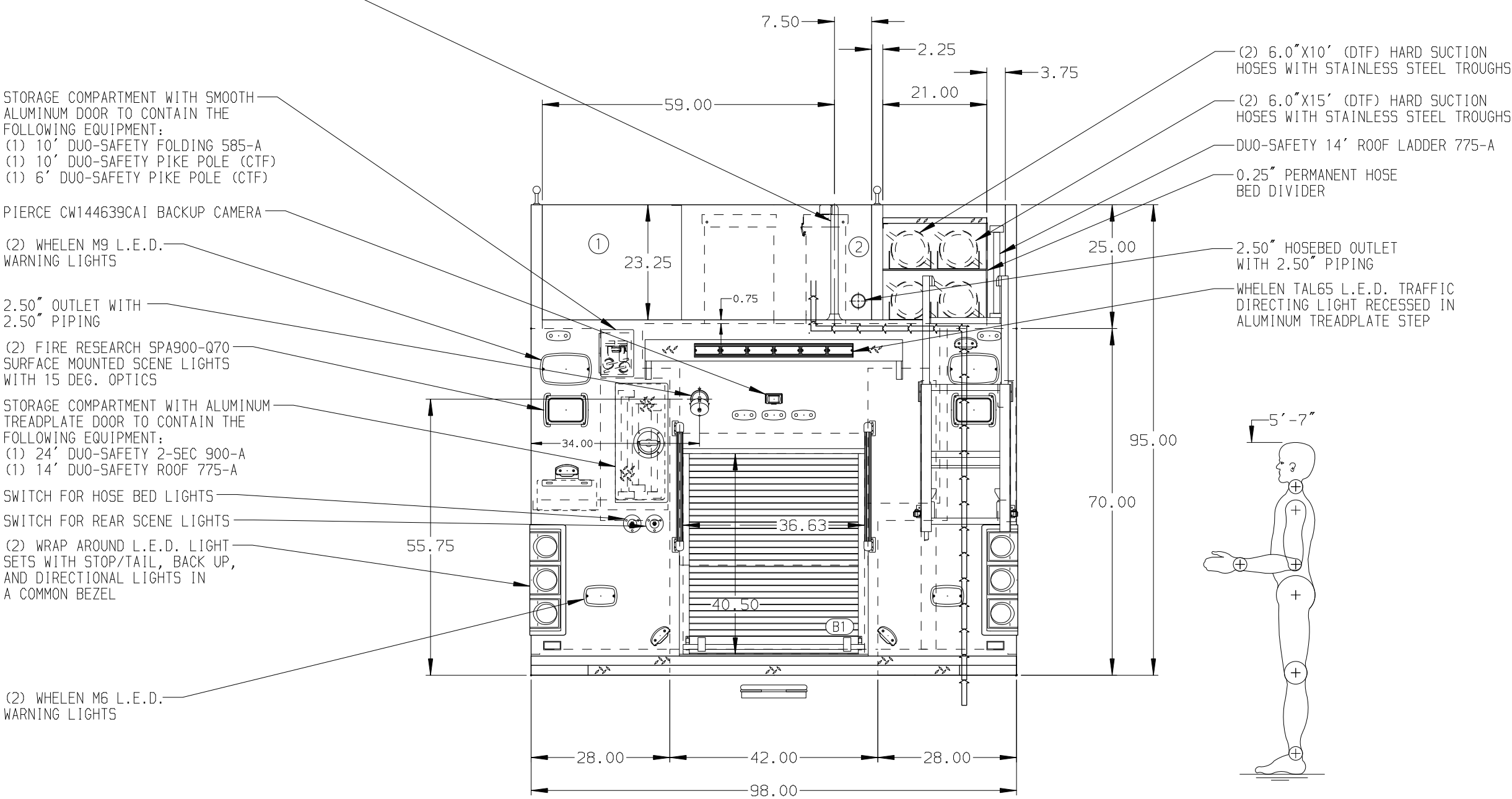


- HOSEBED CAPACITIES
- ① 2400' OF 5.00" D.J. POLY HOSE
 - ② 300' OF 3.00" D.J. POLY HOSE



(ALUMINUM BODY) (SIDE ROLL AND FRONTAL IMPACT PROTECTION)

NOTE
DIMENSIONS SHOWN ARE APPROXIMATE AND ARE SUBJECT TO MINOR DEVIATIONS AS MAY OCCUR OR BE NECESSARY IN CONSTRUCTION.
MINOR DETAILS NOT SHOWN.

- ONE 120V 7-PLACE RECEPTACLE STRIP IN COMPARTMENT-LS1, EMS CABINET
- BATTERY CHARGER LOCATED IN PUMP PLUMBING AREA
- BATTERY CHARGER INDICATOR LOCATED ON DRIVER SIDE SEAT RISER
- L.E.D. LIGHT STRIPS WALKING SURFACE LIGHTING LOCATED IN THE CARGO AREA
- ONE FULL WIDTH/DEPTH ADJUSTABLE SHELF WITH SIDES IN COMPARTMENT-LS3, RS2, RS3; TWO IN RS1; THREE IN LS1
- ONE FLOOR MOUNTED SLIDE-OUT TRAY WITH SIDES IN COMPARTMENT-LS1, LS3, B1
- ONE SWING-OUT TOOLBOARD WITH PEGBOARD PATTERN IN COMPARTMENT-LS2
- MODEL 17 LITTLE GIANT LADDER LOCATED IN COMPARTMENT-RS3
- PEGBOARD WITH TRACKS ON REAR WALL IN COMPARTMENT-LS2, LS3
- TWO ADDITIONAL POLY TRAYS SHIPPED LOOSE
- ONE 120V RECEPTACLE STRIP LOCATED IN COMPARTMENT-LS1
- PULL STRAPS FOR DOORS IN COMPARTMENT-LS1, LS2, LS3, RS1, RS2, RS3
- ONE ADJUSTABLE SLIDE-OUT TRAY WITH SIDES IN COMPARTMENT-LS3, RS3, B1
- ONE ADJUSTABLE TILT/SLIDE-OUT TRAY IN COMPARTMENT-RS3
- ONE FULL WIDTH/DEPTH FLOOR MOUNTED SLIDE-OUT TRAY WITH SIDES IN COMPARTMENT-RS1
- PARTITION BETWEEN COMPARTMENTS LS1/B1 AND RS1/B1

REV	DATE	BY	CH	ENFORCER
1	12AUG19	BST	CSH	MAKE
2	09JUL19	BST	OTS	PIERCE
3	13JUN19	KLE	KWI	MODEL

		JOB NO.	33825
TITLE		SCALE	DATE
FOR		DRAWN BY	03MAY19
DWG NO.		CHECKED BY	06MAY19
33825AD		SHEET SIZE	SHEET NO.
		D	1 OF 1