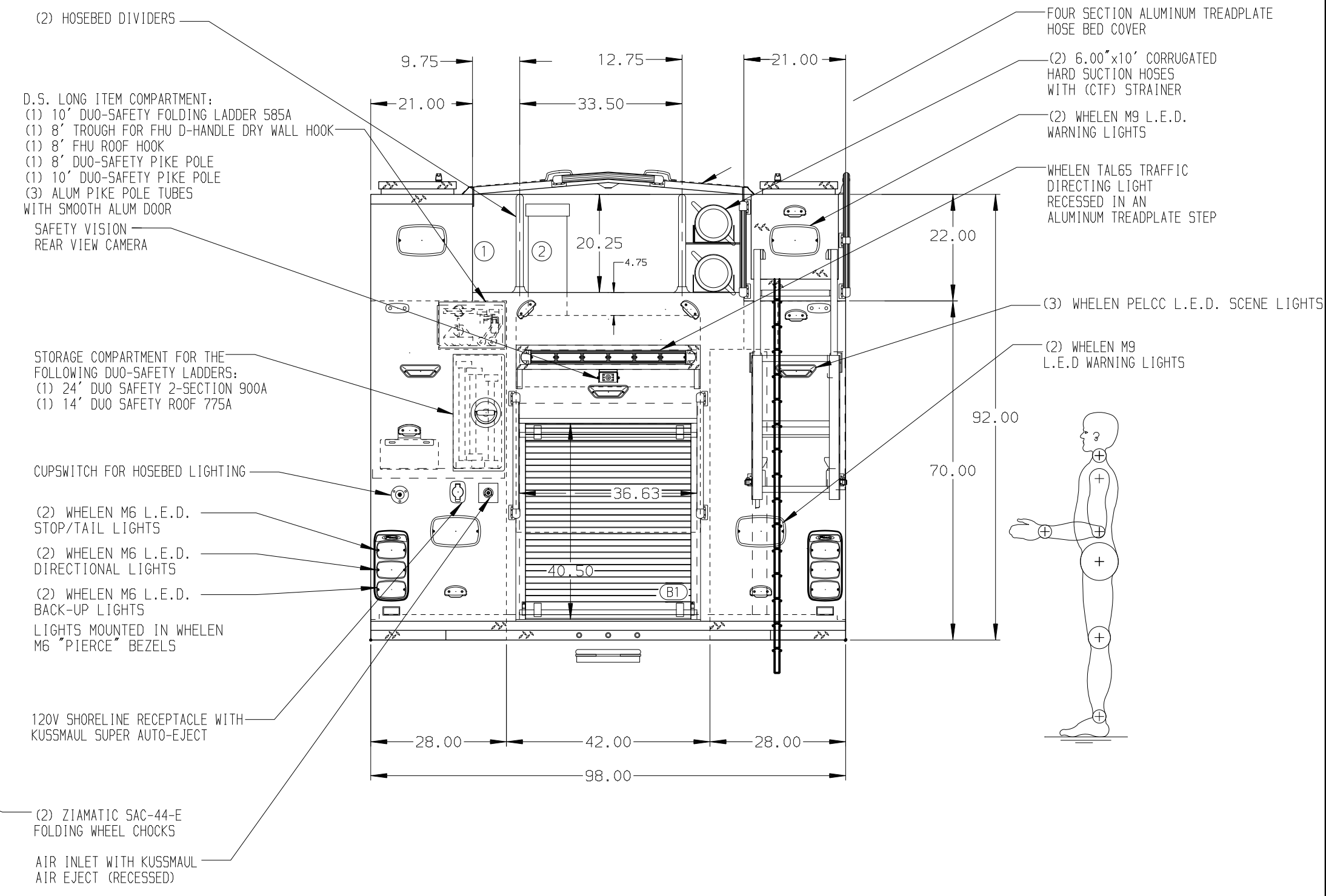
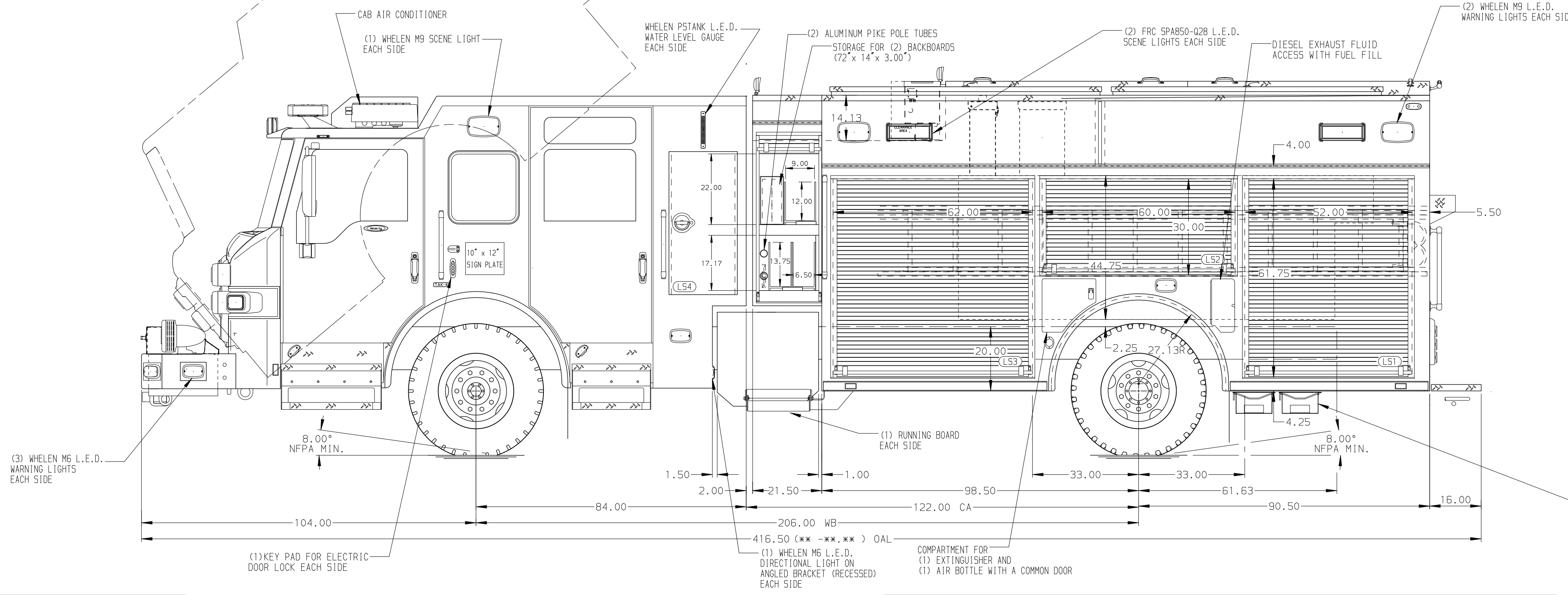


HOSEBED CAPACITIES

① 400' OF 2.50" D.J. POLY HOSE

② 1100' OF 5.00" D.J. POLY HOSE



ALUMINUM BODY

SIDE ROLL AND FRONTAL IMPACT PROTECTION

NOTE

DIMENSIONS SHOWN ARE APPROXIMATE AND ARE SUBJECT TO MINOR DEVIATIONS AS MAY OCCUR OR BE NECESSARY IN CONSTRUCTION. MINOR DETAILS NOT SHOWN.

- BATTERY CHARGER LOCATED IN L53
- BATTERY CHARGER INDICATOR LOCATED NEAR D.S. SEAT RISER WITH BRACKET
- SUB-FEED CIRCUIT BREAKER PANEL NEAR OTHER BREAKER BOX
- DUAL L.E.D. LIGHT STRIPS LOCATED IN HOSE BED
- TWO FULL WIDTH/DEPTH ADJUSTABLE SHELVES IN R53
- AIR OUTLET WITH SHUT OFF VALVE ON D.S. LOWER PUMP PANEL IN L53
- ONE ADJUSTABLE SLIDE-OUT TRAY IN B1
- ONE ADJUSTABLE TILT/SLIDE-OUT FULL WIDTH/DEPTH TRAY IN R52
- TWO SLIDE-OUT ALUMINUM TOOLBOARDS WITH PEGBOARD IN R53
- ONE 50LB FLOOR MOUNTED SLIDE-OUT TRAY IN B1, R53
- ONE SWING-OUT ALUMINUM TOOL BOARD IN L51 AND L52
- ONE CTECH DRAWER ASSEMBLY IN L53
- ALUMINUM PEGBOARD WITH TRACKS ON THE REAR WALL OF L52 AND R51
- PAC TRAC INSTALLED IN L53
- MOUNTING BRACKET FOR HYDRAULIC CUTTER TOOL IN CENTER TOOL TRAY
- AIR BAG RACK FOR 2 AIR BAGS IN R53
- ONE HORIZONTAL PARTITION IN L53
- ALUMINUM TOOLBOARD ADDED TO THE SLIDE OUT TRAY IN R51
- 120V DUPLEX RECEPTACLE ON THE REAR CENTER BACK WALL OF R54
- PARTITION BETWEEN COMPARTMENTS L51/B1 AND R51/B1

REV	DATE	BY	CH	VELOCITY
1	28AUG19	MWA	JJR	CHASSIS DATA
2	24JUL19	LST	JJR	MAKE
3	13JUN19	KLE	KWI	PIERCE
4	24APR19	LST	SMA	MODEL

		JOB NO.	33838
		SCALE	1:24
MANUFACTURING INC.		TITLE	1500-D-775P 750 GAL OF WATER W/ 25 GAL FOAM CELL 189" PUC RESCUE, (3) X-LAYS, LADDERS THRU BODY
		FOR	BROWARD COUNTY SHERIFF'S OFFICE FORT LAUDERDALE, FLORIDA
		DWG NO.	33838AD
		SHEET NO.	D
<p>DATE</p>		CHECKED BY	SMA
<p>DATE</p>		DRAWN BY	LST
<p>DATE</p>		SHEET SIZE	17APR19
<p>DATE</p>		DATE	18APR19
<p>DATE</p>		DATE	17APR19
<p>DATE</p>		DATE	18APR19
<p>DATE</p>		DATE	17APR19
<p>DATE</p>		DATE	18APR19